

# MOLDVILLE.com

*Experience the souvenir fun of the 60s & 70s again, for the first time...*

(MOLDVILLE is not affiliated with **Mold-A-Rama, Inc.** of Chicago, IL nor with the 1960s company **Mold-A-Rama, Inc.** of Los Angeles, original operator of the "Disneyland Toy Factory.")

Website last updated: 04-18-2016



Club-A-Rama Week 18:

## FLYING REINDEER

1962



The flying REINDEER makes a perfect Christmas tree ornament! It is one of a handful of earliest mold designs introduced by Mold-A-Rama in the early days of 1962.



The flying REINDEER was vended at **THE CHILDREN'S WONDERLAND** from the early 1960s through the 1970s. Also, it was run in the 1990s at the **LOWRY PARK ZOO**.

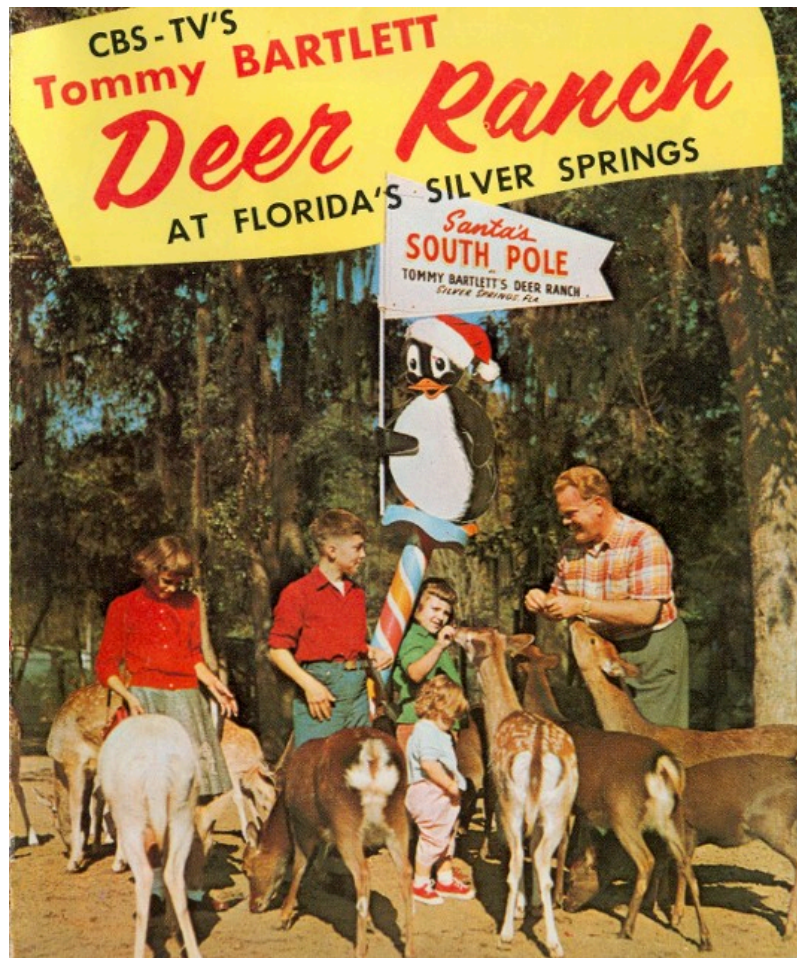


But one of the VERY first locations where the flying REINDEER was run, if not THE first location where it was run, was at the **TOMMY BARTLETT INTERNATIONAL DEER RANCH** at Silver Springs, Florida. Original figures from that location were inscribed, simply, "DEER RANCH".





"Santa's South Pole" at TOMMY BARTLETT's DEER RANCH



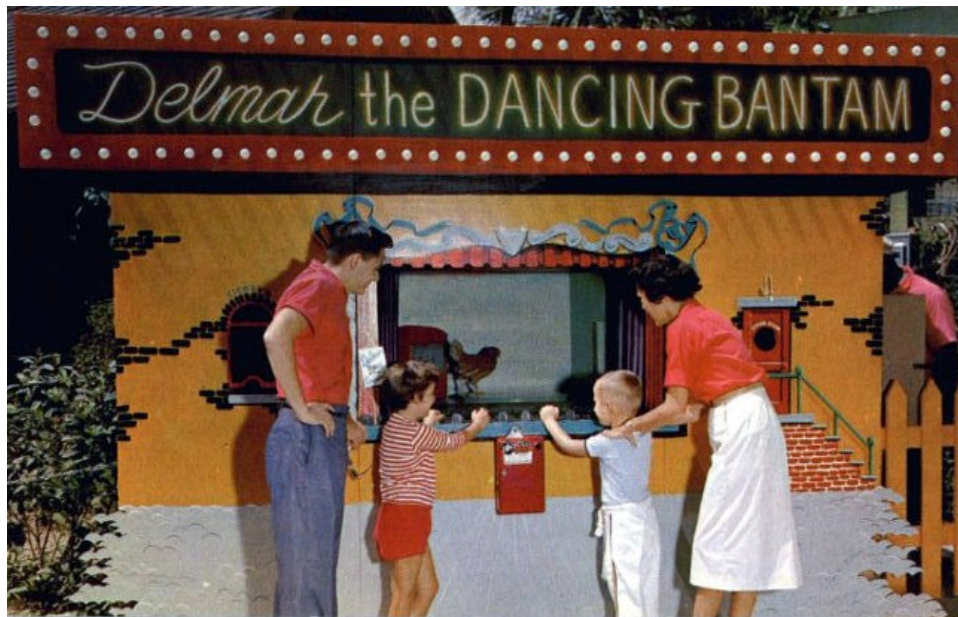
That's Tommy Bartlett himself, a former Hollywood broadcaster-turned-deer-ranch-owner (then also of Wisconsin Dells thrill show and Robot World fame), feeding his deer in 1958. The Deer Ranch shared a parking lot with Silver Springs in Florida. Guests could ride the "sleigh" (shown third photo above) from one entrance to the other. The land for the Deer Ranch was rented from Silver Springs - in later years there was a lawsuit between Bartlett and Silver Springs over his lease. Eventually the Deer Ranch would close, the land would be absorbed into the Silver Springs attraction, and Bartlett left to concentrate on his Wisconsin Dells business. Today all that remains of the Tommy Bartlett International Deer Ranch is the entrance building, which is now the gift shop and entrance to Silver Springs' World of Bears and Jeep Safari.



Desmond, a graduate of Animal Behavior, is the world's only duck which plays the bass drum. His antics amuse visitors, young and old alike, at Tommy Bartlett's Deer Ranch located at Florida's Famed Silver Springs.



Ouija gives the answers as to what the future holds for the visitors to Tommy Bartlett's Deer Ranch at Florida's Famed Silver Springs.



Delmar, trained by Keller Breland, walks onto the stage, turns on the juke box and tap dances for the pleasure of visitors to Tommy Bartlett's Deer Ranch, located at Florida's famed Silver Springs.



Tommy Bartlett's Deer Ranch Bottle Feeding Babies Scene Nursery Picture, FL



Note the "Bambi Buffet" Deer Feed vending machine in the background for 5c. (This photo from 1971)



Not related to the flying REINDEER, but timely for the season - these are original J.H. Miller nativity animals made around 1957 on J.H. Miller's own prototype of the Mold-A-Rama machine (J.H. Miller was the inventor of the Mold-A-Rama machine.) These demonstrate how fantastic the MOLD figures from these machines can look when they are painted - even when painted in bulk on a manufacturing line. It also shows why Mold-A-Rama also sold paint kits, and encouraged people to paint the figures with "YOU CAN COLOR THEM TOO." Below is an example of a painted MOLD from a Mold-A-Rama, Inc. machine.



The flying REINDEER moldset is among the very earliest that Mold-A-Rama made - so early that it PRE-dates the numbering system. The flying REINDEER, along with the flying ANGEL (which also pre-dates the numbering system), were both made by Mold-A-Rama, Inc. for its very first Christmas season in 1962.

Disclaimers: The color and/or exact condition of the MOLD you get in the CLUB-A-RAMA may or may not be as shown. Not for children under 3.

Please visit the facebook page called 'Moldville', and 'LIKE' it, to keep up to date:  
<http://www.facebook.com/pages/MOLDVILLE/156515454416041?success=1>

**If YOU would like to own this very moldset** (and perhaps even include a fully operating MOLDVILLE machine to go with it) so you can reissue your own souvenirs from 50 years ago, please email [MoldvilleMachine@gmail.com](mailto:MoldvilleMachine@gmail.com) TODAY - before someone else beats you to it!

[Home](#) | [Disneyland TOY FACTORY](#) | [VOICE-O-GRAPH Record Booth](#) | [That 1960's SMELL!](#) | [CLUB-A-RAMA v1.0](#) | [01: Flying Saucer boat](#) | [02: Empire State Building](#) | [03: HOTEL](#) | [04: Beach Girl](#) | [05: Space Needle](#) | [06: Lion](#) | [07: Clock of Nations](#) | [08: Frankenstein Bank](#) | [09: snowman](#) | [10: Gateway Arch](#) | [11: Canadian maple leaf EXPO '67 centennial](#) | [12: Grizzly Bear](#) | [13: MGM Flipper](#) | [14: Diving Horse](#) | [15: Kewpie Doll](#) | [16: capt. starn's sailboat](#) | [17: glowing angel](#) | [18: flying reindeer](#) | [19: alweg monorail](#) | [20: Carolina Snowball](#) | [21: tour eiffel](#) | [22: small gorilla](#) | [23: ENCO watchdog](#) | [24: Lincoln bust](#) | [25: mercury space capsule](#) | [26: friendship airport](#) | [27: Hollywood Bowl](#) | [28: bowling pin & card](#) | [29: unisphere](#) | [30: small elephant](#) | [31: grauman's chinese theatre](#) | [32: troll bank](#) | [33: century 21 exposition](#) | [34: glow sailfish](#) | [35: buddha Hollywood](#) | [36: golden gate bridge](#) | [37: Playland's Fun-Tier Town](#) | [38: Pleasure Island Moby Dick Hunt](#) | [39: Donkey](#) | [40: Marineland Skytower](#) | [41: RCMP](#) | [42: trolley car](#) | [43: pumpkin](#) | [44: liberty bell](#) | [45: kennedy bust](#) | [46: hms bounty](#) | [47: ankylosaurus](#) | [48: bowling pin](#) | [49: octopus](#) | [50: ben franklin](#) | [51: skull](#) | [52: lawrence welk](#) | [53: 3monkees \(no base\)](#) | [CLUB-A-RAMA v2.0](#) | [MILLER ALIEN Purple People Eater](#) | [The MOLD-A-RAMA Machine](#) | [History](#) | [1964 NY WORLDS FAIR questions answered!](#) | [Moldville RetroWax \(TM\)](#) | [Moldville MillerWax \(TM\)](#) | [FOR SALE: Vintage MOLD machine](#) | [Contact Us](#)