

MOLDVILLE.com

Experience the souvenir fun of the 60s & 70s again, for the first time...

(MOLDVILLE is not affiliated with **Mold-A-Rama, Inc.** of Chicago, IL nor with the 1960s company **Mold-A-Rama, Inc.** of Los Angeles, original operator of the "Disneyland Toy Factory.")

Website last updated: 04-18-2016



Club-A-Rama Week 36:

GOLDEN GATE BRIDGE

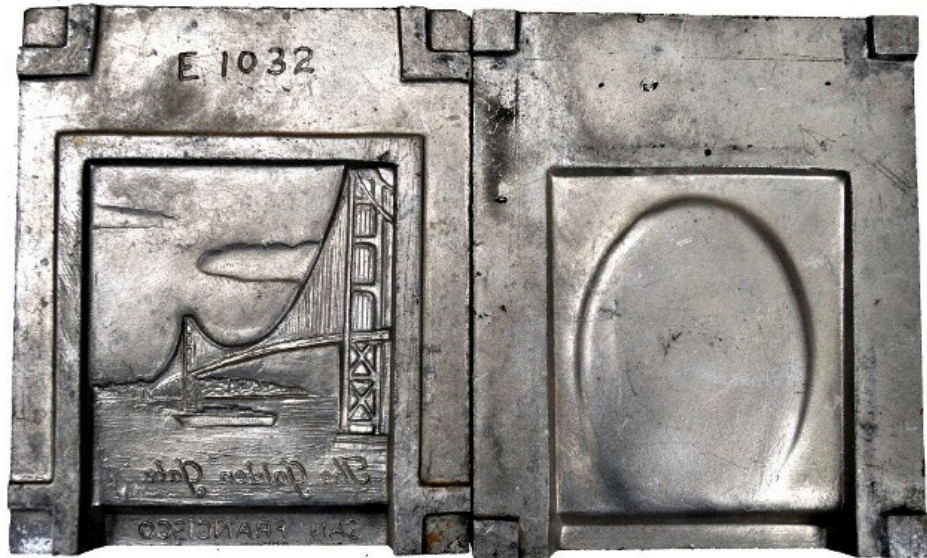
1962 San Francisco, CA



Opened in 1937, the 1.7 mile long GOLDEN GATE BRIDGE is one of the most internationally recognized symbols of San Francisco, California, and as such has been declared one of the modern Wonders of the World. The Frommers travel guide calls it "possibly the most beautiful" bridge in the world.



This is the infamous, gritty Academy Award-winning car chase scene around the streets of San Francisco for the 1968 movie "BULLITT" starring Steve McQueen. It was made a few years after the GOLDEN GATE BRIDGE moldset, but is SUCH a classic from 1960s San Francisco that I couldn't resist. Indeed, the 11 minute muscle-car chase scene between a Ford Mustang GT and a Dodge Charger R/T has been called "one of the screen's all-time best." It begins in the Fisherman's Wharf area of San Francisco, and runs through many, many streets of San Francisco (which is why I included it with this week's writeup.) (Note that due to editing the cars pass the same green VW beetle 4 times!) Unfortunately for the purposes of this week's 50 year old reissued souvenir of the **GOLDEN GATE BRIDGE** - though the car chase gives a great feel for the look of San Francisco in the 1960s, authorities at the time did not let the filmmakers film the car chase on the Golden Gate Bridge :(



MOLDVILLE.com's collection of original moldsets (currently numbering over 84 different moldsets!) focuses on the earliest and best of the Mold-A-Rama era, and this week is no exception. The **GOLDEN GATE BRIDGE** moldset is dated to the very first year of operation by Mold-A-Rama: 1962.



Sometime in the 1970s (or perhaps into the 1980s) one **GOLDEN GATE BRIDGE** moldset was modified to instead carry the engraving "GOLDEN GATE LANES, EL CERRITO".

GOLDEN GATE LANES, EL CERRITO was a bowling alley in El Cerrito, California, that opened in 1962. It had a popular run before it was torn down and replaced with a Target store in 1991, which in turn was replaced a couple years ago with a Safeway grocery store.

Disclaimers: The color and/or exact condition of the MOLD you get in the CLUB-A-RAMA may or may not be as shown. Not for children under 3.

Please visit the facebook page called 'Moldville', and 'LIKE' it, to keep up to date:
<http://www.facebook.com/pages/MOLDVILLE/156515454416041?success=1>

If YOU would like to own this very moldset (and perhaps even include a fully operating MOLDVILLE machine to go with it) so you can reissue your own souvenirs from 50 years ago, please email MoldvilleMachine@gmail.com TODAY - before someone else beats you to it!

[Home](#) | [Disneyland TOY FACTORY](#) | [VOICE-O-GRAPH Record Booth](#) | [That 1960's SMELL!](#) | [CLUB-A-RAMA v1.0](#) | [01: Flying Saucer boat](#) | [02: Empire State Building](#) | [03: HOTEL](#) | [04: Beach Girl](#) | [05: Space Needle](#) | [06: Lion](#) | [07: Clock of Nations](#) | [08: Frankenstein Bank](#) | [09: snowman](#) | [10: Gateway Arch](#) | [11: Canadian maple leaf EXPO '67 centennial](#) | [12: Grizzly Bear](#) | [13: MGM Flipper](#) | [14: Diving Horse](#) | [15: Kewpie Doll](#) | [16: capt. starn's sailboat](#) | [17: glowing angel](#) | [18: flying reindeer](#) | [19: alweg monorail](#) | [20: Carolina Snowball](#) | [21: tour eiffel](#) | [22: small gorilla](#) | [23: ENCO watchdog](#) | [24: Lincoln bust](#) | [25: mercury space capsule](#) | [26: friendship airport](#) | [27: Hollywood Bowl](#) | [28: bowling pin & card](#) | [29: unisphere](#) | [30: small elephant](#) | [31: grauman's chinese theatre](#) | [32: troll bank](#) | [33: century 21 exposition](#) | [34: glow sailfish](#) | [35: buddha Hollywood](#) | [36: golden gate bridge](#) | [37: Playland's Fun-Tier Town](#) | [38: Pleasure Island Moby Dick Hunt](#) | [39: Donkey](#) | [40: Marineland Skytower](#) | [41: RCMP](#) | [42: trolley car](#) | [43: pumpkin](#) | [44: liberty bell](#) | [45: kennedy bust](#) | [46: hms bounty](#) | [47: ankylosaurus](#) | [48: bowling pin](#) | [49: octopus](#) | [50: ben franklin](#) | [51: skull](#) | [52: lawrence welk](#) | [53: 3monkees \(no base\)](#) | [CLUB-A-RAMA v2.0](#) | [MILLER ALIEN Purple People Eater](#) | [The MOLD-A-RAMA Machine](#) | [History](#) | [1964 NY WORLDS FAIR questions answered!](#) | [Moldville RetroWax \(TM\)](#) | [Moldville MillerWax \(TM\)](#) | [FOR SALE: Vintage MOLD machine](#) | [Contact Us](#)