

MOLDVILLE.com

Experience the souvenir fun of the 60s & 70s again, for the first time...

(MOLDVILLE is not affiliated with **Mold-A-Rama, Inc.** of Chicago, IL nor with the 1960s company **Mold-A-Rama, Inc.** of Los Angeles, original operator of the "Disneyland Toy Factory.")

Website last updated: 04-18-2016



Club-A-Rama Week 38: Pleasure Island MOBY DICK HUNT

1963 Wakefield, MA



This week is a reissued figurine from 49 years ago (1963) that as a figure is more commonly seen - but not from its original venue! MOLDVILLE's Pilot Whale moldset is engraved "PLEASURE ISLAND". With that as our only hint to start our research, we found ourselves sorting through a ton of surly websites . . . :) But then, alas, we not only hit on THE Pleasure Island that we were looking for, we had positive confirmation with the image of a vintage plastic Pilot Whale souvenir figure.

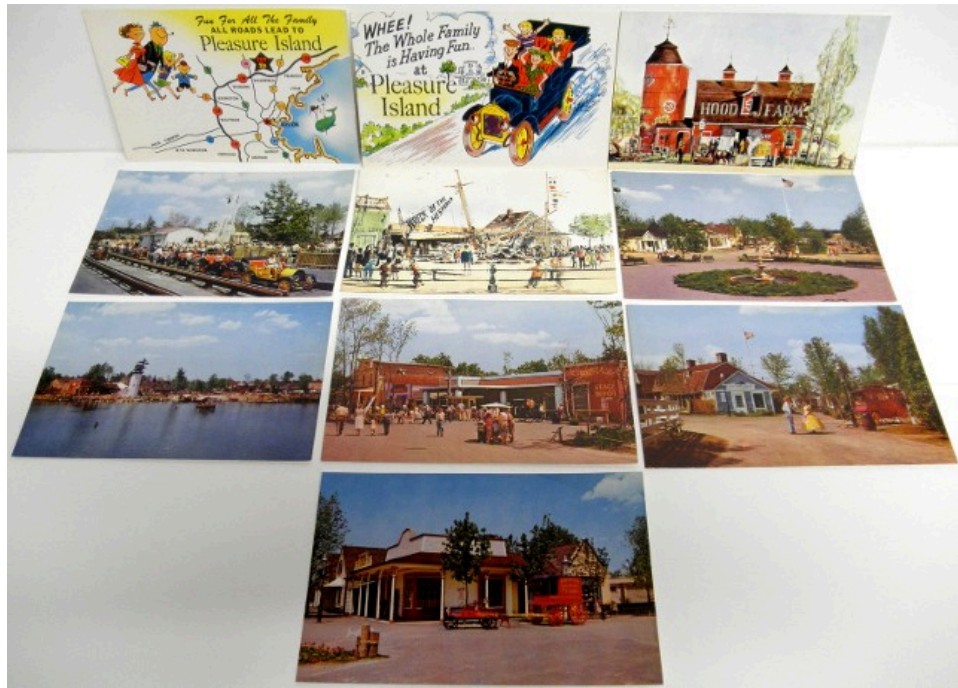
Posted on a website dedicated to yet another long-gone amusement park (<http://friendsofpleasureisland.org>), is this image, along with a note by the proud owner:

"Plastic whale extruded from Pleasure Island machine . . ."

And whalla! Yet another Mold-A-Rama history mystery solved by MOLDVILLE!



Pleasure Island in Wakefield, Massachusetts was a short lived (1959-1969) but much loved amusement park. It was Boston's answer to Disneyland, and was marketed as "Disneyland of the East." It seems though that New England's relatively short summers hampered profits of an outdoor amusement park. Go figure!



Pleasure Island covered 80 acres, featuring lots of rides, including the Pirate Ride, the Space Rocket, but the main attraction was the MOBY DICK RIDE that centered upon the search for the great white whale. As riders in boats floated along a lazy waterway a spouting mechanical whale surprised the riders and rose from the depths.



EXTRA

10 A. M.

**GREAT WHALE
SIGHTED AGAIN**

CHASE 70-FOOT SPOUTER

SHIPS IN PERIL

**HARPOONERS TELL
HAIRY TALES!**

The story of whaling has been told in print by Herman Melville and it is from the immortal pages of "Moby Dick" that Clipper Cove has taken its cue in restoring a whaling port and a ride in whale boats which provides the atmosphere of a real chase of a white monster of the deep.

The excitement begins the moment the whale boat, with a harpooner in the bow, leaves the Clipper Cove wharf. The narrator on each boat begins his explanation of the hunt, of the huge white whale which is enough to strike terror into the heart of all who behold it.

The quarry is the white whale, and the narrator explains, the great beast is likely to be sighted soon.

Then comes the magic cry from the boatswain, "Har she blows." The white whale has been sighted in a cove by a lonely island.

He blows, spurring a stream of spray into the air as he frolics and rolls beneath the water.

The boatswain changes course and heads into the cove straight for the great beast.

Closer the boat comes, and the harpooner is ready. Moby Dick will surface any time now. Then will be the time to hurl the harpoon.



The location is now ...

go ahead and guess ...

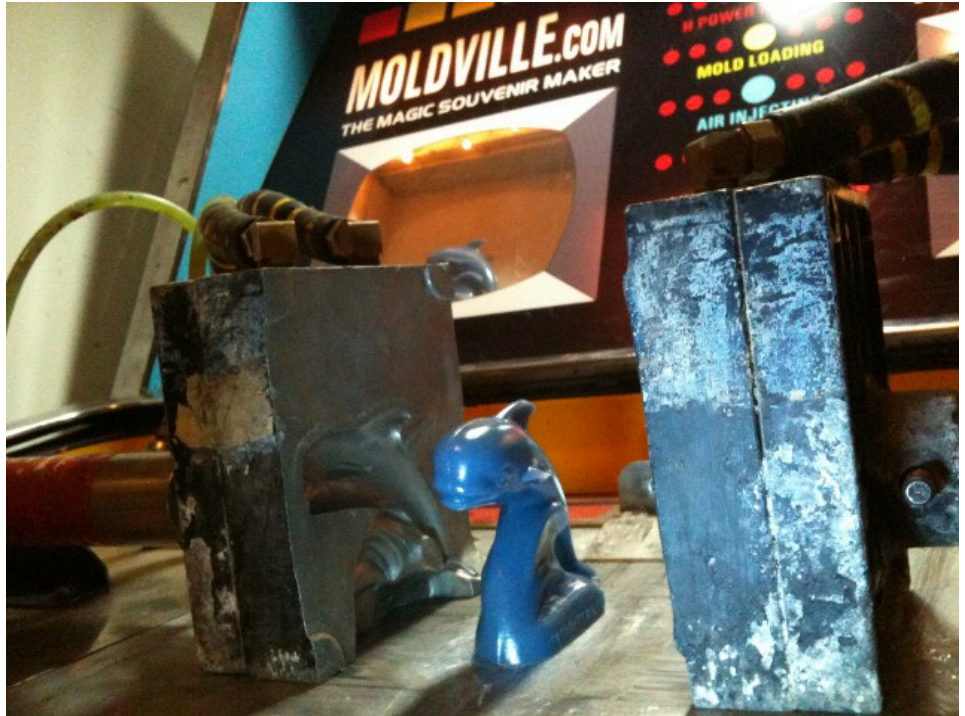
no it's NOT condominiums -

it's an Office Park!





I played with the MOBY DICK HUNT Pilot Whale in Glow-In-The-Dark wax. Pretty cool!





The **MOBY DICK HUNT** Pilot Whale, engraved "PLEASURE ISLAND" dates to 1963.

Adding to the evidence that the Pilot Whale moldset was first used at Pleasure Island in Wakefield, Massachusetts is the fact that we found a **SECOND** original Pilot Whale moldset with the same engraving to "PLEASURE ISLAND".



Disclaimers: The color and/or exact condition of the MOLD you get in the CLUB-A-RAMA may or may not be as shown. Not for children under 3.

Please visit the facebook page called 'Moldville', and 'LIKE' it, to keep up to date:
<http://www.facebook.com/pages/MOLDVILLE/156515454416041?success=1>

If YOU would like to own this very moldset (and perhaps even include a fully operating MOLDVILLE machine to go with it) so you can reissue your own souvenirs from 50 years ago, please email MoldvilleMachine@gmail.com TODAY - before someone else beats you to it!

[Home](#) | [Disneyland TOY FACTORY](#) | [VOICE-O-GRAPH Record Booth](#) | [That 1960's SMELL!](#) | [CLUB-A-RAMA v1.0](#) | [01: Flying Saucer boat](#) | [02: Empire State Building](#) | [03: HOTEL](#) | [04: Beach Girl](#) | [05: Space Needle](#) | [06: Lion](#) | [07: Clock of Nations](#) | [08: Frankenstein Bank](#) | [09: snowman](#) | [10: Gateway Arch](#) | [11: Canadian maple leaf EXPO '67 centennial](#) | [12: Grizzly Bear](#) | [13: MGM Flipper](#) | [14: Diving Horse](#) | [15: Kewpie Doll](#) | [16: capt. starn's sailboat](#) | [17: glowing angel](#) | [18: flying reindeer](#) | [19: alweg monorail](#) | [20: Carolina Snowball](#) | [21: tour eiffel](#) | [22: small gorilla](#) | [23: ENCO watchdog](#) | [24: Lincoln bust](#) | [25: mercury space capsule](#) | [26: friendship airport](#) | [27: Hollywood Bowl](#) | [28: bowling pin & card](#) | [29: unisphere](#) | [30: small elephant](#) | [31: grauman's chinese theatre](#) | [32: troll bank](#) | [33: century 21 exposition](#) | [34: glow sailfish](#) | [35: buddha Hollywood](#) | [36: golden gate bridge](#) | [37: Playland's Fun-Tier Town](#) | [38: Pleasure Island Moby Dick Hunt](#) | [39: Donkey](#) | [40: Marineland Skytower](#) | [41: RCMP](#) | [42: trolley car](#) | [43: pumpkin](#) | [44: liberty bell](#) | [45: kennedy bust](#) | [46: hms bounty](#) | [47: ankylosaurus](#) | [48: bowling pin](#) | [49: octopus](#) | [50: ben franklin](#) | [51: skull](#) | [52: lawrence welk](#) | [53: 3monkees \(no base\)](#) | [CLUB-A-RAMA v2.0](#) | [MILLER ALIEN Purple People Eater](#) | [The MOLD-A-RAMA Machine](#) | [History](#) | [1964 NY WORLDS FAIR questions answered!](#) | [Moldville RetroWax\(TM\)](#) | [Moldville MillerWax\(TM\)](#) | [FOR SALE: Vintage MOLD machine](#) | [Contact Us](#)