

MOLDVILLE.com

Experience the souvenir fun of the 60s & 70s again, for the first time...

(MOLDVILLE is not affiliated with **Mold-A-Rama, Inc.** of Chicago, IL nor with the 1960s company **Mold-A-Rama, Inc.** of Los Angeles, original operator of the "Disneyland Toy Factory.")

Website last updated: 04-18-2016



Club-A-Rama v2.0

WEEK 1

SPACE LAB

1964-65 New York World's Fair, Hall of Science

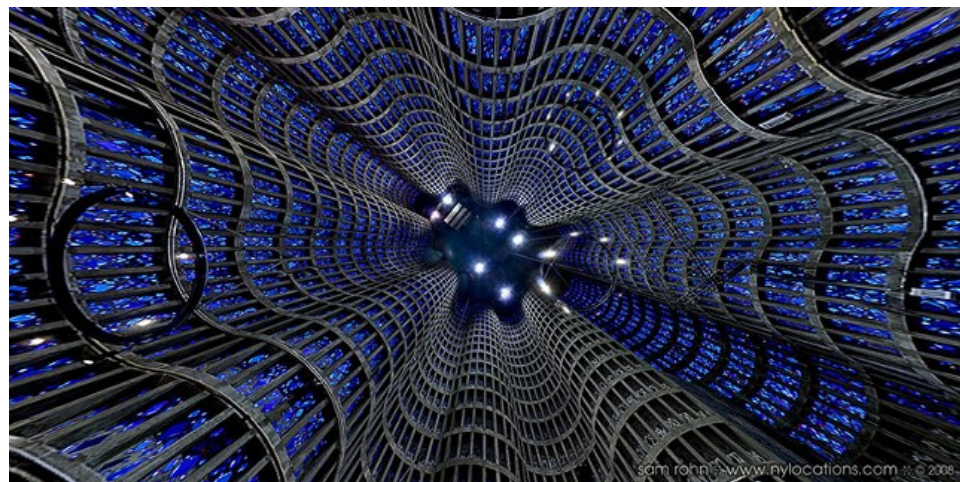


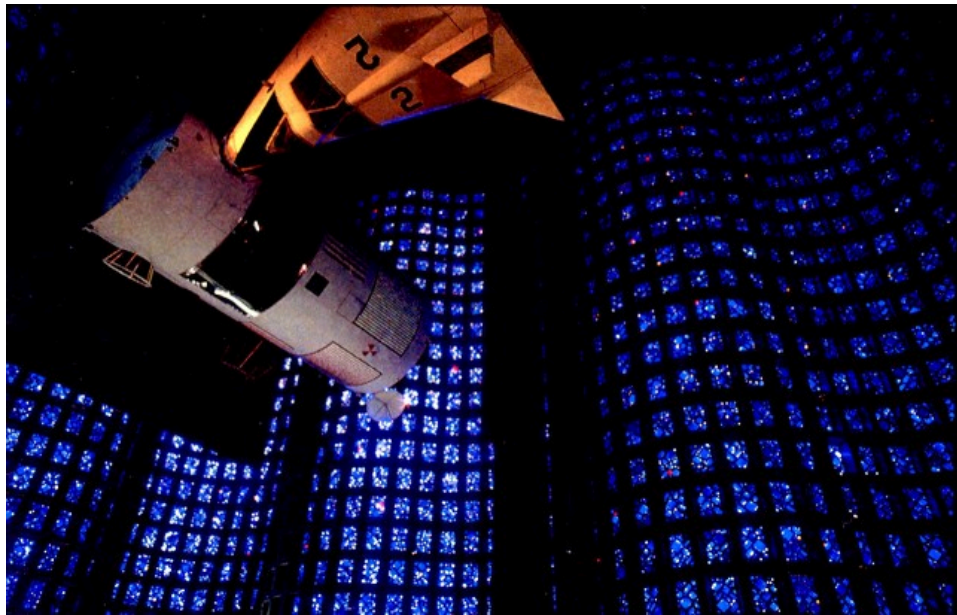
Of all the many original moldsets from Mold-A-Rama that I really WISH I had a vintage photo of the machine vending it - the **SPACE LAB** is one at the top of my list! In my research into the history of the **SPACE LAB** moldset, I had my suspicions that it might have been first vended at the 1964-65 New York World's Fair. After consultation with a long-time operator, and with one of our most experienced collector-members, we have all come to that very conclusion.

This was the Hall of Science in Flushing Meadow Park at the 1964-65 New York World's Fair. It was in the Great Hall where "A SPACE TRIP" was exhibited. A rendezvous in space was realistically simulated with special effects. At the climax, two full-scale spaceship models (the SPACE LAB and Martin SPACE TAXI) hovered 50 feet in the air to exchange crews and supplies.



At the HALL OF SCIENCE at the 1964-65 New York World's Fair, an animated Martin SPACE TAXI dubbed "Yellowbird" was depicted as docking with the "SPACE LAB."





The Hall of Science was designed by Wallace K. Harrison includes a science pavilion in its Great Hall formed as a soaring, 80-foot-high room, bathed in light filtered through panels of cobalt blue glass. Curvy and cornerless, it seems to have no fixed dimensions. Harrison wanted to express the limitless quality of space. (Harrison also designed the UN Headquarters and the Metropolitan Opera House at Lincoln Center.)



Several vintage Mold-A-Rama versions of the Martin SPACE TAXI have turned up over the years (they are all yellow). It's inscription "SPACE TAXI US" has an unusually smaller font - similar to that on the SPACE LAB, leading credence to the thought that these two souvenirs were vended at the same venue.



Below is a film shown at the Hall of Science called "RENDEZVOUS IN SPACE" (split into two parts). In the video there is a segment in which there is sound but no picture - this is not a mistake. During this period when no image was projected onto the movie screen, a mock-up of the Martin SPACE TAXI docked with the SPACE LAB high overhead in the movie theater.

[Rendezvous in Space - Part A](#)

[Rendezvous In Space - Part B](#)



The SPACE LAB moldset is numbered 1156. From a technical design perspective, the SPACE LAB moldset is on the hairy fringe of the MAXIMUM VOLUME that a molded figure may encompass. That's because the mold machine first injects an amount of wax plastic with a piston, then blows air through the figure to evacuate the center (aka blow molding). The wax plastic must, however, completely fill the void before the air shot occurs (keeping in mind that some amount of the injected plastic will constantly drip back out through the evacuation hole.) Anyway, the injected wax plastic just BARELY fills the void in this moldset before it is evacuated back out.

According to Bill Cotter's fantastic website about the NYWF "<http://nywf64.com>", eleven exhibitors displayed scientific advances at the Hall of Science, ranging from disease control to travel in space. After the 1964-65 New York World's Fair closed, the Hall of Science building (a permanent structure) became the New York Museum of Science and Technology, which continues to thrive today, having just completed a major expansion.



Disclaimers: The color and/or exact condition of the MOLD you get in the CLUB-A-RAMA may or may not be as shown. Not for children under 3.

Please visit the facebook page called 'Moldville', and 'LIKE' it, to keep up to date: <http://www.facebook.com/pages/MOLDVILLE/156515454416041?success=1>

If YOU would like to own this very moldset (and perhaps even include a fully operating MOLDVILLE machine to go with it) so you can reissue your own souvenirs from 50 years ago, please email TODAY - before someone else beats you to it!

MoldvilleMachine@gmail.com

[Home](#) | [Disneyland TOY FACTORY](#) | [VOICE-O-GRAPH Record Booth](#) | [That 1960's SMELL!](#) | [CLUB-A-RAMA v1.0](#) | [CLUB-A-RAMA v2.0](#) | [01: space lab](#) | [02: cardinal](#) | [03: panda](#) | [04: chimpanzee](#) | [05: the general sherman](#) | [06: george washington](#) | [07: pavilion of electric power](#) | [08: przewalski's horse](#) | [09: jai-alai](#) | [10: macaw](#) | [11: riverboat](#) | [12: gemini space capsule](#) | [13: rattlesnake](#) | [14: lunar module](#) | [15: water ski girl](#) | [16: singing angel](#) | [17: southern belle](#) | [18: president johnson](#) | [19: pelican](#) | [20: king cobra](#) | [21: bull](#) | [22: Hackney's lobster](#) | [23: cockatoo](#) | [24: cowboy w/ bag](#) | [25: valley forge](#) | [26: miami airport](#) | [27: muddy mud hen](#) | [28: truman bust](#) | [29: large dolphin](#) | [30: space rail](#) | [31: standing lincoln](#) | [32: glass bottom boat](#) | [33: kitty bank](#) | [34: aardvark](#) | [35: chimp & baby](#) | [36: large JFK](#) | [37: stone mountain](#) | [38: bowling pin plaque](#) | [39: corky the clown](#) | [40: new york skyline](#) | [41: titan IIIc missile](#) | [42: walking bear](#) | [43: cow](#) | [44: clown](#) | [45: humble oil building](#) | [46: brontosaurus \(looking back\)](#) | [47: Roosevelt bust](#) | [48: coal car train](#) | [49: piggy bank](#) | [50: pirate](#) | [51: sea turtle](#) | [52: space shuttle in orbit](#) | [53: georgia state capitol](#) | [54: eisenhower bust](#) | [MILLER ALIEN Purple People Eater](#) | [The MOLD-A-RAMA Machine](#) | [History](#) | [1964 NY WORLDS FAIR questions answered!](#) | [Moldville RetroWax \(TM\)](#) | [Moldville MillerWax \(TM\)](#) | [FOR SALE: Vintage MOLD machine](#) | [Contact Us](#)