

MOLDVILLE.com

Experience the souvenir fun of the 60s & 70s again, for the first time...

(MOLDVILLE is not affiliated with **Mold-A-Rama, Inc.** of Chicago, IL nor with the 1960s company **Mold-A-Rama, Inc.** of Los Angeles, original operator of the "Disneyland Toy Factory.")

Website last updated: 04-18-2016



Club-A-Rama v2.0

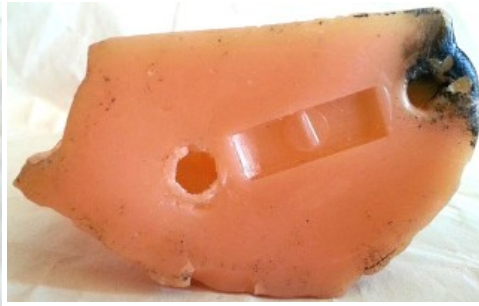
WEEK 10

MACAW

early 1970s Florida



The **MACAW!** Technically, this is known as the 'small' **MACAW** as there is a slightly larger moldset in existence as well. The **MACAW** has been in use at BUSCH GARDENS, at the PARROT JUNGLE, and at WEEKI WACHEE.



This is an original, vintage **MACAW** in vintage wax. Note the use of a hold-down block on the vat cover just like the one recently obtained by **MOLDVILLE** (shown in place below.) The hold-down helps to keep the newly formed figure in place as the moldset separates at the end of the cycle. Note that it requires modification of the delivery shovel to include a slot cut into it so that it passes over the hold-down.

Here's an even cooler (and older) original, vintage **MACAW!**





The **LARGE MACAW** at the Sunken Gardens, Florida, in the mid-1980s.



The **MACAW** moldset is post-ARA (1970s).



To get a sense of the very slight difference between the small **MACAW** (right) and the large **MACAW** (left), note the different pose of the large **MACAW** as compared to the small **MACAW**.

Disclaimers: The color and/or exact condition of the MOLD you get in the CLUB-A-RAMA may or may not be as shown. Not for children under 3.

Please visit the facebook page called 'Moldville', and 'LIKE' it, to keep up to date:
<http://www.facebook.com/pages/MOLDVILLE/156515454416041?success=1>

[Home](#) | [Disneyland TOY FACTORY](#) | [VOICE-O-GRAPH Record Booth](#) | [That 1960's SMELL!](#) | [CLUB-A-RAMA v1.0](#) | [CLUB-A-RAMA v2.0](#) | [01: space lab](#) | [02: cardinal](#) | [03: panda](#) | [04: chimpanzee](#) | [05: the general sherman](#) | [06: george washington](#) | [07: pavilion of electric power](#) | [08: przewalski's horse](#) | [09: jai-alai](#) | [10: macaw](#) | [11: riverboat](#) | [12: gemini space capsule](#) | [13: rattlesnake](#) | [14: lunar module](#) | [15: water ski girl](#) | [16: singing angel](#) | [17: southern belle](#) | [18: president johnson](#) | [19: pelican](#) | [20: king cobra](#) | [21: bull](#) | [22: Hackney's lobster](#) | [23: cockatoo](#) | [24: cowboy w/ bag](#) | [25: valley forge](#) | [26: miami airport](#) | [27: muddy mud hen](#) | [28: truman bust](#) | [29: large dolphin](#) | [30: space rail](#) | [31: standing lincoln](#) | [32: glass bottom boat](#) | [33: kitty bank](#) | [34: aardvark](#) | [35: chimp & baby](#) | [36: large JFK](#) | [37: stone mountain](#) | [38: bowling pin plaque](#) | [39: corky the clown](#) | [40: new york skyline](#) | [41: titan IIIc missile](#) | [42: walking bear](#) | [43: cow](#) | [44: clown](#) | [45: humble oil building](#) | [46: brontosaurus \(looking back\)](#) | [47: Roosevelt bust](#) | [48: coal car train](#) | [49: piggy bank](#) | [50: pirate](#) | [51: sea turtle](#) | [52: space shuttle in orbit](#) | [53: georgia state capitol](#) | [54: eisenhower bust](#) | [MILLER ALIEN Purple People Eater](#) | [The MOLD-A-RAMA Machine](#) | [History](#) | [1964 NY WORLDS FAIR questions answered!](#) | [Moldville RetroWax \(TM\)](#) | [Moldville MillerWax \(TM\)](#) | [FOR SALE: Vintage MOLD machine](#) | [Contact Us](#)