

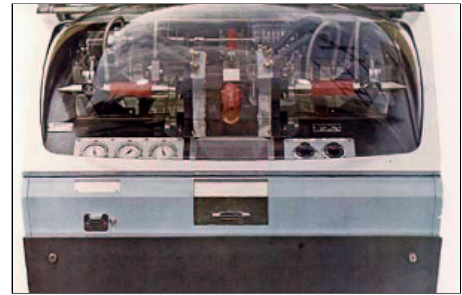
MOLD-A-RAMA (moldarama) machine made in 1964 by Mold-A-Rama, Inc. for New York World's Fair, and Seattle World's Fair in 1962, is restored to its original glory to reissue souvenirs last seen half a century ago. MOLD-A-RAMA machine made in 1964 by Mold-A-Rama, Inc. for New York World's Fair, and Seattle World's Fair in 1962, is restored to its original glory to reissue souvenirs last seen half a century ago.

MOLDVILLE.com

Experience the souvenir fun of the 60s & 70s again, for the first time...

(MOLDVILLE is not affiliated with **Mold-A-Rama, Inc.** of Chicago, IL nor with the 1960s company **Mold-A-Rama, Inc.** of Los Angeles, original operator of the "Disneyland Toy Factory.")

Website last updated: 04-18-2016



Club-A-Rama v2.0

WEEK 25

VALLEY FORGE

1963



The origins of the VALLEY FORGE moldset is a stumper. I've inquired of all my usual experts, as well as our former Mold-A-Rama employee from the 1964-65 new York World's Fair, and came up empty as to where the VALLEY FORGE moldset may have first been run.



A war breaks out every day at the Fair . . . and you can join right in. It's the American Revolution at the Continental Insurance Pavilion.

Push a button and watch the sea battle between Captain John Paul Jones' Bonhomme Richard and the Serapis . . . or share the bitter winter encampment at Valley Forge with Washington's troops.

Study a fascinating display of guns and military gear actually used in the Revolution . . . and enjoy an unusual screen show about seven very unusual Continental soldiers.

Walk past the 80-foot spires and you enter the era of the 1770's.

The thing that's a REAL stumper for me on this is that all indications are that the **VALLEY FORGE** souvenir WOULD have been made for the 1964 New York World's Fair, and likely run at the **CONTINENTAL INSURANCE PAVILION**. The moldset serial numbering dates it with plenty of time to spare for use at the NYWF, and there are a number of original moldsets still in existence which is also a typical indication of use at the NYWF. And the **CONTINENTAL INSURANCE PAVILION** even had a diorama display about **VALLEY FORGE**.



Cinema '76

... the amazing exploits of seven Continentals, their tales told through the medium of folksong. You won't forget this cast of characters ...

- ★ Timothy Murphy — the double-barrelled rifleman
- ★ John Glover — leader of the amphibious corps
- ★ Deborah Sampson — a soldier with a secret
- ★ George Washington — a man above men
- ★ Allan McLane — the eyes and ears of the new-born nation

and



Baron Von Steuben — master of the drill. Severe, but humorous and human, he cussed and shouted disorderly farmers into trained soldiers who could stand and fight.

and your host,

Henry Knox — artilleryman and patriot. A massive man weighing over 300 pounds, he nursed and pushed his artillery from battle to battle . . . and later became our country's first Secretary of War.



3-D Dioramas



Throughout the Pavilion you'll find audience-activated recreations of the sights and sounds of the Revolution. You'll feel you are there as you witness these stirring scenes . . .

- ★ Winter encampment at Valley Forge.
- ★ The Bonhomme Richard and the Serapis locked in combat off the English coast.
- ★ John Glover and his Marbleheaders ferrying Washington's troops to safety.
- ★ Paul Revere sounding the alarm.
- ★ General John Stark's raw troops routing the British regulars at Bennington, VT.
- ★ Sgt. William Jasper replacing the flag during the Battle of Fort Mifflin.
- ★ General Francis Marion, the "Swamp Fox", sharing his rations (sweet potatoes and water) with a British officer during negotiations for the exchange of prisoners.
- ★ Artillery specialist Henry Knox transporting heavy ordnance in the dead of winter.

*A heritage from
the American Revolution*

Pistols, long guns, powder horns, all play an important part in the world-famous collection of Revolutionary War artifacts on display at the pavilion.

Historical Paintings.

Compare the scenes you've witnessed in the dioramas with original oils from the turn of the century depicting these same events. Representative canvases from the Continental collection of paintings on Revolutionary War themes.

★ ★ ★

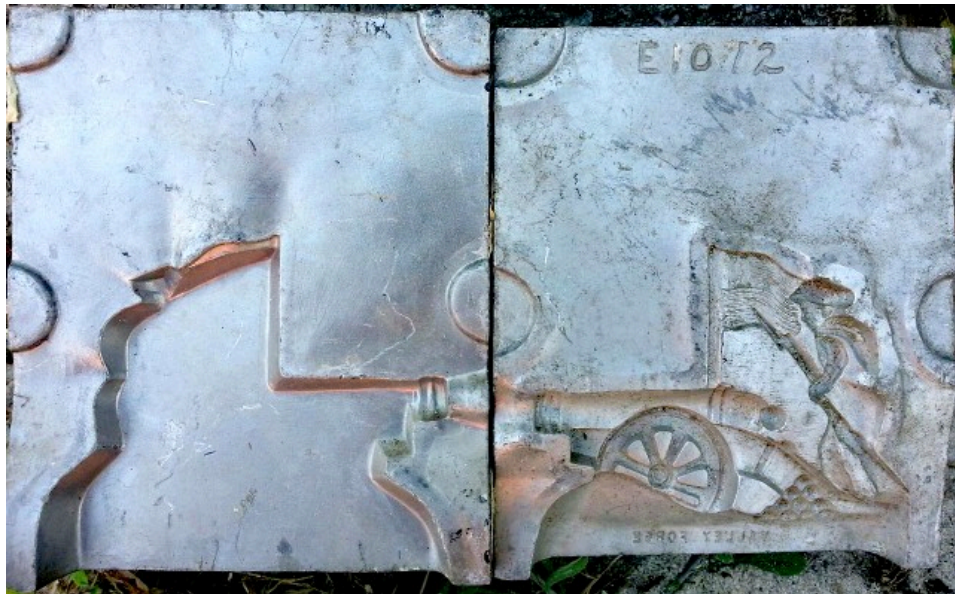
*The Continental Soldier
Welcomes you . . .*

to this unusual display. The symbol of safe, sure insurance protection, he looks forward to your visit.

**The CONTINENTAL
INSURANCE COMPANIES**
80 Maiden Lane, New York, N.Y. 10038



But our NYWF Mold-A-Rama employee - who has been spot-on with all other recollections about the NYWF - says that the **VALLEY FORGE** moldset was not at the 1964-65 new york World's Fair. So now it's up to us to figure this one out as a group. Do YOU know where the **VALLEY FORGE** moldset was originally vended in the 1960s? If so, please email us at [MoldvilleMachine@gmail.com](mailto: MoldvilleMachine@gmail.com)!



The **VALLEY FORGE** moldset is numbered 1072, which puts it a few months before the runup to the moldsets made for the 1964 New York World's Fair.

Disclaimers: The color and/or exact condition of the MOLD you get in the CLUB-A-RAMA may or may not be as shown. Not for children under 3.

Please visit the facebook page called 'Moldville', and 'LIKE' it, to keep up to date:
<http://www.facebook.com/pages/MOLDVILLE/156515454416041?success=1>

[Home](#) | [Disneyland TOY FACTORY](#) | [VOICE-O-GRAPH Record Booth](#) | [That 1960's SMELL!](#) | [CLUB-A-RAMA v1.0](#) | [CLUB-A-RAMA v2.0](#) | [01: space lab](#) | [02: cardinal](#) | [03: panda](#) | [04: chimpanzee](#) | [05: the general sherman](#) | [06: george washington](#) | [07: pavilion of electric power](#) | [08: przewalski's horse](#) | [09: jai-alai](#) | [10: macaw](#) | [11: riverboat](#) | [12: gemini space capsule](#) | [13: rattlesnake](#) | [14: lunar module](#) | [15: water ski girl](#) | [16: singing angel](#) | [17: southern belle](#) | [18: president johnson](#) | [19: pelican](#) | [20: king cobra](#) | [21: bull](#) | [22: Hackney's lobster](#) | [23: cockatoo](#) | [24: cowboy w/ bag](#) | [25: valley forge](#) | [26: miami airport](#) | [27: muddy mud hen](#) | [28: truman bust](#) | [29: large dolphin](#) | [30: space rail](#) | [31: standing lincoln](#) | [32: glass bottom boat](#) | [33: kitty bank](#) | [34: aardvark](#) | [35: chimp & baby](#) | [36: large JFK](#) | [37: stone mountain](#) | [38: bowling pin plaque](#) | [39: corky the clown](#) | [40: new york skyline](#) | [41: titan IIIc missile](#) | [42: walking bear](#) | [43: cow](#) | [44: clown](#) | [45: humble oil building](#) | [46: brontosaurus \(looking back\)](#) | [47: Roosevelt bust](#) | [48: coal car train](#) | [49: piggy bank](#) | [50: pirate](#) | [51: sea turtle](#) | [52: space shuttle in orbit](#) | [53: georgia state capitol](#) | [54: eisenhower bust](#) | [MILLER ALIEN Purple People Eater](#) | [The MOLD-A-RAMA Machine](#) | [History](#) | [1964 NY WORLDS FAIR questions answered!](#) | [Moldville RetroWax \(TM\)](#) | [Moldville MillerWax \(TM\)](#) | [FOR SALE: Vintage MOLD machine](#) | [Contact Us](#)