

MOLD-A-RAMA (moldarama) machine made in 1964 by Mold-A-Rama, Inc. for New York World's Fair, and Seattle World's Fair in 1962, is restored to its original glory to reissue souvenirs last seen half a century ago. MOLD-A-RAMA machine made in 1964 by Mold-A-Rama, Inc. for New York World's Fair, and Seattle World's Fair in 1962, is restored to its original glory to reissue souvenirs last seen half a century ago.

# MOLDVILLE.com

*Experience the souvenir fun of the 60s & 70s again, for the first time...*

(MOLDVILLE is not affiliated with **Mold-A-Rama, Inc.** of Chicago, IL nor with the 1960s company **Mold-A-Rama, Inc.** of Los Angeles, original operator of the "Disneyland Toy Factory.")

Website last updated: 04-18-2016



## Club-A-Rama v2.0

### WEEK 33

# KITTY BANK

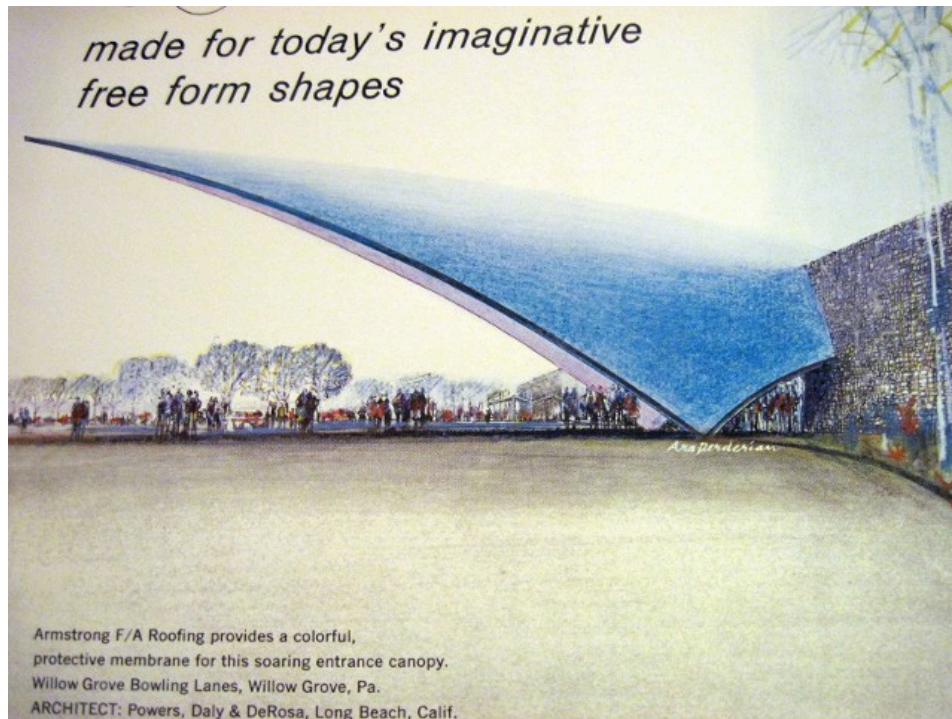
1963

Willow Grove Lanes, at Willow Grove Amusement Park, PA

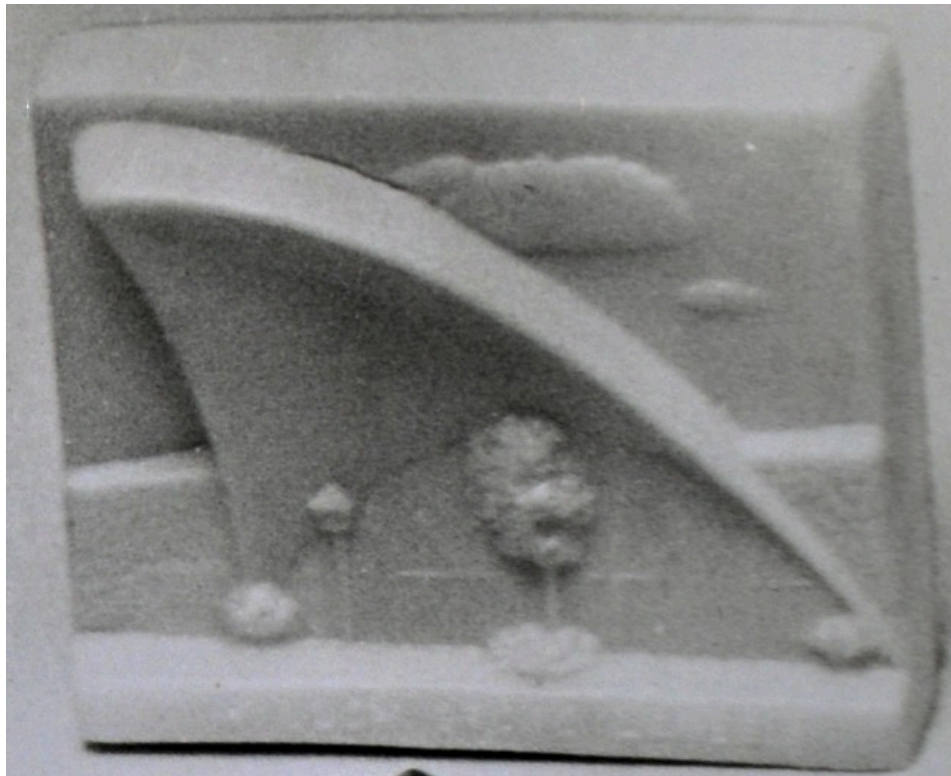


This week MOLDVILLE Club members get a souvenir made fifty (50) years ago for **WILLOW GROVE LANES**. Willow Grove Lanes was a massive bowling alley built in 1961 at the century-old Willow Grove Amusement Park in Pennsylvania, about 15 miles north of Philadelphia. Built by architects Powers, Daly and DeRosa, masters of the 'California-style' bowling center, it was an 800' long "V"-shaped building that took 15 months to build. The main entrance was highlighted by a solid parabola that swung skyward 116 feet and hovered over a multicolored water fountain situated in a miniature lake. When you entered the building your eye was drawn to a rotating turntable display of bowling paraphernalia. (Credit to the book "Diners, Bowling Alleys and Trailer Parks" by Andrew Hurley (2001), and to the Tikroom.)





We have had extraordinary problems molding the **KITTY BANK** without them cracking at the crease above the top of the swooping roof line of the bowling alley. Well, apparently that is nothing new. Check out the same crack even in the 1963 image of the **KITTY BANK** from a promotional photo put out by MOLD-A-RAMA (and used in later years by Eldin Irwin) entitled "MOLD-A-RAMA - BANK PROMOTION PROGRAM". ([It was posted previously with the weekly writeup about the BOWLING PIN.](#)) If yours has this particular crack, well, blame the original designers 50 years ago!







MOLDVILLE Club members should have lots of money saved by now as there are lots of banks in the lot of souvenirs over the years, and the KITTIE BANK is no exception! The slot at the top says "CUT HERE". The rest of the engraving reads:

**KITTIE BANK**

**WILLOW GROVE LANES**

**WORLDS LARGEST**

**EASTON RD. AT MORELAND RD**

**WILLOW GROVE PARK**

**PENNSYLVANIA**



The **KITTIE BANK** is a moldset that was custom-made for WILLOW GROVE LANES in 1963.

Disclaimers: The color and/or exact condition of the MOLD you get in the CLUB-A-RAMA may or may not be as shown. Not for children under 3.

Please visit the facebook page called 'Moldville', and 'LIKE' it, to keep up to date:  
<http://www.facebook.com/pages/MOLDVILLE/156515454416041?success=1>

[Home](#) | [Disneyland TOY FACTORY](#) | [VOICE-O-GRAPH Record Booth](#) | [That 1960's SMELL!](#) | [CLUB-A-RAMA v1.0](#) | [CLUB-A-RAMA v2.0](#) | [01: space lab](#) | [02: cardinal](#) | [03: panda](#) | [04: chimpanzee](#) | [05: the general sherman](#) | [06: george washington](#) | [07: pavilion of electric power](#) | [08: przewalski's horse](#) | [09: jai-alai](#) | [10: macaw](#) | [11: riverboat](#) | [12: gemini space capsule](#) | [13: rattlesnake](#) | [14: lunar module](#) | [15: water ski girl](#) | [16: singing angel](#) | [17: southern belle](#) | [18: president johnson](#) | [19: pelican](#) | [20: king cobra](#) | [21: bull](#) | [22: Hackney's lobster](#) | [23: cockatoo](#) | [24: cowboy w/ bag](#) | [25: valley forge](#) | [26: miami airport](#) | [27: muddy mud hen](#) | [28: truman bust](#) | [29: large dolphin](#) | [30: space rail](#) | [31: standing lincoln](#) | [32: glass bottom boat](#) | [33: kitty bank](#) | [34: aardvark](#) | [35: chimp & baby](#) | [36: large JFK](#) | [37: stone mountain](#) | [38: bowling pin plaque](#) | [39: corky the clown](#) | [40: new york skyline](#) | [41: titan IIIc missile](#) | [42: walking bear](#) | [43: cow](#) | [44: clown](#) | [45: humble oil building](#) | [46: brontosaurus \(looking back\)](#) | [47: Roosevelt bust](#) | [48: coal car train](#) | [49: piggy bank](#) | [50: pirate](#) | [51: sea turtle](#) | [52: space shuttle in orbit](#) | [53: georgia state capitol](#) | [54: eisenhower bust](#) | [MILLER ALIEN Purple People Eater](#) | [The MOLD-A-RAMA Machine](#) | [History](#) | [1964 NY WORLDS FAIR questions answered!](#) | [Moldville RetroWax \(TM\)](#) | [Moldville MillerWax \(TM\)](#) | [FOR SALE: Vintage MOLD machine](#) | [Contact Us](#)