

# Novice Standard

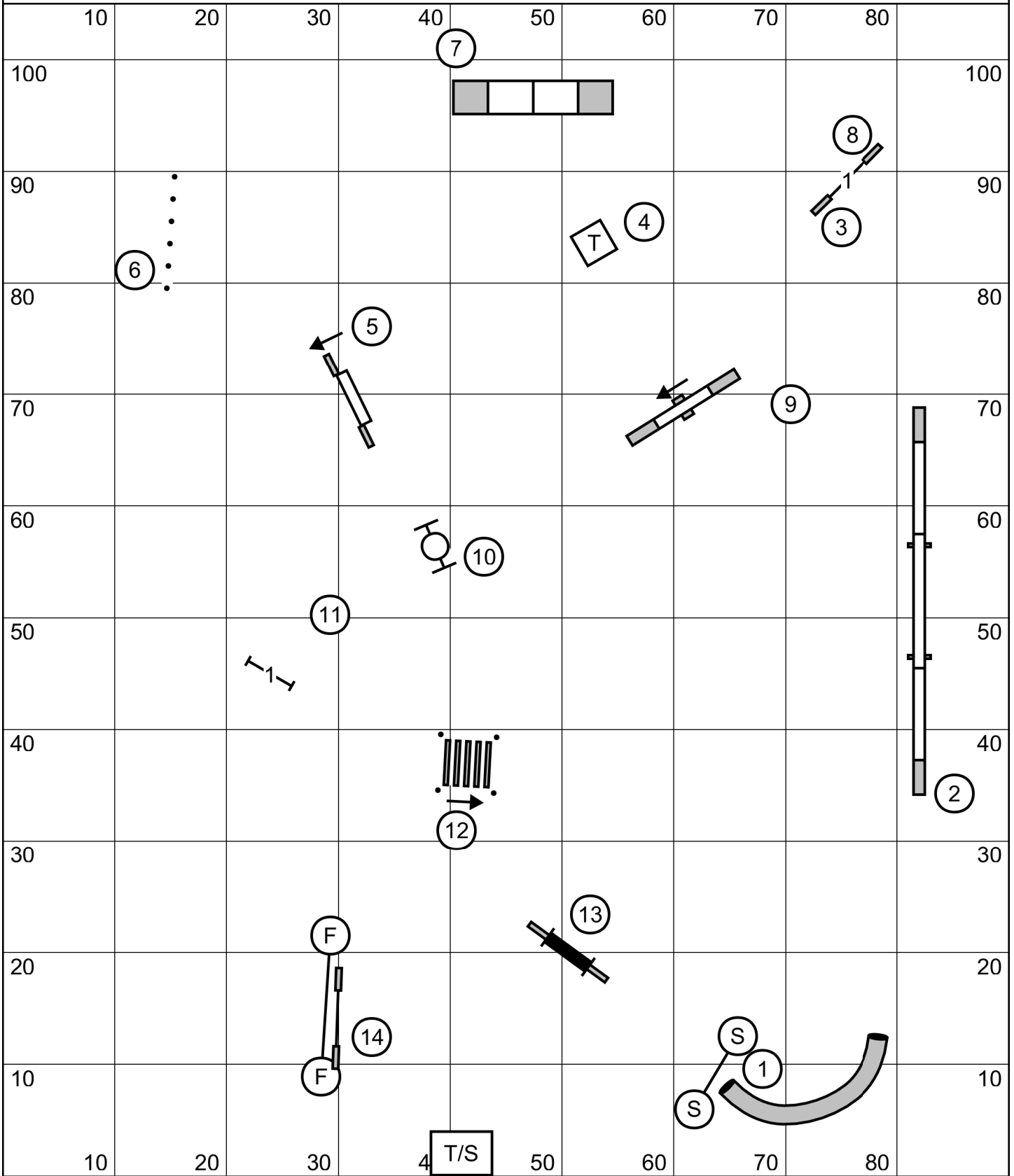
Indoors on artificial turf

Friday 25 November 2022

Gateway Agility Club of Suburban St. Louis

Trial

Judge Blair Kelly



# Open Standard

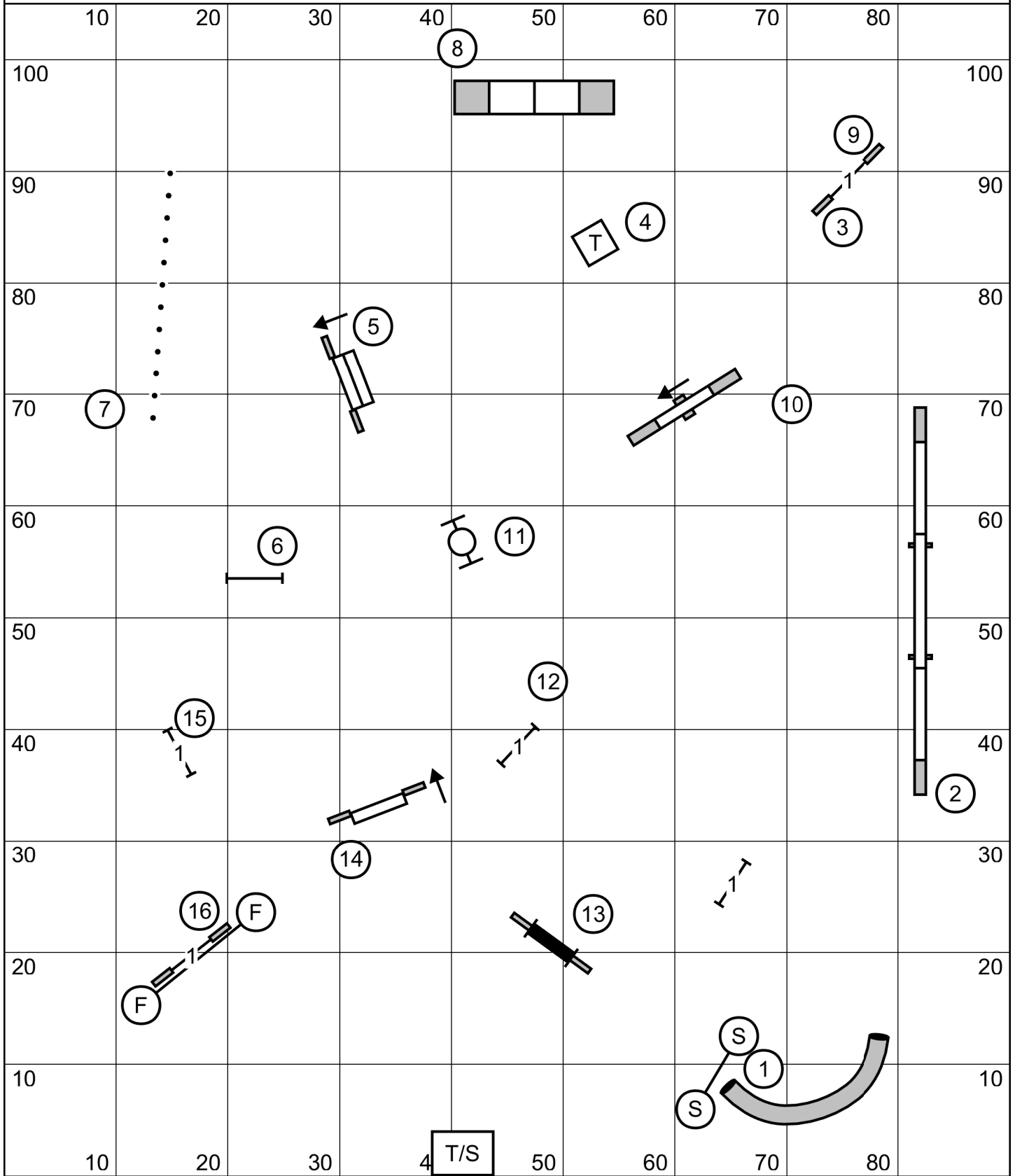
Indoors on artificial turf

Friday 25 November 2022

Gateway Agility Club of Suburban St. Louis

Trial

Judge Blair Kelly



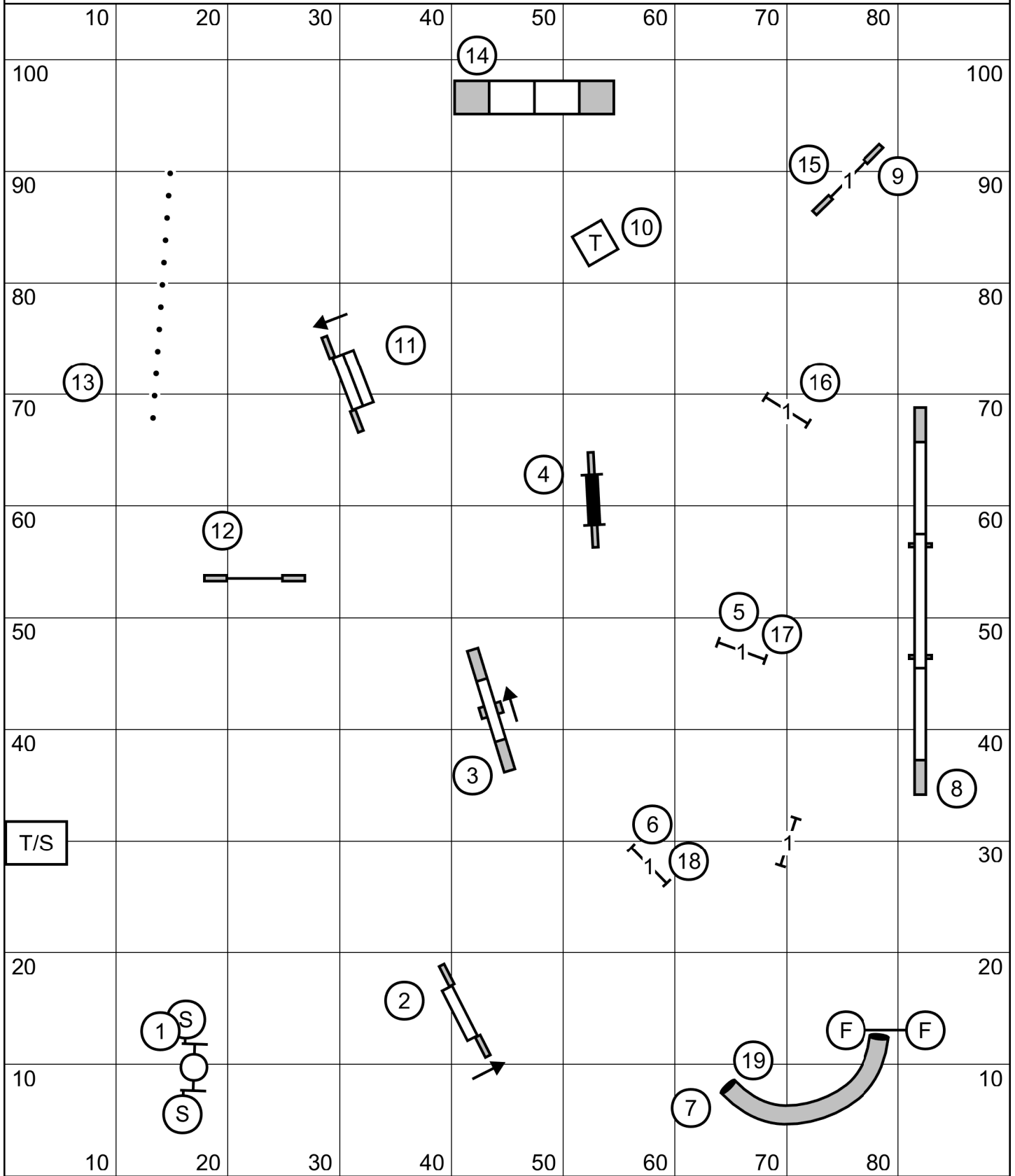
# Excellent/Master Standard

Indoors on artificial turf

Friday 25 November 2022

Gateway Agility Club of Suburban St. Louis  
Trial

Judge Blair Kelly



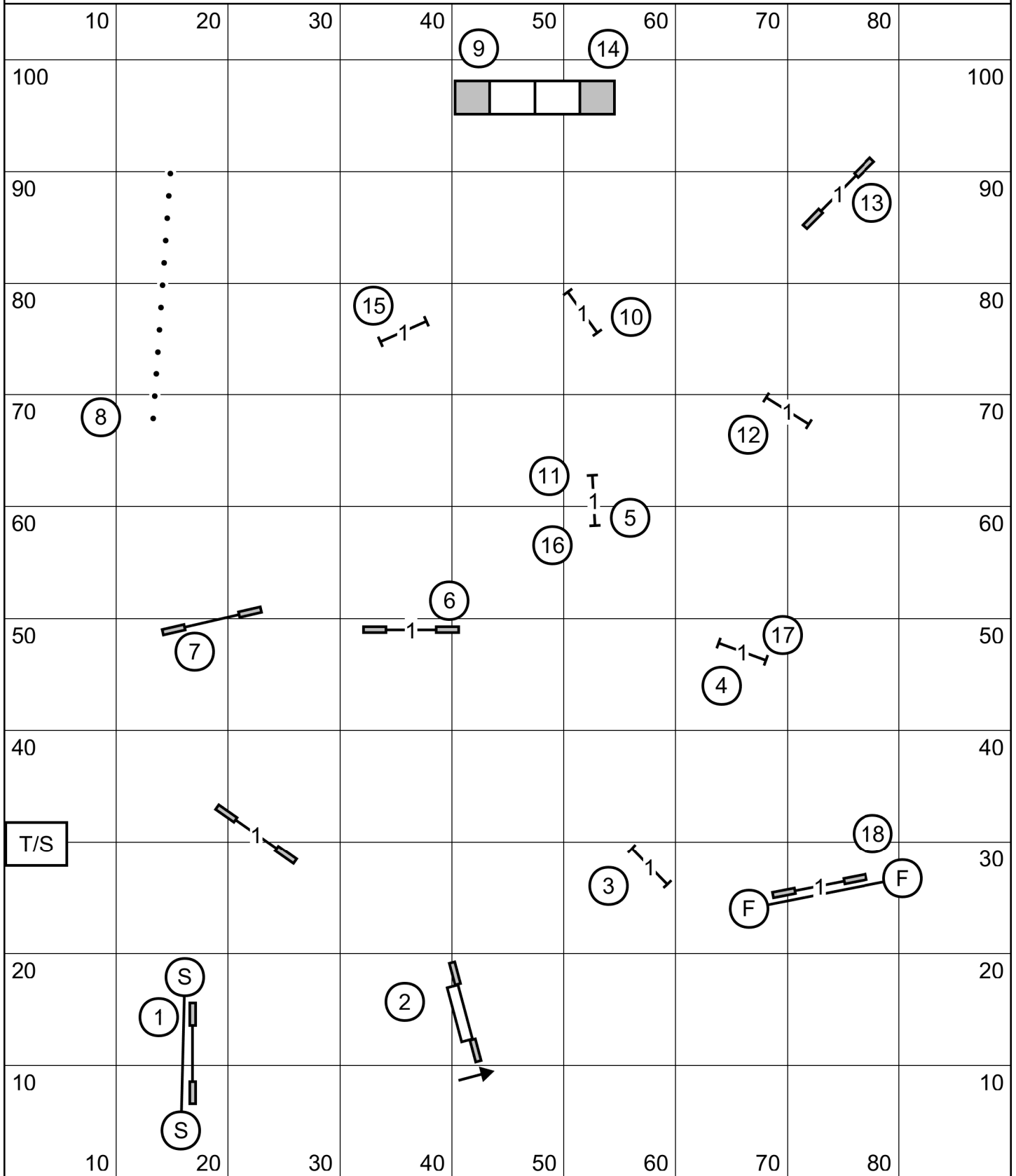
# Time 2 Beat

Indoors on artificial turf

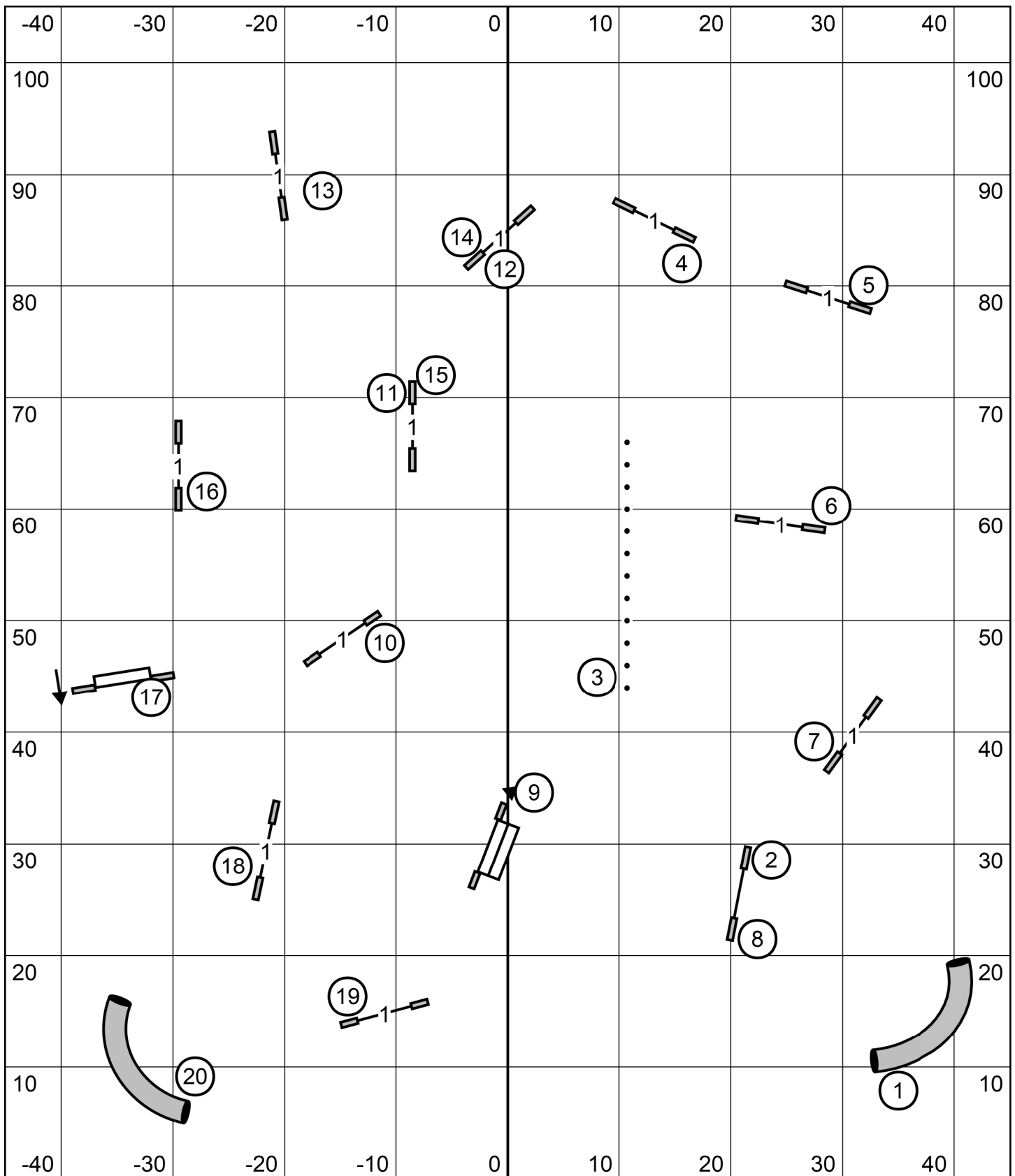
Friday 25 November 2022

Gateway Agility Club of Suburban St. Louis  
Trial

Judge Blair Kelly

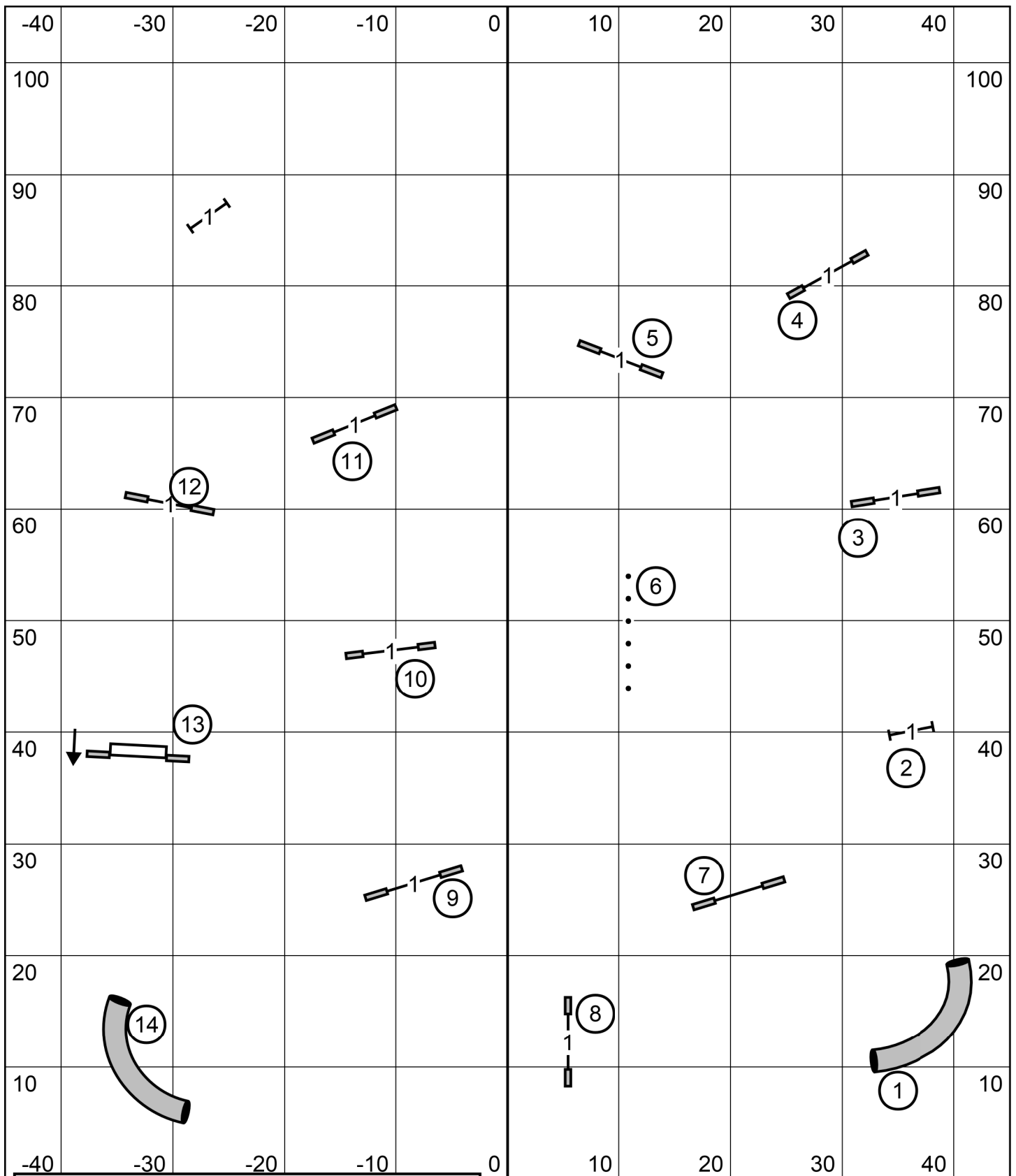






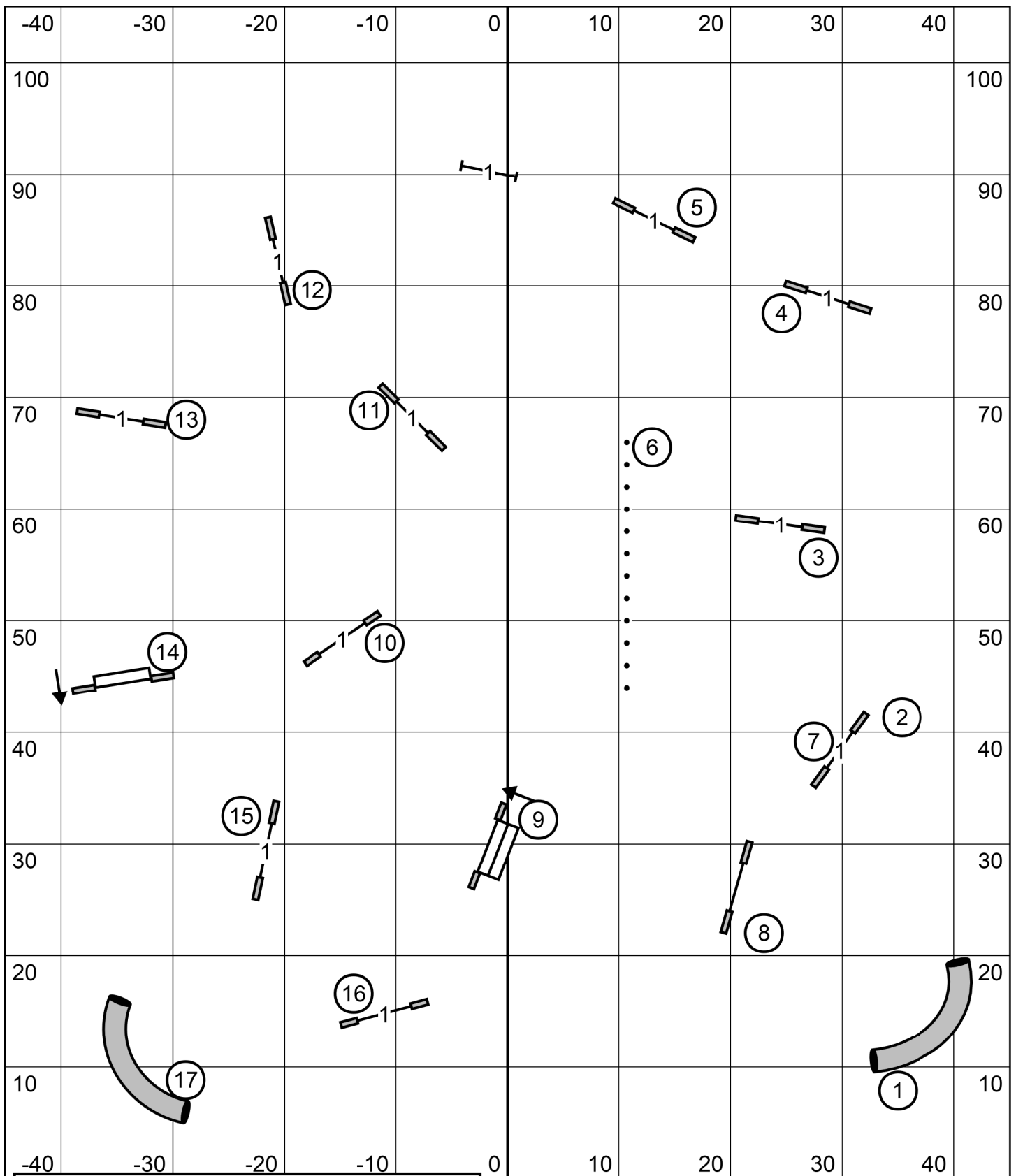
Gateway Agility Club Of Surburban St. Louis  
 Nov. 25, 2022, E/Master JWW  
 Judge: Bonnie McDonald

T&S



T&S

Gateway Agility Club Of Surburban St. Louis  
 Nov. 25, 2022, Novice JWW  
 Judge: Bonnie McDonald



Gateway Agility Club Of Surburban St. Louis  
 Nov. 25, 2022, Open JWW  
 Judge: Bonnie McDonald

T&S



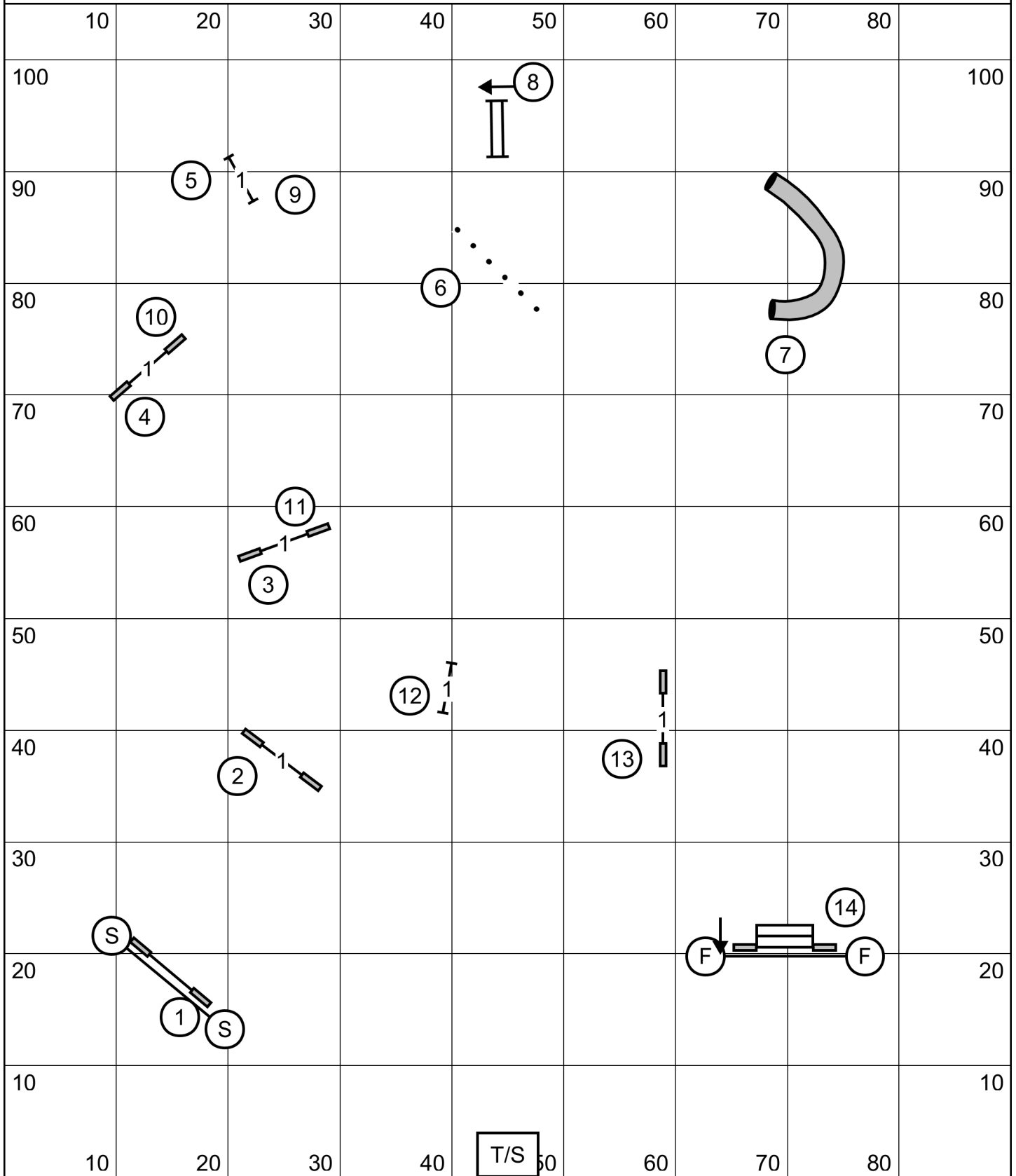
# Novice JWW

Indoors on artificial turf

**Saturday** 26 November 2022

Gateway Agility Club of Suburban St. Louis  
Trial

Judge Blair Kelly



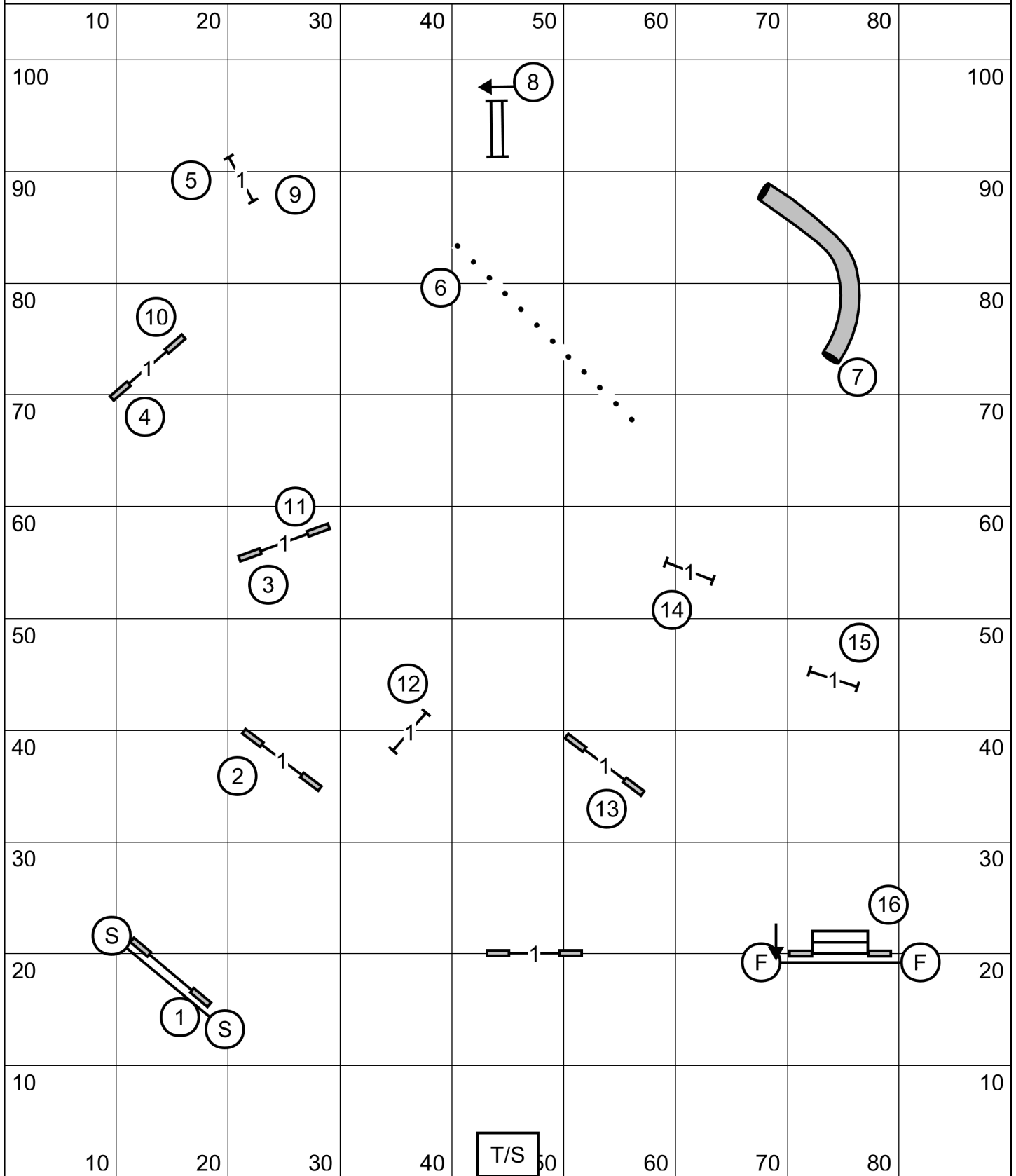
# Open JWW

Indoors on artificial turf

**Saturday** 26 November 2022

Gateway Agility Club of Suburban St. Louis  
Trial

Judge Blair Kelly



# Premier JWW

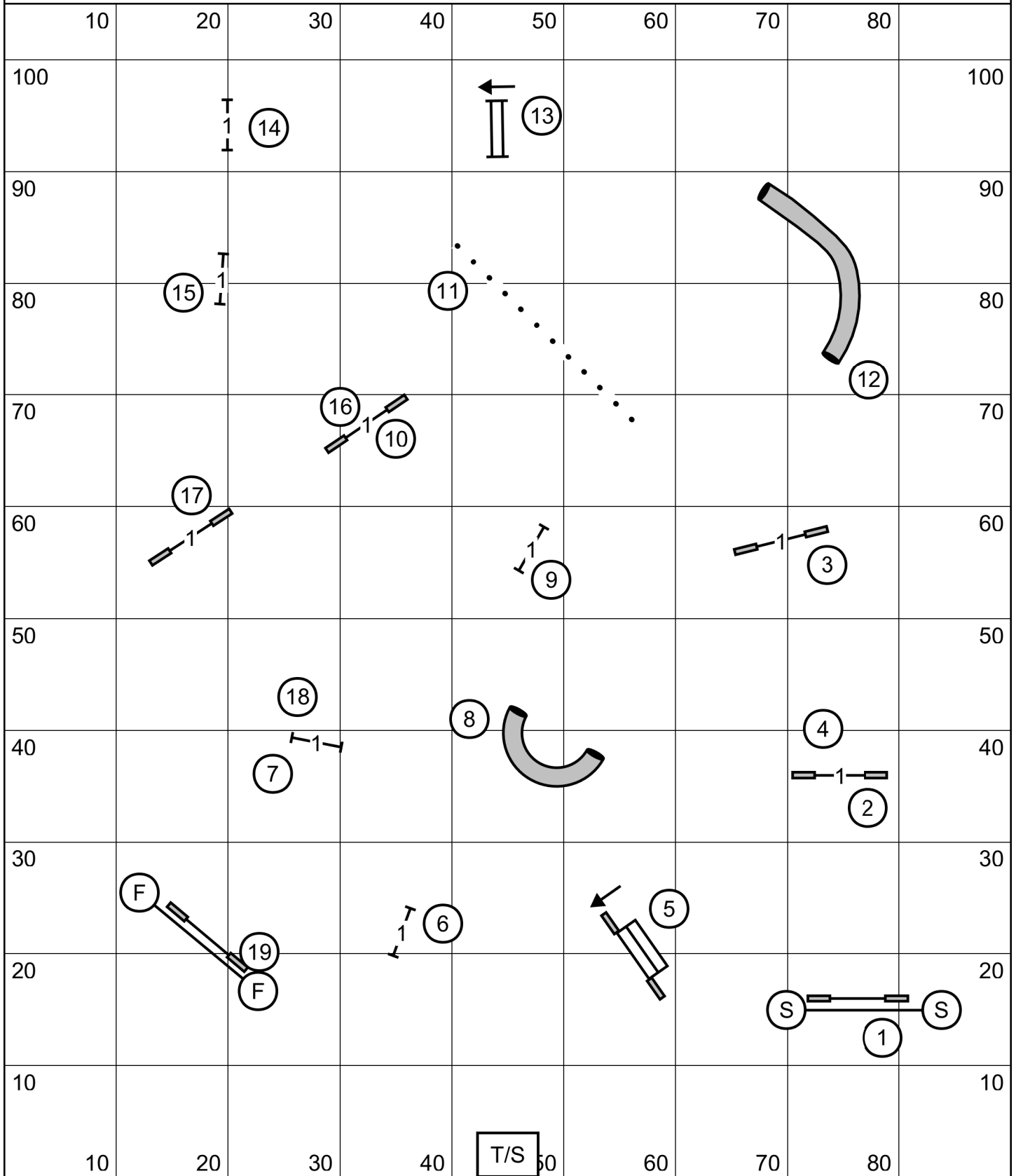
Indoors on artificial turf

**Saturday** 26 November 2022

Gateway Agility Club of Suburban St. Louis

Trial

Judge Blair Kelly



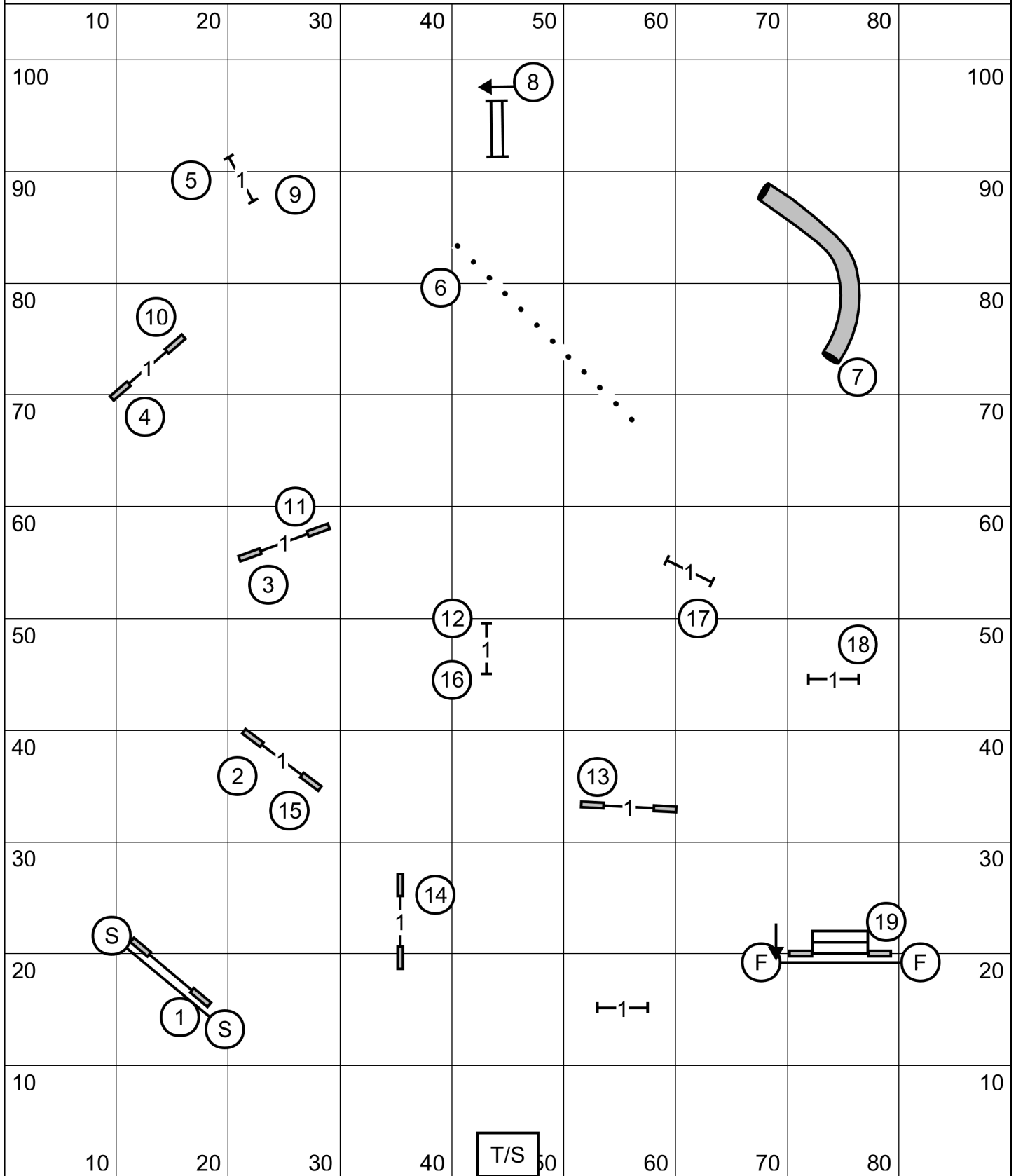
# Excellent/Master JWW

Indoors on artificial turf

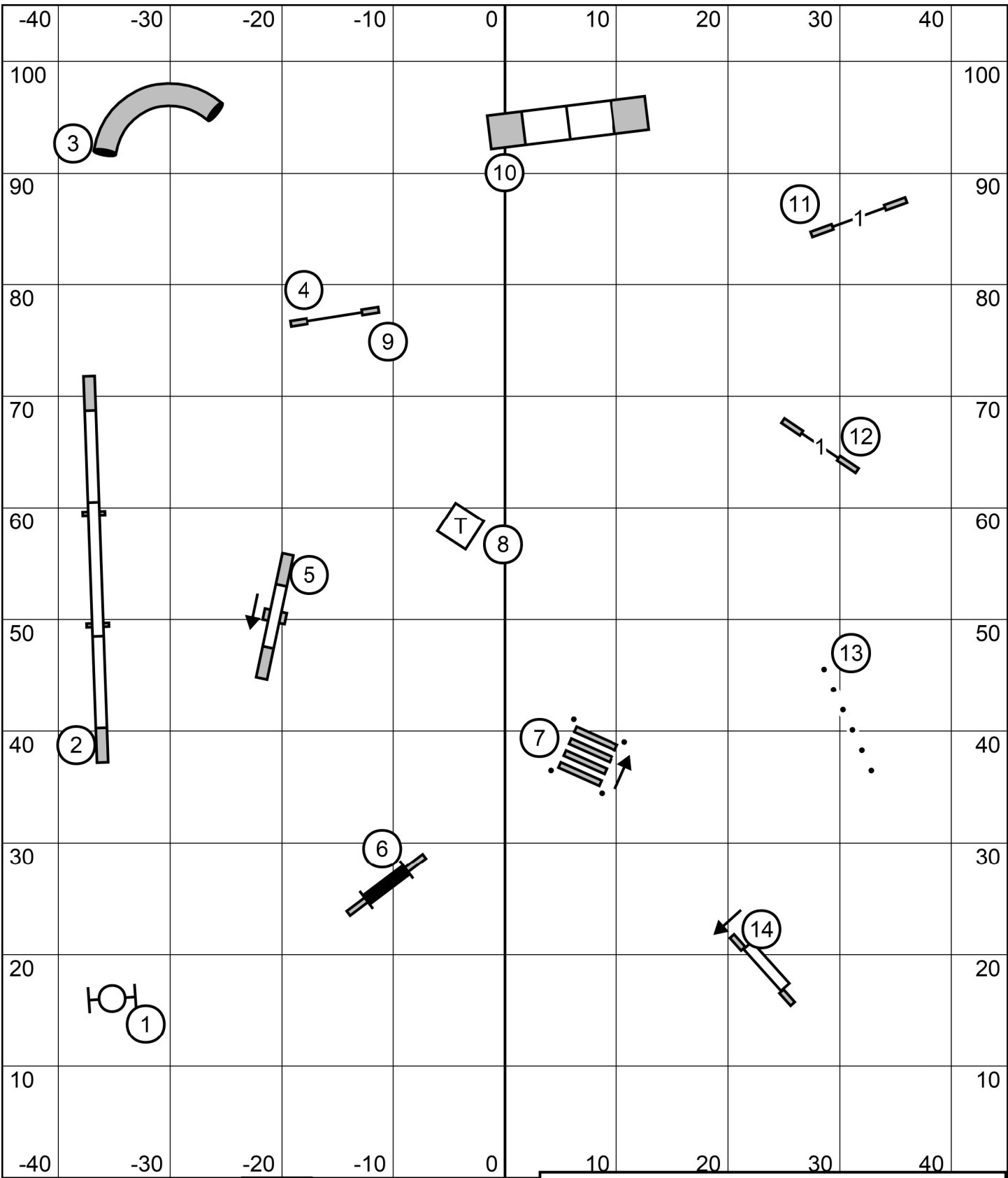
**Saturday** 26 November 2022

Gateway Agility Club of Suburban St. Louis  
Trial

Judge Blair Kelly

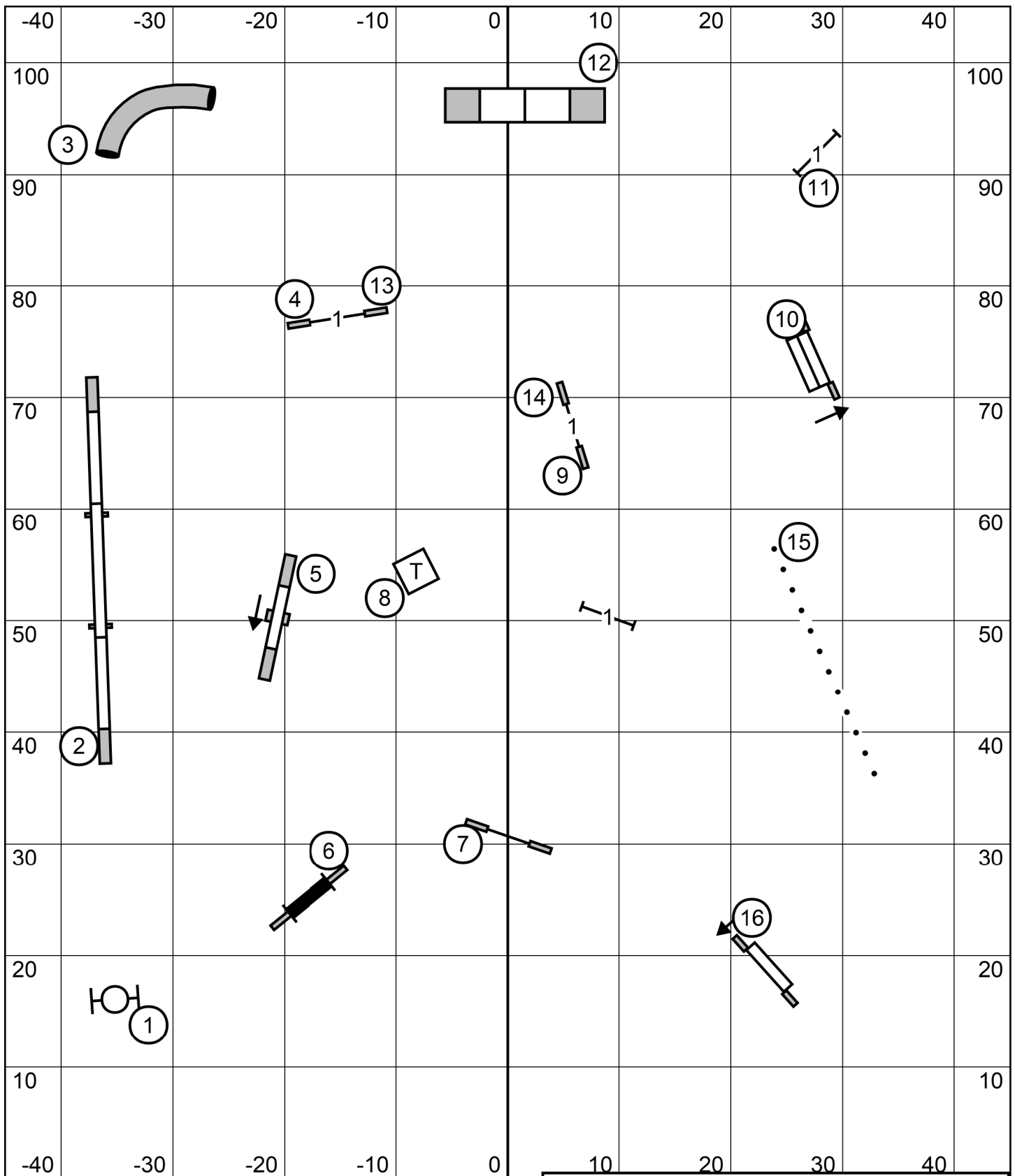






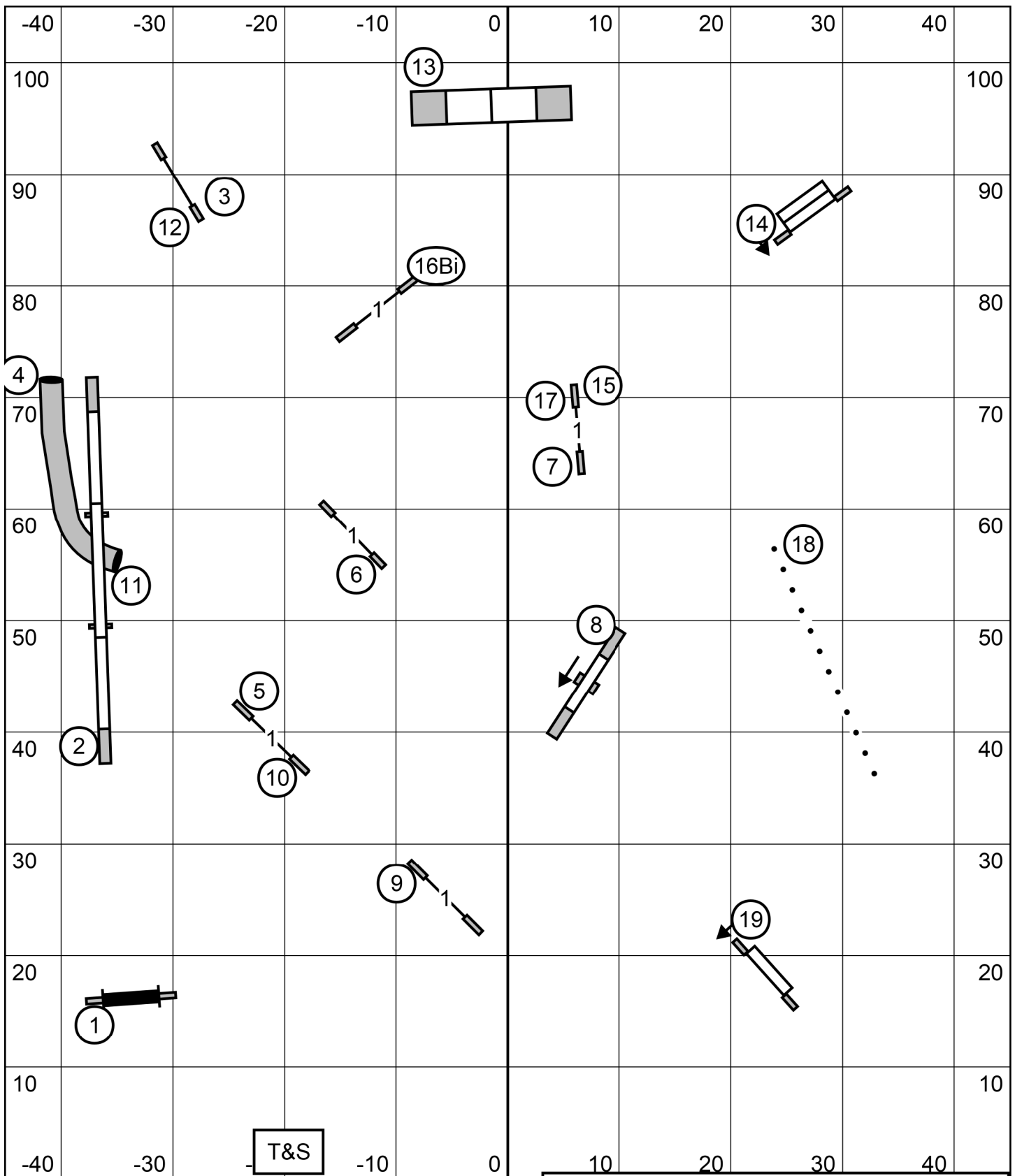
T&S

Gateway Agility Club Of Surburban St. Louis  
 Nov 26, 2022, Novice Standard  
 Judge: Bonnie McDonald



T&S

Gateway Agility Club Of Surburban St. Louis  
 Nov 26, 2022, Open Standard  
 Judge: Bonnie McDonald



Gateway Agility Club Of Surburban St. Louis  
 Nov 26, 2022, Premier Standard  
 Judge: Bonnie McDonald



# Novice Standard

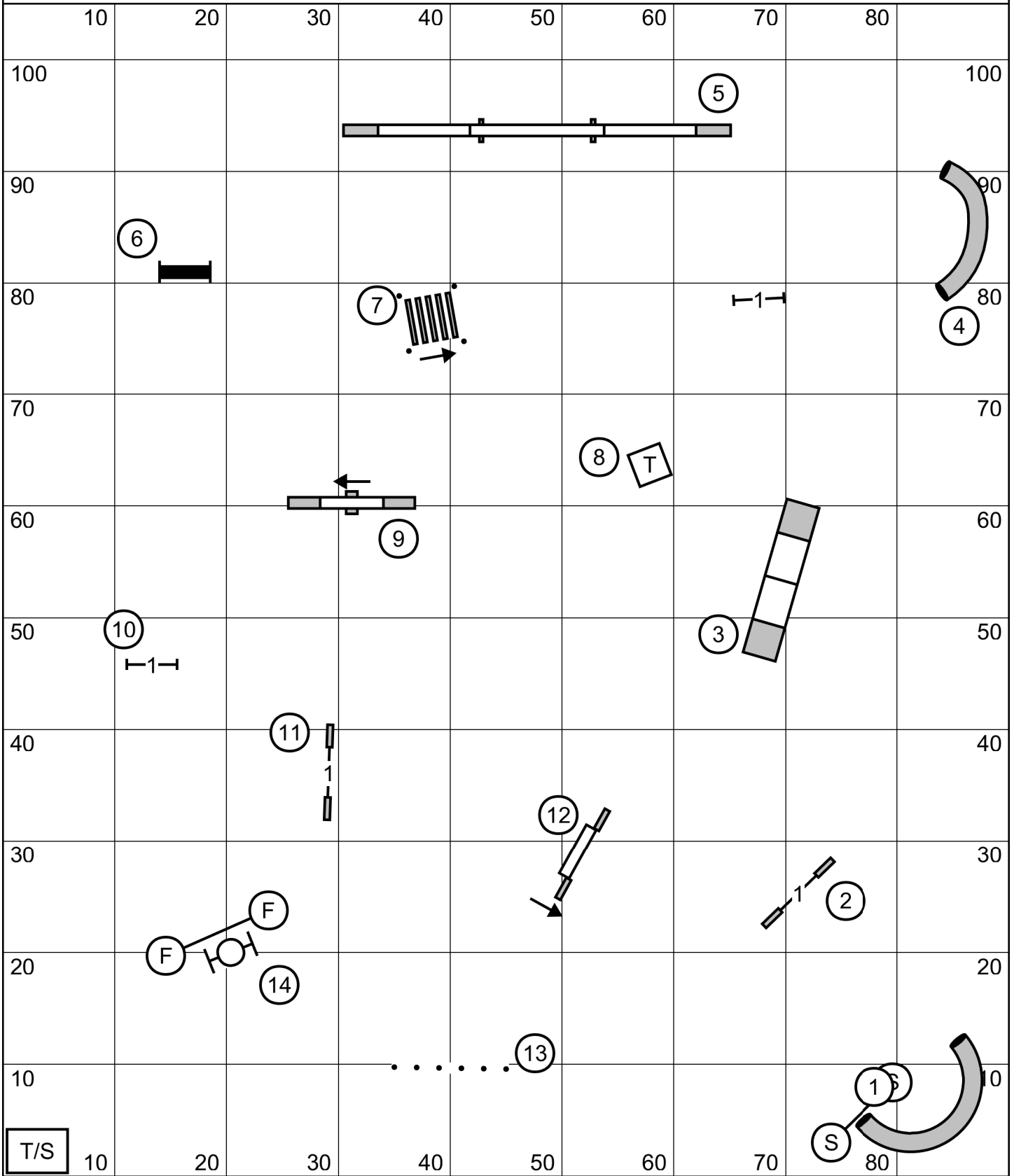
Indoors on artificial turf

Sunday 27 November 2022

Gateway Agility Club of Suburban St. Louis

Trial

Judge Blair Kelly



# Open Standard

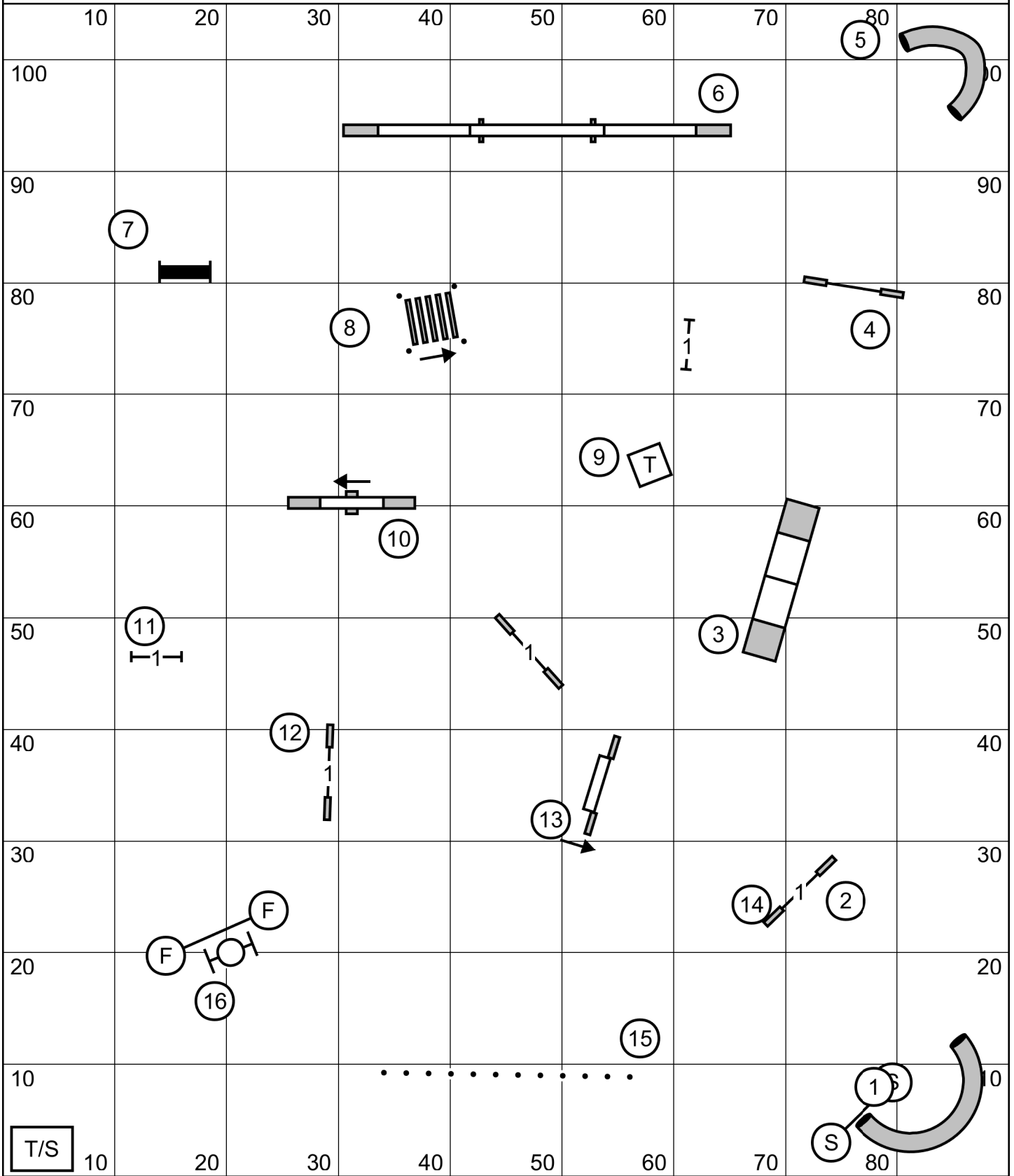
Indoors on artificial turf

Sunday 27 November 2022

Gateway Agility Club of Suburban St. Louis

Trial

Judge Blair Kelly



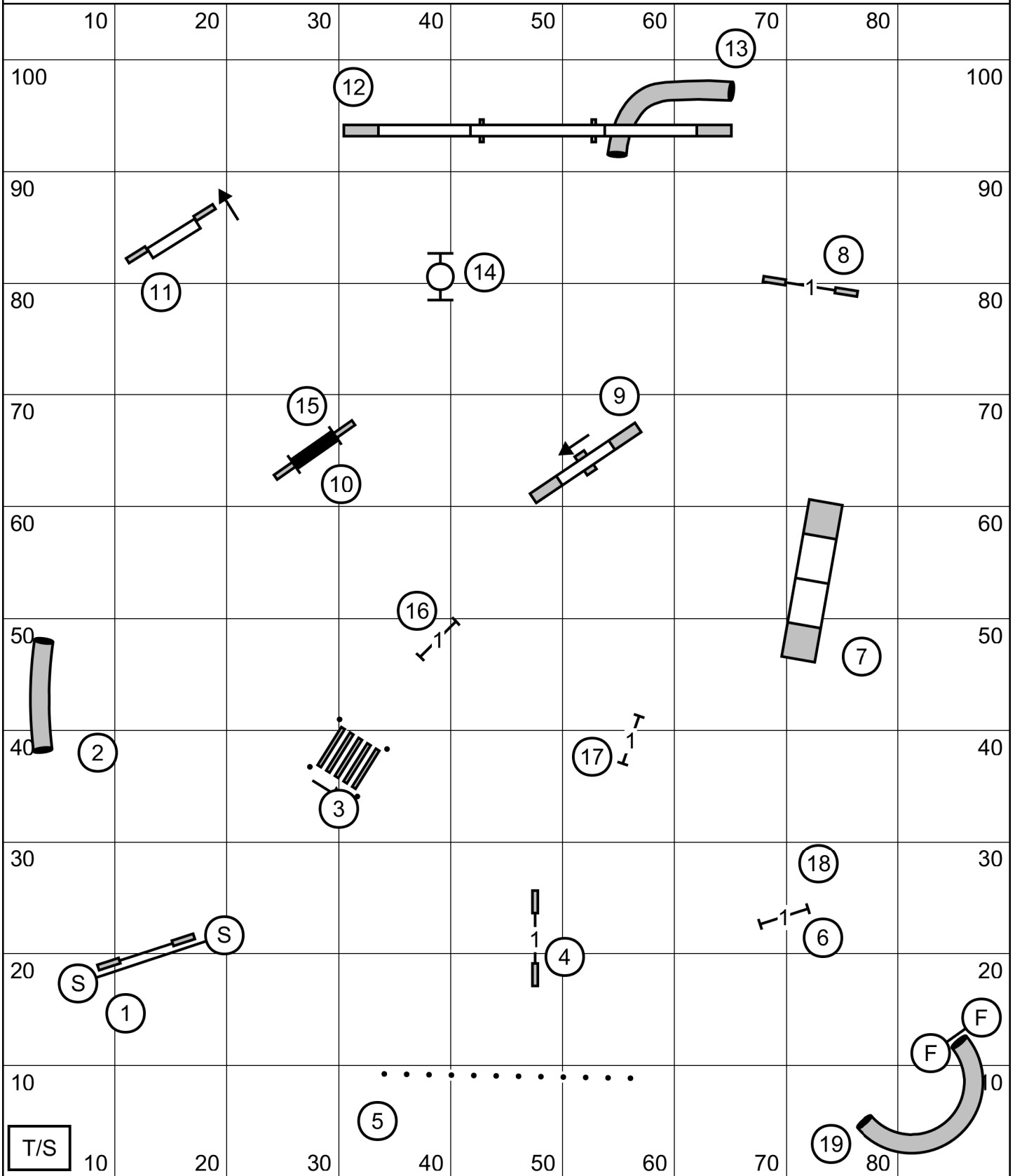
# Excellent/Master Premier

Indoors on artificial turf

Sunday 27 November 2022

Gateway Agility Club of Suburban St. Louis  
Trial

Judge Blair Kelly



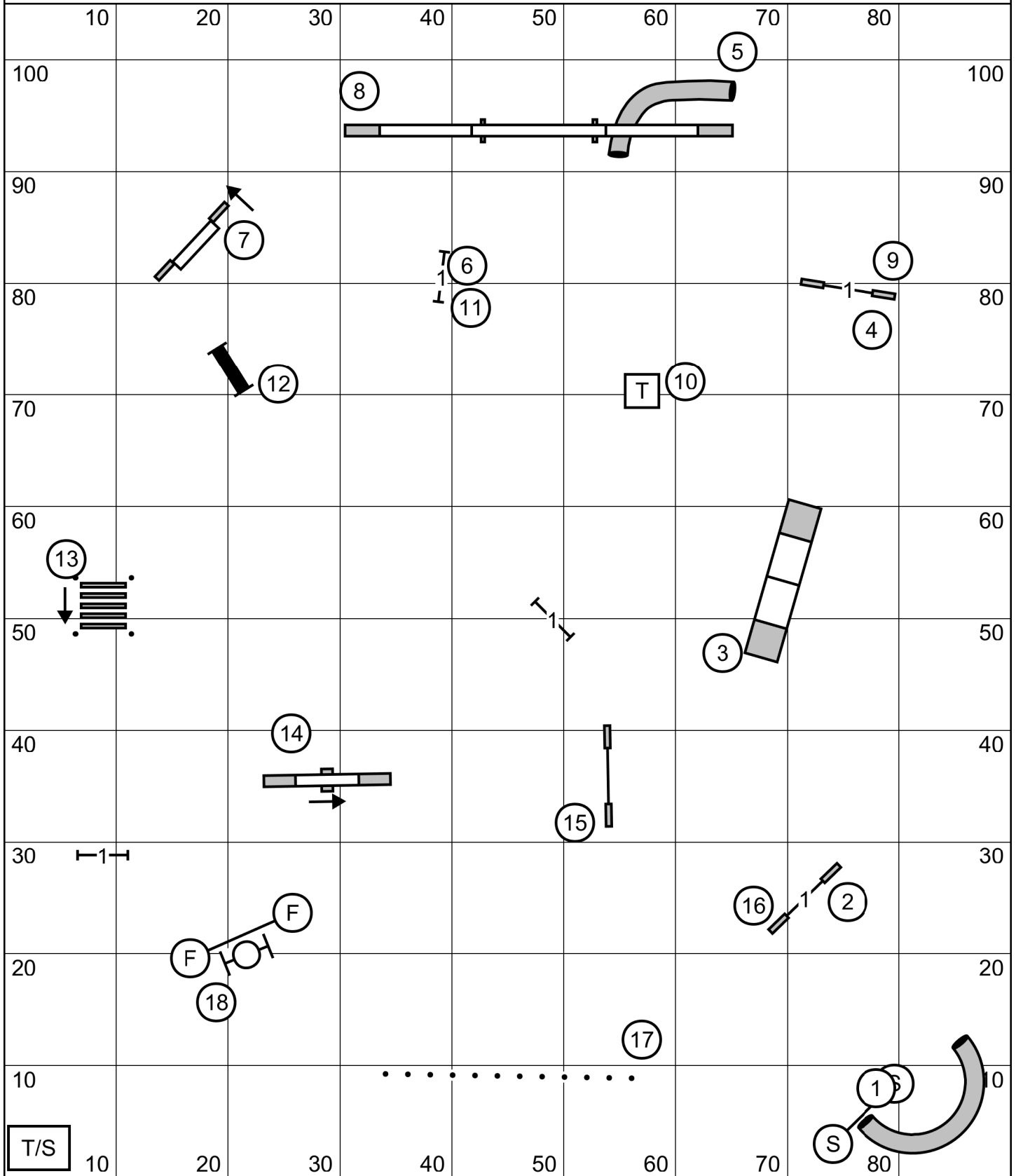
# Excellent/Master Standard

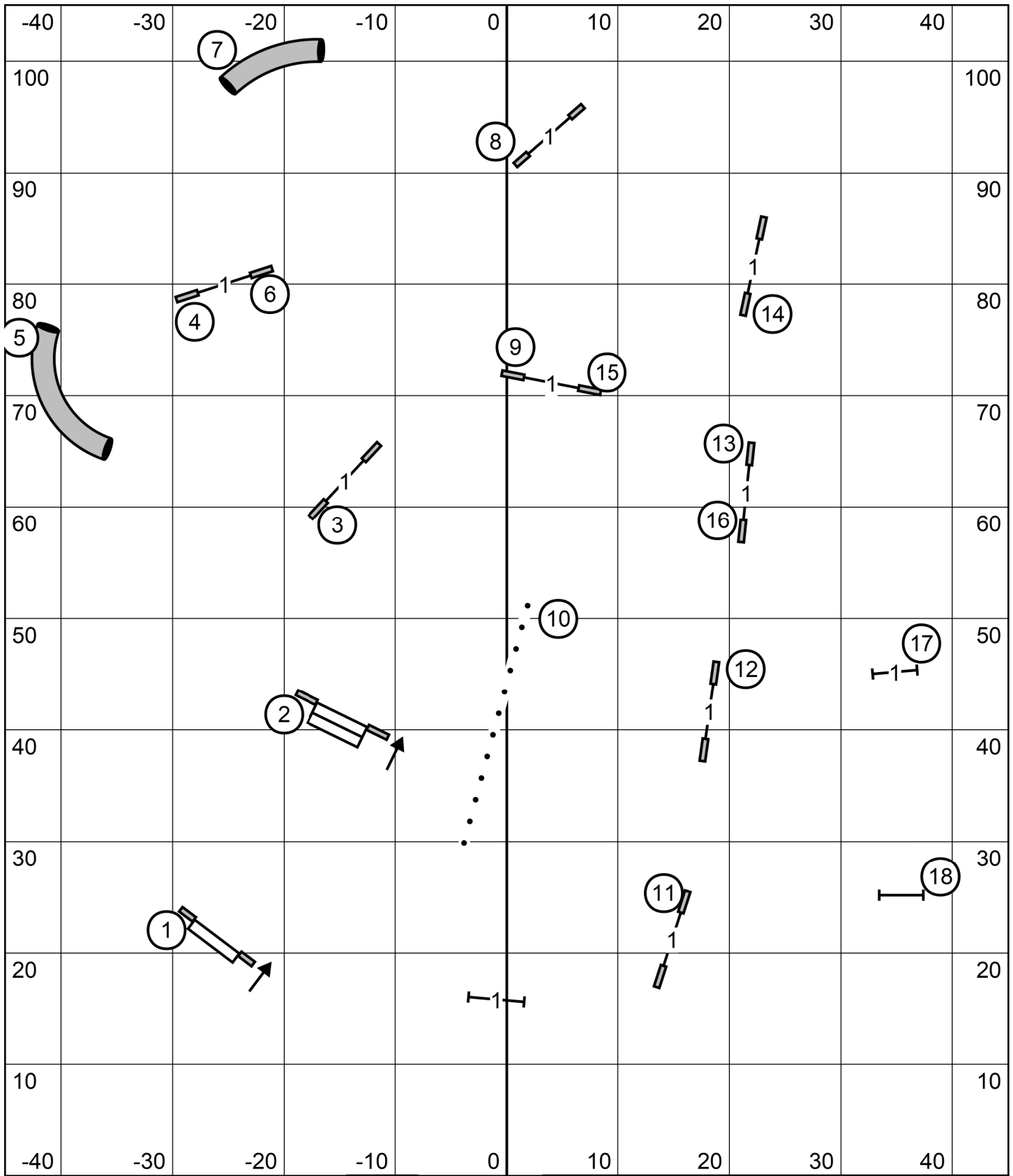
Indoors on artificial turf

**Sunday** 27 November 2022

Gateway Agility Club of Suburban St. Louis  
Trial

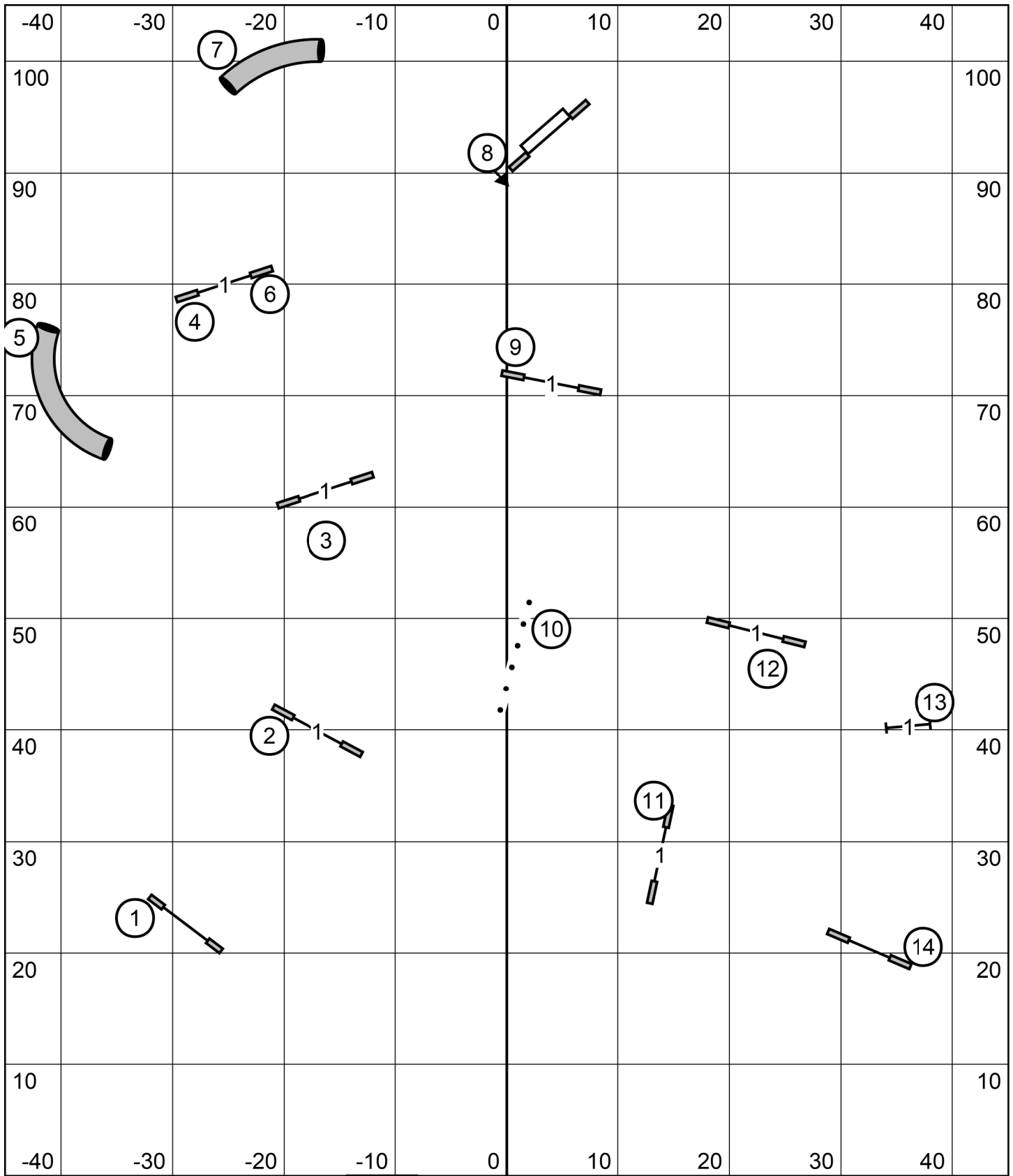
Judge Blair Kelly





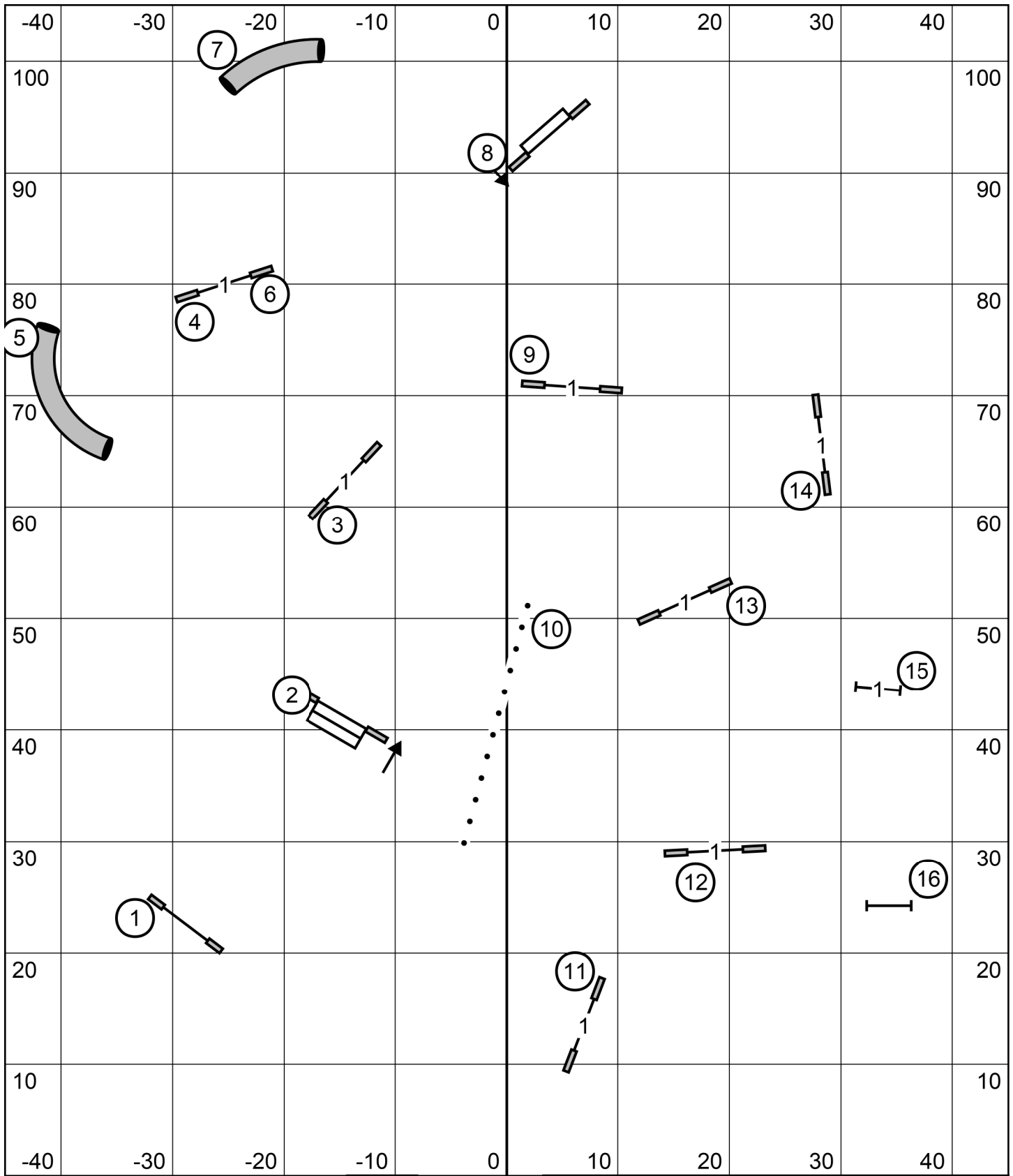
T&S

Gateway Agility Club Of Surburban St. Louis  
 Nov 27, 2022, E/Master JWW  
 Judge: Bonnie McDonald



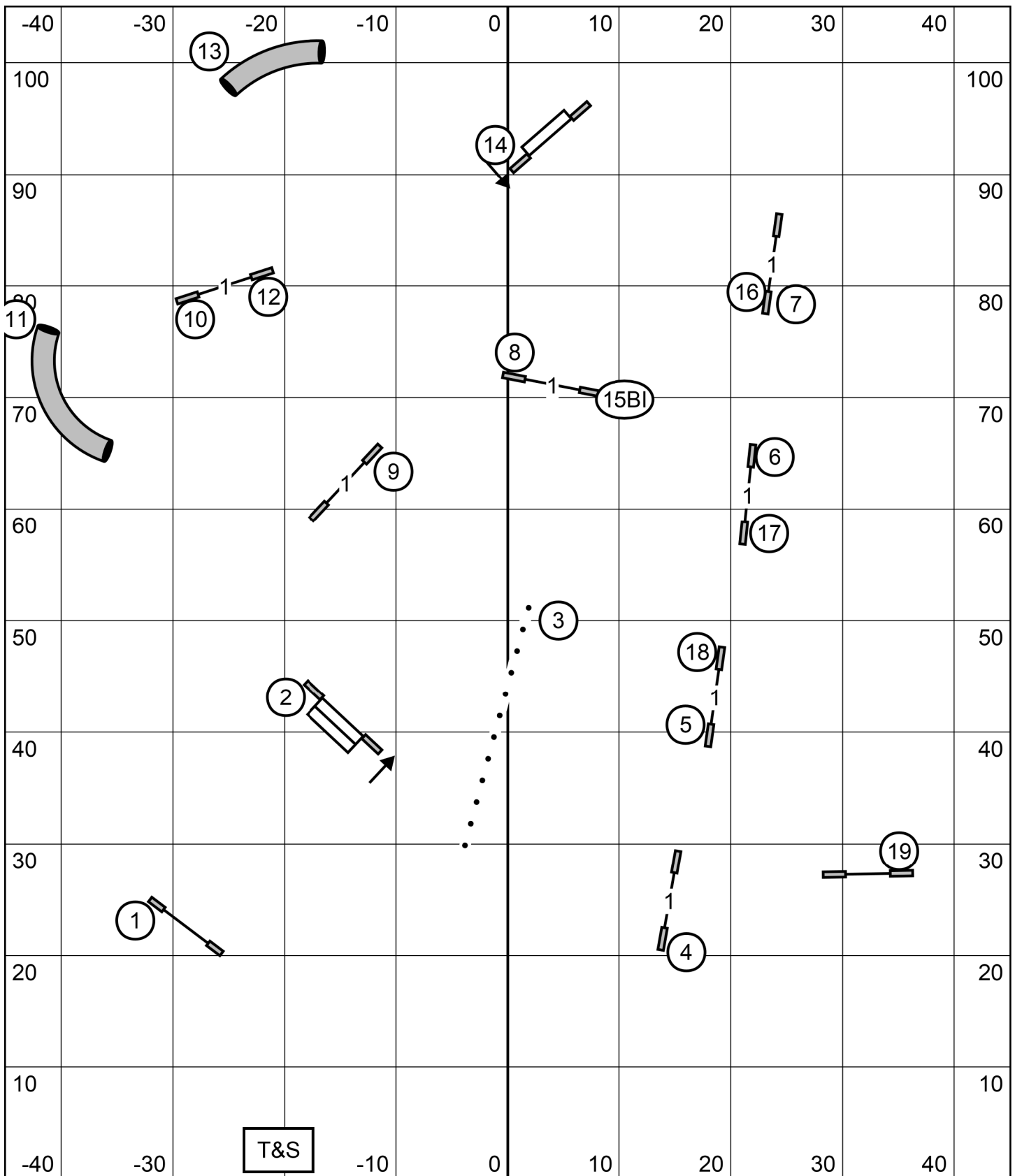
T&S

Gateway Agility Club Of Surburban St. Louis  
 Nov 27, 2022, Novice JWW  
 Judge: Bonnie McDonald



T&S

Gateway Agility Club Of Surburban St. Louis  
 Nov 27, 2022, Open JWW  
 Judge: Bonnie McDonald



Gateway Agility Club Of Surburban St. Louis  
 Nov 27, 2022, Premier JWW  
 Judge: Bonnie McDonald