

FAMOUS BOATS of the LAKE

Although most of the histories of the large excursion boats have faded away with time. The last records are preserved in the old postcards of that time.

The City of Webster

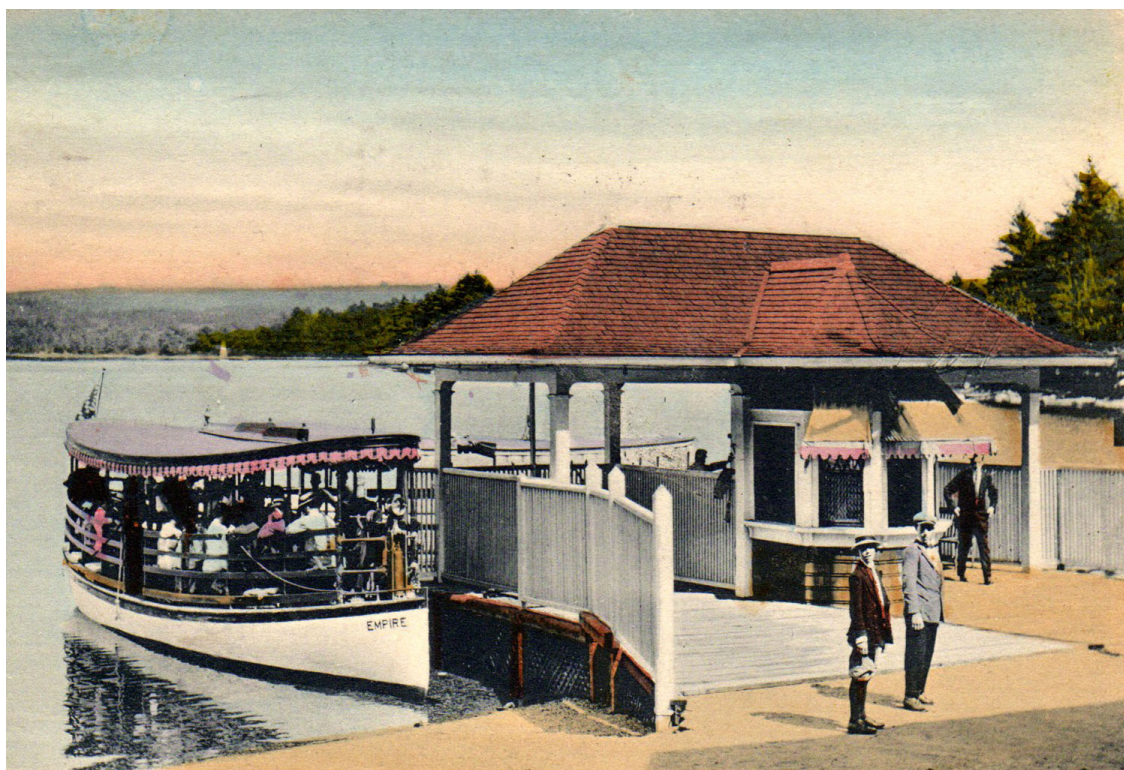


This vessel was the largest of the excursion boats. It was approximately 60 feet long and carried 100 passengers and was on the Lake until the late 1930s. It was built in Boston in the 1890s and towed with a team of oxen to the Lake.

In this postcard, Goat Island is behind the stern of the vessel. This picture shows it with a stack. Later postcards do not have a stack. Maybe a conversion to a gasoline engine?

In the 1930s, prior to World War II, she was in poor shape. Instead of repairing her, she was used as a bonfire on North Pond and sunk during a 4th of July celebration.

The Empire



The vessel is Shown leaving the Beacon Park Dock. Notice the ticket booth and dress style.

The Leslie



Notice the City of Webster approaching from the right. The vessel is at the Beacon Park Dock.

The Point Breeze



The vessel is Shown from the Beacon Park Entertainment Stage.

The Point Breeze



The vessel is Shown from the Beacon Park Entertainment Stage.