

## eco300 Controllers

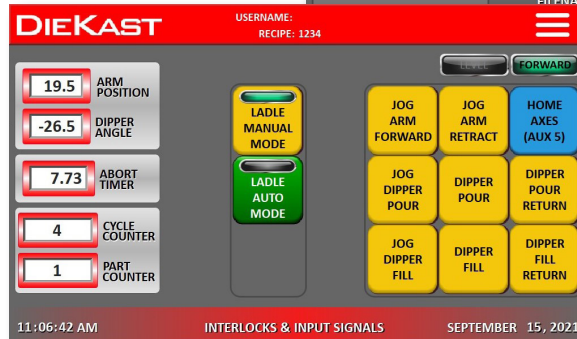
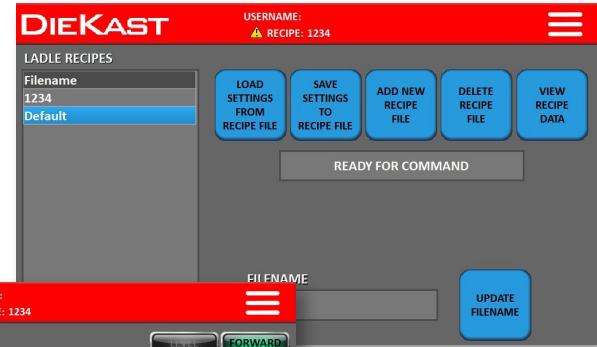


DieKast eco300 ladle controllers are an affordable solution to outdated 305 ladle controls. The eco300 controller has all the features users upgrading from Micro or Triangle controllers are familiar with along with new features only available on higher-end new controls from the OEM. The eco300 controllers are built using the reliable and powerful Allen Bradley Micrologix 1400 processor. The programming and information display have been simplified to include an operator interface with a 7" color touch screen, along with push buttons for common functions. The operator interface program is engineered so that operators familiar with existing Micro, Triangle or 300 series controls, will be able to program and navigate through screens quickly, with little or no additional training. Full-text fault messages and built-in troubleshooting suggestions help get you back up and running faster.

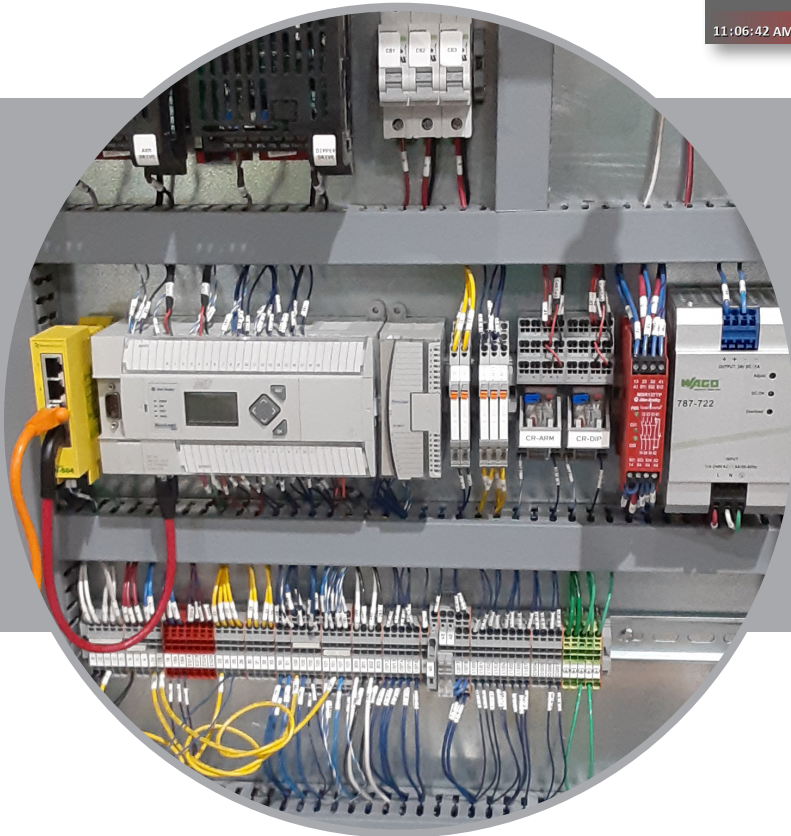
The eco300 controllers come standard with a 32 pin OEM quick-disconnect receptacle on the side of cabinet making installation and disconnecting the ladle for maintenance quick, easy, and safe for personnel.

## SYSTEM FEATURES

- Allen Bradley Micrologix processor and I/O modules
- 7" Color touch screen
- Dual DC drives for simultaneous operation of arm & dipper motor
- Push Buttons mounted in the cabinet door are operator friendly
- Full text description for faults
- Pop up info window for all setting descriptions
- Stores 500 user defined setup programs
- Ability to password protect set up screens
- Compatible with 24VDC rotary encoders
- Accommodates 3 & 5 wire metal probe setups



Informative screens easy to navigate through for set up and operation.



## OPTIONAL FEATURES

- Remote Push button station
- Customer specific screens
- Custom push button and selector switch layouts for manual operations
- Quick disconnect plug for machine interlocks
- Electrical panel air conditioner
- Controller stand
- eWon for remote access, trouble shooting & upgrades \*

\* Requires purchase of eWon unit

## SPECIFICATIONS

- 30"X24"X8" NEMA 4/12/13/IP66 enclosure
- Input voltage 120 VAC
- 24 VDC logic
- Ambient temperature 50°C (122°F)



Allen Bradley Micrologix 1400 processor, 1766-L32BWAA with 16PT input module 1762-IQ16