



# VISION DISTRIBUTION

Tél : (514) 492-1234

Email : [info@distribution-vision.com](mailto:info@distribution-vision.com)

Site web : [www.distribution-vision.com](http://www.distribution-vision.com)



## SOUP KETTLE

- Black coated
- With stainless steel inner pan and hinged lid
- Fitted with power regulator , temperature range 30 to 85 degree, help to keep the best taste of the soup
- Folded rim on the barrel edge
- Removable structure, easy to clean and operate
- Handle fasten by screw, avoid the risk of poor welding
- Skid resistance rubber feet, prevent from scratching the table and anti-skid
- Safe circuit design with the wire grounding
- Ideal for buffets



code	CBM	capacity	v	w	mm
431901	0.052	10L	220-240V	400W	Ø340xH370



## SOUP KETTLE

- stainless steel soup warmer also boasts a large capacity
- comes with an easy-to-use temperature knob.
- Instead of a black finish, this soup kettle features a shiny metal exterior that looks polished and professional on top of buffet tables.
- Just add water to the kettle and place the inset inside to keep hot soups, stews, chilies, and sauces at safe serving temperatures.



code	CBM	capacity	v	w	mm
431903	0.052	10L	220-240V	400W	Ø340xH370



## SOUP KETTLE

- stainless steel soup warmer also boasts a large capacity
- comes with an easy-to-use temperature knob.
- soup kettle features with the black finished or a shiny metal exterior that looks polished and professional on top of buffet tables, different color for identify different foods
- Just add water to the kettle and place the inset inside to keep hot soups, stews, chilies, and sauces at safe serving temperatures.

**NEW ITEM!**



code	CBM	capacity	v	w	mm
431905	0.037	10L	220-240V	400W	Ø300xH380



## SOUP KETTLE



code	CBM	capacity	v	w	mm
431902	0.052	10L	220-240V	400W	φ340xH370



## SOUP KETTLE

- stainless steel soup warmer also boasts a large capacity
- comes with an easy-to-use temperature knob.
- soup kettle features with the black finished or a shiny metal exterior that looks polished and professional on top of buffet tables,different color for identify different foods
- Just add water to the kettle and place the inset inside to keep hot soups, stews, chilies, and sauces at safe serving temperatures.

**VISION**  
DISTRIBUTION



code	CBM	capacity	v	w	mm
431904	0.076	13L	220-240V	400W	Ø380xH360

BUY IT AT LESSER PRICES

178







-Hydraulic hinge handle

## STAINLESS STEEL INDUCTION CHAFERS

- Made of high quality stainless steel 201 or 304
- With the mirror polishing
- Suitable for induction hobs, fuel heating or electric heating
- Hydraulic hinge with glass windows lid.
- Lids close without any noise can keep the atmosphere in dining area
- Fitted with the cutlery holder
- Frame is removable so that you can prepare your dining area fixable.
- The handle finished with smooth polishing, natural design on the shape of handle to provide an easy grip

S.S.

code	CBM	capacity	mm
430601	0.057	6L	520x455x210
430602	0102	6L	520x455x355



430602





430701

S.S.

**STAINLESS STEEL INDUCTION CHAFING DISH**

code	CBM	capacity	mm
430701	0.043	6L	455x410x210



430602

S.S.

**STAINLESS STEEL INDUCTION CHAFING DISH**

code	CBM	capacity	mm
430702	0.092	6L	455x410x355



**STAINLESS STEEL INDUCTION CHAFING DISH**

- Fitted with visual Glass top lids feature clear windows :
- Allow customers to view the contents without opening the lid.
- Help prevents heat loss from opening and closing the cover regularly to see what's inside.

S.S.

code	CBM	capacity	mm
430801	0.100	9L	675x450x355
430802	0.064	9L	675x450x210



-GN 1/1 SIZE chafing dish



-Stainless steel frame



-Fuel holder



**STAINLESS STEEL INDUCTION CHAFING DISH**

- Fitted with visual Glass top lids feature clear windows :
- Allow customers to view the contents without opening the lid.
- Help prevents heat loss from opening and closing
- the cover regularly to see what's inside.

S.S.

code	CBM	capacity	mm
430601	0.078	6L	530x450xH323



**ELECTRICAL INDUCTION CHAFING DISH**

- Material: stainless steel 201
- Food pan: SS201,0.8mm thickness
- Water pan:SS201,1.0mm
- Cover:SS201,1.0mm
- Heating elements to keep the hot food hot
- N.W. : 8.3KGS ,G.W. : 9.7KGS
- 230V/50Hz/60Hz,400W, 110V/60Hz/400W

S.S.

code	CBM	capacity	mm
430604	0.058	6L	490x410xH220

**ELECTRICAL INDUCTION CHAFING DISH**

- Fitted with visual Glass top lids feature clear windows :
- Allow customers to view the contents without opening the lid.
- Help prevents heat loss from opening and closing
- the cover regularly to see what's inside.

S.S.

code	CBM	capacity	mm
430604	0.058	6L	490x410xH220







## STAINLESS STEEL INDUCTION CHAFING DISH

- Material: stainless steel 201
- Glass top lid for viewing inside food without opening it  
Help to reduce the hot loss
- Food pan: SS201,0.8mm thickness
- Water pan:SS201,1.0mm
- Cover:SS201,1.0mm
- Heating elements to keep the hot food hot
- Suitable for 1pcs GN 1/1x65mm , 2pcs GN 1/2x65mm  
or 3pcs GN 1/3x65 food pans
- N.W. : 10.4KGS ,G.W. : 12.2KGS
- 230V/50Hz/60Hz,400W, 110V/60Hz/400W

S.S.

code	CBM	capacity	mm
430803	0.069	9L	550x420xH220



## ELECTRICAL INDUCTION CHAFING DISH

- Material: stainless steel 201
- Glass top lid for viewing inside food without opening it  
Help to reduce the hot loss
- Food pan: SS201,0.8mm thickness
- Water pan:SS201,1.0mm
- Cover:SS201,1.0mm
- Heating elements to keep the hot food hot
- Suitable for 1pcs GN 1/1x65mm , 2pcs GN 1/2x65mm  
or 3pcs GN 1/3x65 food pans
- With cutlery holder
- Machine with the heating element, digital control the  
temperature felexible

S.S.

code	CBM	capacity	w	mm
430804	0.088	9L	600	550x420xH270



S.S.

## STAINLESS STEEL INDUCTION CHAFING DISH

code	CBM	capacity	mm
430605	0.074	6L	490x410xH270



S.S.

## ELECTRICAL INDUCTION CHAFING DISH

code	CBM	capacity	mm
430705	0.061	6L	420x380xH270

- With 1pcs GN pan 2/3x65mm



## STAINLESS STEEL ECONOMY CHAFERS

-Material details and thickness:

Water pan: SS201, 0.5mm thickness

Food pan: SS201, 0.5mm thickness

Cover: SS201, 0.5 mm thickness

Frame: SS18/0, 1.8 mm thickness

Fuel Holder: SS18/0, 0.5 mm thickness

-Stable frame

-Fitted with lift-off lid and the hooks on the frame for placing the lid

-Product details :

1pcs S/S cover, 1pcs 1/1x65mm GN pan , 1pcs water pan,

1pcs frame, 2pcs fuel holder

-The handle with 2 style: one is full stainless steel ,  
other is with the plastic

S.S.

code	CBM	capacity	mm	remark
430301	0.054	9.0L	600x350xH320	1pcs GN 1/1
430302	0.054	8.0L	600x350x H320	2pcs GN 1/2
430303	0.054	7.5L	600x350xH320	3pcs GN 1/3



X 1



X 2



X 3



-Electrolysis treatment  
surface, more beautiful



-Fully polishing on the  
fuel holder tray, smooth edge  
without any burs



-Fuel holder



## STAINLESS STEEL ECONOMY CHAFERS

S.S.

code	CBM	capacity	mm	remark
430401	0.054	9.0L	600x350xH320	1pcs GN 1/1
430402	0.054	8.0L	600x350x H320	2pcs GN 1/2
430403	0.054	7.5L	600x350xH320	3pcs GN 1/3



BUY IT AT LESSER PRICES





### 833# ECONOMIC CHAFING DISH

- Water pan: SS201,0.5mm thickness
- Food pan: SS201,0.5mm thickness
- Cover: SS201,0.5mm thickness
- Frame: SS18/0,1.5mm thickness
- Fuel Holder: SS18/0,0.5mm thickness

S.S.

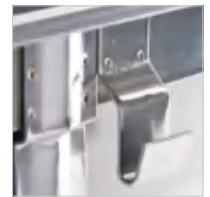
code	CBM	capacity	mm	remark
430101	0.054	9.0L	600x370xH320	1pcs GN 1/1
430102	0.054	8.0L	600x370xH320	2pcs GN 1/2
430103	0.054	7.5L	600x370xH320	3pcs GN 1/3



-Cover's handle



-Handle of frame



-Hook for hanging the cover



### S833# ECONOMIC STRAIGHT FEET CHAFING DISH

S.S.

code	CBM	capacity	mm	remark
433001	0.059	9.0L	645x355xH320	1pcs GN 1/1
433002	0.059	8.0L	645x355xH320	2pcs GN 1/2
433003	0.059	7.5L	645x355xH320	3pcs GN 1/3

### C833# ECONOMIC CURVING FEET CHAFING DISH

S.S.

code	CBM	capacity	mm	remark
434001	0.059	9.0L	650x355xH320	1pcs GN 1/1
434002	0.059	8.0L	650x355xH320	2pcs GN 1/2
434003	0.059	7.5L	650x355xH320	3pcs GN 1/3





### 533# ECONOMIC FOLDING CHAFING DISH

- Water pan: SS201,0.5mm thickness
- Food pan : SS201,0.5mm thickness
- Cover : SS201,0.5mm thickness
- Frame : SS18/0,2.0mm thickness
- Fuel Holder : SS18/0,0.5mm thickness

S.S.

code	CBM	capacity	mm	remark
430501	0.038	9.0L	580x355xH315	1pcs GN 1/1
430502	0.038	8.0L	580x355xH315	2pcs GN 1/2
430503	0.038	7.5L	580x355xH315	3pcs GN 1/3



432001

### H833# ECONOMIC HINGED LID CHAFING DISH

- Hinged covers give you the look of a lift off unit but without the hassle of having to remove the lid.

S.S.

code	CBM	capacity	mm	remark
432001	0.076	9.0L	640x350xH320	1pcs GN 1/1
432002	0.076	8.0L	645x370xH280	2pcs GN 1/2
432003	0.076	7.5L	645x370xH280	3pcs GN 1/3



### 633# ECONOMIC CHAFING DISH

S.S.

code	CBM	capacity	mm
430201	0.076	9.0L	600x350xH320
430202	0.076	8.0L	600x350xH320
430203	0.076	7.5L	600x350xH320



430201



## HANGING COVER CHAFER

S.S.

code	CBM	mm
430901	0.060	520x435x740



Only soup barrel



## SOUP CHAFING DISH - ONLY SOUP BARREL

-Material : stainless steel 201 or 304 is available  
-A marmite chafer / soup chafer, is commonly used to keep soups, stews, sauces, gravies, hot cereals, and other liquids warm throughout your service.

S.S.

code	CBM	Cap.	mm
431501	0.044	4L	Ø310x240xH330
431503	0.044	7L	Ø310x240xH320
431505	0.044	11L	Ø360x290xH330



soup barrel & water barrel



## SOUP CHAFING DISH - SOUP BARREL & WATER BARREL

-Material : stainless steel 201 or 304 is available  
-A marmite chafer / soup chafer, is commonly used to keep soups, stews, sauces, gravies, hot cereals, and other liquids warm throughout your service.

S.S.

code	CBM	Cap.	mm
431502	0.067	4L	Ø310x240xH330
431504	0.067	7L	Ø310x240xH320
431506	0.067	11L	Ø360x290xH330







### FULL STAINLESS STEEL LID WITH HEATING PLATE

S.S.

code	CBM	capacity	mm
431102	0.067	6.0L	470x470x450
431204	0.085	6.0L	

### GLASS & STAINLESS STEEL LID WITH HEATING PLATE

S.S.

code	CBM	capacity	mm
431101	0.085	9.0L	635x435x440
431202	0.085	9.0L	635x435x440



### FULL STAINLESS STEEL LID WITH HEATING PLATE

S.S.

code	CBM	capacity	mm
431203	0.085	9.0L	635x435x440
431204	0.085	9.0L	635x435x440

### GLASS & STAINLESS STEEL LID WITH HEATING PLATE

S.S.

code	CBM	capacity	mm
431201	0.085	9.0L	635x435x440
431202	0.085	9.0L	635x435x440



431301



431302

431303



### OBLONG SOUP STATION

S.S.

code	CBM	capacity	mm
431301	0.070	2x4L	635x350xH355
431302			ØD200xH200
431303			530x325xH20





## ROUND CHAFING DISH

S.S.

Item No.	Dimension(mm)	Capacity	Meas.(mm)	CBM
431203	420x340x330	4.0L	360x360x260	0.034
431207	420x340x320	3.5L	360x360x240	0.032
431205	430x300x340	7.5L	360x360x280	0.036



## 7.5L ROUND CHAFING DISH

S.S.

code	CBM	capacity	meas.	mm
431501	0.034	4.0L	360x360x260	420x340x330
431502	0.032	3.5L	360x360x240	420x340x320
431503	0.036	7.5L	360x360x280	430x300x340

## 5.5L OVAL CHAFING DISH

S.S.

code	CBM	meas.	mm
431601	0.044	540x325x250	580x300x310



## 4.0L HALF SIZE CHAFING DISH

S.S.

code	CBM	meas.	mm
431701	0.035	440x310x260	430x300x320



## STAINLESS STEEL FOOD WARMER

code	furnaces	mm
431801	two	380x175xH65
431802	three	465x175xH65



## DISPENSERS FOR HOTEL BUFFET AND PARTY

- With ice cylinder cooling, stainless steel ice holder in the center of the dispenser keeps juice cold without watering down the beverage.
- Handle on top makes it easy to lift off the lid to add juice, water, fruit, or sweeteners as needed..
- Removable water dish, easy to clean dripping tray.
- Clear PC / PS barrel for packing the juice, 8L / over 2 Gallons capacity for 1 barrel
- With non-drip tap.
- With the mirror polish stainless steel housing



### STAINLESS STEEL JUICE DISPENSER

PC S.S.

code	CBM	cap.	colour	mm
450102	0.056	8L	All-steel	350×260×H600
450202	0.056	8L	Gold-painted	350×260×H600



Welding base



Stretching base



Domed Lid

The domed lid is both visually appealing and features a knob on the top for staff to quickly and easily remove for refilling.



Drip Free Spout

Complete with a contrasting black finish, this pouring spout is stylish, durable, and won't drip after use.



Recessed Drip Tray

Perfect for hiding any spills, and easily removed for quick clean-ups, the drip tray ensures that your table always looks its best.

BUY IT AT LESSER PRICES







All-steel

## STAINLESS STEEL JUICE DISPENSER PC S.S.

code	CBM	cap.	mm
450302	0.112	16L	560×350×590



Gold-painted

## STAINLESS STEEL JUICE DISPENSER PC S.S.

code	CBM	cap.	mm
450402	0.112	16L	560×350×590



All-steel

## STAINLESS STEEL JUICE DISPENSER PC S.S.

code	CBM	cap.	mm
500502	0.171	24L	860×350×590



Gold-painted

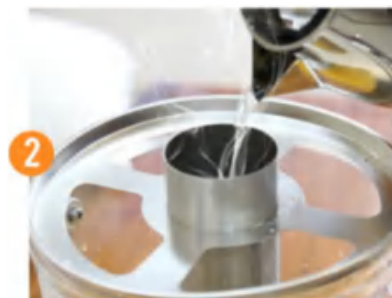
## STAINLESS STEEL JUICE DISPENSER PC S.S.

code	CBM	cap.	mm
450602	0.112	24L	860×350×590

Keep cold  
beverage cold



Keep hot  
drink hot



BUY IT AT LESSER PRICES



**NEW  
ITEM!**



452101

**ECONOMIC JUICE DISPENSER**

S.S.

code	CBM	cap.	mm
452101	0.023	7L	210×240×H465



451502

451501

**ECONOMIC JUICE DISPENSER**

S.S.

code	CBM	cap.	mm
451501	0.050	7L	320×270×H530
451502	0.097	14L	320×535×H530



Color:Silver/Gold-painted

**JUICE DISPENSER**

**NEW  
ITEM!**

- With ice cylinder cooling
- Stainless steel ice holder in the center of the dispenser , keeps juice cold without watering down the beverage.
- Handle on top makes it easy to lift off the lid to add juice, water, ruit, or sweeteners as needed.
- Removable water dish,easy to clean dripping tray.
- Clear PC / PS barrel for packing the juice,8L / over 2 Gallons capacity for 1 barrel
- With non-drip tap.
- With the mirror polish stainless steel housing
- Can operate by one hand, use the glass to press the button and will outflow the drinks

S.S.

code.	CBM	Cap	mm
452201	0.050	8L	350×260×H600
452202	0.097	8L	350×260×H600





## JUICE DISPENSER (WOOD BASE)

Material : Sapelli+SS304+SS201

PC S.S.

code	CBM	cap.	mm
451503	0.050	7L	200x200xH550



451201



450801

## STAINLESS STEEL COFFEE URN

PC S.S.

code	CBM	cap.	mm
451201	0.047	12L	330x330xH530
450801	0.040	13L	260x260xH570



## JUICE DISPENSER

PC S.S.

code	CBM	cap.	mm
451301	0.029	4L	230x230x350
451302	0.041	8L	230x230x510
451303	0.054	12L	230x230x680



## JUICE DISPENSER

- 16 liter containers with quick dispense tap
- With temperature controller
- Containers can be removed to ease cleaning

PC S.S.

code	v	cap.	mm
451503	220	16L	350x490x730



## JUICE DISPENSER

- Two 16 liter containers with quick dispense tap
- With temperature controller
- Containers can be removed to ease cleaning

PC S.S.

code	v	cap.	mm
451503	220	32L	505x505x750





## STAINLESS STEEL HEAT LAMP

- Infrared thermal do not dry your food.
- Keep food fresh and hot longer.
- Keep the food flavor.
- It is necessary and ideal for buffet.
- Heat lamps for food, to ensure that food is not easy to go bad and more flavor.
- The height of lamp holder can be adjustable, better to use in the cafeteria.
- With heating board and without heating board for you choose.



403001



403002

code	CBM	v	mm
403001	0.055	220-240	500x 300 x 700
403002	0.091	220-240	500x 300 x 700



402201



402401



402601



402301



402501



402701

## STAINLESS STEEL HEAT LAMP

code	CBM	v	w	mm
402201	0.287	220-240	1000	750 x 500 x 700
402301	0.287	220-240	1000	750 x 500 x 700
402401	0.406	220-240	1500	1050 x 500 x 700
402501	0.406	220-240	1500	1050 x 500 x 700
402601	0.406	220-240	2000	1050 x 500 x 700
402701	0.406	220-240	2000	1050 x 500 x 700





S/S base



Gold painted & marble base



Gold painted & double lamps

**STAINLESS STEEL HEAT LAMP**

code	CBM	v	w	mm
400101	0.088	220-240	250	φ 300 x 645
400102	0.088	220-240	250	φ 300 x 645
400201	0.088	220-240	500	φ 300 x 645
400202	0.088	220-240	500	φ 300 x 645
400301	0.088	220-240	250	φ 270x645
400302	0.088	220-240	250	φ 270x 645
400401	0.088	220-240	500	φ 270x 645
400402	0.088	220-240	500	φ 270x645



**STAINLESS STEEL CARVING STATION**

code	CBM	mm
400901	0.187	500x450 x645
401001	0.187	500 x450 x645

**STAINLESS STEEL CARVING STATION**

code	CBM	mm
401301	0.187	500 x450 x 645
401301	0.187	500 x 450 x 645





**STAINLESS STEEL CARVING STATION**

code	CBM	mm
401901	0.244	640 x 490 x 740



**STAINLESS STEEL CARVING STATION**

code	CBM	mm
401101	0.187	500 x 450 x 645
401201	0.187	500 x 450 x 645



**STAINLESS STEEL CARVING STATION**

code	CBM	mm
401501	0.330	900x450 x 645
401601	0.330	900x450 x 645



**STAINLESS STEEL CARVING STATION**

code	CBM	mm
401701	0.330	900 x450 x645
401801	0.330	900 x450 x645



Height adjustable

**THERMOS LAMP**

-Lampshade material: Iron

code	mm
402001	φ 290





## GRAIN DISPENSER

PC S.S.

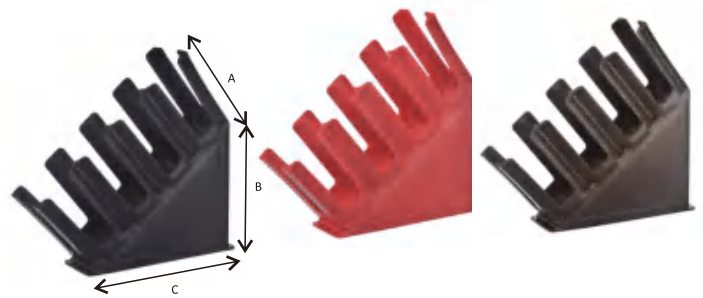
code	CBM	cap.	mm
450401	0.042	10.5L	500×240×H650
450402	0.020	3.5L	200×240×H650
450403	0.028	7L	335×240×H650
450404	0.055	14L	665×240×H650



## TRIANGLE WINE BARREL

PC

code	CBM	capacity	color	mm
605201	0.219	3L	red	170×820
605202	0.219	3L	yellow	170×820
605203	0.219	3L	blue	170×820
605204	0.219	3L	black	170×820
605205	0.153	1.5L	red	170×490
605206	0.153	1.5L	yellow	170×490
605207	0.153	1.5L	blue	170×490
605208	0.153	1.5L	black	170×490



## PLASTIC 4 LATTICES CUP SHELF

PC

code	CBM	color	mm
605701	0.198	black	A=255 B=295 C=390
605702	0.198	red	A=255 B=295 C=390
605703	0.198	green	A=255 B=295 C=390



## GLASS DISPLAY RACK (SINGLE/ DOUBLE)

code	CBM	mm
605501	0.185	320×500
605502	0.167	150×500



## BEAN RESERVIOR

code	CBM	color	mm
605701	0.104	Golden	130×800
605702	0.104	silver	130×800
605703	0.095	silver	130×500





### STAINLESS STEEL FOOD PRESSER

code	CBM	mm
504001	0.054	∅100×295×145



### BARREL RACK

SS

code	CBM	pcs/ctn	mm
604901	0.50	20	410x190x193



### CHAMPAGNE BARREL

SS

code	CBM	thickness	mm
604501 (Silver)	0.46	0.46	∅190×220
604502 (Gold-Painted)	0.46	0.46	∅190×220



604701

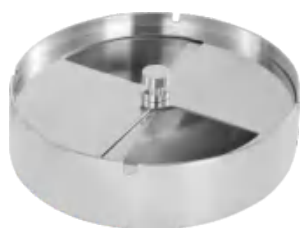


604801

### CHAMPAGNE BARREL PEDESTAL

SS

code	CBM	pcs/ctn	mm
604701	0.46	6	∅190xH750/∅190xH610
604801	0.46	6	∅190xH750/∅190xH610



508101



508102



508103

### ASHTRAY

S.S.

code	CBM	mm
508101	0.015	∅160xH50

### ASHTRAY

S.S.

code	CBM	mm
508102	0.009	∅125xH50

### ASHTRAY

S.S.

code	CBM	mm
508101	0.025	∅102xH10

Suitable for cups: Dia.71mm-79mm  
Dia.81mm-89mm  
Dia.91mm-99mm

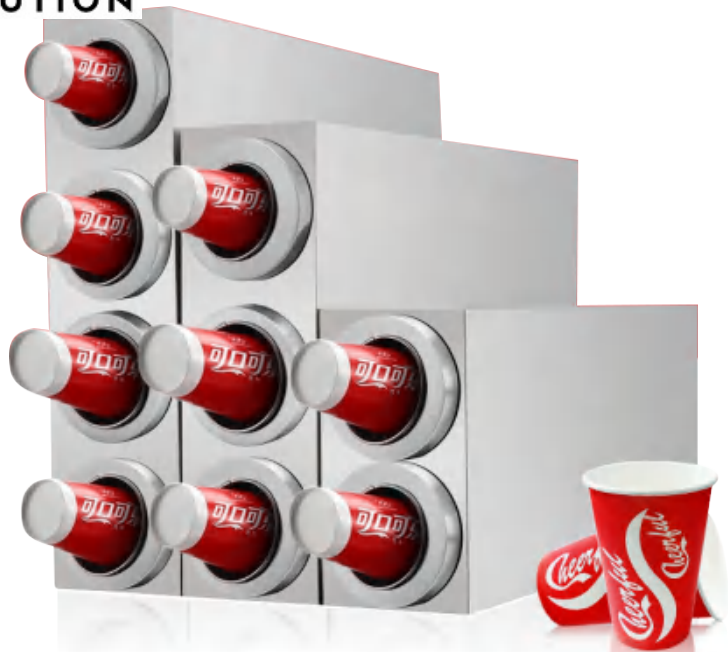


480503 480502 480501

### CUP DISPENSER (1 HOLE)

S.S.

code	mm
480501	140x140x645
480502	140x140x650
480503	140x140x640



480506 480505 480504

### CUP DISPENSER (1 HOLE)

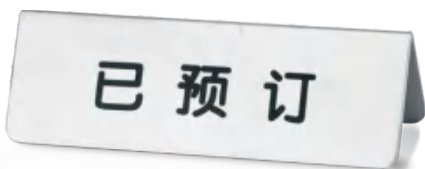
S.S.

code	mm
450401	500x240xH650
450402	200x240xH650
450403	335x240xH650
450404	665x240xH650



### TABLE NUMBER CARD

code	mm
600101	120x50xH40



### TABLE NUMBER CARD

code	mm
600102	120x40xH35

### TABLE NUMBER CARD

code	mm
600103	90x55xH49



### TABLE NUMBER CARD

code	mm
600104	50x50xH40



# STAINLESS STEEL KNIFE & FORK HOLDER

**VISION**  
DISTRIBUTION

## STAINLESS STEEL KNIFE & FORK HOLDER

S.S.

code	CBM	mm
470101	0.016	385×150×H180
470201	0.020	505×150×H180
470301	0.023	630×150×H180



## STAINLESS STEEL KNIFE & FORK HOLDER

S.S.

code	CBM	mm
470801	0.028	385×305×H200



## STAINLESS STEEL KNIFE & FORK HOLDER(4 GRIDS)

S.S.

code	CBM	mm
470401	0.022	265×305×H200



## STAINLESS STEEL KNIFE & FORK HOLDER(UPRIGHT 3 GRIDS)

S.S.

code	CBM	mm
470701	0.022	310×165×H410



## STAINLESS STEEL KNIFE & FORK HOLDER(6 GRIDS)

S.S.

code	CBM	mm
470501	0.031	385×305×H200



## STAINLESS STEEL KNIFE & FORK HOLDER(8 GRIDS)

S.S.

code	CBM	mm
470601	0.031	505×305×H200

BUY IT AT LESSER PRICES



# STAINLESS STEEL GN HOLDER

**VISION**  
DISTRIBUTION



## GN HOLDER (3 GRIDS) S.S.

code	CBM	mm
441501	0.035	575x250x210

## GN HOLDER (4 GRIDS) S.S.

code	CBM	mm
441601	0.046	690x250x210

## GN HOLDER (6 GRIDS) S.S.

code	CBM	mm
441701	0.78	990x250x210



441503



441502



442001

442002

## GN HOLDER (4 GRIDS) S.S.

code	CBM	mm
441504	0.024	425x245x250
441502	0.035	515x250x210
441503	0.045	610x250x210
441505	0.055	825x250x210
441506	0.066	990x250x210

## GN HOLDER (6 GRIDS) S.S.

code	CBM	mm
442002	0.066	760x325x160
442001	0.093	1100x325x160



## GN HOLDER (4 GRIDS) S.S.

code	CBM	mm
441801	0.047	345x425x240



## GN HOLDER (6 GRIDS) S.S.

code	CBM	mm
441901	0.068	515x425x240



## DISPENSERS FOR HOTEL BUFFET AND PARTY

- Material outside:stainless steel304
- Material inside:refrigerant bags
- Keeps temperature below+8°C for at least afer storing in a freezer for at least 4 h
- Ideal for all buffets and outdoors
- suitable for direct contact with food or with GN pan substuion of ice cube,will not get the food wet while melling



### STAINLESS STEEL JUICE DISPENSER

PC S.S.

code	CBM	mm
412801	0.010	530x325x45 1/1
412802	0.005	325x265x45 1/2
412803	0.004	325x176x45 1/3
412804	0.003	265x165x45 1/4
412805	0.007	353x325x45 2/3



1/3



1/2



1/1



412901



412902



412903



412904

### STAINLESS STEEL JUICE DISPENSER

PC S.S.

code	CBM	mm
412901	0.036	550x345xH165
412902	0.052	550x345xH200
412903	0.065	550x345xH235
412904	0.052	550x345xH200





### BUFFET BACK

S.S.

code	CBM	mm
410101	0.047	530x360x450



### BUFFET BACK

S.S.

code	CBM	mm
410201	0.068	530x360x450



### BUFFET BACK

S.S.

code	mm
410202	530x360x450



### BUFFET BACK

S.S.

code	mm
410301	530x350x450



411603



411602

### STAINLESS BUFFET DISPLAY STAND

S.S.

code	mm
411601	300x300x105
411602	400x252x105
411603	300x300x105



411601







# VISION DISTRIBUTION



**DISPLAY STAND WITH SPOONS**

S.S.

code	mm
410505	400x338x105

Product assortment: 16pcs small spoons(92.5x54.2x56.6mm)



**DISPLAY STAND WITH SPOONS**

S.S.

code	mm
410507	400x338x105

Product assortment: 16pcs small spoons(92.5x54.2x56.6mm)



**DISPLAY STAND WITH SPOONS**

S.S.

code	mm
410506	400x338x105

Product assortment: 12pcs big spoons(119x87x65mm)



**DISPLAY STAND WITH SPOONS**

S.S.

code	mm
410504	380x410x91

One 2/3 Melamine GN pan ,depth 65mm included



**DISPLAY STAND WITH SPOONS**

S.S.

code	mm
410502	665x430x105

One 1/1 Melamine GN pan , depth 40mm included





## ACRYLIC FOOD DISPLAY STAND

S.S.

code	mm
412701	500x150x60
412702	500x150x110
412703	500x150x160



## ACRYLIC FOOD DISPLAY STAND

S.S.

code	mm
412704	400x300x60
412705	400x300x110
412706	400x300x160



410901

## STAINLESS STEEL BUFFET COMBINATION DISPLAY STAND

S.S.

code	mm
410202	530x360x450



411001

## STAINLESS STEEL BUFFET COMBINATION DISPLAY STAND

S.S.

code	mm
410301	530x350x450



## STAINLESS STEEL BUFFET COMBINATION DISPLAY STAND

S.S.

code	mm
411611	295x245x140



## STAINLESS STEEL BUFFET COMBINATION DISPLAY STAND

S.S.

code	mm
431102	540x340x115



## STAINLESS STEE COMDIMENT DISPENSER

- Organize and maintain condiments at the concession stand, snack bar, or ice cream parlor-It is perfect for holding hot dog, hamburger, and dessert toppings.
- Housed inside the stainless steel dispenser, you can be confident that the contents are covered and protected from contaminants.
- Rubber feet on the bottom of the dispenser also protect surfaces and prevent slipping.



code	CBM	cap.	mm
606301	0.005	2L	200×130×240
606302	0.014	4L	245×200×240
606303	0.021	6L	365×200×240
606304	0.027	8L	485×260×220



606302



606303



606304

BUY IT AT LESSER PRICES



# STAINLESS STEEL KETTLE/SPORT VACUUM KETTLE

**VISION  
DISTRIBUTION**

## STAINLESS STEEL DELUXE VACUUM JUG

PC S.S.

code	cap.	mm
600101	1.0L	Ø130×(H)215
600102	1.5L	Ø135×(H)250
600103	2.0L	Ø145×(H)280



Food grade  
Silicone Cork



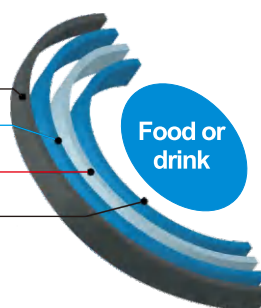
Zinc alloy  
Handle



The outer stainless steel  
copper plating layer  
the vacuum  
the inner layer of stainless steel

### Double Wall Structure

Import Resin paint  
Food grade  
Stainless Body  
Vacuum  
Heat-insulation Layer  
Food grade  
Stainless steel tank



600301



600103



600102



600101

## STRAIGHT POT

S.S.

code	CBM	cap.	mm
600301	0.097	1.0L	Ø88×235
600302	0.124	1.4L	Ø88×295
600303	0.145	1.7L	Ø88×360

BUY IT AT LESSER PRICES

206

