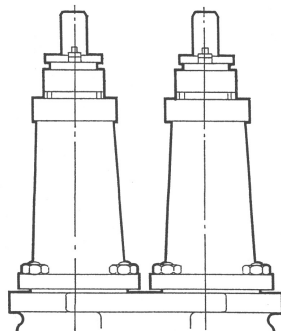
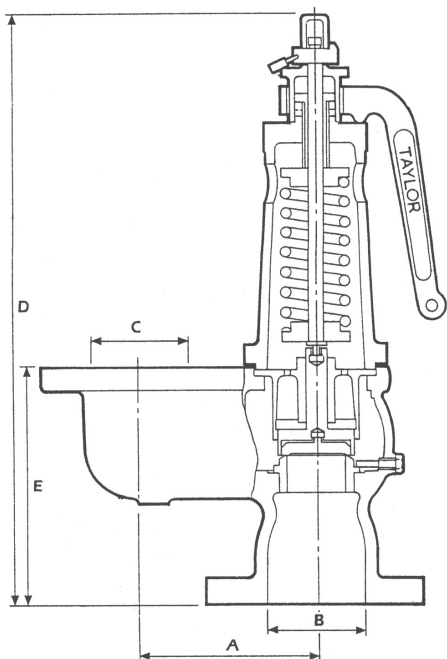




Double Spring High Lift Safety Valve

Series 357



Component	Material
Body	Cast Steel
Seat	Nickel Alloy
Valve Heads	Stainless Steel
Valve Head Holders	Bronze
Spindles	Mang Br/ Stainless Steel
Springs	Alloy Steel

Cast Steel Body, Nickel Alloy Seats, Stainless Steel Valve Heads.
 Steel Springs. Flanged Inlet and Outlet to ANSI.BS. or European Standards
 Consult Blackhall Engineering for Sizing.

**Suitable for pressures up to 24 bar
 and temperatures up to 345°C**

Size		A		B		C		D		E		Weight kg
mm	ins	mm	ins	mm	ins	mm	ins	mm	ins	mm	ins	
40	1½	159	6¼	57	2¼	64	2½	495	19½	216	8½	41
50	2	178	7	76	3	76	3	572	22½	254	10	65
65	2½	203	8	95	3¾	102	4	667	26¼	292	11½	95
80	3	229	9	121	4¾	127	5	756	29¾	305	12	134
90	3½	267	10½	127	5	152	6	819	32¼	337	13¼	191
100	4	267	10½	152	6	152	6	940	37	356	14	194

Fig. 357

For Hot Water Applications a Resilient (P.T.F.E)
 Seal can be supplied for temperatures up to 224°C max.
 Consult Blackhall Engineering for Sizing.

Fig. 357

