

CARDEV® 

4S-350-C8

By-pass Oil Filter

- Input pressure 6-350 Bar
- Flow through filter controlled at 8 litres per minute
- Rugged construction – capable of withstanding the harshest environments e.g. mining, piling, offshore
- Integrated sample points - take a bottle sample or connect one of our ETL ConMon icountOS particle detectors for a real time check on fluid condition (ISO / NAS code and moisture content)

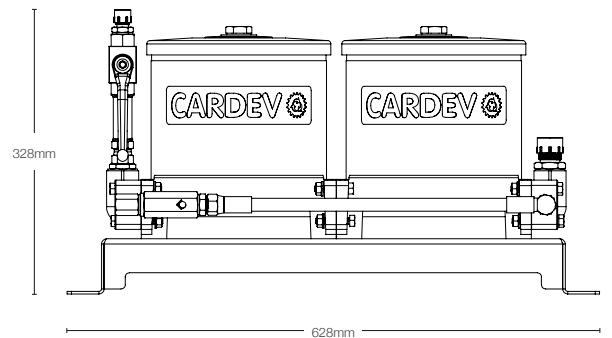
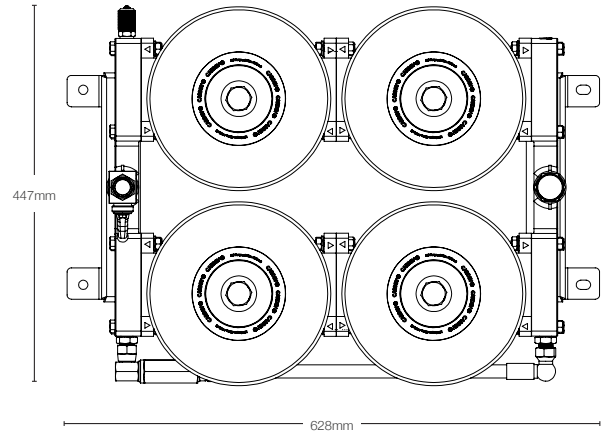
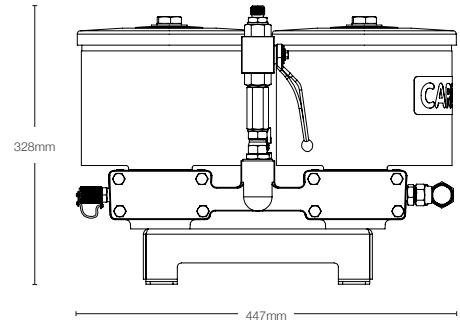


Results

- Oil cleanliness maintained at "better than new*" levels
- Up to 99.9% water removed (both free and dissolved water)
- Removes microparticles & salt, down to 1 micron and smaller
- Increases system reliability
- Prevents system corrosion
- Reduces component wear
- Extends oil life and generates CO₂ savings
- Reduces operating costs



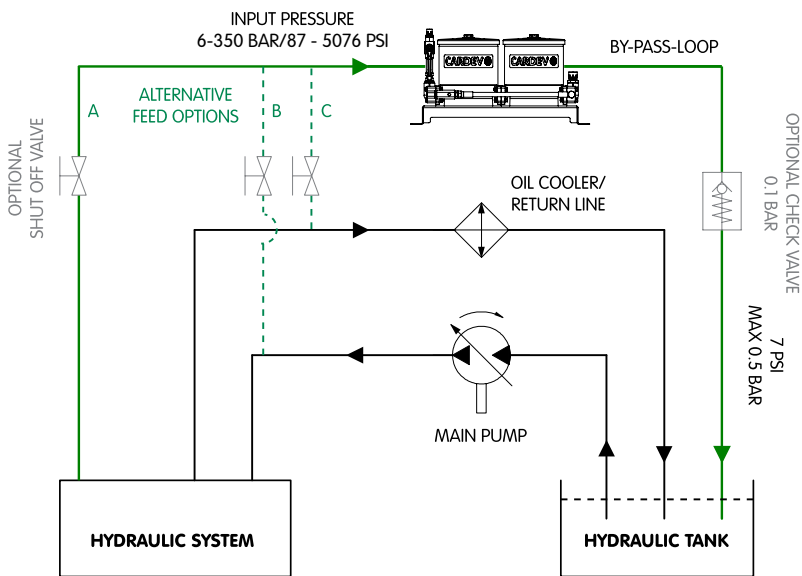
*[ISO 4406: 13/11/08, NAS Class: 2]



Application Examples

- Power generation
- Plastic moulding
- Cement Industry
- Manufacturing plants
- Winches
- Cranes
- A-Frames
- ROV Launch and Recovery Systems - LARS
- Tether Management System - TMS
- HPUs

Installation Example



Recommended Installation	Flow rate through filter (l/h)**	Dimensions (mm)			Connections		Weight (kg)	Filter Element Type	Retention capacity (per set)	
		H	W	L	Inlet	Outlet			≤ 10 kg Dirt	≤ 3.12 Litres of Water
BY-PASS ONLY. Max 350 Bar inlet pressure and 0.5 Bar back pressure. Systems up to 3000 litres	480	328	628	447	3/8" BSP (m)	3/4" BSP (m)	44	4 x SDFC	≤ 10 kg Dirt	≤ 3.12 Litres of Water

**flow rates based on ISO 46 oil @ 40°C

ETL FluidExperts

ETL Fluid Experts Ltd
 Environmental Technologies Group Grimbald Crag Road Knaresborough North Yorkshire HG5 8PY United Kingdom
 T +44 (0)1423 522911 F +44 (0)1423 530043 E sales@etlfe.com

www.etlfluidexperts.com

The specification and photography is for reference only and may be subject to change. ETL Fluid Experts Ltd is part of the Environmental Technologies Group Ltd. All rights reserved.