

# CARDEV®

Product Datasheet

## SDU-H8 By-pass Oil Filter

- Up to 99.9% water removed (both free and dissolved water)
- Input pressure 2-6 Bar
- For systems up to 400 litres



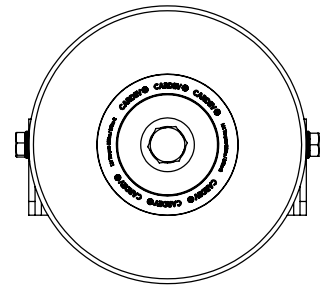
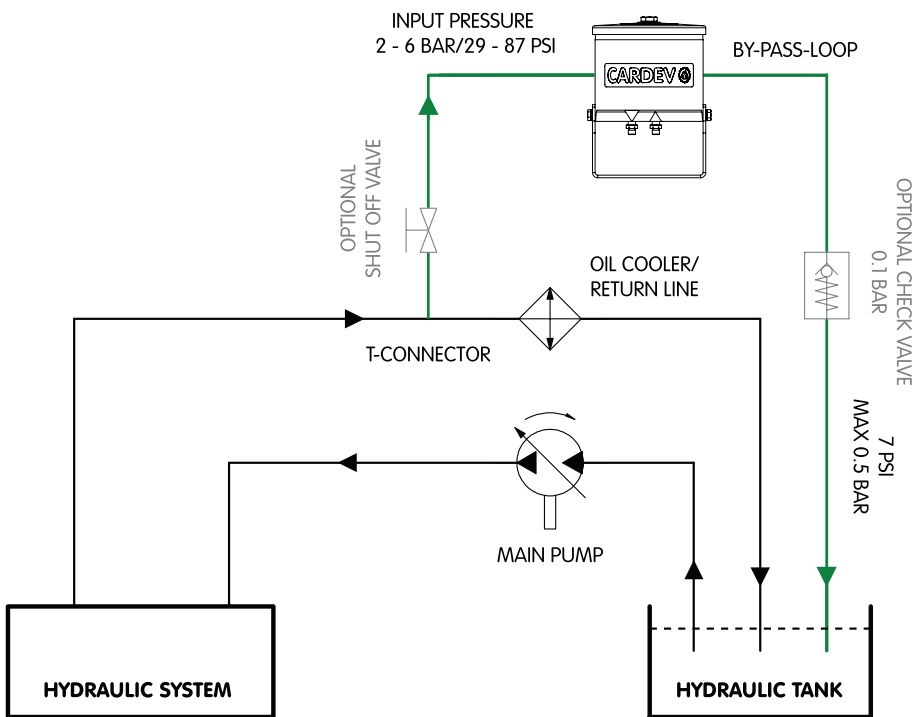
## Benefits

- Removes microparticles including combustion deposits
- Removes free and dissolved water contamination
- Increases system reliability
- Prevents system corrosion
- Reduces component wear
- Extends oil life and generates CO<sub>2</sub> saving
- Reduces operating costs

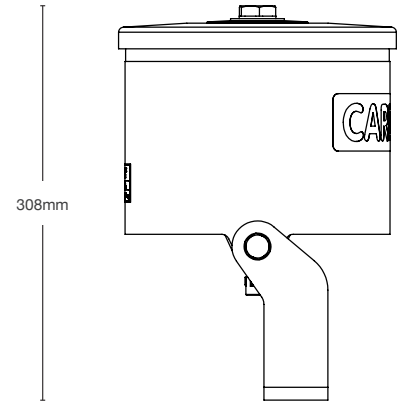
## Application Examples

- Earth moving machines
- Forestry equipment
- Mobile cranes
- Drilling/piling equipment
- Static hydraulic systems

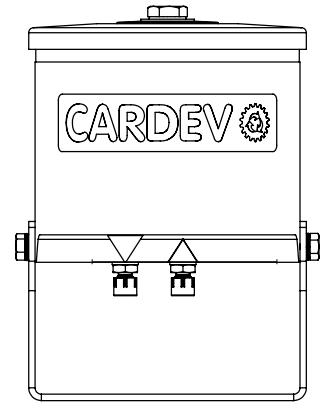
## Installation Example



Ø 217mm



308mm



Recommended installation	Flow Rate (l/h)	Dimensions (mm)			Weight (kg)	Filter Element Type	Retention Capacity (per set)	
		H	D	D			≤ 2.5 kg Dirt (kg)	≤ 0.78 Litres of water
BY-PASS ONLY. Max input pressure 2-6 Bar and 0.5 bar back pressure. Systems up to 400 litres.	120-240 (Max)	308	Ø 217	237	8	Standard fit: 1 x SDFC	≤ 2.5 kg Dirt (kg)	≤ 0.78 Litres of water

**ETL FluidExperts**

ETL Fluid Experts Ltd  
 Environmental Technologies Group Grimbald Crag Road Knaresborough North Yorkshire HG5 8PY United Kingdom  
 T +44 (0)1423 522911 F +44 (0)1423 530043 E sales@etf.com

[www.etfluidexperts.com](http://www.etfluidexperts.com)

The specification and photography is for reference only and may be subject to change.  
 ETL Fluid Experts Ltd is part of the Environmental Technologies Group Ltd. All rights reserved.