

Vol. 1
Issue #3
3rd Qtr
2023



The Galena post

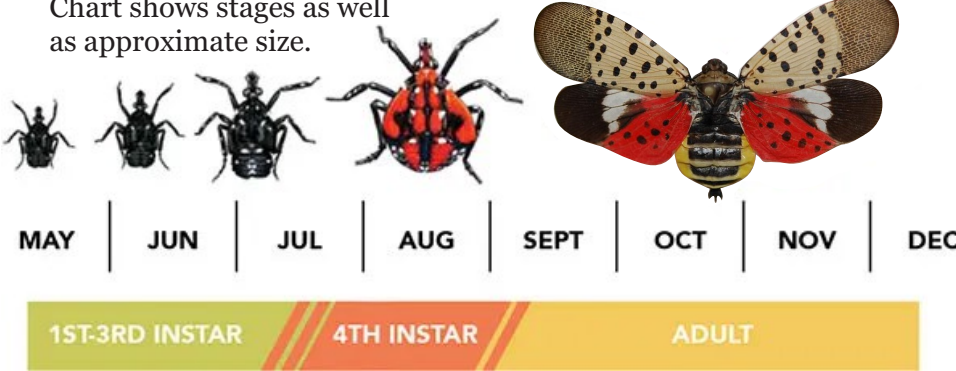


July
August
September

Town Office Hours 9:00 a.m. - 4:00 p.m. Monday-Friday 410-648-5151 www.townofgalena.com

WHAT'S BUGGIN YOU?

Chart shows stages as well as approximate size.



KILL ON SIGHT!!!

The Spotted lanternfly (SLF) is an invasive insect pest that has spread rapidly since its accidental introduction in PA in 2014. While primarily a threat to agricultural crops, it feeds and reproduces on landscape trees and shrubs such as red maple. In areas where an infestation is present, it is not uncommon to find thousands of these bugs feeding on host trees. At these population levels, their feeding can pose significant stress to trees and result in substantial honeydew (a sugary waste product they secrete) production.

Bartlett Tree service started a survey of the Spotted Lantern Fly in Galena with hopes of identifying what does and does not eradicate them. They are holding off on treatments until later in the season when lanternfly adults begin to return to red maples and they are looking for additional participants with red maples in their front yards, that can be used in the study.

NO DOGS

AT GALENA COMMUNITY PARK

We have had numerous complaints about loose dogs at the Community Park, just a reminder to all residents, that dogs are NOT allowed in the park at 105 Sycamore, they are allowed at Gateway park next to the Post office. If there is a dog or animal being a public nuisance, Please call the ASPCA at (410) 778-3648. As a courtesy of other park patrons,

PLEASE CLEAN UP AFTER YOUR PET

WATER METER PITS

Please ensure that your water meter pit is clear from obstructions for ease of Miss Utility Markings.

CONGRATULATIONS to our very own Galena Mayor

Mayor John Carroll was sworn in as the President of the Maryland Municipal League at the thier conference at the end of June.

The Maryland Municipal League uses its collective voice to advocate, empower and protect the interests of our 157 cities and towns and elevates local leadership, delivers impactful solutions for our communities, and builds an inclusive culture for the 2 million Marylanders they serve. www.mdunicipal.org

JUST A REMINDER

Aerial fireworks are illegal in Kent County, MD



If you would like to be an election judge for the Town of Galena, here is your chance. You must be a qualified voter of the town and can not hold or be a candidate for any elective office during the 4 year election board member term. If you would like to be an Election Board Member, please contact the town office at 410.648.5151.



Famous! AYCE Crab Feast

Famous! All -U- Can Eat CRAB FEAST August 12, 2023 2:00 to 5:00 PM Tickets go on sale JULY 1ST First 150 will get in hall seating Price: \$60.00 per person Pre-sale only We do have a \$20.00 Non Crab Eating Price Crabs, Corn on the Cob Hot Dogs, French Fries Hamburgers CASH BAR BEER, WINE MIXED DRINKS ICE TEA AND WATER WILL BE AVAILABLE Email for tickets to galenacrab@gmail.com or Call 443-309-7749 No refunds, No Exceptions!! Tickets Must be Purchased in Advance. No Tickets will be SOLD AT THE DOOR We accept Visa/MC/Discover

Drive-Through BULL ROAST
St. Dennis Church
153 N. Main St. Galena, MD 21635

July 29, 2023
11:00 am - 2:00pm!
LIMITED AVAILABILITY
Advance ticket purchase recommended
Call Jim at 717-575-1235 for tickets or additional information. Dinner Includes: Delicious PIT roasted beef, 1/2 a fried chicken, 2 locally-grown ears of corn o.t.c. Homemade potato salad 2 rolls with butter Bottle of water \$25 per meal Curbside Service Baked Items also available for sale



Kent County Fair
21349 Tolchester Beach Road
Chestertown, MD 21620
July 19th, 20th, 21st & 22nd, 2023

Exciting news this year as the Kent County Fair adds an extra day to the fun! Full schedule on kentcountyfair.org

2023 Design Winner: Bailei Caldeira Junior 4-H Member Fuzzy Tails & Shiny Scales 4-H

The Galena Open Air Markets
2023 MARKETS
10AM-3PM
AUGUST 5TH
SEPTEMBER 2ND
OCTOBER 7TH
FREE TO ATTEND & PARK!
RAINDATE: NEXT DAY (SUNDAY)

OLIVET UNITED METHODIST CHURCH
115 S. Main St. Galena
CRUISING WITH CHRIST

7th Annual Car Show
August 19, 2023

Registration: 9am
Voting: 11am-12pm
Awards: 1pm
Car entries \$20
Silent Auction
Music
Give-aways
Food
For more info 410.708.7855



DOGWOOD FESTIVAL SHIRTS FOR SALE



2023 Dogwood Festival shirts are for sale at the Town Hall, for \$28. S-XXL The Town Hall is open 9am-4pm Monday - Friday.

LIONS INTERNATIONAL Bicycle Tour of Kent County Ride to See August 12, 2023

Register Online using: Active.com or BikeReg.com by August 10, 2023. Register by Mail using this form: 2023 Registration Form Second best choice but must be in our hands before August 4, 2023. Mail this completed form along with a check or money order payable to Galena Lions Charities. Please include a registration fee of \$40 per rider.

Galena Lions Charities, PO Box 141, Galena, MD 21635 Register at the site on day of Ride: On site registration fee on August 12 will be \$55 per rider. Cash or Checks made payable to Galena Lions Charities are acceptable. Currently we are not able to accept credit cards.

These registrations are often best for the participants but make the planning of the event difficult. So this is our third choice, but they are still more than welcome. Quicker registration is possible if you print out your form in advance and bring it with you to the registration site.

TOWN HALL IS HIRING

Town is seeking a full-time maintenance worker for approximately 35 hours a week who would work under the supervision of the Maintenance Coordinator. Salary range of \$38,000.00-\$40,000.00. Candidate would assist with maintenance, basic repairs of town buildings, streets, equipment, and grounds. Application and full job description are available online at www.townofgalena.com. Send application and resume by email to csmith@townofgalena.com or mail to: Town of Galena 101 S. Main St. Galena, MD 21635

Resume deadline: Friday, July 21, 2023. EOE/AA/ADA.

100 YEARS AGO 1923

Town commissioners of Galena are arranging to install a new lighting system that will furnish the town with ample light for all purposes.

Evening Journal, August 1923; Wilm. DE.

GALENA

Andrew Vansant and family of Seaford, visited Mrs. Vansant's mother, Mrs. John Boyd, last week.

Miss Annie Hayes spent the 4th with her sister, Mrs. Wm. Petticord, of Locust Grove.

Several persons around here have entered the Transcript subscription contest.

Mrs. Victor Stradley with her two grandchildren, Anna and Price Stradley, is visiting her daughter at Trappe, Md. Mr. Stradley was there also, but returned home on Sunday.

Mrs. Annie Deshane is visiting Mrs. Robert Ferguson, of Cecil.

Mrs. Thomas Cruickshank, who has been quite sick is much better at this writing.

On Wednesday evening of last week the stork presented a fine little girl to Mr. and Mrs. Norman Ford, and also a fine little daughter to Mr. and Mrs. Herbert Ford.

Kent News, August 1923

TOURNAMENT

The Galena Cornet Band, of Cecilton, Md., invites all Knights of Delaware and the Eastern Shore of Maryland to contest in

A Grand Tournament

AT GALENA, MD.,

Thursday, Sep. 15th, '98.

for the following Prizes:

- FIRST—\$25.00 in Gold.
- SECOND—One Set of Harness.
- THIRD—One Fine Lap Robe.

Application for entrance will be received until September 3d.

FEE FOR ENTRANCE \$2.50.

Those desiring to enter will please notify our secretary without delay, as our list of Knights will necessarily have to be limited.

CONDITIONS:

- COURSE—1 1/2 Yards.
- RINGS—1 1/4 Inches.
- THE SLINGS—1 1/4 Inches.
- TIME—11 Seconds.
- SPEAR—8 1/2 Feet.

ROBERT T. DEWEY.

The Middletown Transcript 1898

Lightning struck a large stack of wheat on Wednesday morning last on the farm of Rev. A. P. Prettyman, near Galena, and completely destroyed it. It had not been insured. The other stacks were saved by the help of neighbors.

The Smyrna Times, July 24, 1912

Social Cotillion Party,

Donated by Galena Funeral Home



WRITE THE ADDRESS ON THIS SIDE—THE MESSAGE ON THE OTHER

*Mrs John Remington & Company
Galena
Md*

The pleasure of your company is requested to attend a

Social Cotillion Party,

AT TOWN HALL, GALENA, M.D.,

FRIDAY EVENING, SEPTEMBER 1st, 1876.

COMMITTEE:

FRANK P. COCHRAN,

JAS E. WOODALL,

RICH'D J FOARD,

WM H. PENNINGTON, THOS H. HORSEY.

Valuable MILL PROPERTY At Public Sale.

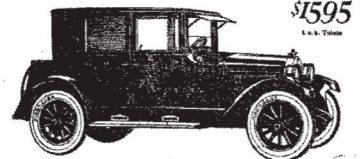
AS Trustee, the undersigned, on WEDNESDAY, the 20th of August, 1862, at the Hotel of Mr. John Pennington, Galena, Kent co., Md., at 10 o'clock, A. M., will sell at Public Sale to the highest bidder
Cecil Whig, Aug. 23, 1862

Maryland Items.

Jervis Dunn drove a horse from Wilmington to Galena, Md., about 75 miles, and it died from the effects. He paid a Wilmington liveryman \$160 as a recompense.

The Smyrna Times, Sept. 23, 1891

WILLYS-KNIGHT Coupe-Sedan



A Meteoric Success

The Willys-Knight Coupe-Sedan has leaped to a popularity previously unknown among fine closed cars. For it is living proof that complete equipment and luxurious appointments can be combined with faultless mechanical performance at a very reasonable price. Having doors both front and rear, the Willys-Knight Coupe-Sedan provides easy entrance and exit for all five passengers without climbing over seats.

See the Willys-Knight advertisements in The Saturday Evening Post

McCAULEY & FERGUSON
Galena, Maryland.

THE ENGINE IMPROVES WITH USE
Kent News, Aug, 1923

GALENA COMMUNITY PARK

Earlier this year, the Town of Galena was proud to complete a small-scale stormwater retrofit in partnership with ShoreRivers at Galena Park, where their team designed five bioswales and three new parking lot "islands" (planted with native shade trees to help cool adjacent pavement)! Take a look at the diagram below to see how these upgrades will help capture and treat stormwater runoff and reduce nuisance flooding AND provide pollution reductions that benefit our rivers.

Funding for this beneficial community project was provided by the Chesapeake Bay Trust and Maryland Department of Natural Resources.



WE HAVE GRILLS!!

The Galena Community Park Enhancement project has been completed! The project includes the installation of five (5) park benches and two (2) charcoal grills, one being ADA accessible. Being able to offer more leisure areas for people to rest and providing grills is a benefit to our community. With the recent completion of a public restroom facility, public Wi-Fi, solar charging stations and the pavilion we have noted an increase in usage and anticipate the addition of benches and charcoal grills will also contribute to increased utilization of our park.

The metal trash cans attached to the grills are NOT FOR TRASH, they are for coals only.

Please use the grills responsibly and only as intended.



Just as a reminder, the park is under 24 hour surveillance.

Town Parks, Recreation & Tree Committee

- The Park and Tree Committee meets monthly on the third Tuesday at 6pm.
- The town parks and restroom are open from dawn until dusk.
- The pavilion at the community park is available for rental at a reasonable fee, if you are interested in renting it a rental form can be found on our website at townofgalena.com under the "Government" page or call the town office.

Help keep our parks and town clean, deposit all litter in trash containers.

Trash and Recycling containers are provided at the park for park patrons only, please no disposal of trash from businesses.

Trash and Recycling

JUST A REMINDER THAT ON HOLIDAY WEEKENDS, THE TRASH PICKUP WILL BE A DAY LATE.

Trash is picked up every Wednesday and recycling is picked up every other Wednesday.

Recycling Pick-up Dates:

July 12 & 26 Oct. 4 & 18

Aug 9 & 23 Nov. 1, 15, 29

Sept. 6 & 20 Dec. 6 & 20



RECYCLED ITEMS

Acceptable items should be placed loose, empty, clean and dry into a curbside recycling cart.

PAPER - Magazines, catalogs, junk mail, envelopes, office paper, newspapers, paperback books, paper bags, phone books, wrapping paper (no foil paper), notebook paper

CARDBOARD BOXES - Cereal boxes, snack food boxes, paper towel rolls, toilet paper rolls, paper egg cartons, paperboard envelopes

CORRUGATED BOXES - Corrugated shipping boxes and packaging

CARTONS - (with caps on) - Milk cartons, juice cartons, chicken broth cartons, coconut water cartons, juice boxes, coffee creamer, egg beaters

PLASTIC CONTAINERS - (with caps/lids on. No need to crush) - Narrow neck bottles (water, juice, and soda bottle; shampoo and mouthwash bottle; detergent bottle; bleach bottle), plastic tubs (yogurt container, butter container), plastic jugs (milk jug), plastic clamshell container (strawberry container)

CANS - (no need to crush) - Aluminum beverage cans, "soup" cans, pet food cans

GLASS BOTTLES AND JARS - (Remove tops from glass jars and recycle both items) - Glass bottles (any color), beer bottles, wine bottles, soda bottles, glass jars

NON RECYCLE ITEMS

Anything not on the list of recycled items should be thrown in the trash bin