

## Happy Fall! 2021

With COVID still being prevalent in our community, The Social & Learning Institute was excited to begin our 2021-2022 program year on September 7th! We would like to say a special thank you to our community, students, caregivers, staff, volunteers, donors and grantors for continued support through all the changes we have had to endure since the beginning of the pandemic. It is because of your support that we are able to stay focused on our Mission and commitment to provide adults with intellectual disabilities a safe place to socialize and learn together!

Over the last year we have been humbled to see our students overcome all the obstacles that come along with the COVID pandemic, and they have done so with smiles on their faces. Through the pandemic the students (and staff) have learned quite a bit about health, germs, and how to make small changes to live a healthier lifestyle. Students enjoy yoga, cardio drumming as well as Zumba and Walking Off The Pounds videos! Other favorites of students are going to Reins of Life to see the horses, Art with the Lubeznik Center and trips to the Dunes Learning Center!

left to right:  
Trish Dittmer, Amy Armstrong,  
Abby Sellers



Assistant Program  
Coordinator Abby Sellers  
& Executive Director  
Abby Hinsch

This year we are super excited to welcome Abby Sellers to our SLI team as our newest Assistant Program Coordinator! Miss Abby has worked with individuals with developmental disabilities for several years, she was even our substitute program coordinator and a volunteer here at SLI. Miss Abby brings fresh ideas and an unstoppable energy to our program!

With Abby Sellers in the classroom, Abby Hinsch took on the position of Executive Director. Even though Abby H. misses the classroom, she cannot wait to see what this new position has in store. Even though Director Abby is in her office most days, she still finds time to sneak into the classroom and teach American Sign Language to the students, and every once in a while she is seen wandering into the classroom wearing a hot dog hat or getting a pie in the face to make the students and smile.



### VIRTUAL SLI ANNUAL MEETING

Mark your calendar for 6:00PM on Monday, October 18th. The SLI Annual Meeting will take place virtually via Zoom.

To receive link to Zoom meeting contact:  
Abby Hinsch, Executive Director  
[ahinsch@socialandlearning.org](mailto:ahinsch@socialandlearning.org)  
or visit: [socialandlearning.org](http://socialandlearning.org)

### UPCOMING EVENTS...

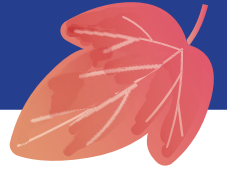
Visit [socialandlearning.org/events](http://socialandlearning.org/events) for more details and opportunities to give.

**October 1<sup>st</sup>-21<sup>st</sup>** Butter Braid & Joyful Traditions Fundraiser

**November 2<sup>nd</sup>** Holly's Gives Back to SLI

**November 30<sup>th</sup>** #givingtuesday on Facebook starts

The Social & Learning Institute is grateful to its students, caregivers, staff, and supporters for their patience and understanding during this unprecedented time. The Institute is committed to continuing to adapt its program environment to comply with all health and safety guidelines.



## HEALTH PROMOTION THROUGH THE ARTS

Students love art with Teacher Michelle from the Lubeznik Center

## LITTLE FREE LIBRARY & KINDNESS ROCKS GARDEN!

In honor of International Literacy Day Sept. 8th, we opened our Social & Learning Little Free Library! We are so excited to share our love of reading with the community, and we hope that our kindness rocks bring as much joy to all that find them as they have brought to us!



## DUNES LEARNING CENTER

Students love learning new and exciting things with the Dunes Crew!



## HEALTH & WELLNESS

Students continue to learn about maintaining a healthy lifestyle through exercise and health lessons!



## WAYS TO GIVE

Nearly 40% of our sustaining revenue was generated by individual contributions and Key Sustainability Program membership.

### Key Sustainability Program

We invite you to become a member of our community through our Key Sustainability Program. Individuals and organizations who participate in this program are the backbone of our organization and play key roles in shaping our future.

By becoming a member, you're giving someone a sense of community, access to fundamental education, and a meaningful life that might otherwise have gone unrealized.

Visit [socialandlearning.org/giving](https://socialandlearning.org/giving) for full program details or contact SLI by email [contact@socialandlearning.org](mailto:contact@socialandlearning.org) or phone 219-879-2200. A membership contribution form is enclosed.

### Digital Giving Options

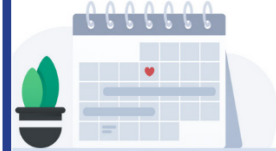
Donate on Facebook:  
The Social & Learning Institute

Text: UrKey to 26989



Visit [socialandlearning.org/giving](https://socialandlearning.org/giving) to explore secure online giving options

**Support Monthly**  
Turn that \$50 into a smaller monthly gift



One-Time Donation

**Give Change**  
Donate your "Round-Up" Spare Change



# Shaping Our Future Starts with YOU

## Key Sustainability Program

At The Social and Learning Institute, our mission is rooted in the idea that all people with intellectual and developmental disabilities are defined by their own strengths and abilities—not by their disability—and that each person deserves every opportunity to thrive and participate fully in society.

Our programming is designed to expand minds, teach essential life skills, and help individuals recognize their worth through a structured balance of socialization and learning activities.

We invite you to become a member of our community through our Key Sustainability Program. For more than 40 years, members have enabled us to fulfill our financial obligations and focus on the further growth and development of programs to best serve the needs, and enrich the lives of our students, their families and caregivers.

By becoming a member, you will provide the adults with intellectual and developmental disabilities we serve ongoing opportunities for supported socialization and life-long learning.

*The Social & Learning Institute is a 501(c)3 tax-exempt non-profit organization. Your donation is tax deductible. Members can be assured that donations to the Key Sustainability Program will be spent carefully to enhance lifelong learning and enrich the lives of the individuals served.*



## The Social & Learning Institute

Where Socializing & Learning are Key to Growth



### THE FOUNDERS CLUB

\$40/MONTH - \$480 ANNUAL

Donors at this level are celebrated for their dedication to continue and sustain the mission of the original founders.

Founders Club members support the Institute with a gift of \$40 per month/\$480 annually.



### THE KEY CLUB

\$20/MONTH - \$240 ANNUAL

Donors at this level are “key” to the sustainability and growth of the Institute.

Key Club members support the Institute with a gift of \$20 per month/\$240 annually.



### THE FRIENDS CLUB

\$10+ ANNUAL

We are grateful for gifts of all sizes which allow us to continue to offer new experiences for adults with intellectual disabilities within our community.

Friends Club members support the Institute with a gift of \$10 or more annually.

Thank You! You are the key to our sustainability and growth!

Secure credit card donations may be made online at [socialandlearning.org](http://socialandlearning.org) or you may complete and return the membership form below.



### KEY SUSTAINABILITY PROGRAM

 **FOUNDERS CLUB**  
\$40/MONTH - \$480 ANNUAL

 **KEY CLUB**  
\$20/MONTH - \$240 ANNUAL

 **FRIENDS CLUB**  
\$10+

AMOUNT ENCLOSED:

PLEASE PROVIDE NAME AS YOU WOULD LIKE TO BE RECOGNIZED ON GIFT ACKNOWLEDGMENT & DONOR LIST.

I/We prefer our giving to be ANONYMOUS and request that my/our name(s) NOT be included on donor lists published by the Institute.

Name \_\_\_\_\_

Address \_\_\_\_\_ PO Box \_\_\_\_\_

City \_\_\_\_\_ State \_\_\_\_\_ Zip \_\_\_\_\_

Telephone \_\_\_\_\_ Email \_\_\_\_\_

I am interested in leaving a gift of property, securities, or other financial assets to The Social & Learning Institute.

I am interested in sponsoring a student by providing scholarship funds to The Social & Learning Institute.

I am interested in volunteer opportunities with The Social & Learning Institute.





201 East Garfield Street  
Michigan City, Indiana 46360

NON-PROFIT  
ORGANIZATION  
US POSTAGE  
PAID  
PERMIT NO. 69

RETURN SERVICE REQUESTED

**Open me for exciting news about  
The Social & Learning Institute!**

