


# Roofing Products now in stock



Speak to your local branch manager for more info

For bulk pricing

 0141 946 4455 or  
 sales@lksupplies.co.uk

  
**CROMAR**  
Building Products



### Protect1F®.

A non breathable roof membrane.

A high performance non breathable roof underslating which gives major benefits over plastic and traditional 1F bitumen based underslating felt.

Prod. Code	Colour	Size
TPF/45	Dark Grey	1m x 45m



### Vent3®.

High performance breathable underlay.

A high performance breathable membrane ideal for cold and warm roof application.

Prod. Code	Colour	Size
TV3/50	Blue	1m x 50m



### Vent3®AIR

Excellent air permeability, vapour resistance and water tightness properties.

Prod. Code	Colour	Size
TV3/50AIR	Orange	1m x 50m

# CROMAR<sup>®</sup>

## Building Products



### ProRidge.

Universal kit.

Suitable for ridge and hip application, works with most ridge tiles - the quicker and easier alternative to mortar.

Prod. Code	Size
URK/6M	6m



### Cromaverge.

Premium universal dry verge.

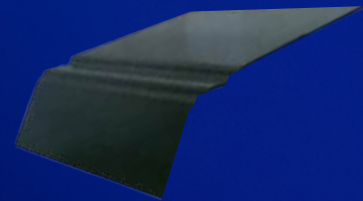
A premium, universal dry verge system, no need for separate left or right hand verges anymore. With this quick fit design there is no need for using mortar, and roof tiles are held firm even in strong winds.

### Roofing accessories

- Push in Soffit Vents - Various colours
- Polymer Headed Nails - 40mm Various colours
- Polymer Headed Pins - 40mm Various colours



Prod. Title	Prod. Code	Colour
Cromaverge	UR/CROMVERGG	Grey
Cromaverge	UR/CROMVERGB	Brown
Cromaverge	UR/CROMVERGT	Terracotta
Cromaverge	UR/CROMVERGBL	Black



### Underlay Support Tray

A support tray to ensure any underlay is not carried into the gutter, and prevents water ponding behind the fascia. Therefore reducing long term maintenance to the eaves of a building.

Prod. Code	Size
IUST/1B	235mm x 1.5m

### Roof & Gutter Sealant.

Rubberised oil based sealant.

A roof and gutter sealant specifically designed for repairing leaking gutters, downpipes and flashing.

Also suitable for bedding roofing sheets and felts. Excellent adhesion to most surfaces.

Prod. Code	Colour	Size
MRG/031	Black	310ml



### Lead Sealant.

Lead sheet & flashing sealant.

A low modulus, neutral cure, fast curing lead sealant, specifically designed for use with metals such as lead, galvanised steel etc. Ideal for stopping weather ingress, tile lift and noise.

The perfect product for sealing rooflights, conservatories, soffits, glass houses, industrial roofing systems, lead flashing and as an alternative to mortaring lead flashing.

Prod. Code	Colour	Size
MLED-MATE/031	Grey	300ml



### Leadax Original

The New Lead.

Since its launch in 2018 Leadax has grown to be one of the most popular lead alternatives on the market. With numerous benefits over Lead, and other lead replacements, it is the obvious choice.

Prod. Code	Colour	Size
KLD/150	Grey	150mm



### Lead Code 4

Perfect for sealing gaps around doors and windows to protect your property against rainwater, lead flashing rolls are strong and easy to install, surpassing the performance of other building materials when the rules of good practice are used. Flexible and easy-to-shape option, designed to last even in changing weather conditions.

Prod. Code	Size
QC4379	600mm x 3m



### Flashing Tape

Self adhesive lead look tape.

High quality, self adhesive bitumen coated, heavy duty, lead look finish tape for trade use. Available in a wide range of widths in 10mtr long rolls.

Prod. Code	Size
KFB/50N	50mm x 10m
KFB/100/N	100mm x 10m
KFB/150	150mm x 10m
KFB/225	225mm x 10m



### Roofing Felt Adhesive.

Superior bond technology.

Cold applied, bituminous adhesive for bonding successive layers of roofing felt.

Prod. Code	Size
AFA/501	5ltr



### Black Bitumen Paint.

Waterproofing protection.

A general purpose paint for waterproofing and weather protection of steelwork and concrete.

Prod. Code	Size
ABP/501	5ltr



### Cromapol.

Acrylic Roof Coating.

A one coat, instant waterproof coating ideal for emergency repairs. With the ability to use in damp conditions it provides a flexible, seamless, reinforced membrane that gives instant protection.

Prod. Code	Colour	Size
APOL/5	Mid Grey	5Kg
APOLB/5F	Black	5Kg

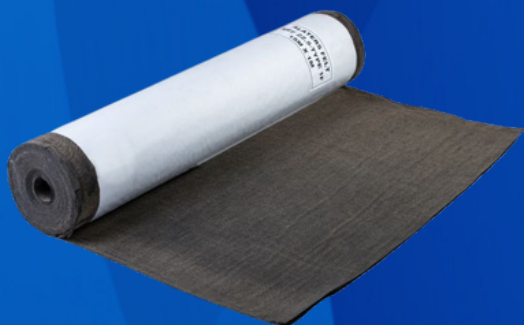


### Acrypol+.

Acrylic Roof Coating.

Acrypol+ is a total roof coating waterproof system developed to refurbish failed industrial, commercial or domestic flat roofs and is also ideal for general property maintenance as well as patch repairs.

Prod. Code	Colour	Size
ACRYPOL/5	Grey	5Kg
ACRY/FSOLB/5	Black	5Kg



## 1F Reinforced Slaters Felt

TRADITIONAL UNDERLAY ON A PITCHED ROOF SYSTEM

Used as a secondary waterproofing membrane under slates or tiles on a pitched roof. Hessian backed to give extra strength. To be used in accordance with Eaves Plus

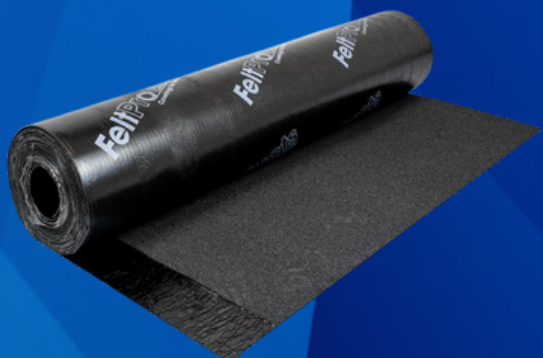
Prod. Code	Size
QC10212	15 x 1 m



## SupaTec SBS Torch-On SBS Sand Finish Underlay

SBS (Styrene - Butadiene - Styrene) - Modified Bitumen  
 Intended Use - Underlay  
 Fixing Method - Torching on / Cold Felt Adhesive  
 Life Expectancy - 10 years +  
 Bottom Finish - Plastic Foil  
 Top Finish - Fine Sand

Prod. Code	Size
QC10216	15m x 1m x 2mm thick



## Torch-On Black Mineral Felt SBS Roofing Cap Sheet

SBS Reinforced Polyester Felt - Ultra Strong  
 Black mineral - Waterproof - Self protected  
 10 year life expectancy  
 Uses and methods:  
 Cap/top sheet - Torching on / cold felt adhesive  
 Ideal for any flat roof

Prod. Code	Size
QC10215	8m x 1m



## Glass Fibre Shed Felt - Charcoal Mineral

Granite grey mineral top side with a Film faced bottom side - Stays Flat  
 Intended Use - A waterproofing Top Coat Roofing Felt. Ideal for use on Sheds, Summerhouses, Kennels and Hutches  
 Fixing Method - Galvanised Clout Nails, spaced every 50mm  
 Felt Adhesive/Felt Joint Adhesive, brushed along edges  
 Life Expectancy - 5+ years

Prod. Code	Size
QC10217	10m x 1m

## Turbo Roofing Kit / Detail Roofing Kit Both 4 metre lengths

Heavy-duty burners ideal for drying, bitumen laying and detail work on roofs, road works and other heat demanding applications like preheating before weldings, melting snow and ice etc.



**Now in Stock**



# Silirub<sup>®</sup> LMN



## DESCRIPTION

Neutral cure building silicone sealant SUPERIOR QUALITY low modulus neutral cure silicone sealant. Very fast skinning time and final cure. Thick-bodied. Excellent toolability. Primerless adhesion on all common construction materials (glass, plastics, masonry substrates, metals and wood). High movement capability. Resistant to UV, rain, snow. High and low temperature resistance.

## APPLICATIONS

Glazing, construction and industrial sealing applications. Perimeter sealing of window and door frames. Sealing of roofline and drainage systems. Weather sealing of aluminium glazing systems, curtain walling and façade panels. Can be used with all types of glass, except self-cleaning types. Sealing of expansion joints. Roofing seals including lead, roofing slates, and fibre-cement. Industrial applications; coated metals, anodized aluminium, stainless steel. HVAC ducting, pipework and drainage joints. General maintenance and sealing.

- Low modulus neutral cure silicone
- Primerless adhesion on most surfaces
- Conforms to ISO 11600 F&G 25 LM
- Extensive colour range

