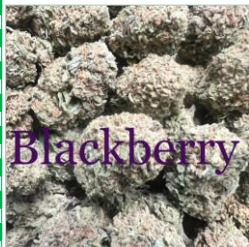


# A 1 REDEYE DELIVERY

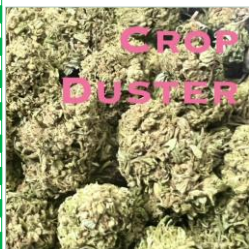


Blackberry

## BLACKBERRY ~ Hybrid

Blackberry is a hybrid strain with a perfect blend of indica and sativa. If you are looking for a daytime strain, don't look any further. Blackberry offers a body and cerebral high that will overwhelm you in no time. You will feel more energetic and talkative all the while feeling incredibly social. Blackberry is equally effective at treating stress, depression, anxiety, and, due to its body numbing effects, chronic aches and pain as well.

**1/8 = \$35; 1/4 = \$70; 1/2 = \$120; 1OZ = \$210**

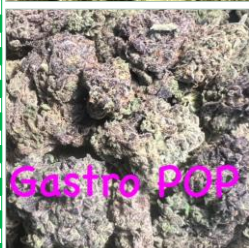


Crop Duster

## CROP DUSTER ~ Sativa

Crop Duster, a sativa dominant hybrid, is the perfect bud to get you out of bed on a lazy morning. Crop Duster is filled to the brim with energy, creativity & motivation. As your mood lifts and your mind expands, you'll be filled with a creative energy & sociability that is perfect for finishing your to-do list or helping you feel more outgoing in social situations. Great for treating chronic stress or PTSD, depression, chronic fatigue & mood swings.

**1/8 = \$40; 1/4 = \$80; 1/2 = \$140; 1OZ = \$240**



Gastro POP

## GASTRO POP ~ Hybrid

Gastro Pop is an evenly balanced hybrid, a cross of Apples & Bananas and Grape Gas. The effects of Gastro Pop have been said to be well-balanced and calming. The experience has been described as starting in the mind with an uplifting cerebral high that provides a gentle euphoria. As the initial effects dissipate, a soothing and relaxing physical release takes over. Many report feeling their physical tension melt away.

**1/8 = \$45; 1/4 = \$90; 1/2 = \$160; 1OZ = \$270**



Gelato #33

## GELATO #33 ~ SD Hybrid

Gelato #33 is a hybrid strain created through a cross of Sunset Sherbet X Thin Mint Girl Scout Cookies. Even with its slight indica dominance, the high is head heavy in nature and won't leave you sedated or couch locked. This makes Gelato #33 perfect for people suffering from chronic pain & fatigue, inflammation, & headaches or migraines. Gelato #33 offers an uplifting and energetic high that is perfect for any post-work activity after a long day.

**1/8 = \$30; 1/4 = \$60; 1/2 = \$100; 1OZ = \$180**



Guava Jelly

## GUAVA JELLY ~ SD Hybrid

Guava Jelly is a sativa-dominant hybrid cross of Wedding Cheesecake, Durban Poison, OG Kush, & Strawberry Kush. Guava Jelly is a great choice for your wake and bake session, as the effects are uplifting enough for you to remain productive throughout your day. It's also ideal for medical marijuana patients looking to relieve symptoms associated with depression and loss of appetite.

**1/8 = \$45; 1/4 = \$90; 1/2 = \$160; 1OZ = \$270**

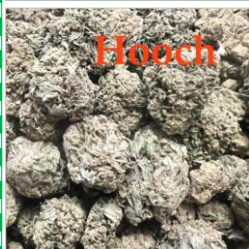


Headband

## HEADBAND ~ ID Hybrid

Headband is an indica dominant hybrid cross of OG Kush and Sour Diesel. Though the strain delivers a strong mix of euphoria & creativity, it's better used as a rainy-day strain, as it tends to cause a spacey feeling that can hinder daytime tasks. The strongest effects are centered on the body, making it a good choice for chronic pain & anxiety. It can also be used to treat nausea & wasting conditions, as well as mood disorders, muscle spasms, & migraines.

**1/8 = \$40; 1/4 = \$80; 1/2 = \$140; 1OZ = \$240**



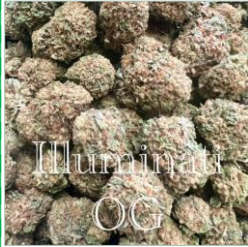
Hooch

## HOOCH ~ ID Hybrid

Hooch is an indica dominant hybrid cross of Slurty3 & Street Guru. When smoked, it has an earthy and floral flavor, without being too overwhelming. Hooch is a great strain for relaxing in the evening, not overly sedating. The effect has been described as making users feel talkative, giggly and happy, all while feeling extreme relaxation. A great strain for socializing and talking late into the night.

**1/8 = \$35; 1/4 = \$70; 1/2 = \$120; 1OZ = \$210**

# A 1 REDEYE DELIVERY



## ILLUMINATI OG ~ ID Hybrid

ILLUMINATI OG is a rare indica dominant hybrid, infamous for its introspective thought-inducing high that leaves you questioning everything and anything around you. The high from this one begins like a slightly soothing head massage. As you're quickly and subtly seduced by these calming effects, the powerful Illuminati OG seizes your mind. Great for treating chronic pain, insomnia, fatigue, inflammation, and glaucoma or eye pressure.

**1/8 = \$40; 1/4 = \$80; 1/2 = \$140; 1OZ = \$240**



## LAUGHING GAS ~ SD Hybrid

Laughing Gas is a sativa dominant hybrid strain created through crossing the classic Laughing Buddha X Gas strains. You'll be hit with uncontrollable laughter mere minutes after your last toke, so you'd better get ready for the giggles. You'll become sociable, as conversation comes easily and creativity blooms. Even with your uncontrollable giggling, you'll still feel physically relaxed, keeping you anchored to the world below as your mind soars.

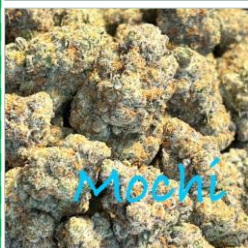
**1/8 = \$35; 1/4 = \$70; 1/2 = \$120; 1OZ = \$210**



## MANGO ~ ID Hybrid

Mango, also known as "Mango OG," is an indica strain made by crossing KC 33 with Afghani. This strain produces euphoric and uplifting effects that are sure to boost your mood. This strain is a bit sneaky, with a slight high that makes you feel calm and joyous, ending up with a growing sense of energy and a happy attitude that allows you to be creative. Many users notice a body high associated with Mango and primarily note feelings of warm tingles.

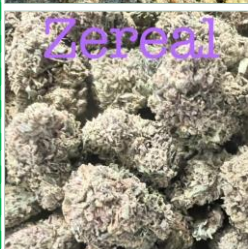
**1/8 = \$30; 1/4 = \$60; 1/2 = \$100; 1OZ = \$180**



## MOCHI ~ ID Hybrid

Mochi is an indica leaning hybrid cross of Thin Mint Girl Scout Cookies & Sunset Sherbet. The high starts with a lifted effect that fills you with a sense of euphoria & deep calm. An influx of creativity comes next that may lead to productivity on detailed tasks. As time passes, or as dosage is increased, Mochi's initial cerebral effects melt into more of a heavy body stone, and its general euphoria may ease the symptoms of stress, depression, & even anxiety.

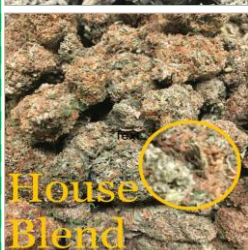
**1/8 = \$45; 1/4 = \$90; 1/2 = \$160; 1OZ = \$270**



## ZEREAL ~ ID Hybrid

Zereal is a slightly indica dominant hybrid cross of Zkittlez & Cereal Milk. The perfect tasty bud for any indica lover, Zereal brings on a mouthwatering flavor and super sociable high that's ideal for any lazy afternoon spent with friends, with lifted and happy effects that boost the spirits before helping you to settle into a long and peaceful sleep. Great for treating chronic pain, depression, chronic fatigue, insomnia and chronic stress.

**1/8 = \$40; 1/4 = \$80; 1/2 = \$140; 1OZ = \$240**



## HOUSE BLEND ~ Variety

This prime mixture features large to small buds (not shake or trim) of a variety of flowers, indica, sativa, and hybrid, some recently removed from the menu to make room for new stock, and some still currently available on the menu. New strains are added frequently, so chances are you'll get something new to try every time you order this high-quality blend!

**1/8 = \$30; 1/4 = \$60; 1/2 = \$100; 1OZ = \$180**

**SALE!!!**

**1/2 = \$80;**

**oz = \$125**