

**FFF8E7**  
**The Average Color of the Universe, or  
the Sum of the Light of All of the Galaxies**

**Johns Hopkins University (July 1, 2002)**

**Discoverers and Judges  
Karl Glazebrook & Ivan Baldry**

<b>Color Name (hex triplet value #FFF8E7)</b>	<b>Number of Votes (from JHU astronomers)</b>	<b>Credits</b>
Cappuccino Cosmico	17	Peter Drum
Cosmic Cream	8	Several
Astronomer Green	8	?
Astronomer Almond	7	Lisa Rose
Skyvory	7	Michael Howard
Univeige	6	Several
Cosmic Latte/Latteo*	6	Peter Drum/Rees Bear
Big Bang Buff/Blush/Beige	13	Lots!!!
Cosmic Khaki	5	?
Primordial Clam Chowder	4	?
Codename Eggnog	?	Hana Watanabe/Becky Graham

\*Our favourite suggestion because "Latteo" means "Milky" in Galileo's native Italian. So a nice cosmic connection: "Via Lattea" is the "Milky Way" and the color of the Universe would be pretty similar to the color of the Milky Way Galaxy, it is of course just the sum of the light of all the galaxies.

**Extracted from a Web Archive Twenty Years Later.**

"The 'Average Color of the Universe' will also change as stars dim over time.  
It is also based on what the human eye would see looking at the universe from afar in the dark."  
<https://www.astro.ljmu.ac.uk/~ikb/Cosmic-Spectrum.html>  
-Accessed 12/22/2022

**BEST GUESS:**

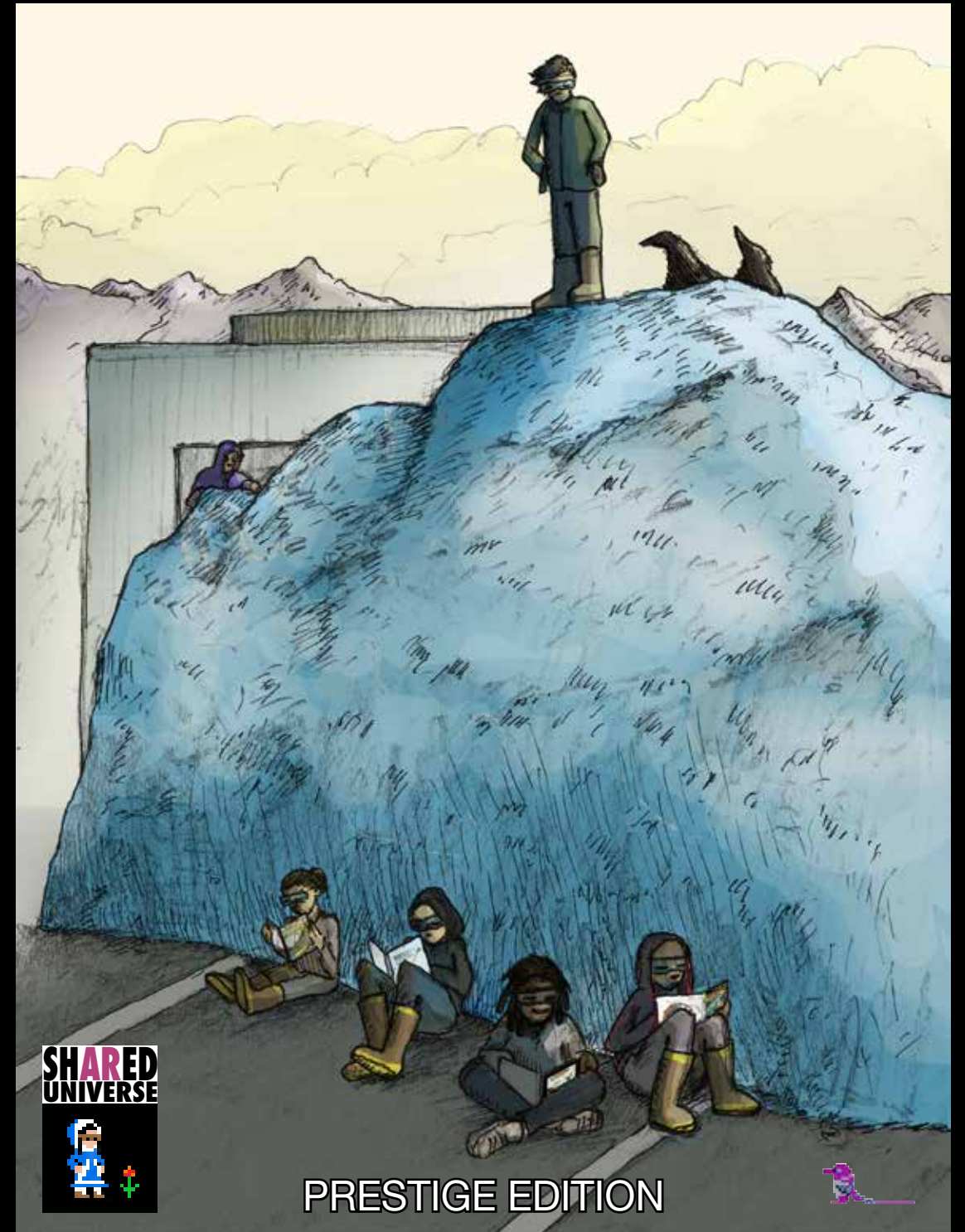
**Illuminant E  
Gamma**

(equal energy white point)



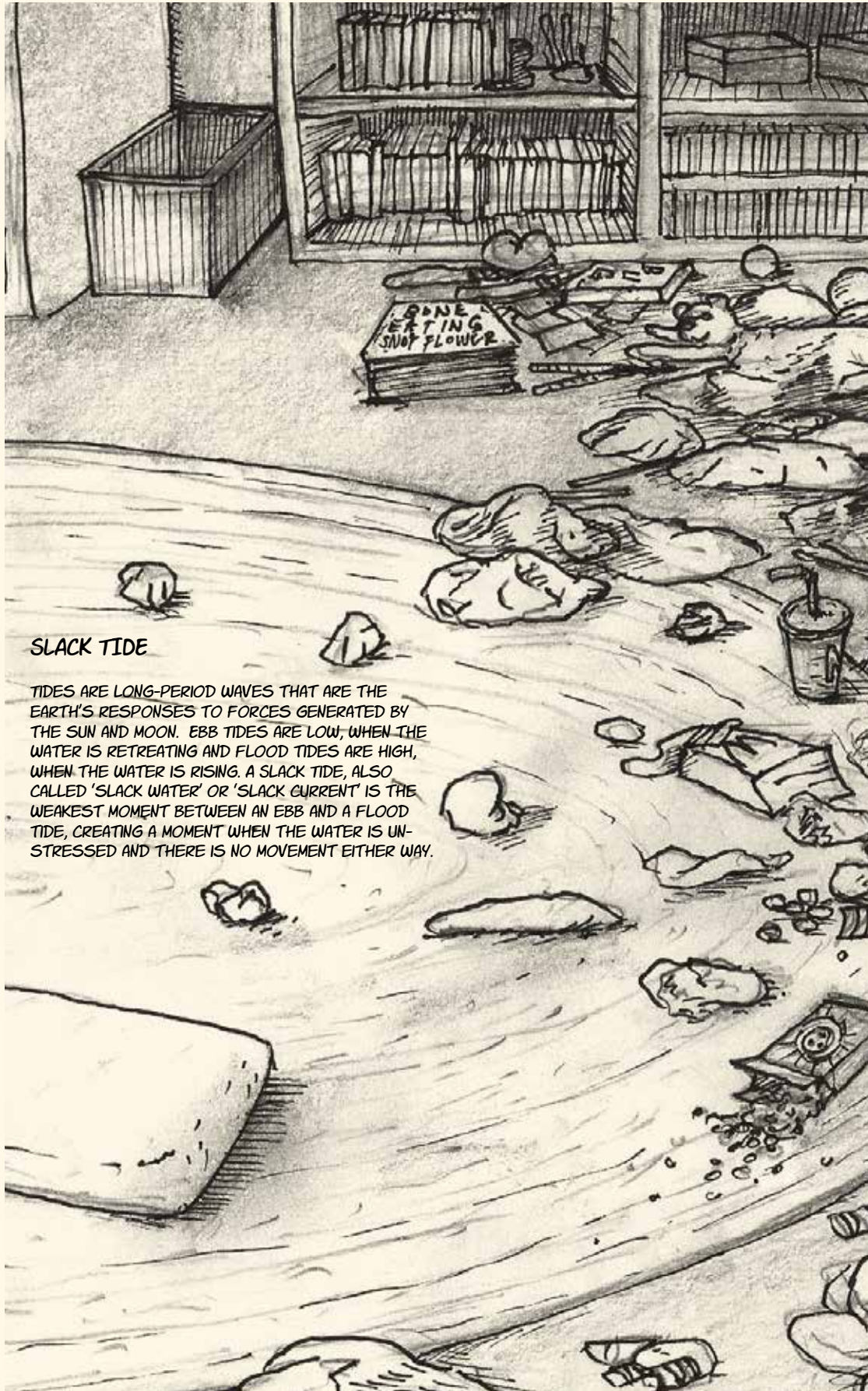
**NATHAN SHAFER**  
**WINTERMOOT**

**BOOK FIVE | SLACK TIDES | SIDE TWO | STEVEPUNK AND TUYANAUT**



**PRESTIGE EDITION**





## SLACK TIDE

TIDES ARE LONG-PERIOD WAVES THAT ARE THE EARTH'S RESPONSES TO FORCES GENERATED BY THE SUN AND MOON. EBB TIDES ARE LOW, WHEN THE WATER IS RETREATING AND FLOOD TIDES ARE HIGH, WHEN THE WATER IS RISING. A SLACK TIDE, ALSO CALLED 'SLACK WATER' OR 'SLACK CURRENT' IS THE WEAKEST MOMENT BETWEEN AN EBB AND A FLOOD TIDE, CREATING A MOMENT WHEN THE WATER IS UNSTRESSED AND THERE IS NO MOVEMENT EITHER WAY.

## WHEN WE USED TO MAKE WINTER CAMPS

FROM THE PERSONAL LETTERS OF CHESTER CROWLEY:

DEAR ARÊTE,

SO ... THE WINTERMOOT WE WOULD HOLD, WE CALLED IT THE PLASMOOT, OR WINTER NORTHERN LIGHTS CAMP - WE WOULD HOLD IT AT SOME THERMOPAUSE BEFORE I BUILT THE DOCK. NOW THAT IS THE BOREALIS DOCK, MIND YOU, AND THAT WAS ROUND THERE ABOUT 1960.

THE KIDS WOULD MEET AT THE BASE OF THE SPACE ELEVATOR THE GLACIER-SEEDERS AND LIGHT-SCRAPERS UNIONS BUILT. THEY MADE IT OUT OF DRIFTWOOD AND LIVING GLACIAL ICE, FUSED WITH LIVING PLASMA. OF COURSE, THEY DID NOT CALL IT A 'SPACE ELEVATOR'. THEY CALLED IT SOMETHING ELSE, I DON'T REMEMBER. BUT IT WAS MADE BY THOSE FOLK, AND THE DRIFTWOOD WAS COLLECTED OVER TENS OF THOUSANDS OF YEARS, DAMN NEAR 200,000 YEARS AGO, IN SOME SEAS THAT ARE NOW PART OF TANAM UNANGAA, THE UNANGAN HOMELAND.

I KNOW EVERYONE WANTS TO POINT AT THE BAD PARTS OF ALL OF THAT STUFF, LIKE HOW THE CAMPS USED TO BE SEGREGATED OR WHATEVER, BUT WE DESEGREGATED WAY BEFORE THE CIVIL RIGHTS MOVEMENT. JUST TO POINT THAT OUT. I TELL PEOPLE WE WERE PIONEERS THAT WAY. WAY BEFORE EVERYONE ELSE. WE WERE EVEN A DECADE BEFORE THE GLACIER CAMPS DESEGREGATED. BUT EVERYONE IS TOO WORRIED ABOUT POLITICAL CORRECTNESS NOW TO ADMIT IT, AND WE DESERVE THE CREDIT FOR BEING THE FIRST. OUR STUDENTS KNOW THE WAY OF THINGS. WE NEVER HAD THE SPLINTER GROUPS, ALL THE FACTIONS KEPT WORKING TOGETHER, EVEN WHEN THE ONEIRONAUTS STARTED CHARTERING OUT OF OUR PORT.

TO ANSWER YOUR QUESTION ABOUT THE PARTICULARS FROM WHEN RED BOREALIS AND SOLAR PLAGE HELPED ME BUILD THE BOREALIS DOCK -- NOW, THERE WERE NO CHRONOMIUT OR SPATIUMIUT INVOLVED, BUT THERE WERE A COUPLE OF GENTLEMEN CRYONAUTS, HARDWATER'S MEN. THIS WAS ALSO WHEN THEY WERE CONSTRUCTING THE DOMED CITIES DOWN ON THE SURFACE. WE HAD A DIRECT PLASMAGATE DOWN TO ARCTIC CITY ONCE PEOPLE STARTED LIVING IN THERE, THAT WAS THE PORTAL CYBERGOD OF DISRUPTION SULLIED DURING THE (M)TAPESTRY EVENT, THE ONE THAT TOOK THE GODWIT ARCADE.

ANYWAY, I DON'T KNOW ANYONE WHO ACTUALLY REMEMBERS THAT STUFF ANYMORE. I STILL KEEP A PERMANENT CAMP ON THE BOREALIS DOCK, BUT IT IS PRETTY LONELY THERE OF LATE. HASN'T BEEN A REAL DYED-IN-THE-WOOL PLASMAUT COME THROUGH OUR CAMP IN SEVERAL YEARS, NOT SINCE MAGNETOTAL.

SINCERELY,  
CHESTER CROWLEY (GREEN BOREALIS)

## FROM THE KENNETH HARDWATER ARCHIVAL TAPES

AT FIRST, GREENIE AND I WOULD HOLD OUR WINTER CAMPS TOGETHER - THE WINTERMOOTS, BUT WE ALWAYS JUST SAID 'WINTERMOOT', WITHOUT THE 'S'. MOOT, AS IN A MEETING, NOT THE LEGAL TERM, IT WAS A MEETING IN WINTER, THE WINTER CAMP. WE STARTED SAYING THAT AFTER THE SOCIALISTS AND PIONEERS HALL BURNED DOWN. WE WOULD DO A MEET AND GREET TYPE OF THING FOR A FEW DAYS AT WHATEVER HERMITAGE THE SPACE ELEVATOR WOULD APPEAR AT, BEFORE WE BROKE INTO CAMPS FOR THE REST OF THE MONTH.

THEY USED TO HOLD A FORMAL DANCE EVENT, FOR ALL THOSE TEENAGE KIDS, AND WE WOULD BREAK OUT OUR FIDDLES FOR THAT, HAVE A HOOTENANNY. BUT THEY ALL STOPPED DOING THAT IN THE SIXTIES, AFTER GREENIE BUILT THE BOREALIS DOCK. THAT WAS WHEN RED BOREALIS WAS ON THE TEAM TOO. AND HE DIED MYSTERIOUSLY DURING THE CONSTRUCTION OF THAT SPACE STATION. BUT TONS OF THOSE KIDS WOULD MEET EACH OTHER IN THE CAMPS AND GET MARRIED OR WHATEVER.

SO -- FAMILIES STARTED BEING NORMAL, KIDS WHO GREW UP GOING TO WINTERMOOT UNTIL THEIR POWERS MANIFESTED. A COUPLE GENERATIONS IN - THAT IS WHEN THE CRYOPUNKS STARTING COMING AROUND; AND THEY WEREN'T INTO THE WAY WE DID THINGS. AND EVENTUALLY ME TOO, BY THE WAY. WE LEFT AND STARTED THE ALTERNATE LITEH CAMP. I RENOUNCED ALL OF THAT BOY SCOUT TYPE STUFF, DIDN'T WANT TO DO IT THAT WAY ANYMORE.

-- KENNETH HARDWATER, AKA CAPT. KENAI THE GLACIERMAN



### INDOOR ANTHROPOGENIC BIOME

DATA ON THE INDOOR ANTHROME'S EVOLUTIONARY PROCESSES VARIES FROM INFORMAL ANECDOTAL EVIDENCE TO CONTENTIOUS DEBATES. IT IS ESTIMATED THAT INDOOR ANTHROPOGENIC BIOMES (BOTH RESIDENTIAL AND COMMERCIAL) COMPROMISE ABOUT 4% OF THE WORLD'S ICE-FREE LAND MASS, ROUGHLY THE SAME AMOUNT OF ICE-FREE LAND MASS THAT FLOODED GRASS LANDS AND TROPICAL CONIFEROUS FORESTS OCCUPY. THE INDOOR BIOME IS GROWING EXPONENTIALLY, AS IT CAN CREATE NEW SPACE TO OCCUPY BY BUILDING UPWARDS AND IN LAYERS, E.G. THERE IS ON AVERAGE 2-3 TIMES MORE INDOOR BIOME LAND MASS IN MAJOR CITIES THAN THERE IS ICE-FREE URBAN LAND MASS. HUMAN ACTIVITY IN THE INDOOR BIOME IS ONE OF THE KEY FACTORS IN DETERMINING THE EVOLUTION OF INDOOR SPACES, PARTICULARLY IN THE CLEANING PRACTICES AND STEWARSHIP OF THIS ANTHROME.

WHY DO YOU COVER YOUR FACE WITH YOUR HAIR SWEETIE?

I AM GOING TO CUT YOUR HAIR DUDE. IT WILL BE NICE.



YOU NEED BANGS.  
THEN ALL THE GIRLS WILL BE ABLE TO SEE YOUR LUSCIOUS EYELASHES!

ASH. I...  
UGH...  
I DON'T THINK YOU ARE DISTRACTING ME RIGHT.

IT ALWAYS GETS SUPER SCARY WHEN YOU TRY AND USE YOUR POWERS LIKE THIS!  
TANJ IT ALL BRO! I KNOW WHAT I AM DOING. TRUST ME.  
IT'S JUST, I AM BLEEDING REAL BAD. AND I DON'T THINK THIS WILL WORK.



WHAT? ARE WE GOING TO GO TO THE HOSPITAL? THINK IT THROUGH DUDE.  
THEY ARE LOOKING FOR US. THAT IS THE FIRST PLACE THEY WILL GO.  
BUT NO ONE KNOWS WHERE WE ARE. NO ONE KNOWS ABOUT OUR HIDE-OUT, TAY-JAY.  
WE AREN'T ARETE OR MAGPIE. WE ARE ASHLEY AND TAYLOR, JUST A COUPLE OF BROODY TEENS.

THE LAST TIME WE TRIED THIS THOUGH, THE CITY LOST POWER FOR HOURS. ASH...  
THOSE GUYS TURNED INTO GIANT HAIRBALLS AND SMELLED LIKE SPOILED MILK.  
TROLL CAT AND MILK RABBIT ARE A COUPLE OF DICKS.

YEAH, THEY SUCK TRUCK NUTS.  
BUT, I GOT A BETTER GRIP ON MY POWERS NOW. WILL CAUTERIZE IT. THEN YOU WILL HAVE ANOTHER BADASS SCAR!



[ONE WEEK EARLIER]

[DAVENPORT REELECTION VICTORY SPEECH]

[SEWARD'S SUCCESS, ALASKA]

AND LET ME TELL YOU ANOTHER THING... IF YOU ARE A CRIMINAL. HOW DOES IT FEEL NOW?

THROUGH BILLS I PASSED OVER THE LAST FOUR YEARS, ALASKA HAS SEEN A REDUCTION IN CRIME SO DRASTIC THAT WE HAVE BECOME THE TALK OF THE ENTIRE NATION!

OUR WAR ON CRIME IS WORKING!

ENTIRE COMMUNITIES HAVE HAD CRIME ERADICATED. IN SOME INSTANCES, OVERNIGHT!

EVERYWHERE I GO THROUGHOUT THIS GREAT STATE, PEOPLE COME UP TO ME AND THANK ME FOR ALL OF THE GOOD THIS ADMINISTRATION IS DOING FOR THE STATE OF ALASKA.

ELDERS IN THE VILLAGES CAN'T THANK ME ENOUGH FOR ALL OF THE GOOD WORK WE ARE DOING. 'YOU WERE SENT BY GOD TO SAVE ALASKA, GOVERNOR,' IS WHAT THEY SAY TO ME.

I ALWAYS RESPOND THE SAME WAY. "GOD MAY HAVE SENT ME HERE. BUT IT IS MY HARD WORK, DEDICATION AND COURAGEOUS POLICIES THAT HAVE MADE THIS STATE THE WONDER IT IS TODAY!"

WHAT A DOUCHE!



[MULDOON, ANCHORAGE]  
[ASHLEY, HER DAD AND STEPMOM'S TRAILER]

IT IS TIME TO BRING ALASKA IN FROM THE COLD!

FOR TOO LONG ALASKA WAS LIVING OFF THE GOVERNMENT TEAT. WHEN I FIRST CAME INTO OFFICE, I KNEW IT WAS HIGH TIME TO SHAKE UP THE ESTABLISHMENT.

NO MORE FREE TICKETS.



**BREAKING NEWS**

**Orion Davenport Reelected Governor of Alaska**

Campaign had gained national attention when it was discovered Davenport had ties to both the Country Woods Establishment and the Thin Ubu Line. Both of these groups are considered terrorist organizations and H8Watch has labeled the Country Woods Establishment as a White Nationalist group with a threat level of 3 out of 4.

Live from Seward's Success

**AKTV ANCHORAGE**

IT IS TIME FOR TRUTH.

WE ARE THE FUTURE!



MAY GOD CONTINUE TO GRANT US DOMINION OVER THESE LANDS.

AND MAY HE CONTINUE TO BLESS THE GREAT STATE OF ALASKA!





I SERIOUSLY HATE THIS CHEESEBAG.

NOW, MANY OF YOU ALASKANS ARE FURIOUS...

GOVERNOR DAVENPORT REELECTED IN CLOSE RACE



OH BE NICE. HE ONLY WANTS TO HELP.

CHERYL. IT IS OPEN WAR ON RURAL ALASKA.

HOW CAN YOU SAY THAT? REALLY?!

IT'S WAR ON PEOPLE LIKE US TOO!



THAT IS JUST TALK. HE DOESN'T MEAN THAT STUFF ABOUT US.

WE WORK HARD FOR EVERYTHING WE HAVE.

YOU WILL UNDERSTAND WHEN YOU START DOING EVERYTHING YOURSELF.

UGH!! I CAN'T EVEN WITH YOU SOMETIMES!



EMERGENCY ALERT: POSSIBLE ALIEN SPACECRAFT ENTERING ORBIT ABOVE ALASKA

WE INTERRUPT THIS COVERAGE FOR AN EMERGENCY ALERT. WE ARE GOING LIVE OUTSIDE OF SEWARD'S SUCCESS, TO WHAT LOOKS LIKE POSSIBLY ALIEN SPACESHIPS LANDING NEARBY.

THEY ARE BREAKING IN FROM OUR ATMOSPHERE -- GOVERNOR DAVENPORT HAS STOPPED HIS VICTORY SPEECH AND WILL BE MOVING INTO THE GOVERNMENT SAFE ROOM IN THE CITY. OH WAIT, HE IS SPEAKING.

[MULDOON ANCHORAGE] [TAYLOR AND HIS FATHER'S TRAILER]



WE ARE URGING ALL ALASKANS TO STAY IN THEIR HOUSES AND NOT WANDER ABOUT UNTIL THE THREAT LEVEL HAS BEEN ASSESSED.



WHAT THE --

MY FELLOW ALASKANS THERE IS NO NEED TO PANIC.

WE HAVE DONE THIS BEFORE.

[LOW ORBIT PLANETARY EVENT]  
[SEWARD'S SUCCESS, ALASKA]  
[DURING GOVERNOR DAVENPORT'S SPEECH]



DO YOU SEE IT?

LOOK! A SHOOTING STAR!

IT IS PROBABLY A SATELLITE.

IF YOU ARE JOINING US NOW, WE ARE COVERING THE EVENTS IN SEWARD'S SUCCESS AS THEY ARE HAPPENING LIVE. SEVERAL FIGURES HAVE DESCENDED ON THE OUTSKIRTS OF TOWN.

RESIDENTS ARE BEING ASKED BY THE NEWLY REELECTED GOVERNOR TO REMAIN IN THEIR HOUSES AND NOT PANIC OR TRY TO EVACUATE. IN TOTAL, TWO FIGURES HAVE MADE LANDFALL IN SOUTH CENTRAL ALASKA NEAR ANCHORAGE. MORE UPDATES SOON.



SHH. SHH. I WANT TO HEAR THIS.

BRUCE ALMIGHTY! WHAT IS THIS?

GREAT.

PLEASE DON'T SAY THIS IS A CONSPIRACY.

THIS IS 100% THE WORK OF THE DEEP STATE.

IT IS NOT CURRENTLY KNOWN WHO THESE VISITORS ARE OR WHY THEY ARE LANDING IN ALASKA.

THE TECH THEY ARE USING IS JUST LIKE THE STUFF FROM BEFORE.



WHAT BEFORE?

THIS HAS NEVER HAPPENED BEFORE.



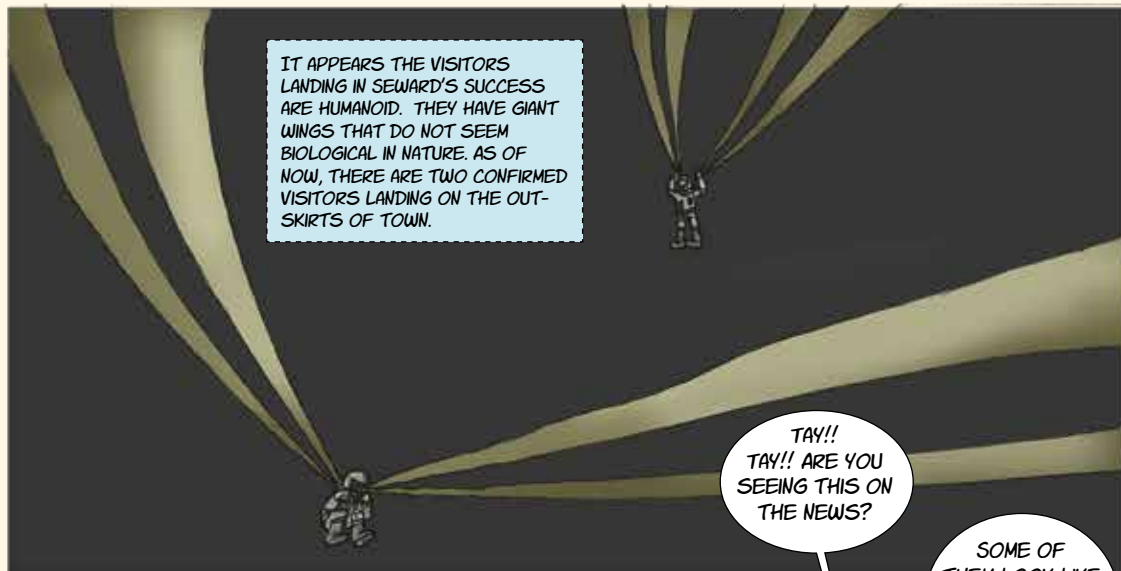
THE LAST TIME, WHEN THOSE "MAGICAL FOLKS" HAPPENED.

BACK WHEN YOU WERE A BABY.

UGH. WHAT. EVER.

I AM GOING OVER TO TAY'S HOUSE.



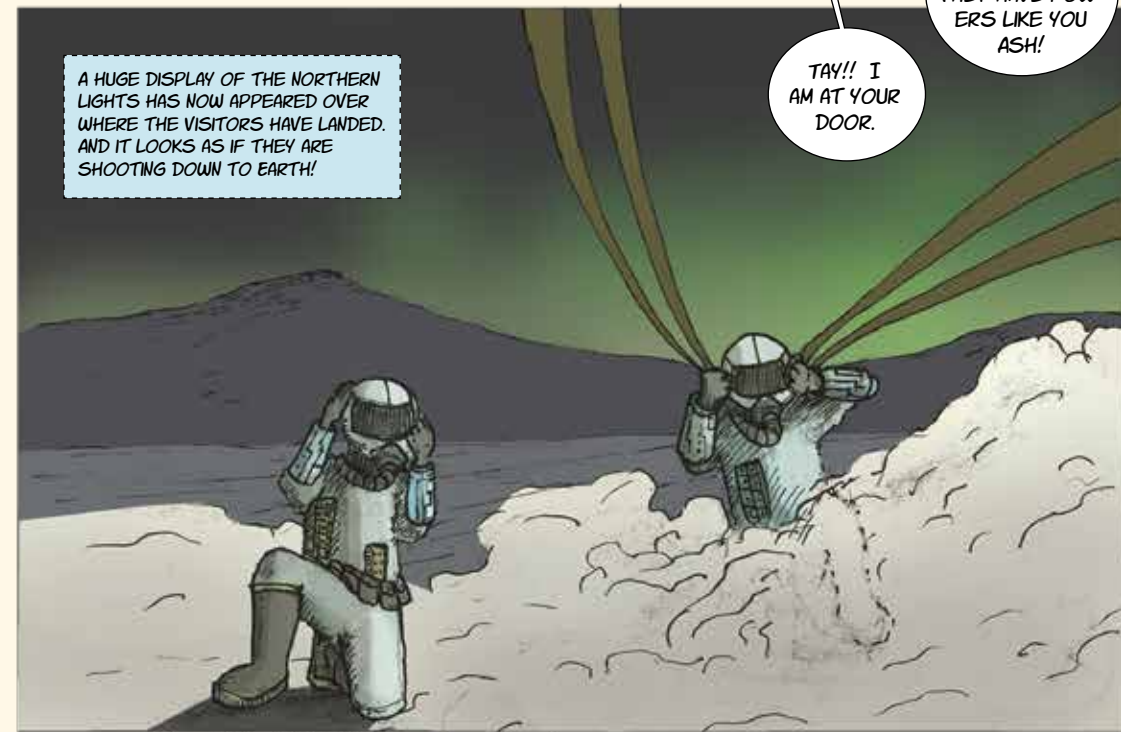


IT APPEARS THE VISITORS LANDING IN SEWARD'S SUCCESS ARE HUMANOID. THEY HAVE GIANT WINGS THAT DO NOT SEEM BIOLOGICAL IN NATURE. AS OF NOW, THERE ARE TWO CONFIRMED VISITORS LANDING ON THE OUTSKIRTS OF TOWN.

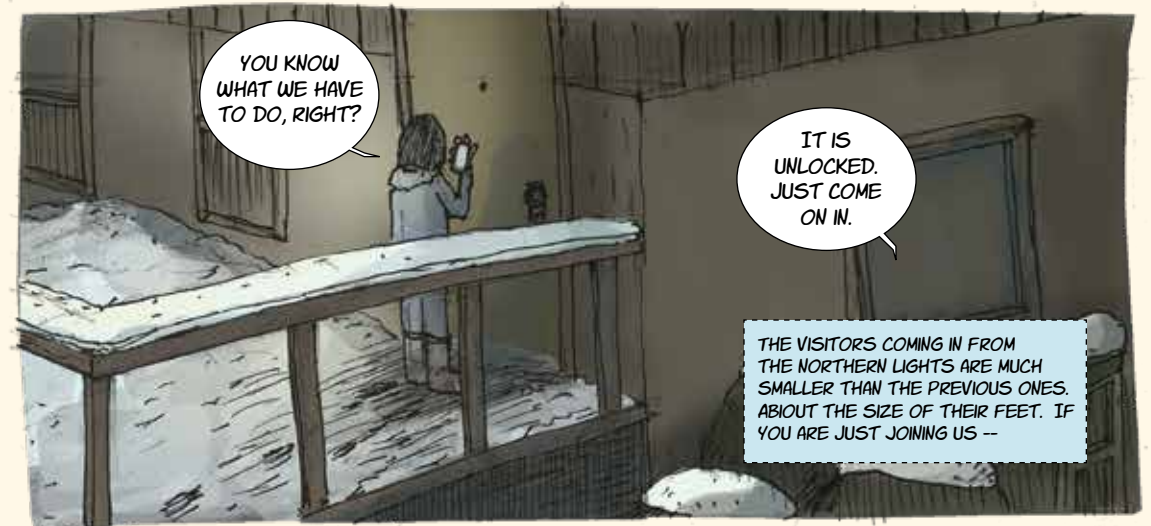
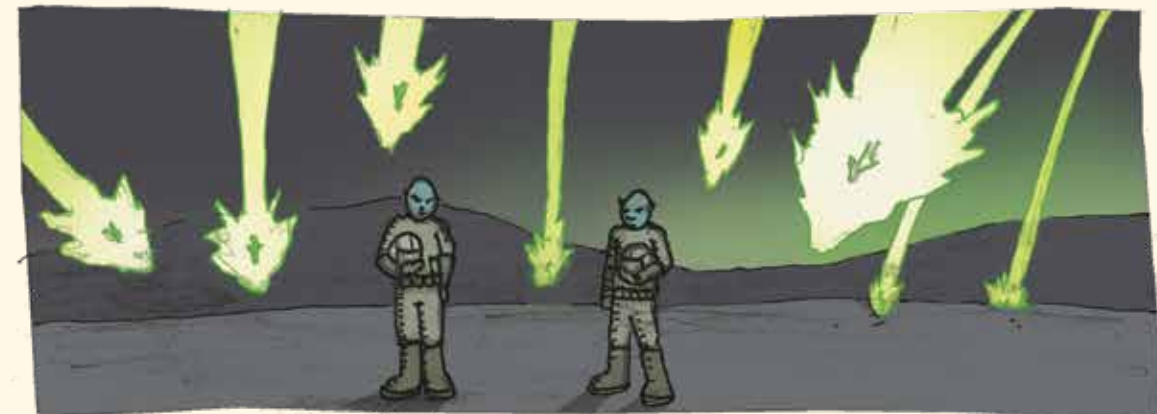
TAY!!  
TAY!! ARE YOU SEEING THIS ON THE NEWS?

SOME OF THEM LOOK LIKE THEY HAVE POWERS LIKE YOU ASH!

TAY!! I AM AT YOUR DOOR.



A HUGE DISPLAY OF THE NORTHERN LIGHTS HAS NOW APPEARED OVER WHERE THE VISITORS HAVE LANDED. AND IT LOOKS AS IF THEY ARE SHOOTING DOWN TO EARTH!



YOU KNOW WHAT WE HAVE TO DO, RIGHT?

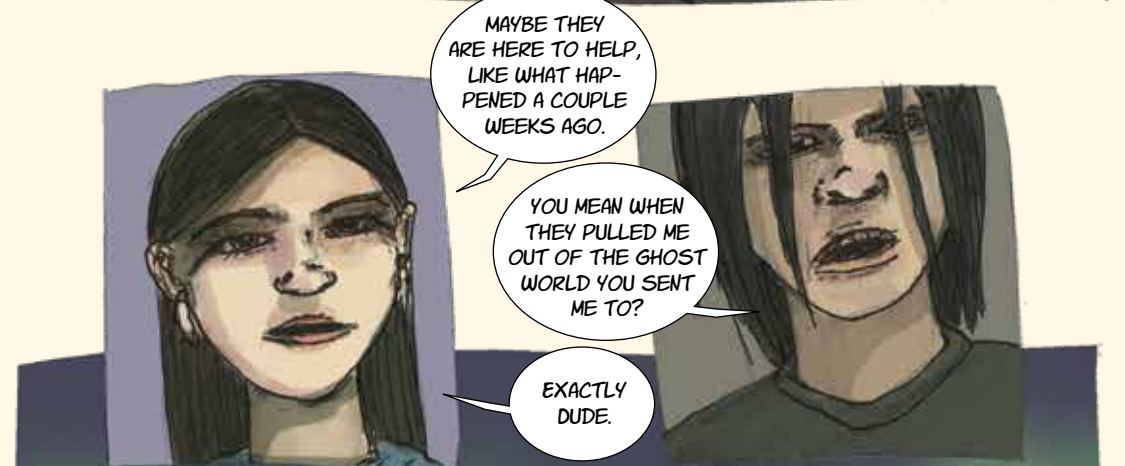
IT IS UNLOCKED. JUST COME ON IN.

THE VISITORS COMING IN FROM THE NORTHERN LIGHTS ARE MUCH SMALLER THAN THE PREVIOUS ONES. ABOUT THE SIZE OF THEIR FEET. IF YOU ARE JUST JOINING US --



THEY ARE THE FRIGGIN' PLASMIUT, ASH.

WHAT ARE THEY DOING HERE?



MAYBE THEY ARE HERE TO HELP, LIKE WHAT HAPPENED A COUPLE WEEKS AGO.

YOU MEAN WHEN THEY PULLED ME OUT OF THE GHOST WORLD YOU SENT ME TO?

EXACTLY DUDE.



THIS IS ABSOLUTELY UNBELIEVABLE! THE VISITORS ARE ALL ON THE GROUND AND ARE NOW SPINNING AROUND IN CIRCLES! IN ALL MY YEARS AS A NEWS ANCHOR, I HAVE NEVER SEEN ANYTHING LIKE THIS!

NOW THERE APPEARS TO BE A GIGANTIC CRACK IN THE SKY! AND EVERYONE ON THE GROUND IS STILL SPINNING!



IF YOU ARE JUST JOINING US, THERE HAS BEEN ONE OF THE MOST SIGNIFICANT MOMENTS IN HUMAN HISTORY UNFOLDING BEFORE OUR EYES.

VISITORS FROM OUTER SPACE HAVE DESCENDED ON ALASKA, THEN IMMEDIATELY PROCEEDED TO TWIRL AROUND. THEN THE SKY CRACKED OPEN AND --



AND, AND, I REALLY DON'T KNOW WHAT TO SAY. THE GIANT MOVED A PILLAR OF ICE FROM WHAT I AM ASSUMING IS ANOTHER DIMENSION, AND PUT IT ON THE GROUND.



REMEMBER THAT TIME MAGPIE TOLD US ABOUT THE SPACE ELEVATOR?

I THINK THEY JUST SUMMONED IT.

TAY, LET'S GET TO THE SECRET HIDE-OUT BRO!

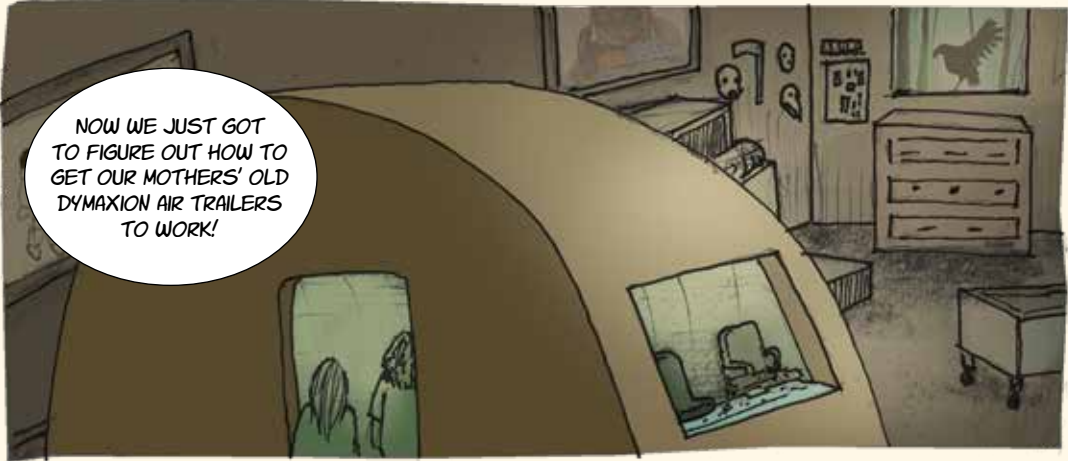
IT IS THE PERFECT TIME.



THIS IS SCARY AS HELL ASH.

YOU KNOW WHAT TIME IT IS MY DUDE?

PLEASE DON'T.



TO BE CONTINUED IN WINTERMOOT SIX: SLACK TIDES, AGAIN ...

(equal energy white point)

Illuminant E  
Gamma

**BEST GUESS:**

"The Average Color of the Universe" will also change as stars dim over time. It is also based on what the human eye would see looking at the universe from afar in the dark." <https://www.astronomy.com/~tkb/Cosmic-Spectrum.html> -accessed 12/22/2022

Extracted from a Web Archive Twenty Years Later.

\*Our favourite suggestion because "Latte" means "Milky" in Galileo's native Italian. So a nice cosmic connection: "Via Lattea" is the "Milky Way" and the color of the Universe would be pretty similar to the color of the Milky Way Galaxy, it is of course just the sum of the light of all the galaxies.

Color Name (hex triplet value #FFF8E7)	Number of Votes (from JHU astronomers)	Credits
Cappuccino Cosmico	17	Peter Drum
Cosmic Cream	8	Several
Astronomer Green	8	?
Astronomer Almond	7	Lisa Rose
Skyvory	7	Michael Howard
Unveige	6	Several
Cosmic Latte/Latteo *	6	Peter Drum/Rees Bear
Big Bang Buff/Blush/Beige	13	Lots!!!
Cosmic Khaki	5	?
Primaldial Clam Chowder	4	?
Codename Eggnog	?	Hana Watanabe/Becky Graham

**Discoverers and Judges**  
Karl Glazebrook & Ivan Baldry  
Johns Hopkins University (July 1, 2002)

**FFF8E7**  
The Average Color of the Universe, or  
the Sum of the Light of All of the Galaxies

FOR  
MULTIPLE  
REASONS.

YOU REALLY  
SHOULD TIE YOUR  
HAIR BACK.