

Vol. 21 No. 1

Jan.-Mar. 2020

Editor - Paul Pullen

pullenp@gmail.com

www.wba-tca-eastern.org/home.html

www.facebook.com/wba.chaptertca

WB&A Board of Directors Officers:

President: Tom Salen

Vice Pres: John Buxton

Treasurer: Michael Ackerman

Secretary: Nada Boswell

Directors:

Bob Gray

Robert Heine

Skip Lee

Arnold (Arne) Meyrow

William (Bill) Moss

Eastern Division Representative:

David Eadie

Key Contacts:

Secretary: Phone: 571-445-3662

E:Mail: WBA.boswell@gmail.com

Membership: Phone: 301-322-9080

Train Shows:

Annapolis: 443-618-6866

<i>In This Issue</i>	<i>Page</i>
Message from your WB&A Board	1
Treasurer's Report	2
Secretary's Report	2
Historian's Corner	3
Membership Moments	3
Hobby Shops - Where Kids Young and Old Go for Fun	5
Christmas Gardens	6
Inaugural BOWIE Train Show	8
ATTENTION MEMBERS! Your assistance is needed!	11
Buffalo Creek Railroad Circa 1963	11



"The Trolley" The Official WB&A Newsletter



WB&A Chapter - Eastern Division - Train Collectors Association
Established 1964

Message from your WB&A Board

We are pleased to announce the election results for your new board members commencing January, 2020. Elected for two year terms are Tom Salen (President); John Buxton (Vice President); Michael Ackerman (Treasurer); and Nada Boswell (Secretary). The three board members re-elected are Bob Gray, Arne Meyrow, and Bob Heine. At this time, we still have one vacancy for a board directorship. Thanks to all who took the time to fill out and sent in your ballot.

The first Bowie Train Show held at the Knights of Columbus was a resounding success. Over 70 tables were occupied. A masterful O gauge layout along with an 'N' scale layout provided by Bob Gray was a delight to all who attended. For a first time show, we had many families with small children who attended. We had a large number of WB&A and TCA members participating and attending. Thanks to Karl and Brian Tashenberger and to Skip Lee for making this show happen. Please mark your calendar for our next show; the Annapolis Train Show and Sale at the Annapolis Elks Lodge on Sunday, February 23rd, 2020.

One of our members, Cal Keeney, has provided a wonderful holiday article on his family's traditional Christmas "Christmas Garden" layout. Cal has been working on this layout for the past two years. Please take time to read his article on the origins of the Christmas Garden tradition.

As you know, this newsletter is our main medium we use to reach out to all our members and particularly those who are no longer able to join us at our club's functions. Paul Pullen, our Trolley newsletter editor, is always looking for articles and pictures. If you have a story to tell or pictures of your layout or visited an interesting place, please do contact Paul at pullenp@gmail.com. Please refer to our website (<http://www.wba-tca-eastern.org/home.html>) for the latest information (Cont'd on Page 2)



Treasurer's Report as of

By Tom Salen

The Chapter's financial activities for Jan. 1, 2019, thru Nov. 30, 2019 are summarized below. If you have any questions or comments feel free to contact me at 703-242-7839 or strsalen@verizon.net

Check Book Balance – Jan. 1, 2019 \$30,052.38
Check Book Balance - Nov 30, 2019 \$30,653.84
Significant Activities Jan. 1, 2019 thru Nov.30, 2019

	Expenses	Revenue
Annapolis Show 2019	3080	3451
Bowie Mini/Show 2019	1953	2275
Membership Dues 2018	428	3210
Membership Dues 2019	100	3165
Membership Dues 2020		1050
Membership Donations		785
Bowie Baysox Game	187	99
Newsletter 2019	791	
Mini Meets	295	
Kids Korner	281	281
Web Site/	300	
Facebook	400	
Train Set for Drawing	811	725
Election 2019	305	
Miscellaneous Expenses	1101	

(BoD Notes Cont'd) on your club activities. Any suggestions for improvements or additions can be made via the suggestion menu option on the web-site.

We wish you all a Safe and Happy Holidays and hope to see you at one of our events in 2020. Thanks again for being part of WB&A .



TOP TEN WB&A BENEFITS

- 1 Fun and Fellowship with your Train Friends
- 2 Wealth of information available from other collectors, operators and layout builders.
- 3 A wonderful opportunity to participate at the local level in the world's greatest hobby.
- 4 Free admission to local WB&A Train Shows. (Show advertised in local newspapers).
- 5 Free admission at Members Only WB&A Swap Meets.
- 6 Receive quarterly the WB&A Newsletter "The Trolley".
- 7 Access to the chapter facebook page- www.facebook.com/wba.chaptertca
- 8 Share in the excitement of the Toy Train Hobby.
- 9 Serving as a committee member or officer at the local level is very rewarding.
- 10 Buy, Sell, Trade with local train enthusiasts.

WB&A Board of Directors Meeting

WB&A CHAPTER – TCA

WB&A CHAPTER – TCA
General Business Meeting
June 8, 2019

Chapter Treasurer Tom Salen called the meeting to order at 10:00 am. There was a Quorum present for the meeting to continue. Board members were introduced.

Old Business

Secretary's Report – Nada Boswell distributed the November 2018 General Business Minutes for review and discussion. There was a motion to accept the minutes as written, seconded and unanimously accepted.

Treasurer's Report – Treasurer Tom Salen provided the Treasurer's Report . The Club is in good financial shape now. There was a motion made to accept the report as written, seconded and unanimously accepted.

Eastern Report –Dave Eadie provided the Eastern Report. There has been an ongoing decline in attendance at York for the past several years. They are thinking of adding HO and N scale in October, if possible, to increase interest. The National Capital Trackers will be in the Black Hall in October. Eastern is looking into cutting back to a 2 day show, vendors will be surveyed and based on those results a decision may be made by the October 2019 show.

Membership report - Bill Moss presented the membership report. 7 new members joined at Annapolis. There are still some unpaid members for 2018 and reminder letters will be sent. Stickers for 2020 will be in soon to use at York in October.

New Business

Award for 50 years TCA Membership – Dan Danielson presented a framed certificate to Phil Graves honoring his 50 years as a TCA member, we all celebrated with a wonderful cake thanks to Dan and Hope. Amazing that there were 3 other 50 year members at the meeting, Charlie Reynolds, Clem Clements and Dan Danielson! Thanks to all of you for your continued support of the hobby.

Nominating committee – Nada - the committee has been formed and ballots will be mailed to all members in September and will be counted at the November General Business Meeting.

General Discussion – Clem Clement presented information on the Standards Committee. It discusses condition, etc. and can be a real help in evaluating a collection or individual item. Clem will be happy to discuss this with anyone with an interest.

Carol McGinnis discussed an effort working with Kids Club to encourage the use of Lego buildings, vehicles, etc. on layouts. Scale wise they work good with O and S trains. The information will appear in the fall newsletter for Kids Club and on Etrain, etc.

National Christmas Tree – it has been a 25 year tradition but 2019 may be the last year. Help is needed. Obviously it is down on the Mall, it is dark, cold, rainy, snowy and crowded but has been so enjoyed by so many people it would be sad to see it go away. If you or possibly a Boy Scout, Veterans Group, etc. could offer some assistance to keep the tradition going please just let Clem know.

A motion was made to adjourn the meeting, seconded, and unanimously approved. The meeting adjourned at 12:00 pm.

Historian's Corner



251 Dickson Avenue, Pittsburgh, PA
Home base of the TCA Quarterly, TCA Newsletter, and
TCA Directory in 1959

1959, yes, it was only 60 years ago. It was the fifth year of TCA. Dues were \$3.00. There were 5 Divisions:

Eastern, New England, Northern California, Pacific North-West, and Western. The June 6th meeting of Eastern Division was held at Collington Pleasure Club, north of Baltimore on Rt. 1. Were you there?

The TCQ editor, Lou Redman, reminds us that there is a lot of work involved in gathering, editing, and publishing the Q. Letters of congratulations and letters of bitterness are received. But, TCA renews its pledge "To make the Quarterly the finest tinsplate magazine ever published."

Thanks to Paul Pullen, and his crew, for their hard work and dedication to the Trolley!



Membership Moments ***by Bill Moss***

I am pleased to report that since October 1, 2019 we have gained 10 new members and 1 returning member. Unfortunately again, 1 member has passed away. Therefore, our current membership has increased from 227 to 237.

As a result of everyone's efforts to bring our 2019 dues up to date, there are only 35 members who have not paid their 2019 dues. As we begin 2020 this would be a good time to pay your 2019 dues. So far we have received 73 members' dues for 2020. Thank you. This is a good start for the New Year. You may use the Renewal Application in this Trolley to bring your 2019 dues up to date or to pay your 2020 dues. You may also stop by the Membership Table at our next show in Annapolis in February. I would like to thank everyone who includes a self-addressed, stamped envelope when mailing in your dues.

All of our members are invited to come out to our shows and planned events. This year the WB&A plans to once again go a Bowie Baysox Baseball game in Bowie, MD. We would also like to take other trips. If you have any suggestions for WB&A trips please contact any of the WB&A Board members with your suggestions.

In Memory of Robbie Schroeder

Robbie (Loose Caboose) Schroeder recently passed away after a brief illness. Robbie was a long time WB&A member who served as our "Parts Guy" at many WB&A train shows. He could also be found at other train events such as Greenberg Shows, Timonium Scale Show as well as many others in the Washington, Baltimore, Annapolis area. You could almost always find the part you needed in his many cabinets and bins. We will miss his knowledge and many contributions to the hobby.



WB&A CHAPTER 2020

MEMBERSHIP RENEWAL / NEW APPLICATION

Please return the following dues with **Self Addressed Stamped Envelope** and a check / money order payable to WB&A Chapter : **2020 dues are \$15**

Mail to: Bill Moss, 6929 Standish Drive, Hyattsville, MD 20784

Name _____

TCA # _____ WB&A # _____

Address _____ APT # _____

City _____ State _____ Zip Code _____

Phone number _____

E-Mail _____

Train Interest (what do you collect)

Do you have a layout Yes No

Do you plan attending a WB&A event this year yes no

Signature _____

Please contact Bill Moss at 301-322-9080 or trainman027@yahoo.com with any questions

Don't miss out on the chance to win the WB&A Drawing for a MTH Imperial Southern Crescent 4-6-2 PS4 Steam Engine with 7 Southern passenger cars.



Contact any WB&A BoD member for tickets, or send a check to Treasurer, Tom Salen, 112 Fardale St, SE, Vienna VA 22180.

Your tickets will be sent by return mail to you.

(1 for \$5 or 6 for \$25) Only 500 tickets are being sold.

Hobby Shops - Where Kids Young and Old Go for Fun

by Bob Gray, bgray5002@yahoo.com

There wasn't much better than walking through the door of my favorite hobby store?

People knew me there. I knew where things were. I leaned in to hear the conversations going on between customers and shop employees. I learned things every time I visited my favorite hobby shop. Each time I entered the store I looked for that item that I had been keeping my eye on to see if it had been sold and was relieved when I saw it safely perched behind the glass on a shelf.

It all started with Revell and AMT plastic model car kits in the 1950's. The kits included instructions and decals, which could be applied to the model to add logos, racing stripes, or flames. For better or worse I painted my creations, using small jars of paint, sometimes going to great lengths by airbrushing the models for added realism.



Next came the "control line" (U-Control) flying model aircraft. These planes were connected to the operator by a pair of lines, attached to a handle that worked the elevator of the model allowing it to be controlled in the pitch axis.

Then came the "slot car" craze -powered miniature autos (or other vehicles) which were guided by grooves or slots in the track on which they ran. Numerous trips to the hobby store were required to purchase wire for re-winding the tiny motors and getting just the right tires for navigating the commercial raceways we frequented instead of doing our homework.

As I meandered through these hobby phases, there was another hobby lurking in the background. One that predated the car kits, airplanes, and slot cars. The hobby shop always carried model trains.

Yes, those trains that I had played with as a youngster

and had put aside as I pursued other hobbies, were always there waiting for me. My brother never strayed from model trains. One of his models was featured in the Model Railroader magazine in August 1976 and he continues to this day a devotee to the hobby.

Together we travelled from our home in Silver Spring into D.C. to two terrific hobby shops, Corr's and Keene's, in Northwest Washington. Corr's was located at 9th and "G" Street and Keene's was tucked away around the corner on "G Place." Neither shop survives today. Both disappeared as revitalization of the area and the coming of the subway changed the neighborhood significantly.

The June 29, 2005 issue of Model Railroader featured interviews with former customers and employees of the two businesses. The following are quotes from that article.

Comments about Corr's included:

"I remember Corr's, that's where I bought my very first Athearn GP9 in the spring of 1968. Didn't go there regularly enough though to know when it disappeared, or why."

"I remember my first trip there and just as you come in the door on the right wall was a glass case full of steam and diesel locomotives. I stood there for a long time dreaming of them on my 4 x 8. Ah, the good ole days."

"I lived in Falls Church Va. in the 40's, and my Dad worked in DC. I used to visit Corr's every chance I got."

"In about '51, I bought a Union Pacific twin A-unit freight train set, to go with the early 40's or pre-war Lionel steam set I had - it had 3 passenger cars. I used to lust after the NYC or AT&SF twin A-unit sets, but they were out of reach price wise. Those engines had two electric motors in them!"

"I remember, Corr's had a 5 cylinder radial aircraft engine on the wall, at \$75 it was way out of reach."

"It was pretty much a full-line hobby shop. I recall the HO being in the back and on the right of the store."

"I worked at Corr's part time from 1966 to 1967 while I was in High school (Yorktown HS in Arlington, VA). I worked in the model airplane dept, but knew the people in trains. The head of trains was Phil. The head of model airplanes was Herb Clukey. The manager of the floor was Matt. I loved working there and have many fond memories. It was also my first job."

"I first saw Corr's in the late 50's. The last time I was in there in the 70's there were 2 halves to the store - I think they had joined 2 store fronts, but I don't know when."

The picture below shows Corr's Hobby Shop in the late 40's.



Comments about Keene's included:

"I used to go to Corr's in the 60's and early 70's but usually only if I had extra time to spend. My trips were to Keene's Model Railroad which was just down the street and around the corner on 'G Place'. His shop was not only just model railroads but was just HO scale."

"Clark Keene passed away a number of years ago and I was able to attend an estate sale at his home."

"Clark always treated this high school kid nicely when I visited. I remember saying to him how I'd love to run a shop just like him. He said that it wasn't as much fun as it looked and that I'd most likely not view model railroading in quite the same way as I did at the time. It (surprisingly) took a few years to actually understand his point."

"I remember going to Keene's by bus when I was a teenager. It was a long narrow store filled with model delights."

"My biggest memory of Keene's was of being fascinated by a built-up version of the Alexander Haunted House on display (I loved Charles Addams's cartoons in the New Yorker). I asked about it, and an older customer told me that it was much too difficult a kit for a youngster; that even he wouldn't attempt it. My hopes were dashed."

These quotes convey the flavor as well as the important role hobby shops have played in the lives of model railroaders.

Do you have memories of Corr's or Keene's that you'd be willing to share?

Perhaps you'd like to share thoughts on your favorite hobby store.

The WB&A website now has a "Comment Section" where you can easily enter your thoughts on any model train topic. I'd love to hear from you.

Go to <https://www.wba-tca-eastern.org/home.html>

Christmas Gardens

Cal Keene

Christmas garden origins came from German traditions that began centuries ago as a manger scene underneath a Yule tree known as a "putz". As immigration evolved from Germany to America, the traditions continued with the Christmas tree and manger scene under the tree as well as tiny villages including landscape and miniature people. Eventually, model trains were included which were becoming more available in the early 1900's. The Christmas gardens become more elaborate with several trains, villages with lights and animation. Each Christmas garden has a unique personality and traits from the designer(s) from the simple train around the tree to the most complicated and realistic set up. A Christmas garden (train layout) can be set up in an hour or worked on every day of the year and still be presentable, not many hobbies are this adaptable.



Keene Christmas gardens started with my uncle and my father in the late 1930's. They would start working on the gardens right after Thanksgiving with the goal of completion at Christmas and continue for a month or so until the "moms" made them take the garden down to get back their living rooms! My father featured 4 trains with about 5 cars each going around the Christmas garden and automatically switching and stopping and starting each other. When I was in grade school, he gave me his trains and I began elaborating on his ideas, learning platform construction, wiring, motor maintenance, relay control, etc. I have home movies and pictures of all of my uncle's and father's train gardens and still have the trains today. The fundamentals of the many skills learned and used in constructing, planning and running trains encouraged me to become an electrical engineer and eventually working at a large industrial complex in Baltimore for over fifty years.

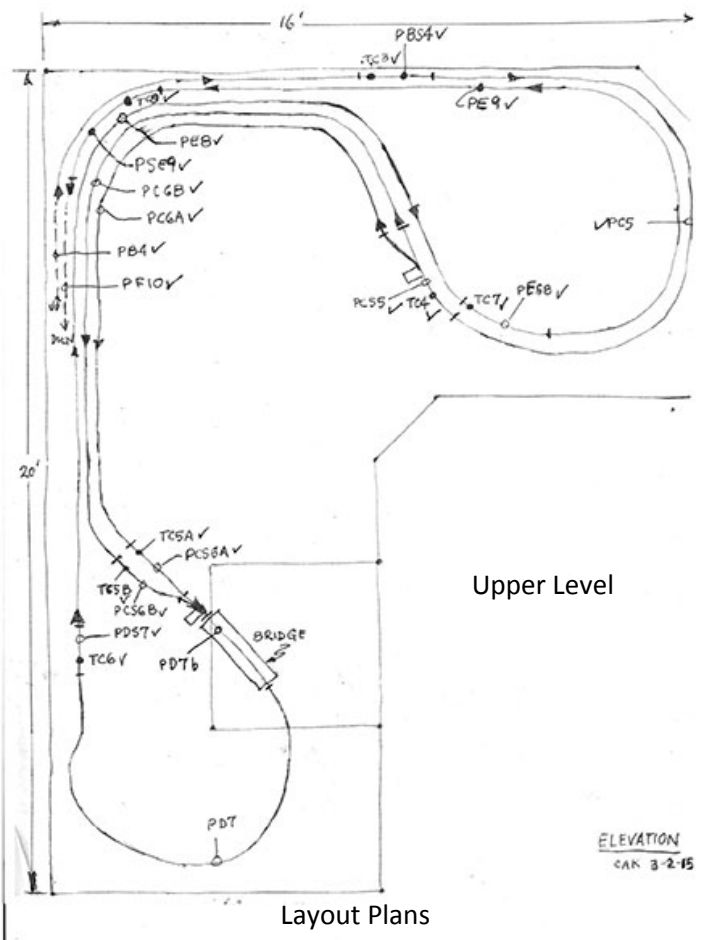
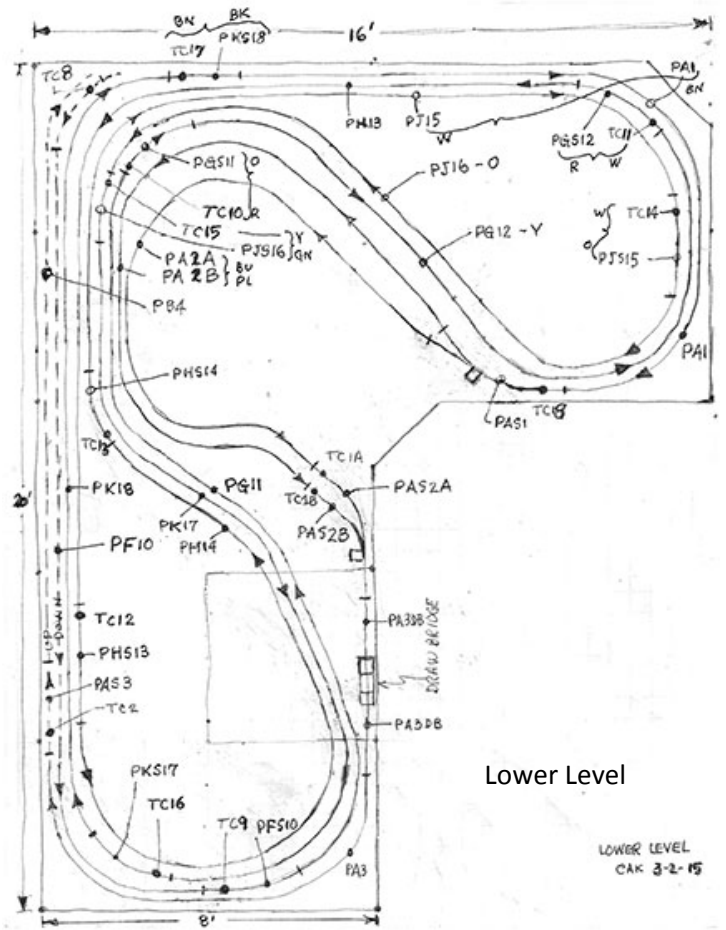
Today's Christmas garden is the culmination of improvements from the previous gardens. Typically what I do is place as much platform as can be squeezed into a



room....each layout is unique because of the room configuration....dimensions, access, etc. Then I place as much track as possible on the platform in a pattern that is all connected. Think of it as a large oval of track turned over



and over again. This has the trains passing each other in opposite directions (I like this effect) as they wind to the center and then come back out. Then a large tunnel hiding over 50% of the tracks disguises where the trains are located. The scenery lights and buildings are an afterthought and I squeeze them in where I can after the track work is completed. The table height is 24" (not the normal 30" to 36") to allow children to enjoy it at their level. The layout is "L" shaped 20' and 16' both 8' widths. The construction of this Christmas garden took over two



Layout Plans

years with an additional several months for trouble shooting. The trains are controlled by 20 relays blocks each about 25 feet in length automatically slowing trains down, speeding them up and stopping them. (Instead of controlling a gate with a train, I have the train control a relay). I use trains from different era's and technology and use many techniques (weight, wiring motors in series, diodes, etc.) which keeps them performing roughly at the same speed (a difficult task). The relay control keeps the faster trains in slow speed and the slower trains in fast mode. I use trains from Lionel, Williams and Mike's Train House (Proto 2). Presently, the garden has about 500 feet of track (all "072" tubular) on the main line with ten trains each about sixteen feet long following each other over the "maze". Two of the trains consist of all Bethlehem Steel cars (where I was employed for over 50 years) and there are many more to add!



A new room has been completed over a two car garage with holes through the walls for tunnels. This will expand the layout size to triple what it is now and attaching another 500 feet of main line making it possible to run over 20 trains at one time on the same track. It will have a different feel, not a snow scene. One of my goals is to run all the scale trains that Lionel trains produced starting in 1934 to around 1950. Also, the extended garden will include many of the operating accessories that Lionel built, have an interactive part for visitors especially children, and have some standard gage trains running (almost twice the size of O gauge and made from 1920 to 1940).

My enjoyment comes in sharing my hobbies with others and the motto of train collectors...."he who dies with the most trains wins!"



Inaugural BOWIE Train Show

Kudos everyone! What a wonderful first effort to plan, facilitate and participate in the fall Bowie Train Show. An number of folks stepped up to volunteer their time and talents to ensure the show's success but it was the overwhelming participation of the membership that solidified the outcome. Initial hopes were that we would conservatively attract 100 or so people to attend the Route 50/301 event so when we far exceeded that mark, the committee was overjoyed. In the end, the chapter, the table-holders the Knights of Columbus and the public appeared to be very happy with the show. As always, we could use more members in the planning and preparation phase and with more than 50% of the table holders indicating that they want to return next year, the work "should" be lighter. If you are interested, please reach out to Karl Taschenberger, Brian Taschenberger or Skip Lee for more information on how to get involved.

Please see the many awesome photos that member Bob Gray has included in this edition of the Trolley.

Happy Holidays Everyone and Enjoy the Season.

Best,

Skip Lee, Committee Co-Chair.





WB&A BoD Meeting

When: To be announced
Where: To be announced

Time: 9:00 a.m.-1:00 p.m.

Come and join the WB&A Board of Directors

Agenda: Officer reports, Eastern
Division report, Upcoming
Events, Open Discussion.

Members are welcome as guests



Upcoming Events

Feb 8-9, 2020	Worlds Greatest Hobby Show, Dulles Expo Center, Chantilly, VA.
Feb 15 - 16, 2020	Greenberg's Great Train and Toy Show, Wilmington, DE
Feb 23, 2020	WB&A Train Show, Annapolis, MD
Apr. 4 - 5, 2020	Roundhouse Train Meet, B&O Museum, Baltimore
Apr. 24 - 25, 2020	Eastern Div. York Meet, York Fairgrounds
May 2 - 3, 2020	Great Scale Model Train Show, MD. State Fairgrounds
Jun. 20-28, 2020	TCA Convention
Oct. 23 - 24, 2020	Eastern Div. York Meet, York Fairgrounds

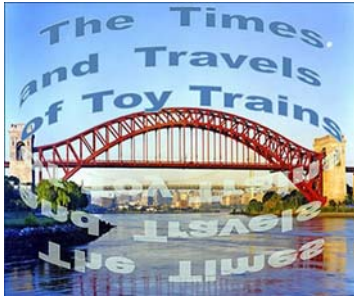


Share Your Memories

Please send any train-related articles, stories, and/or print-ready photos for consideration in any upcoming publication of "The Trolley" or on the Chapter Web Site. Send via e-mail to:

pullenp@gmail.com

**DEADLINE FOR SUBMITTING ARTICLES
FOR Apr.-Jun. 2020 TROLLEY
March 10, 2020**



Newly published book. Individual entries for over 300 toy train manufacturers, over 100 historical events, Greenberg publications, hobby shops, TCA history and more! Records are in

timeline format beginning in the early 1800's and going through 2024! Add your individual personal events.

Great gift, only \$19.54. "The Times and Travels of Toy Trains" 2nd Edition, October, 2019

To purchase contact Carol McGinnis, HE95-41066, carol.mcginis74@verizon.net or 410-336-8522.

Woody's Train Restoration & Repair offers professional repair and restoration services for post war Lionel trains. We specialize in steam locomotives and tenders. We have the ability to repaint and rubber stamp locomotive cab numbers. We have full repair shop and can rebuild smoke units, e-units, repair whistles and rewire your locomotive to almost new. We just recently added a Lionel press and can change out broken diesel and steamer wheels and perform various other repairs. If your train needs some TLC just e-mail us

(deutsche_marine@hotmail.com) with your needs and we most likely can help you. (Here is a sample Woody has restored back to greatness.)



Thomas Love
Richard Oberender
George Templeman
Lynne Cook
Maurice Brown
Stephen Leavel
Cody Leavel
Donald Leavel
Harry Belsinger
Michael Notarianni

Look who just joined WB&A!!!

Cambridge, MD
Middle River, MD
Huntingtown, MD
Essex, MD
Temple Hill, MD
Harrington, DE
Rehobeth Beach, DE
Rehobeth Beach, DE
Fallston, MD
Burke, VA

RETURNING MEMBER!!!

Tom Petkunas Dunkirk, MD



**Do you use
Facebook?**

If so, try out our facebook page

<https://>

www.facebook.com/wba.chaptertca



Toy Trains & Collectibles
7216 New Market Court
Manassas VA 20109
toytrainsandcollectibles.com
571-379-5497

Hope & Dan Danielson
dandhtrains@comcast.net

BUY - SELL - PARTS - SERVICE

Engine House Hobbies

enginehousehobbies.net

Trains and more serving your creative needs

A Releasing Your Unlimited Creativity Application

301-590-0816
1-A East Diamond Ave

ken@enginehousehobbies.net
Gaithersburg, MD 20877

ATTENTION MEMBERS!
Your assistance is needed!

As you may know, the WB&A Chapter of the TCA hosts an early Spring Train Show on the last weekend of February. Year after year, the same five or so people step up to organize and facilitate the event. With almost three months to go before we open the doors to the public, we are asking more of you to volunteer some time to assist and support the production. We have already received 95% of the table holder reservations so you are not going to have to work on soliciting participation, but we could use help in many other capacities. Here's a comprehensive list:

Advertising on local and regional news outlets to include Social Media and Print Media. Have a connection to a newspaper or a Face Book account, you can help!

Post flyers in strategic locations – print five flyers and post them on your local grocery store or church announcement board. The ad is on the last page of this newsletter. Consider making copies and share with others.

Tell a friend! Last February, we signed up 14 new members to the club because members like you brought a friend with you to the Train Show. Face to Face works every time!

Assist setting up the Annapolis Elk's Showroom on Saturday afternoon February 22nd beginning at 4:00pm. We have floors to clean, 80 tables and chairs to set up, and logistics to take care of the night before the show. We start at 4:00pm

Offer to assist our table holders with moving in their items on Saturday evening or Sunday morning. We let Table Holders into the hall beginning at 5:00pm on Saturday evening and 6:00am on Sunday morning. Any help you can provide is greatly appreciated.

Thank you for considering any of these needs. Perhaps you have another way to support the show. Don't be shy. Please share your idea. Also, we are looking to assemble a committee that will take on the responsibilities of hosting a show in the Northern Virginia area. Our membership extends from Baltimore to Washington and east to Annapolis. We want our entire membership to feel represented and supported. If you are interested in learning more about what it entails, please reach out to President Tom or to Show Co-Chair Skip for more information.

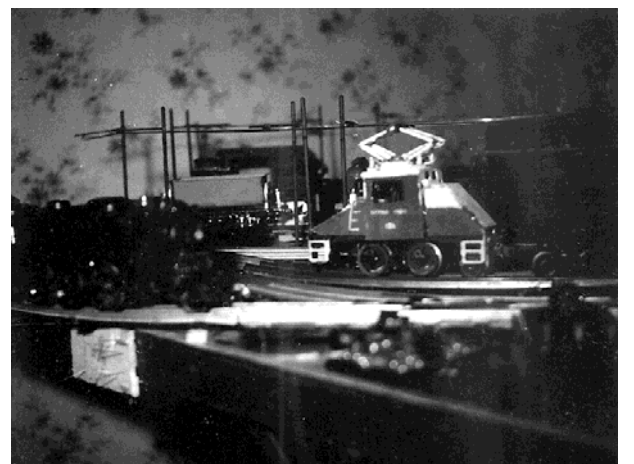
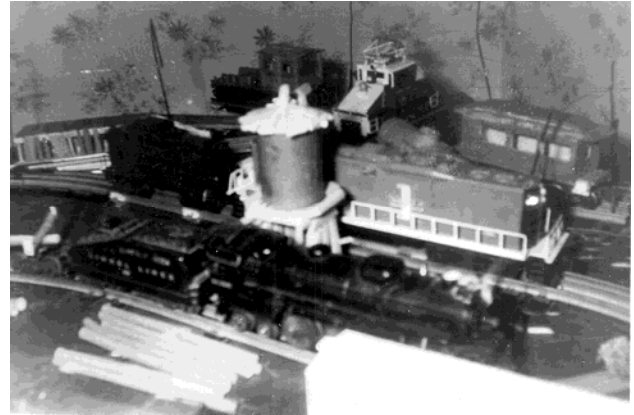
Have a Great Holiday!

Skip Lee

chessietrain@comcast.net

443-618-6866

Buffalo Creek Railroad Circa 1963



MARK YOUR CALENDARS

Plenty of fun for the whole family including:

- Trains for sale including Lionel, MTH, K-Line, American Flyer, K-Line, MARX, Bachmann, etc.
- G, O, S, HO, Standard Gauge (old and new) (inventory subject to change).
- Pre-War, Post-War, Modern Trains Available.
- Modular Layout by the National Capitol Trackers.
- Train Repairs and Parts
- Door Prizes
- Free Parking
- Free Train Appraisals
- Lunch provided by the Elks Lodge

Annapolis Train Show

February 23, 2020

Annapolis Elks Lodge
2 Pythian Drive
Edgewater, MD

10:00 AM To 3:00 PM

9:00 a.m. to 10:00 am. Exclusive access for members.



For information, Contact Skip Lee (ocbp55@comcast.net) or 443-618-6866
Tables available beginning January 1, 2018. Don't miss out on the only Annapolis Area Show.

Lionel O Scale LionScale Seaboard Air Line TOFC

American Flyer 5 Gauge Budweiser Woodside Reefer

Traditional O Naval Air Station Jacksonville Blue Angels Car

MTH O Scale Florida East Coast Flat with Containers

Traditional O Department 56 Boxcar

TCA'S 2020 CONVENTION CARS

These may be "2020" convention cars, but you don't need perfect vision to see these great deals!

14TH NATIONAL CONVENTION
TRAIN COLLECTORS ASSOCIATION SOUTHERN DIVISION
June 27-28, 2020 - Jacksonville, FL



WB&A CHAPTER - TCA ANNAPOLIS TOY TRAIN SHOW *Sunday, February 23, 2020*

**SHOW Opens at 10:00am & Closes at 3:00pm
(Show opens at 9:00 am for WB&A members)**

Admission is \$5.00 with the exception of:

Children Under 12, the Military, and WB&A Members Admitted Free.

At the Annapolis Elks Lodge!!

2 PYTHIAN DRIVE EDGEWATER, MD 21037

THE ONLY TRAIN MEET IN THE ANNAPOLIS AREA

Directions: Take Route 50 eastwards Annapolis. Take Exit 22, Aris T. Allen Blvd / MD 665 towards Riva Rd. Go about 1 mile and take the exit for Route 2 (Solomon's Island Rd) South towards Edgewater. Stay to the left on the exit ramp. When you come off the exit ramp, proceed straight across Route 2 onto Pythian Drive, and immediately bear around to the left. The lodge is on the left.

Plenty of fun for the whole family including:

The National Capital Trackers Modular Train Layout including Thomas

The vast majority of Trains for sale will include Lionel, MTH, K-Line, American Flyer, etc. There will be Standard Gauge, O Scale, as well as some HO, and N gauge available.

There will be old and new trains and train accessories for sale.

Parts available with many vendors offering Train Appraisals

Door Prizes

Free Parking

Delicious Food provided by the Annapolis Elks Lodge

Enjoy the sounds of operating Trains. Pick up and thing or two. Come out and make it a great day.

