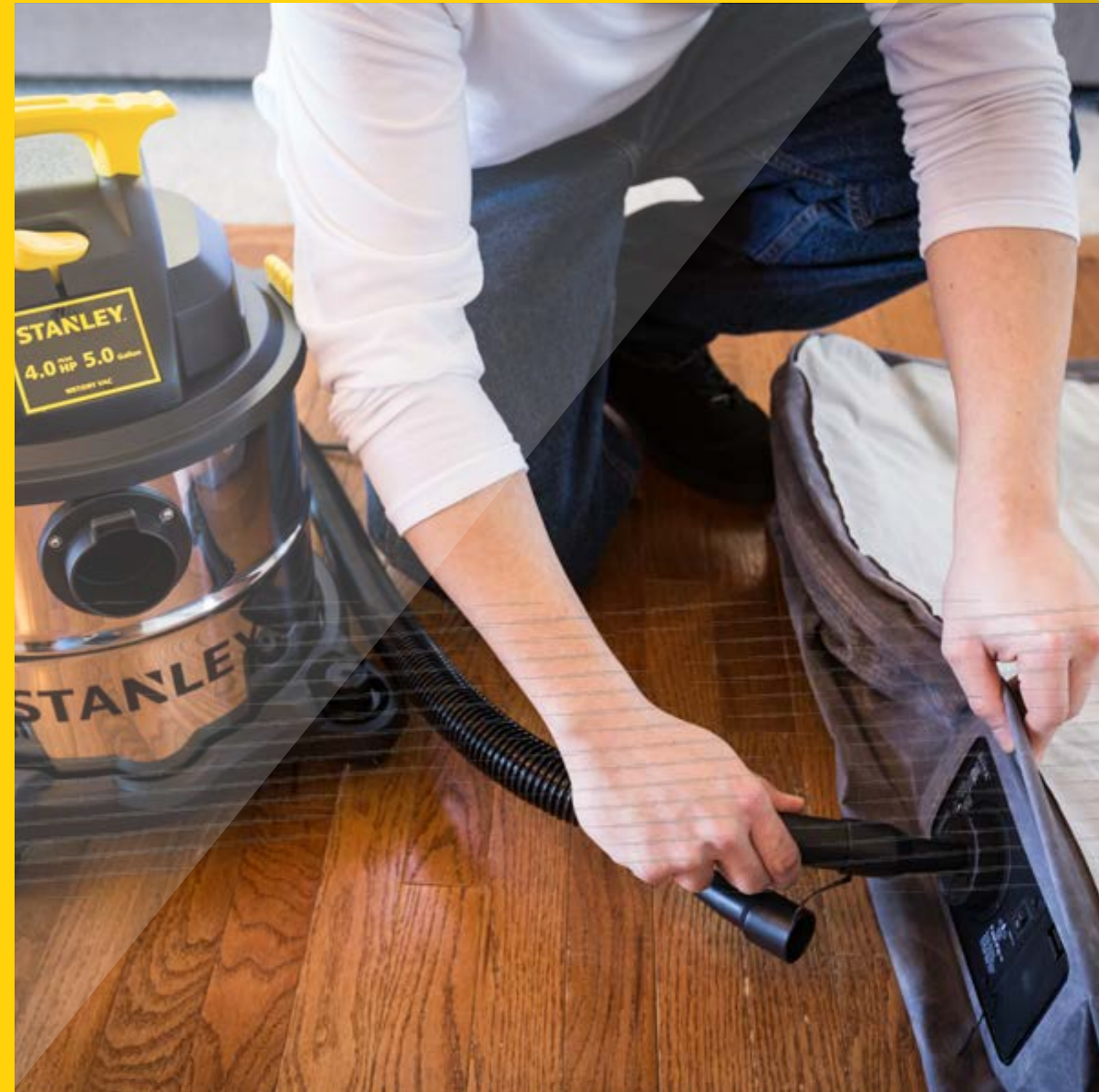


STANLEY®

WET/DRY VACUUM

STANLEY VAC - MAKE SOMETHING GREAT™



Stanley® and STANLEY are trademarks of Stanley Black & Decker, Inc., or its affiliates and are used under license

CJP Marketing Pte Ltd
2 Gambas Crescent #09-14 Nordcom II
Singapore 757044
Email: sales@cjpl.com

Stanley's family of licensed product delivers the same great quality and innovation. For more information on these Stanley licensed vacuums, please call in 1-888-899-0146. E-mail: info@altonindustries.com

STANLEY®

MAKE SOMETHING GREAT™



Always wear safety goggles.
© 2019 The Stanley Tools, Inc.
New Britain, CT 06053 U.S.A

<http://www.altonindustries.com>

STANLEY®

TOOLS THAT GET THE JOB DONERIGHT

Every Stanley Vacuum in this catalogue is created to help you work better, smarter, faster.our Discovery Teams work side-by-side with real tradesmen every day to see how you work and identify ways to help you improve your performance.

Because we understand that there's nothing better than knowing you've done a great job, and knowing that you are respected for it by the people whose opinion really matters- the guys you work with.



CONTENTS



01

PORTABLE POLY SERIES

- 01 12 Liter toolbox wet/dry vac
- 03 15 Liter workshop wet/dry vac
- 04 15 Liter toolbox wet/dry vac
- 05 15 Liter toolbox wet/dry vac
- 06 19 Liter hang up wet/dry vac

02

PORTABLE POLY SERIES

- 07 3.8 Liter 12V DC wet/dry vac
- 08 3.8 Liter wet/dry vac
- 08 3.8 Liter wet/dry vac
- 08 7.5 Liter wet/dry vac
- 09 9.5 Liter wet/dry vac
- 10 9.5 Liter wet/dry vac
- 10 9.5 Liter wet/dry vac
- 10 12 Liter wet/dry vac
- 12 15 Liter wet/dry vac
- 12 17 Liter wet/dry vac
- 12 17 Liter wet/dry vac

NEW

03

PRO POLY PLUS SERIES

- 13 23 Liter wet/dry vac
- 15 19 Liter wet/dry vac
- 15 30 Liter wet/dry vac
- 15 30 Liter wet/dry vac
- 16 38 Liter wet/dry vac
- 16 38 Liter wet/dry vac
- 16 45 Liter wet/dry vac

04

INDUSTRIAL POLY SERIES

- 17 30 Liter wet/dry vac
- 18 45 Liter wet/dry vac

05

PORTABLE STAINLESS STEEL SERIES

- 19 12 Liter wet/dry vac
- 20 15 Liter wet/dry vac
- 20 15 Liter wet/dry vac
- 20 19 Liter wet/dry vac

06

PORTABLE STAINLESS STEEL PLUS SERIES

- 21 12 Liter wet/dry vac
- 22 15 Liter wet/dry vac
- 22 19 Liter wet/dry vac
- 22 19 Liter wet/dry vac

07

PRO STAINLESS STEEL SERIES

- 23 19 Liter wet/dry vac
- 24 23 Liter wet/dry vac
- 24 23 Liter wet/dry vac
- 24 30 Liter wet/dry vac
- 25 30 Liter wet/dry vac
- 25 30 Liter wet/dry vac
- 25 38 Liter wet/dry vac
- 26 38 Liter wet/dry vac
- 26 61 Liter wet/dry vac
- 26 61 Liter wet/dry vac

08

INDUSTRIAL STAINLESS STEEL SERIES

- 28 30 Liter wet/dry vac
- 28 30 Liter wet/dry vac
- 28 38 Liter wet/dry vac
- 30 45 Liter wet/dry vac
- 30 53 Liter wet/dry vac
- 30 61 Liter wet/dry vac

09

HANG UP SERIES

- 31 13 Liter stainless steel wet/dry vac
- 32 17 Liter portable wet/dry vac
- 32 17 Liter stainless steel wet/dry vac
- 32 17 Liter portable wet/dry vac

10

BUCKET HEAD & ASH TANK & ASH VAC

- 34 15 Liter peak hp bucket head
- 34 15 Liter ash vac
- 34 15 Liter ash tank

11

VACUUM FILTERS

- 36 Filter
- 37 Cartridge Filter
- 37 1-1/4" Accessories
- 39 1-7/8" Accessories
- 41 2-1/2" Accessories

PORTABLE POLY SERIES



WET / DRY VACUUM CLEANER

Makes cleaning up your car easy. It cleans up both liquid spills and dry debris, and the removable crevice tool allows you to vacuum corners and hard-to-reach narrow spaces, this multi-surface vacuum cleaner.

WASHABLE FILTER

It's lightweight, compact and features a washable filter as well as an extension for those hard-to-reach places, empty your carpet of grime without emptying your wallet of cash with this great deal.

3 GALLON TOOLBOX WET/DRY VACUUM

STANLEY

SL19910P-3

Large water-resistant on/off switch

Convenient handle makes it easy to carry for any cleanup job

Cord wrap

Powerful blower port instantly converts vacuum to power blower



NEW



Tank Size	Power	Sealed Pressure	Airflow	Electrical Rating	Power Cord
12 Liters	1000W	12KPa	43L/s	230V/50Hz	1.8m

STANDARD ACCESSORIES

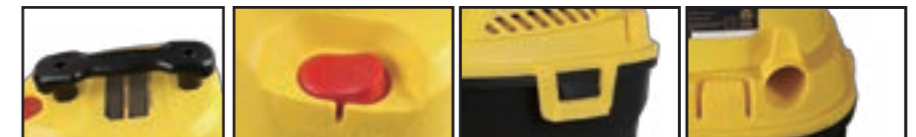


- Lightweight & compact, with a handle on top for easy carrying.
- On-board accessories storage.
- Rear blower port.

- High performance motor provides maximum power.
- Convenient, built-in power cord hook.
- Large switch button with waterproof design for safe & easy operation.

INCLUDED:

- 1-1/4" x 4' hose (20-1300) · Gulper nozzle (13-1588) · Crevice nozzle (13-1513) · Foam filter (25-1202)
- Reusable dry filter with clamp ring (25-1201)



4 GALLON WORKSHOP WET/DRY VACUUM

STANLEY

SL19905P-4



NEW



Tank Size	Power	Sealed Pressure	Airflow	Electrical Rating	Power Cord
15 Liters	1000W	12.5KPa	34L/s	230V/50Hz	6m

INCLUDED ACCESSORIES



- Lightweight & compact, with a handle on top for easy carrying.
- Swiveling casters provide convenient multidirection maneuverability.
- Rear blower port.
- High performance motor provides maximum power.
- Convenient, built-in power cord hook.
- Large switch button with waterproof design for safe & easy operation.

INCLUDED :
 · Gulper nozzle (13-1588) · Crevice nozzle (13-1508) · 2 Extension wands (13-1502A) · Foam filter (20-1200A)
 · Reusable and washable cartridge filter (08-2566B) · 6 ft X 1-1/4 in hose (13-3300) · Floor nozzle (13-1570)



4 GALLON TOOLBOX WET/DRY VACUUM

STANLEY

SL19904P-4



NEW



Tank Size	Power	Sealed Pressure	Airflow	Electrical Rating	Power Cord
15 Liters	1000W	12.5KPa	34L/s	230V/50Hz	6m

STANDARD ACCESSORIES



- Lightweight & compact, with a handle on top for easy carrying.
- On-board accessories storage.
- Rear blower port.
- High performance motor provides maximum power.
- Convenient, built-in power cord hook.
- Large switch button with waterproof design for safe & easy operation.

INCLUDED :
 · Gulper nozzle (13-1588) · Crevice nozzle (13-1508) · 2 Extension wands (13-1502A) · Foam filter (20-1200A)
 · Reusable and washable cartridge filter (08-2566B) · 6 ft X 1-1/4 in hose (13-3300) · Floor nozzle (13-1570)



4 GALLON WET/DRY VACUUM

STANLEY

SL19957P-5



NEW



Tank Size	Power	Sealed Pressure	Airflow	Electrical Rating	Power Cord
15 Liters	1200W	17KPa	35L/s	230V/50Hz	5m

STANDARD ACCESSORIES



- Lightweight & compact, with a handle on top for easy carrying.
- On-board accessories storage.
- Rear blower port.
- High performance motor provides maximum power.
- Convenient, built-in power cord hook.
- Large switch button with waterproof design for safe & easy operation.

INCLUDED:

- Gulper nozzle (13-1588) · Crevice nozzle (13-1513) · Extension wands (25-1044) · Foam filter (20-1200A)
- Reusable and washable cartridge filter (08-2551) · 6 ft X 1-1/4 in hose (25-1206) · Floor nozzle (13-1571)
- Disposable filter bag (25-1238)



5 GALLON HANG UP WET/DRY VACUUM

STANLEY

SL19906P-5H



NEW



Tank Size	Power	Sealed Pressure	Airflow	Electrical Rating	Power Cord
19 Liters	1000W	12.5KPa	34L/s	230V/50Hz	6m

STANDARD ACCESSORIES



- Lightweight & compact, with a handle on top for easy carrying.
- On-board accessories storage.
- Rear blower port.
- High performance motor provides maximum power.
- Convenient, built-in power cord hook.
- Large switch button with waterproof design for safe & easy operation.

INCLUDED:

- Gulper nozzle (13-1588) · Crevice nozzle (13-1508) · 3 Extension wands (25-1205A) · Foam filter (20-1200A)
- Reusable and washable cartridge filter (08-2566B) · 20 ft X 1-1/4 in hose (25-1227) · Floor nozzle (13-1570)
- Disposable filter bag (19-3100)



PORTABLE POLY SERIES



- Lightweight & compact, with a handle on top for easy carrying.
- On-board accessories storage.
- High performance motor provides maximum power.
- Convenient, built-in power cord hook.
- Large switch button with waterproof design for safe & easy operation.

SL19125DC



INCLUDED :

- 1-1/4 " x 4 ' hose (25-1203) · Gulper nozzle (13-1588) · Crevice nozzle (13-1508) · Foam filter (25-1202)
- Reusable dry filter with clamp ring (25-1201)



Tank Size	Power	Sealed Pressure	Airflow	Electrical Rating	Power Cord
3.8 Liters	/	3.5KPa	/	12V*DC	5m

SL19125P



INCLUDED :

- 1-1/4 " x 4 ' hose (25-1203) · Gulper nozzle (13-1588) · Crevice nozzle (13-1508) · Foam filter (19-1600)
- Reusable dry filter with clamp ring (25-1201) · Wall mount (25-1214)



*Wall mount not included with the (SL18125P-1)

Tank Size	Power	Sealed Pressure	Airflow	Electrical Rating	Power Cord
3.8 Liters	600W	13KPa	23L/s	230V/50Hz	1.8m

SL19101P-1H



INCLUDED :

- 1-1/4 " x 4 ' hose (13-3306) · Gulper nozzle (13-1588) · Crevice nozzle (13-1508) · Foam filter (20 -1200A)
- Reusable dry filter with clamp ring (25-1200) · Wall mount (25-1215)



Tank Size	Power	Sealed Pressure	Airflow	Electrical Rating	Power Cord
3.8 Liters	600W	13KPa	23L/s	230V/50Hz	1.8m

SL19127P



INCLUDED :

- 1-1/4 " x 4 ' hose (25-1203) · Gulper nozzle (13-1588) · Crevice nozzle (13-1508) · Foam filter (19-1600)
- Reusable dry filter with clamp ring (25-1201) · Wall mount (25-1214)



Tank Size	Power	Sealed Pressure	Airflow	Electrical Rating	Power Cord
7.5 Liters	600W	13KPa	23L/s	230V/50Hz	1.8m

PORTABLE POLY SERIES



- Lightweight & compact, with a handle on top for easy carrying.
- Swiveling casters provide convenient multi-direction maneuverability.
- On-board accessories storage.
- High performance motor provides maximum power.
- Convenient, built-in power cord hook.
- Large switch button with waterproof design for safe & easy operation.
- Rear blower port.

SL19128P



INCLUDED :

- 1-1/4 " x 5 ' hose (25-1204) · Gulper nozzle (13-1570) · Crevice nozzle (13-1508) · Foam filter (19-1600)
- Reusable dry filter with clamp ring (25-1201) · Floor brush (13-1505A) · 3 Extension wands (25-1205A)
- Disposable filter bag (25-1228)



Tank Size	Power	Sealed Pressure	Airflow	Electrical Rating	Power Cord
9.5 Liters	750W	13KPa	1800L/min	230V/50Hz	3m

SL19134P



INCLUDED :

- 1-1/4 " x 4 ' hose (25-1203) · Gulper nozzle (13-1588) · Crevice nozzle (13-1508) · Foam filter (20-1100)
- Reusable dry filter with clamp ring (20-1200A)



Tank Size	Power	Sealed Pressure	Airflow	Electrical Rating	Power Cord
9.5 Liters	750W	13KPa	28L/s	230V/50Hz	1.8m

SL19135P



INCLUDED :

- 1-1/4 " x 5 ' hose (25-1204) · Gulper nozzle (13-1588) · Crevice nozzle (13-1508) · Foam filter (25-1202)
- Reusable dry filter with clamp ring (25-1201) · Floor nozzle (13-1570) · 3 Extension wands (25-1205A)
- Disposable filter bag (25-1228)



Tank Size	Power	Sealed Pressure	Airflow	Electrical Rating	Power Cord
9.5 Liters	750W	13KPa	28L/s	230V/50Hz	3m

SL19202P-3B



INCLUDED :

- 1-1/4 " x 5 ' hose (13-3302A) · Gulper nozzle (13-1588) · Crevice nozzle (13-1508) · Foam filter (20-1200A)
- Reusable dry filter with clamp ring (20-1100) · Floor nozzle (13-1570) · 3 Extension wands (25-1205A)
- Inflation kit (13-4001)



Tank Size	Power	Sealed Pressure	Airflow	Electrical Rating	Power Cord
12 Liters	750W	13KPa	28L/s	230V/50Hz	3m

PORTABLE POLY SERIES



WET / DRY VACUUM CLEANER

STANLEY Brand wall mount vac can be used for wet or dry pick up in laundry room, craft room, garages, basements and child play room. This unit can also be removed from the wall for portability. Wall mountable to free up floor space 20-ft hose for add reach wet or dry vacuuming durable plastic tank.

SL19301P-4B



INCLUDED :

- 1-1/4 " x 4 ' hose (13-3304) · Gulper nozzle (13-1588) · 3 Extension wands (25-1205A) · Foam filter (20-1200A)
- Reusable dry filter with clamp ring (20-1100) · Disposable filter bag (25-1238) · Inflation kit (13-4001)



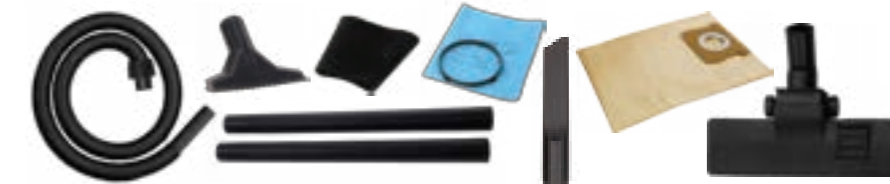
Tank Size	Power	Sealed Pressure	Airflow	Electrical Rating	Power Cord
15 Liters	850W	12.5KPa	29L/s	230V/50Hz	3m

SL19130P



INCLUDED :

- 1-1/4 " x 5 ' hose (25-1204) · Gulper nozzle (13-1588) · 2 Extension wands (13-1502A) · Foam filter (25-1202)
- Reusable dry filter with clamp ring (25-1201) · Disposable filter bag (25-1230) · Crevice nozzle (13-1508)
- Floor brush (13-1505A)



Tank Size	Power	Sealed Pressure	Airflow	Electrical Rating	Power Cord
17 Liters	900W	16KPa	25L/s	230V/50Hz	3m

SL198138P



INCLUDED :

- 1-1/4 " x 5 ' hose (25-1204) · Gulper nozzle (13-1588) · 2 Extension wands (13-1502A) · Foam filter (20-1200A)
- Reusable dry filter with clamp ring (20-1100N) · Disposable filter bag (25-1230) · Crevice nozzle (13-1508)
- Floor brush (13-1570)



Tank Size	Power	Sealed Pressure	Airflow	Electrical Rating	Power Cord
17 Liters	750W	13KPa	28L/s	230V/50Hz	3m

PRO POLY PLUS SERIES



WET / DRY VACUUM CLEANER

STANLEY Brand wall mount vac can be used for wet or dry pick up in laundry room, craft room, garages, basements and child play room. This unit can also be removed from the wall for portability. Wall mountable to free up floor space 20-ft hose for add reach wet or dry vacuuming durable plastic tank.

6 GALLON PORTABLE WET/DRY VAC

STANLEY

SL19402P-6A

Large water-resistant on/off switch

Convenient design make all the accessory stored easily

Convenient handle makes it easy to carry for any cleanup job

Powerful blower port instantly converts vacuum to power blower



Tank Size	Power	Sealed Pressure	Airflow	Electrical Rating	Power Cord
23 Liters	1100W	16KPa	35L/s	230V/50Hz	3m

STANDARD ACCESSORIES



- Lightweight & compact, with a handle on top for easy carrying.
- Swiveling casters provide convenient multi-direction maneuverability.
- On-board accessories storage
- High performance motor provides maximum power.
- Convenient, built-in power cord hook.
- Large switch button with waterproof design for safe & easy operation.
- Rear blower port.

INCLUDED:

- 1-1/4" x 6' hose (13-3300) · Gulper nozzle (13-1588) · 2 Extension wands (13-1502) · Foam filter (19-1600)
- Reusable dry filter with clamp ring (19-1500) · Disposable filter bag (19-3100) · Crevice nozzle (13-1508)
- Floor nozzle (13-1570)

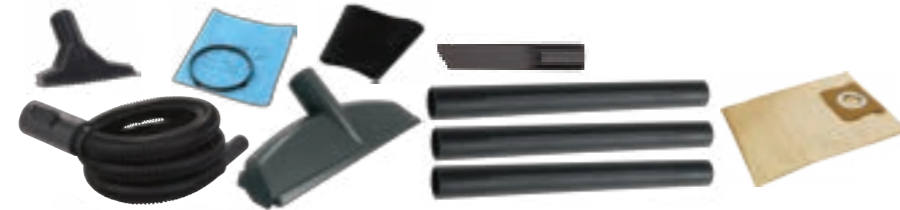


SL19402P-5A



INCLUDED:

- 1-1/4" x 5' hose (25-1204) · Gulper nozzle (13-1588) · 3 Extension wands (25-1205A) · Foam filter (19-1600)
- Reusable dry filter with clamp ring (19-1500) · Disposable filter bag (19-3100) · Crevice nozzle (13-1508)
- Floor nozzle (13-1570)



Tank Size	Power	Sealed Pressure	Airflow	Electrical Rating	Power Cord
30 Liters	1100W	16KPa	35L/s	230V/50Hz	3m

SL19017P



INCLUDED:

- 1-1/4" x 6' hose (13-1504) · Gulper nozzle (13-1588) · 2 Extension wands (13-1502A) · Floor nozzle (13-1570)
- Disposable filter bag (13-1522) · Crevice nozzle (13-1508) · Cartridge filter (19-1800)



Tank Size	Power	Sealed Pressure	Airflow	Electrical Rating	Power Cord
30 Liters	1200W	16KPa	24L/s	230V/50Hz	4.8m

SL19402P-8A



INCLUDED:

- 1-1/4" x 6' hose (13-1504) · Gulper nozzle (13-1588) · 2 Extension wands (13-1502A) · Floor nozzle (13-1570)
- Disposable filter bag (13-1519) · Crevice nozzle (13-1508) · Cartridge filter (08-2566B)



Tank Size	Power	Sealed Pressure	Airflow	Electrical Rating	Power Cord
30 Liters	1100W	16KPa	35L/s	230V/50Hz	4.8m

SL19191P



INCLUDED:

- 1-7/8" x 6' hose (19-1100) · Utility nozzle (19-1300) · 2 Extension wands (19-1200) · Floor nozzle (19-1900)
- Cartridge filter (08-2566B) · Disposable filter bag (19-3101) · Crevice nozzle (19-1400)



Tank Size	Power	Sealed Pressure	Airflow	Electrical Rating	Power Cord
38 Liters	1000W	12KPa	38L/s	230V/50Hz	3m

SL19701P-10A



INCLUDED:

- 1-7/8" x 6' hose (19-1100) · Utility nozzle (19-1300) · 2 Extension wands (19-1200) · Floor nozzle (19-1900)
- Cartridge filter (08-2566B) · Disposable filter bag (19-3100) · Crevice nozzle (19-1400)
- Garden hose adapter (25-1213)



Tank Size	Power	Sealed Pressure	Airflow	Electrical Rating	Power Cord
38 Liters	1200W	18KPa	40L/s	230V/50Hz	3m

SL19199P



INCLUDED:

- 1-7/8" x 6' hose (19-1100) · Utility nozzle (19-1300) · 2 Extension wands (19-1200) · Floor nozzle (19-1900)
- Cartridge filter (08-2566B) · Disposable filter bag (19-3101) · Crevice nozzle (19-1400)



Tank Size	Power	Sealed Pressure	Airflow	Electrical Rating	Power Cord
45 Liters	1200W	18KPa	40L/s	230V/50Hz	4.8m

INDUSTRIAL SERIES

STANLEY

SL19401P-8A

Large water-resistant on/off switch

Convenient flip-up handle makes it easy to carry for any cleanup job

Convenient design make all the accessory stored easily

Swiveling casters for ease of movement in all directions



Tank Size	Power	Sealed Pressure	Airflow	Electrical Rating	Power Cord
30 Liters	1200W	18KPa	40L/s	230V/50Hz	4.8m

INCLUDED ACCESSORIES



- Lightweight & compact, with a handle on top for easy carrying.
- Swiveling casters provide convenient multi-direction maneuverability.
- On-board accessories storage.
- High performance motor provides maximum power.
- Convenient, built-in power cord hook.
- Large swith button with waterproof design for safe & easy operation.
- Rear blower port.

INCLUDED :

- 2-1/2 " x 6 ' hose (08-2536) · Crevice nozzle (08-2506) · 2 Extension wands (08-2502) · Utility nozzle (08-2503)
- Floor brush (08-2505) · Disposable filter bag (19-3102) · Cartridge filter (08-2566B)



INDUSTRIAL SERIES

STANLEY

SL19501P-12A

Large water-resistant on/off switch

Convenient flip-up handle makes it easy to carry for any cleanup job

Convenient design make all the accessory stored easily

Swiveling casters for ease of movement in all directions



Tank Size	Power	Sealed Pressure	Airflow	Electrical Rating	Power Cord
45 Liters	1200W	18KPa	46L/s	230V/50Hz	4.8m

STANDARD ACCESSORIES



- Lightweight & compact, with a handle on top for easy carrying.
- Swiveling casters provide convenient multi-direction maneuverability.
- On-board accessories storage.
- High performance motor provides maximum power.
- Convenient, built-in power cord hook.
- Large swith button with waterproof design for safe & easy operation.
- Rear blower port.

INCLUDED :

- 2-1/2 " x 6 ' hose (08-2536) · Crevice nozzle (08-2506) · 2 Extension wands (08-2502) · Utility nozzle (08-2503)
- Floor brush (08-2505) · Disposable filter bag (19-3102) · Cartridge filter (08-2566B)



PORTABLE STAINLESS STEEL SERIES



SL19128



INCLUDED :

- 1-1/4 " x 5 ' hose (25-1204) · Crevice nozzle (13-1508) · 3 Extension wands (25-1205A) · Gulper nozzle (13-1588)
- Floor brush (13-1505A) · Disposable filter bag (25-1288) · Reusable dry filter with clamp ring (25-1201)
- Foam filter (25-1202)



Tank Size	Power	Sealed Pressure	Airflow	Electrical Rating	Power Cord
12 Liters	900W	16KPa	25L/s	230V/50Hz	3m

SL19129



INCLUDED :

- 1-1/4 " x 5 ' hose (25-1204) · Crevice nozzle (13-1508) · 3 Extension wands (25-1205A) · Gulper nozzle (13-1570)
- Floor brush (13-1505A) · Disposable filter bag (25-1230) · Reusable dry filter with clamp ring (25-1201)
- Foam filter (25-1202)



Tank Size	Power	Sealed Pressure	Airflow	Electrical Rating	Power Cord
15 Liters	900W	16KPa	25L/s	230V/50Hz	3m

SL19301-4B



INCLUDED :

- 1-1/4 " x 4 ' hose (13-3304) · Gulper nozzle (13-1588) · Inflation kit (13-4001) · Foam filter (20-1200A)
- Reusable dry filter with clamp ring (20-1100) · Disposable filter bag (25-1238) · 3 Extension wands (25-1205A)



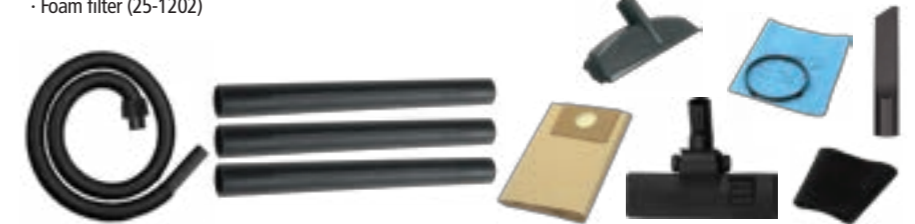
Tank Size	Power	Sealed Pressure	Airflow	Electrical Rating	Power Cord
15 Liters	850W	12.5KPa	29L/s	230V/50Hz	3m

SL19130



INCLUDED :

- 1-1/4 " x 5 ' hose (25-1204) · Crevice nozzle (13-1508) · 3 Extension wands (13-1502) · Gulper nozzle (13-1570)
- Floor brush (13-1505A) · Disposable filter bag (25-1230) · Reusable dry filter with clamp ring (25-1201)
- Foam filter (25-1202)



Tank Size	Power	Sealed Pressure	Airflow	Electrical Rating	Power Cord
19 Liters	850W	16KPa	29L/s	230V/50Hz	3m

PORTABLE STAINLESS STEEL PLUS SERIES



SL19136

INCLUDED:

- 1-1/4" x 5' hose (25-1204) · Crevice nozzle (13-1508) · 3 Extension wands (25-1205A) · Gulper nozzle (13-1588)
- Floor nozzle (13-1570) · Disposable filter bag (25-1230) · Reusable dry filter with clamp ring (20-1100)
- Foam filter (20-1200A)



Tank Size	Power	Sealed Pressure	Airflow	Electrical Rating	Power Cord
12 Liters	750W	13KPa	28L/s	230V/50Hz	3m



SL19137

INCLUDED:

- 1-1/4" x 5' hose (25-1204) · Crevice nozzle (13-1508) · 3 Extension wands (25-1205A) · Gulper nozzle (13-1588)
- Floor nozzle (13-1570) · Disposable filter bag (25-1230) · Reusable dry filter with clamp ring (20-1100)
- Foam filter (20-1200A)



Tank Size	Power	Sealed Pressure	Airflow	Electrical Rating	Power Cord
15 Liters	750W	13KPa	28L/s	230V/50Hz	3m

SL19138

INCLUDED:

- 1-1/4" x 5' hose (25-1204) · Crevice nozzle (13-1508) · 3 Extension wands (25-1205A) · Gulper nozzle (13-1588)
- Floor brush (13-1505A) · Disposable filter bag (25-1230) · Reusable dry filter with clamp ring (20-1100)
- Foam filter (20-1200A)



Tank Size	Power	Sealed Pressure	Airflow	Electrical Rating	Power Cord
19 Liters	750W	13KPa	28L/s	230V/50Hz	3m

SL19305-5B

INCLUDED:

- 1-1/4" x 5' hose (25-1204) · Crevice nozzle (13-1508) · 3 Extension wands (25-1205A) · Gulper nozzle (13-1588)
- Floor nozzle (13-1570) · Disposable filter bag (25-1230) · Reusable dry filter with clamp ring (20-1100)
- Foam filter (20-1200A)



Tank Size	Power	Sealed Pressure	Airflow	Electrical Rating	Power Cord
19 Liters	1000W	12KPa	34L/s	230V/50Hz	3m



PRO STAINLESS STEEL SERIES



SL19402-5B



INCLUDED:

- 1-1/4" x 5' hose (13-3301) · Crevice nozzle (13-1508) · 3 Extension wands (25-1205A) · Gulper nozzle (13-1588)
- Floor nozzle (13-1570) · Disposable filter bag (19-3100) · Reusable dry filter with clamp ring (19-1500)
- Foam filter (19-1600)



Tank Size	Power	Sealed Pressure	Airflow	Electrical Rating	Power Cord
19 Liters	1100W	16KPa	35L/s	230V/50Hz	3m

SL19402-6B



INCLUDED:

- 1-1/4" x 5' hose (13-3301) · Crevice nozzle (13-1508) · 3 Extension wands (25-1205A) · Gulper nozzle (13-1588)
- Floor nozzle (13-1570) · Disposable filter bag (19-3100) · Reusable dry filter with clamp ring (19-1500)
- Foam filter (19-1600)



Tank Size	Power	Sealed Pressure	Airflow	Electrical Rating	Power Cord
23 Liters	1100W	16KPa	35L/s	230V/60Hz	3m

SL19016



INCLUDED:

- 1-1/4" x 6' hose (13-1504) · Crevice nozzle (13-1508) · 2 Extension wands (13-1502A) · Gulper nozzle (13-1588)
- Floor brush (13-1505) · Disposable filter bag (13-1519) · Cartridge filter (19-1800)



Tank Size	Power	Sealed Pressure	Airflow	Electrical Rating	Power Cord
23 Liters	1200W	16KPa	24L/s	230V/60Hz	4.8m

SL19017



INCLUDED:

- 1-1/4" x 6' hose (13-1504) · Crevice nozzle (13-1508) · 2 Extension wands (13-1502A) · Gulper nozzle (13-1588)
- Floor brush (13-1505) · Disposable filter bag (13-1519) · Cartridge filter (19-1800)



Tank Size	Power	Sealed Pressure	Airflow	Electrical Rating	Power Cord
30 Liters	1200W	16KPa	24L/s	230V/60Hz	4.8m

SL19402-8A



INCLUDED :

- 1-7/8 " x 6 ' hose (19-1100) · Crevice nozzle (19-1400) · 2 Extension wands (19-1200) · Utility nozzle (19-1300)
- Floor nozzle (19-1900) · Disposable filter bag (19-3100) · Cartridge filter (08-2566B)



Tank Size	Power	Sealed Pressure	Airflow	Electrical Rating	Power Cord
30 Liters	1100W	16KPa	38L/s	230V/50Hz	3m

SL19402-8B



INCLUDED :

- 1-7/8 " x 6 ' hose (19-1100) · Crevice nozzle (19-1400) · 2 Extension wands (19-1200) · Utility nozzle (19-1300)
- Floor nozzle (19-1900) · Disposable filter bag (19-3100) · Cartridge filter (08-2566B)



Tank Size	Power	Sealed Pressure	Airflow	Electrical Rating	Power Cord
30 Liters	1200W	16KPa	42L/s	230V/50Hz	3m

SL19156-10A



INCLUDED :

- 1-7/8 " x 6 ' hose (19-1100) · Crevice nozzle (19-1400) · 2 Extension wands (19-1200) · Utility nozzle (19-1300)
- Floor brush (19-2300) · Disposable filter bag (19-3101) · Cartridge filter (08-2566B)



Tank Size	Power	Sealed Pressure	Airflow	Electrical Rating	Power Cord
38 Liters	1200W	16KPa	42L/s	230V/50Hz	4.8m

SL19156



INCLUDED :

- 1-7/8 " x 6 ' hose (19-1100) · Crevice nozzle (19-1400) · 2 Extension wands (19-1200) · Utility nozzle (19-1300)
- Floor brush (19-2300) · Disposable filter bag (19-3101) · Cartridge filter (08-2566B)



Tank Size	Power	Sealed Pressure	Airflow	Electrical Rating	Power Cord
38 Liters	1200W	16KPa	42L/s	230V/50Hz	4.8m

SL19199-16A



INCLUDED :

- 2-1/2 " x 6 ' hose (08-2536) · Crevice nozzle (08-2506) · 2 Extension wands (08-2502) · Utility nozzle (08-2503)
- Floor brush (08-2505) · Disposable filter bag (19-3102) · Cartridge filter (08-2566B)



Tank Size	Power	Sealed Pressure	Airflow	Electrical Rating	Power Cord
61 Liters	1200W	18KPa	42L/s	230V/50Hz	5.4m

SL19601-16B



INCLUDED :

- 2-1/2 " x 6 ' hose (08-2536) · Crevice nozzle (08-2506) · 2 Extension wands (08-2502) · Utility nozzle (08-2503)
- Floor brush (08-2591) · Disposable filter bag (19-3102) · Cartridge filter (08-2566B)



Tank Size	Power	Sealed Pressure	Airflow	Electrical Rating	Power Cord
61 Liters	1200W	18KPa	42L/s	230V/50Hz	5.4m

INDUSTRIAL STAINLESS STEEL SERIES



SL19401-8A



INCLUDED:

- 2-1/2" x 6' hose (08-2536) · Crevice nozzle (08-2506) · 2 Extension wands (08-2502) · Utility nozzle (08-2503)
- Floor brush (08-2591) · Disposable filter bag (19-3101) · Cartridge filter (08-2566B)



Tank Size	Power	Sealed Pressure	Airflow	Electrical Rating	Power Cord
30 Liters	XXXW	17KPa	2831L/min	230V/50Hz	4.8m

SL19401-8B



INCLUDED:

- 2-1/2" x 6' hose (08-2536) · Crevice nozzle (08-2506) · 2 Extension wands (08-2502) · Utility nozzle (08-2503)
- Floor brush (08-2591) · Disposable filter bag (19-3101) · Cartridge filter (08-2566B)



Tank Size	Power	Sealed Pressure	Airflow	Electrical Rating	Power Cord
30 Liters	XXXW	17KPa	2831L/min	230V/50Hz	4.8m

SL19501-10A



INCLUDED:

- 2-1/2" x 6' hose (08-2536) · Crevice nozzle (08-2506) · 2 Extension wands (08-2502) · Utility nozzle (08-2503)
- Floor brush (08-2591) · Disposable filter bag (19-3101) · Cartridge filter (08-2566B)



Tank Size	Power	Sealed Pressure	Airflow	Electrical Rating	Power Cord
38 Liters	XXXW	17KPa	2831L/min	230V/50Hz	4.8m

INDUSTRIAL STAINLESS STEEL SERIES

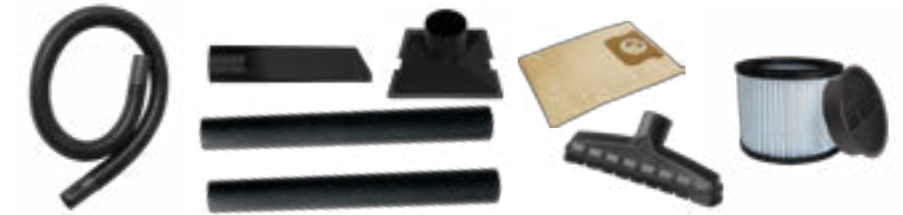


SL19501-12B



INCLUDED :

- 2-1/2 " x 6 ' hose (08-2536) · Crevice nozzle (08-2506) · 2 Extension wands (08-2502) · Utility nozzle (08-2503)
- Floor brush (08-2591) · Disposable filter bag (19-3101) · Cartridge filter (08-2566B)



Tank Size	Power	Sealed Pressure	Airflow	Electrical Rating	Power Cord
53 Liters	XXXW	16KPa	2831L/min	230V/50Hz	6m

SL19601-14B



INCLUDED :

- 2-1/2 " x 6 ' hose (08-2536) · Crevice nozzle (08-2506) · 2 Extension wands (08-2502) · Utility nozzle (08-2503)
- Floor brush (08-2591) · Disposable filter bag (19-3101) · Cartridge filter (08-2566B)



Tank Size	Power	Sealed Pressure	Airflow	Electrical Rating	Power Cord
45 Liters	XXXW	16KPa	2831L/min	230V/50Hz	4.8m

SL19601-16B



INCLUDED :

- 2-1/2 " x 6 ' hose (08-2536) · Crevice nozzle (08-2506) · 2 Extension wands (08-2502) · Utility nozzle (08-2503)
- Floor brush (08-2591) · Disposable filter bag (19-3101) · Cartridge filter (08-2566B)



Tank Size	Power	Sealed Pressure	Airflow	Electrical Rating	Power Cord
61 Liters	XXXW	16KPa	3398L/min	230V/50Hz	6m

HANG UP SERIES



SL19132



INCLUDED :

· 1-1/4 " x 20 ' flexible hose (25-1218) · Crevice nozzle (13-1508) · 2 Extension wands (13-1502) · Gulper nozzle (13-1588) · Floor brush (13-1505A) · Disposable filter bag (25-1228) · Foam filter (25-1202) · Reusable dry filter with clamp ring (25-1201) · Mounting bracket (metal) · Tool holder



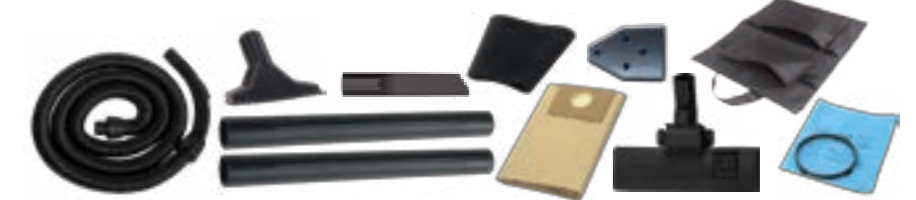
Tank Size	Power	Sealed Pressure	Airflow	Electrical Rating	Power Cord
13 Liters	XXXW	16KPa	2123L/min	230V/50Hz	1.8m

SL19133P



INCLUDED :

· 1-1/4 " x 20 ' flexible hose (25-1218) · Crevice nozzle (13-1508) · 2 Extension wands (25-1205A) · Gulper nozzle (13-1588) · Floor brush (13-1505A) · Disposable filter bag (25-1228) · Foam filter (25-1202) · Reusable dry filter with clamp ring (25-1201) · Mounting bracket (poly) · Tool holder



Tank Size	Power	Sealed Pressure	Airflow	Electrical Rating	Power Cord
17 Liters	XXXW	16KPa	2123L/min	230V/50Hz	1.8m

SL19133



INCLUDED :

· 1-1/4 " x 20 ' flexible hose (25-1218) · Crevice nozzle (13-1508) · 2 Extension wands (13-1502) · Gulper nozzle (13-1588) · Floor brush (13-1505A) · Disposable filter bag (25-1228) · Foam filter (25-1202) · Reusable dry filter with clamp ring (25-1201) · Mounting bracket (metal) · Tool holder



Tank Size	Power	Sealed Pressure	Airflow	Electrical Rating	Power Cord
17 Liters	XXXW	16KPa	2123L/min	230V/50Hz	1.8m

SL19139P



INCLUDED :

· 1-1/4 " x 20 ' flexible hose (25-1218) · Crevice nozzle (13-1508) · 2 Extension wands (25-1205A) · Gulper nozzle (13-1588) · Floor brush (13-1505A) · Disposable filter bag (25-1228) · Foam filter (25-1202) · Reusable dry filter with clamp ring (25-1201) · Mounting bracket (poly) · Tool holder



Tank Size	Power	Sealed Pressure	Airflow	Electrical Rating	Power Cord
17 Liters	XXXW	13KPa	2265L/min	230V/50Hz	1.8m

BUCKET HEAD & ASH TANK & ASH VAC



SL19180



INCLUDED:

- 1-1/4" x 4' hose (20-1300) · Crevice nozzle (13-1508) · Gulper nozzle (13-1588) · Foam filter (20-1200A)
- Reusable dry filter with clamp ring (20-1100)



Tank Size	Power	Sealed Pressure	Airflow	Electrical Rating	Power Cord
15 Liters	XXXW	16KPa	2265L/min	230V/50Hz	2m

SL19184



INCLUDED:

- 1-1/4" x 4' metal hose (25-1043) · Pre-filter (25-1040) · Cartridge filter (25-1041) · Round brush (13-1580)
- Aluminum extension wand (25-1042)



Tank Size	Power	Sealed Pressure	Airflow	Electrical Rating	Power Cord
15 Liters	XXXW	13KPa	2265L/min	230V/50Hz	2.4m

SL19182



INCLUDED:

- 1-1/4" x 4' metal hose (25-1043) · Pre-filter (25-1040) · Cartridge filter (25-1041) · Round brush (13-1580)
- Aluminum extension wand (25-1042)



Tank Size	Power	Sealed Pressure	Airflow	Electrical Rating	Power Cord
15 Liters	N/A	N/A	N/A	N/A	N/A

STANLEY®

VACUUM ACCESSORIES



FILTERS

Any job is easier when you have the right tools.

Whether you are vacuuming your garage, workshop or indoor floors, picking up liquids, cleaning your car or cleaning up outdoors.

There's a STANLEY accessory to make cleanup easier quicker and more efficient.

Accessories are interchangeable with other major brand wet/dry vacuum equipment.



20-1200A
Foam filter
Fit for Bucket head and 9.5-19 L with blower function (except SL19123P, SL19143, SL19115, SL19115P)



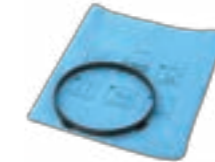
25-1202
Foam filter
Fit for 11 L (SL19123P) and 9.5-19 L w/o blower function



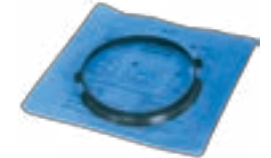
19-1600
Foam filter
Fit for 3.8, 7.5, 19 - 68 L (except SL19130, SL19138)



20-1100
Reusable dry filter (with clamp ring)
Fit for Bucket head and 9.5-19 L with blower function (except SL19123P, SL19143, SL19115, SL19115P)



25-1201 / 25-1200N
Reusable dry filter (with clamp ring)
Fit for 11 L (SL19123P) and 3.8 - 19 L w/o blower function



19-1500 / 19-1500N
Reusable dry filter (with clamp ring)
Fit for 19 - 68 L (except SL19130, SL19138)



19-3100 / 19-3100N
Disposable filter bag
Fit for 19 - 30 L w/48mm vacuum port only



19-3101 / 19-3101N
Disposable filter bag
Fit for 19 - 45 L w/48mm vacuum port only



19-3102 / 19-3102N
Disposable filter bag
Fit for 53 - 68L



25-1230 / 25-1230N
Disposable filter bag
Fit for 15 - 19 L (except SL19143, SL19115, SL19115P)



25-1228 / 25-1228N
Disposable filter bag
Fit for 9.5 - 13 L



25-1238
Disposable filter bag
Fit for 15 L (19301-4B) vacuum port only

* "N" Express "No silk screen"

Cartridge Filter



08-2551
Cartridge filter
Fit for 2.5 - 5gal w/blower
function
(except SL18123P,SL18143,
SL18115,SL18115P)



08-2566B
Cartridge filter w/cap
Fit for FATMAX,BOSTITCH

32mm Accessories



25-1205A
1-1/4" x 1' extension wand



13-1502A
1-1/4" x 1.5' extension wand



13-1588
1-1/4" gulper nozzle



15-1000
universal machine-adaptor



13-1505N
1-1/4" floor brush



13-1570
1-1/4" x 10" floor nozzle



13-1571
1-1/4" floor nozzle



13-1508
1-1/4" crevice nozzle



13-1505
1-1/4" floor brush



13-1572
1-1/4" floor brush



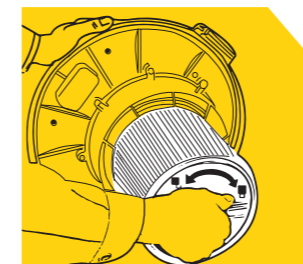
13-1580
1-1/4" round brush



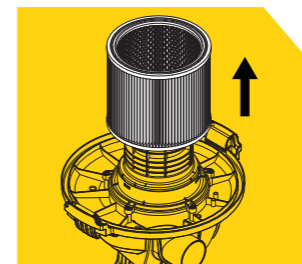
13-4001
1-1/4" inflation kit



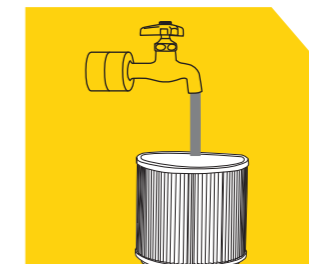
13-1584
Micro cleaning kit



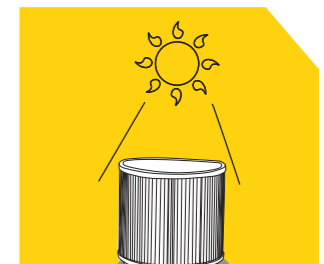
Hold the power head and turn the filter retainer counterclockwise to loosen and remove



With the power head in an upside down position, slide the cartridge filter up over the lid cage



To clean filter, brush off excess dirt with water



DRY completely (approximately 24 hours) and reinstall

32mm Hose Accessories



25-1203
1-1/4" x 4' hose
Fit for 1 - 5gal



20-1300
1-1/4" x 4' hose
Fit for 3gal
(SL18123P, SL18910P)



25-1204
1-1/4" x 5' hose
for 2.5 - 5gal w/o blower
function



25-1218
1-1/4" x 20' flexible hose
Fit for .3 5-5gal wall-mount
vac



13-1504
1-1/4" x 6' hose
Fit for 6-8gal
(SL18017, SL18016, SL18017
only)



13-3302
1-1/4" x 5' hose
Fit for
SL18201-4B



13-3301
1-1/4" x 5' hose
Fit for 5 - 12gal



13-3300
1-1/4" x 6' hose
Fit for 5 - 12gal



13-3304
1-1/4" x 4' hose
Fit for
SL18301-4B



13-3306
1-1/4" x 4' hose
Fit for
SL18101P-1H



19-1101
1-1/4" x 10' hose
Fit for
SL18501-10A



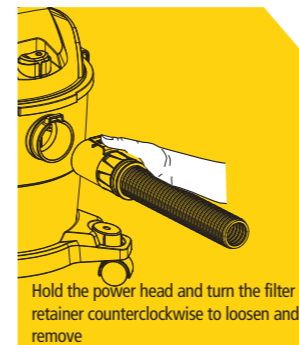
25-1206
1-1/4" x 6' hose
Fit for
SL18957P-5



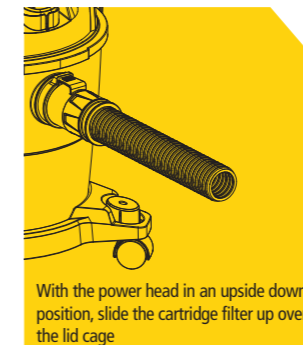
48mm Hose Accessories



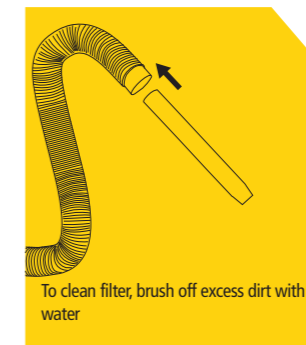
19-1100
Fit for 6-18gal w/1-7/8"
vacuum port only



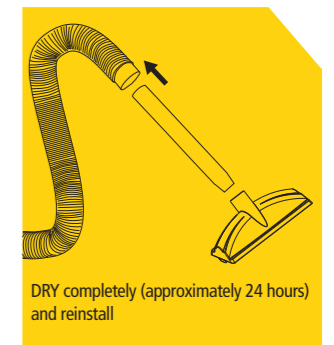
Hold the power head and turn the filter retainer counterclockwise to loosen and remove



With the power head in an upside down position, slide the cartridge filter up over the lid cage



To clean filter, brush off excess dirt with water



DRY completely (approximately 24 hours) and reinstall

48mm Accessories



19-1200
1-7/8" x 1.6' extension wand



19-1300
1-7/8" utility nozzle



19-1400
1-7/8" crevice nozzle



19-2300
1-7/8" floor Brush



19-1900
1-7/8" x 10" floor nozzle



19-2400
1-7/8" round brush



11-2100
1-7/8" to 2-1/2" adaptor



11-1100
1-7/8" to 1-1/4" adaptor



19-1202
1-7/8" x 1.5' hose

64mm Accessories



08-2502
2-1/2" x 1.6' extension wand



08-2503
2-1/2" utility nozzle



08-2505
2-1/2" floor brush



08-2506
2-1/2" crevice nozzle



08-2591
2-1/2" floor brush



08-2718
2-1/2" to 1-7/8" adaptor



08-2712
2-1/2" to 1-1/4" adaptor



08-2401
2-1/2" round brush

64mm Hose Accessories



08-2526
2-1/2" x 7' hose
Fit for 14 - 18gal w/thread
lock port only



08-2536
2-1/2" x 6' hose
Fit for 10 - 18gal w/quick lock port only

