



MESSER

Financial Group

From: Matthew Tolbert

Christmas
Activity Book





Santa's Reindeer

Blitzen
Comet
Cupid

Dancer
Dasher
Donner

Prancer
Rudolph
Vixen





Cozy Christmas

Christmas
Fireplace
Frosty
Garland

Grinch
Hot Cocoa
Jack Frost
Knit Hat

Mittens
Ornaments
Santa
Scarf

Snow Angels
Snowflake
Snowman
Stockings

String Lights
Sweater
Tinsel
Tree Topper

J	Z	B	E	R	C	Q	D	V	G	A	R	L	A	N	D	L	I
A	P	Y	A	S	H	X	C	N	M	B	I	E	W	U	L	Y	D
C	G	S	H	Z	O	T	S	T	N	E	M	A	N	R	O	L	W
K	B	N	U	I	T	R	T	Q	Z	N	V	G	D	F	S	L	I
F	O	O	Q	S	C	A	R	F	I	R	E	P	L	A	C	E	B
R	Y	W	T	U	O	Z	I	P	A	E	W	I	O	J	Z	M	N
O	P	M	I	R	C	C	N	C	H	L	K	G	R	I	N	C	H
S	K	A	Q	E	O	U	G	X	B	J	Y	L	M	O	D	R	R
T	G	N	F	L	A	W	L	S	N	O	W	F	L	A	K	E	C
R	P	I	D	C	H	R	I	S	T	M	A	S	C	Z	J	T	R
E	T	Y	I	X	Y	X	G	U	I	A	N	S	A	N	T	A	X
E	G	Z	A	U	K	C	H	Y	F	U	L	R	D	Q	E	E	A
T	H	L	E	S	N	I	T	O	R	X	J	G	P	A	T	W	G
O	Z	W	K	J	I	P	S	N	O	W	A	N	G	E	L	S	J
P	N	V	G	X	T	R	X	T	S	A	Z	I	O	L	T	Y	A
P	O	X	I	P	H	K	V	S	T	O	C	K	I	N	G	S	V
E	Y	H	Q	U	A	Z	B	B	Y	P	G	A	E	Y	W	Z	G
R	N	E	M	I	T	T	E	N	S	V	M	C	V	D	B	I	U



MESSER Employee Pet Names

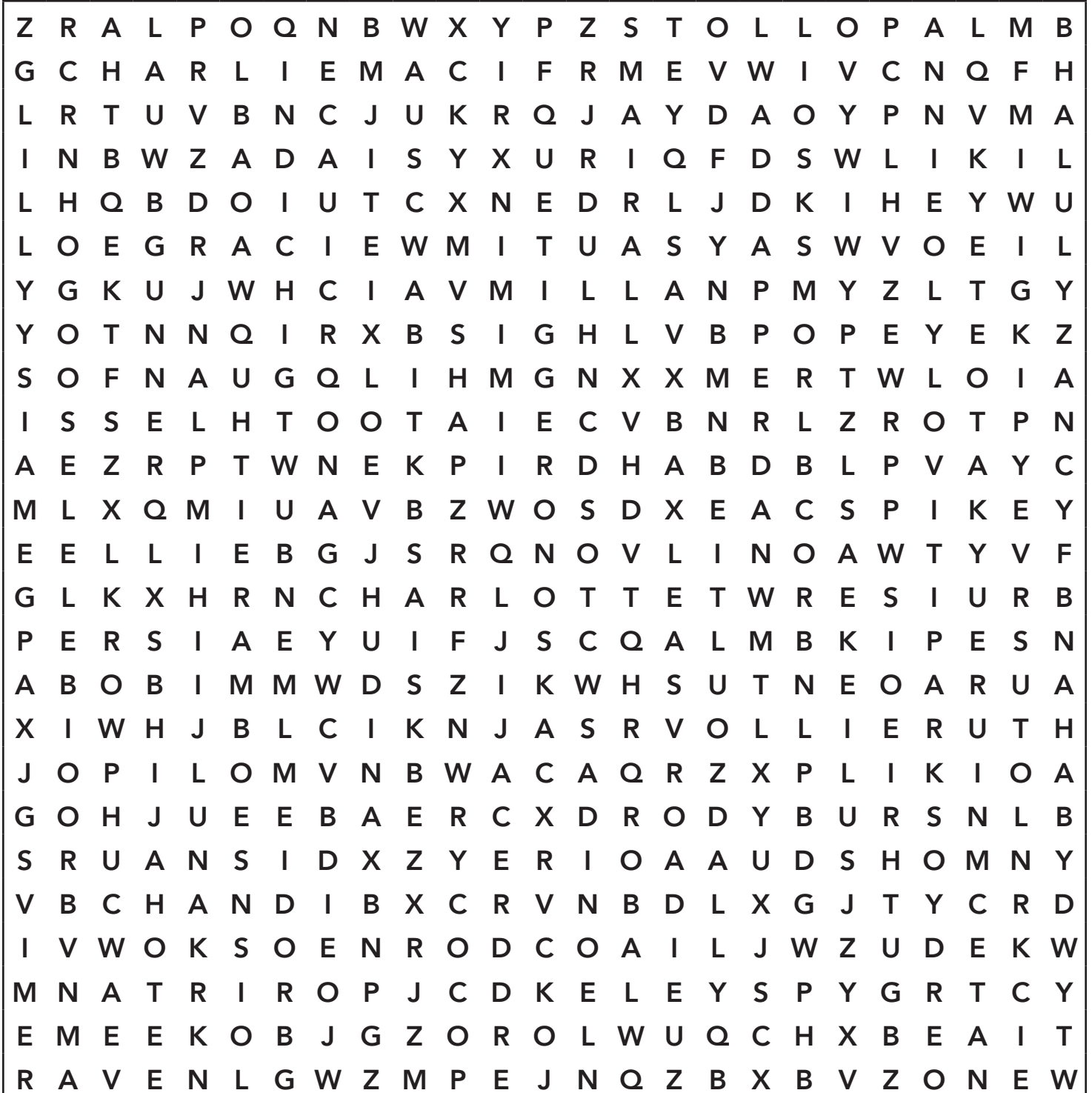
Ally
Annie
Apollo
Axle
Bell
Bhalu
Bob
Brodie
Bruiser
Chandi

Charlie Mac
Charlotte
Coco
Daisy
Dapper Dan
Dina
Ellie
Elvis
Goose
Gracie

Gunner
Guthrie
Gypsy
Jace
Jayda
Leonidas
Lilly
Lotus
Luna
Maisy

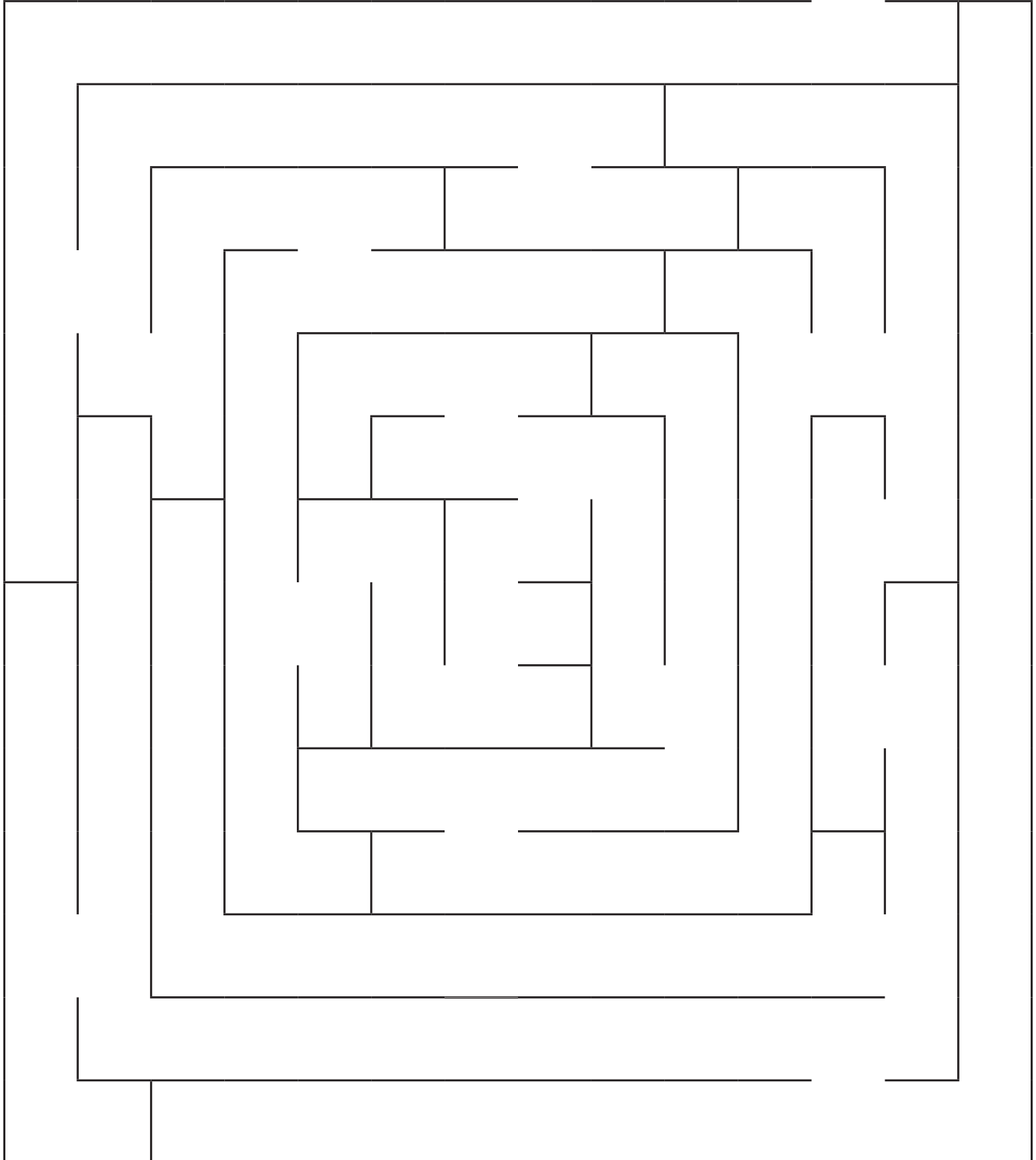
Max
Meeko
Milla
Mimi
Ollie Ruth
Persia
Popeye
Rambo
Raven
Remi

Ripken
Roadie
Rocky
Ruby
Skip
Sophia
Spikey
Spooky
Tigger
Toothless





Enter



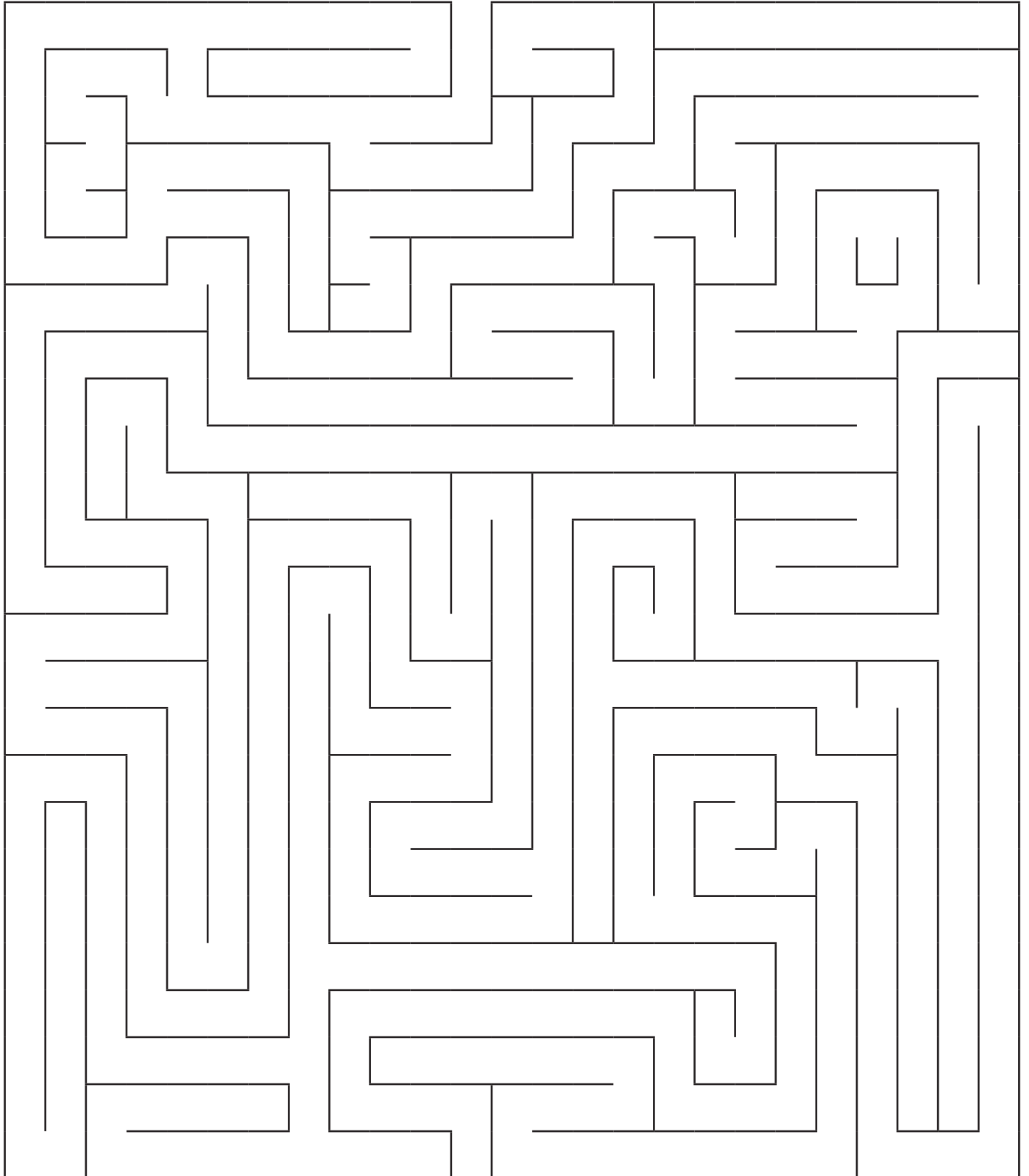
Exit



Maze 3



Enter



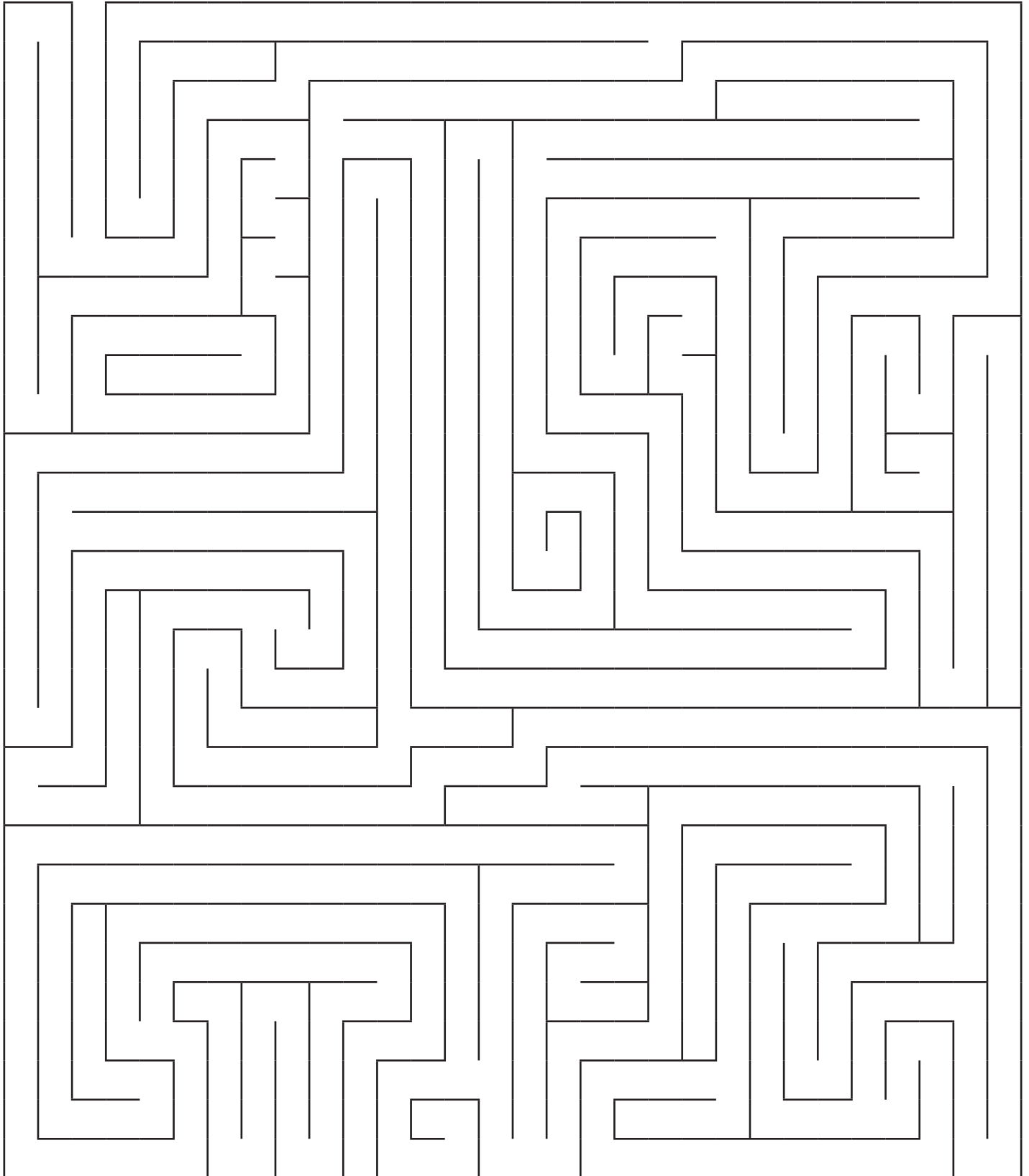
Exit



Maze 4

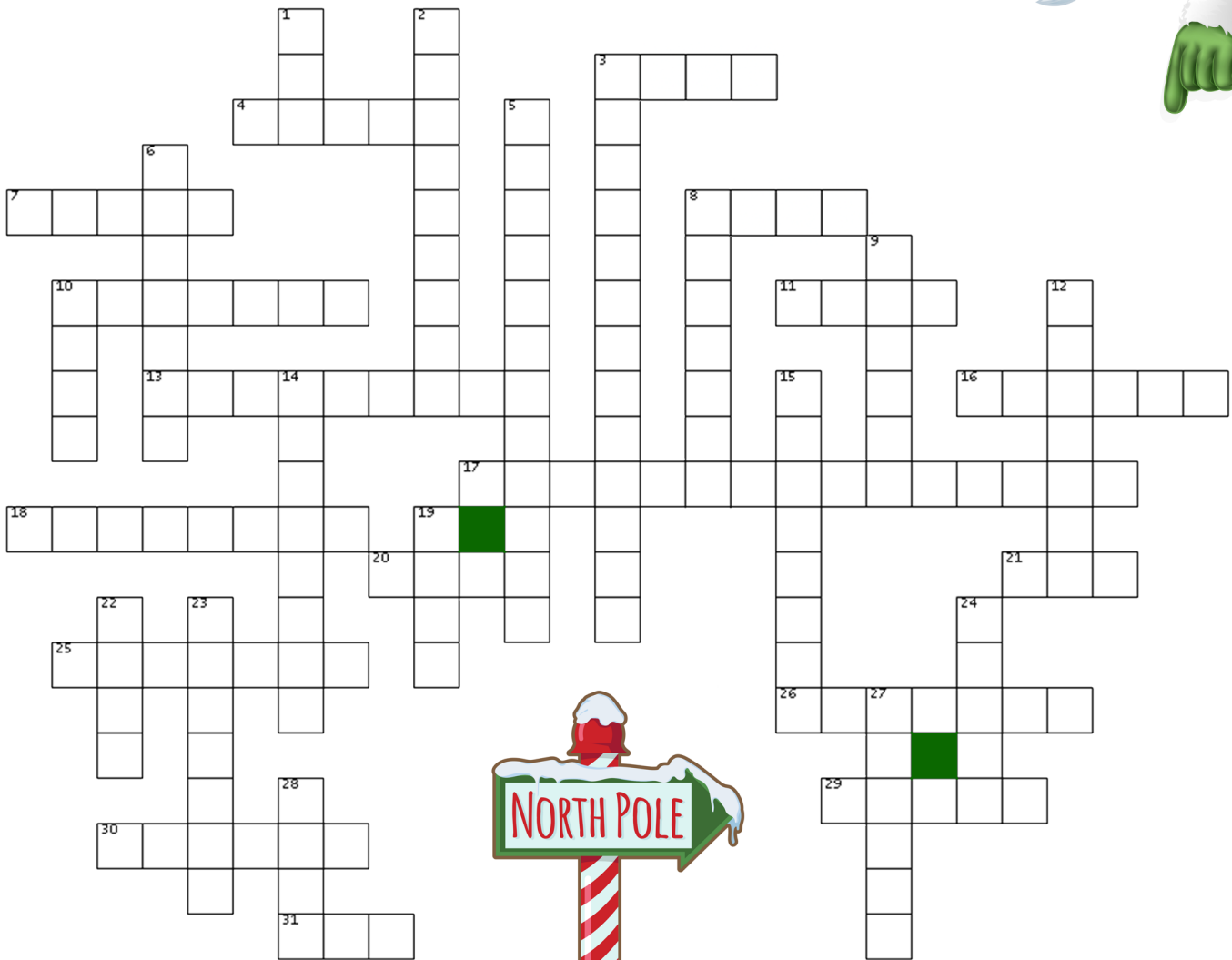


Enter



Exit

Very Merry Crossword



Down

1. Apple, Pecan, Pumpkin
2. Classic film "It's a _____ Life"
3. "_____, I gave you my heart..." (2 words)
5. "Bearing gifts, we traversed afar" (3 words)
6. Buddy the "Elf" actor
8. Candied pecans
9. "Hard Candy Christmas" songstress
10. Wintry precipitation
12. "_____ on 34th Street"
14. Holiday-centric cable TV network
15. Spherical party appetizer
19. Meet me under the mistletoe
22. "It's lovely weather for a Sleigh _____"
23. Santa's preferred entryway
24. "Icy" footwear
27. Whoville thief
28. Followed by the wisemen

Across

3. He's making this and checking it twice
4. He was left "Home Alone"
7. Gift a pair of these on day two
8. Nutcracker movement "Dance of the Sugar ____ Fairy"
10. His favorite sentiment is "Bah Humbug"
11. Naughty kids find this in their stocking
13. "Santa Baby" convertible color (2 words)
16. All she wants for Christmas is you!
17. Beach Boys holiday hit (3 words)
18. "Christmas Vacation" family surname
20. "Silver Bells" action
21. What Rudolph did with the sleigh
25. Debatable Christmas flick with Bruce Willis (2 words)
26. "A Christmas Story" featured lighting (2 words)
29. Warm apple beverage
30. Door ornament
31. Rudolph's nasal hue

Spot the Differences

See if you can identify the 12 differences between the two Christmas cards below.



Christmas Song Scramble

Unscramble the hit holiday songs below. Take the letters found in the circles and unscramble those to find the title of a Christmas song children love to sing!

TORYFS HTE MAOSWNN

○ ○

NELIJG LESBL

○

INSLET THING

○

LRIEVS SBLEL

○

OYJ OT HET ORWDL

○

GSLIHE DRIE

○

RAMY IDD OUY ONWK

○

HTE RIFTS LEON

○

THAW LICHD SI SITH

○

TILTEL MURDERM YOB

○ ○

EUBL MITHRACSS

○

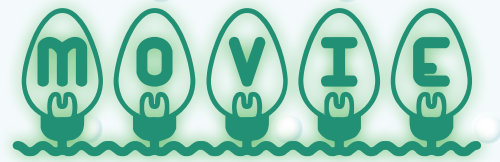
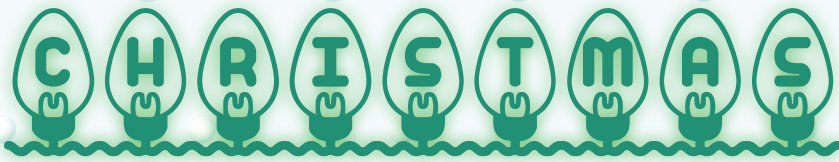
NUR LRUOPHD UNR

○

TI EMAC POUN A DINMHGIT RELAC

○

○ ○ ○ ○ ○ ○ ○ ○ ○ ○ ○ ○ ○ ○ ○ ○



Watchlist

MESSER employees submitted their favorite holiday movies to watch this time of year. Check out our curated Christmas movie watchlist!

A Charlie Brown Christmas

1965 • Not rated

A Christmas Story

1983 • PG

Bad Santa

2003 • R

Die Hard

1988 • R

Elf

2003 • PG

Ernest Saves Christmas

1988 • PG

Frosty the Snowman

1969 • TV-G

Home Alone

1990 • PG

Home Alone 2: Lost In New York

1992 • PG

It's a Wonderful Life

1946 • PG

Just Another Christmas

2020 • Not rated

Last Holiday

2006 • PG-13

Lethal Weapon

1987 • R

Love Actually

2003 • R

March of the Wooden Soldiers

1934 • Passed

Miracle on 34th Street

1947 • Not rated

National Lampoon's Christmas Vacation

1989 • PG-13

Rudolph the Red-Nosed Reindeer

1964 • TV-G

Santa Claus is Comin' To Town

1970 • TV-G

Scrooged

1988 • PG-13

The Night Before

2015 • R

The Santa Clause

1994 • PG

The Year Without a Santa Claus

1974 • TV-G

Trading Places

1983 • R

White Christmas

1954 • Not rated

Most Popular

**National Lampoon's
Christmas Vacation**



Answer Key



T	W	C	U	P	I	D	Y	C	B
R	O	S	N	Z	U	A	O	P	L
G	Q	B	H	J	R	S	K	X	I
R	U	D	O	L	P	H	Q	L	T
I	Z	W	V	B	X	E	W	T	Z
P	R	A	N	C	E	R	C	N	E
R	T	Q	H	V	V	I	X	E	N
L	S	P	X	C	O	M	E	T	W
D	O	N	N	E	R	E	P	B	I
C	Q	I	Z	D	A	N	C	E	R

J	Z	B	E	R	C	Q	D	V	G	A	R	L	A	N	D	L	I
A	P	Y	A	S	H	X	C	N	M	B	I	E	W	U	L	Y	D
C	G	S	H	Z	O	T	S	T	N	E	M	A	N	R	O	L	W
K	B	N	U	I	T	R	T	Q	Z	N	V	G	D	F	S	L	I
F	O	O	Q	S	C	A	R	F	I	R	E	P	L	A	C	E	B
R	Y	W	T	U	O	Z	I	P	A	E	W	I	O	J	Z	M	N
O	P	M	I	R	C	C	N	C	H	L	K	G	R	I	N	C	H
S	K	A	Q	E	O	U	G	X	B	J	Y	L	M	O	D	R	R
T	G	N	F	L	A	W	L	S	N	O	W	F	L	A	K	E	C
R	P	I	D	C	H	R	I	S	T	M	A	S	C	Z	J	T	R
E	T	Y	I	X	Y	X	G	U	I	A	N	S	A	N	T	A	X
E	G	Z	A	U	K	C	H	Y	F	U	L	R	D	Q	E	E	A
T	H	L	E	S	N	I	T	O	R	X	J	G	P	A	T	W	G
O	Z	W	K	J	I	P	S	N	O	W	A	N	G	E	L	S	J
P	N	V	G	X	T	R	X	T	S	A	Z	I	O	L	T	Y	A
P	O	X	I	P	H	K	V	S	T	O	C	K	I	N	G	S	V
E	Y	H	Q	U	A	Z	B	B	Y	P	G	A	E	Y	W	Z	G
R	N	E	M	I	T	T	E	N	S	V	M	C	V	D	B	I	U

Z	R	A	L	P	O	Q	N	B	W	X	Y	P	Z	S	T	O	L	L	O	P	A	L	M	B	
G	C	H	A	R	L	I	E	M	A	C	I	F	R	M	E	V	W	I	V	C	N	Q	F	H	
L	R	T	U	V	B	N	C	J	U	K	R	Q	J	A	Y	D	A	O	Y	P	N	V	M	A	
I	N	B	W	Z	A	D	A	I	S	Y	X	U	R	I	Q	F	D	S	W	L	I	K	I	L	
L	H	Q	B	D	O	I	U	T	C	X	N	E	D	R	L	J	D	K	I	H	E	Y	W	U	
L	O	E	G	G	R	A	C	I	E	W	M	I	T	U	A	S	Y	A	S	W	V	O	E	I	L
Y	G	K	U	J	W	H	C	I	A	V	M	I	L	L	A	N	P	M	Y	Z	L	T	G	Y	
Y	O	T	N	N	Q	I	R	X	B	S	I	G	H	L	V	B	P	O	P	E	Y	E	K	Z	
S	O	F	N	A	U	G	Q	L	I	H	M	G	N	X	X	M	E	R	T	W	L	O	I	A	
I	S	S	E	L	H	T	O	O	T	A	I	E	C	V	B	N	R	L	Z	R	O	T	P	N	
A	E	Z	R	P	T	W	N	E	K	P	I	R	D	H	A	B	D	B	L	P	V	A	Y	C	
M	L	X	Q	M	I	U	A	V	B	Z	W	O	S	D	X	E	A	C	S	P	I	K	E	Y	
E	E	L	L	I	E	B	G	J	S	R	Q	N	O	V	L	I	N	O	A	W	T	Y	V	F	
G	L	K	X	H	R	N	C	H	A	R	L	O	T	T	E	T	W	R	E	S	I	U	R	B	
P	E	R	S	I	A	E	Y	U	I	F	J	S	C	Q	A	L	M	B	K	I	P	E	S	N	
A	B	O	B	I	M	M	W	D	S	Z	I	K	W	H	S	U	T	N	E	O	A	R	U	A	
X	I	W	H	J	B	L	C	I	K	N	J	A	S	R	V	O	L	L	I	E	R	U	T	H	
J	O	P	I	L	O	M	V	N	B	W	A	C	A	Q	R	Z	X	P	L	I	K	I	O	A	
G	O	H	J	U	E	E	B	A	E	R	C	X	D	R	O	D	Y	B	U	R	S	N	L	B	
S	R	U	A	N	S	I	D	X	Z	Y	E	R	I	O	A	A	U	D	S	H	O	M	N	Y	
V	B	C	H	A	N	D	I	B	X	C	R	V	N	B	D	L	X	G	J	T	Y	C	R	D	
I	V	W	O	K	S	O	E	N	R	O	D	C	O	A	I	L	J	W	Z	U	D	E	K	W	
M	N	A	T	R	I	R	O	P	J	C	D	K	E	L	E	Y	S	P	Y	G	R	T	C	Y	
E	M	E	E	K	O	B	J	G	Z	O	R	O	L	W	U	Q	C	H	X	B	E	A	I	T	
R	A	V	E	N	L	G	W	Z	M	P	E	J	N	Q	Z	B	X	B	V	Z	O	N	E	W	

Spot the Differences

See if you can identify the 12 differences between the two Christmas cards below.



Christmas Song Scramble

Frosty The Snowman

Jingle Bells

Silent Night

Silver Bells

Joy To The World

Sleigh Ride

Mary Did You Know

The First Noel

What Child Is This

Little Drummer Boy

Blue Christmas

Run Rudolph Run

It Came Upon A Midnight Clear

Up On The Housetop

MERRY
CHRISTMAS



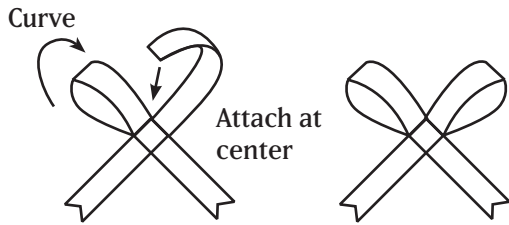
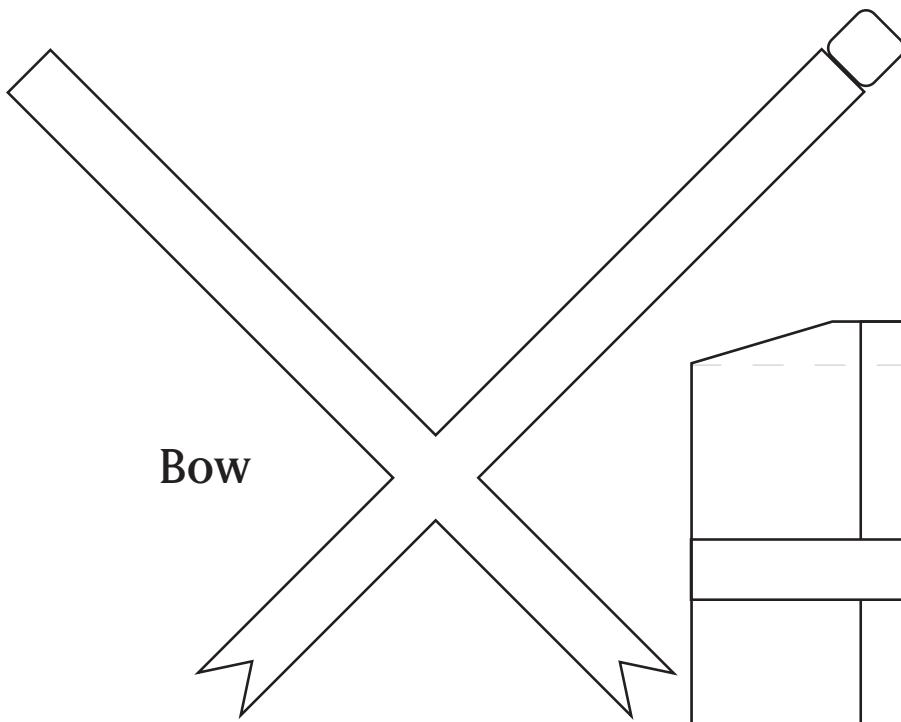
MESSER
Financial Group

HAPPY

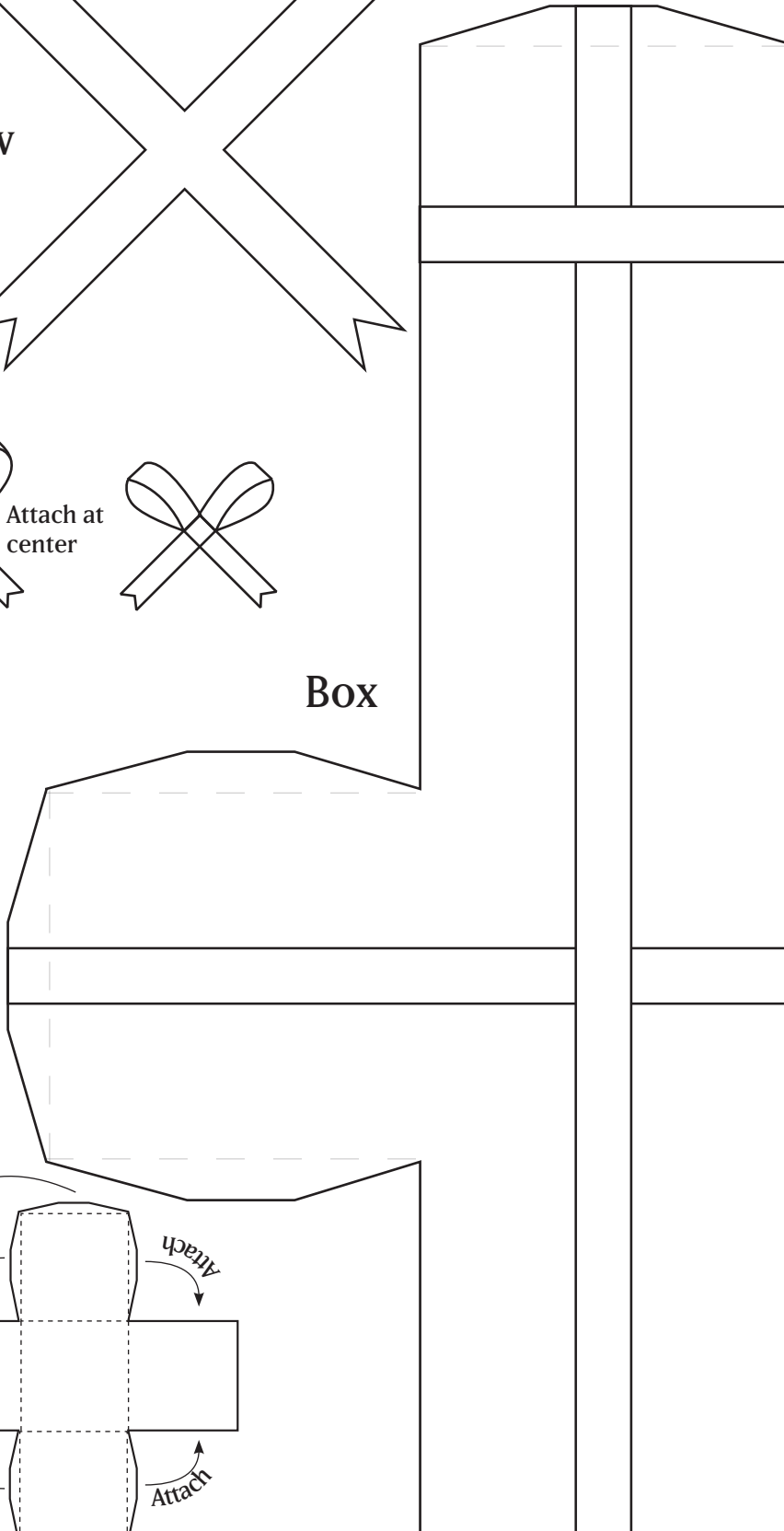


HOLIDAYS

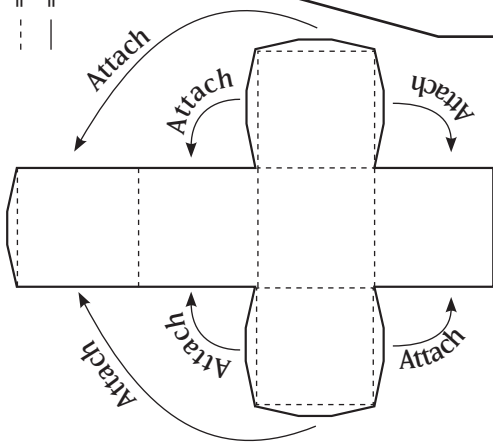
MESSER
Financial Group



Box



--- = Fold
 — = Cut



- Step 1. Decorate the box and ribbon before cutting.
- Step 2. Cut around the edges of the box and the bow.
- Step 3. Fold the tabs of the box inward, then crease the sides of the box
- Step 4. Fold the box together, gluing, taping, or stapling the tabs into place as you go. (See diagram at bottom left!)
- Step 5. Curve the long edges of the bow into the center, and affix them there. You can use the rounded square to cover the seem, and make it look like a 'knot.'
- Step 6. Attach the bow to the top of the box. Voilà! You have a present.



Step 1. Decorate your ornament before cutting. You can use the dotted lines to tell where the flaps will fit together!

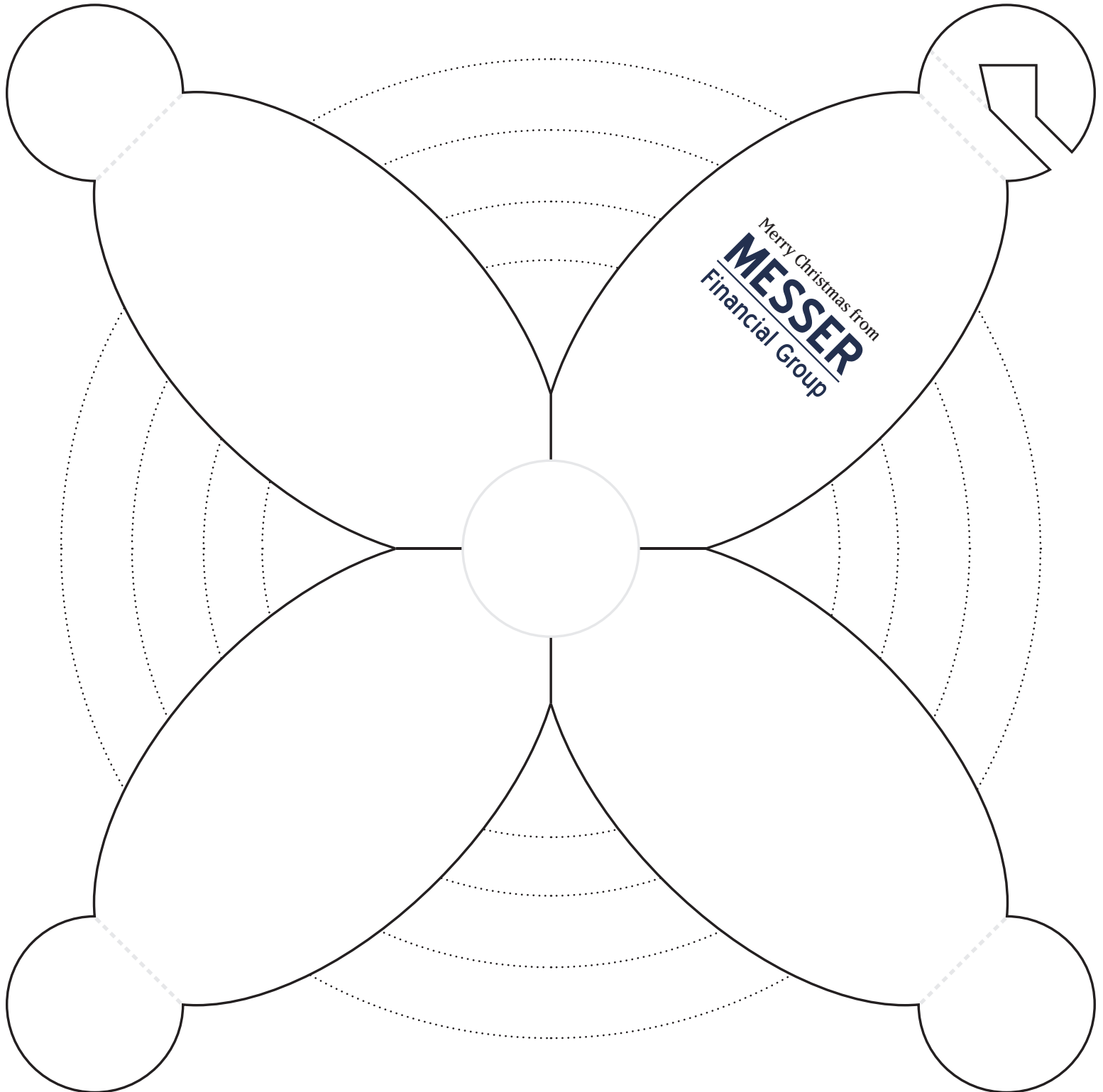
Step 2. Cut out the ornament, taking care to cut slits at the base, indicated by the black lines.

Step 3. Gently crease the tabs and hook on the end of each flap along the dashed lines.

Step 4. Curl each flap of the ornament outwards, so that the three tabs lay flat on top of one another. Glue, tape, or staple the three tabs together in the middle.

Step 5. Attach the thin strip of the hook (between the two dashed lines) to the rest of the tabs.

Step 6. Fold the hook up, and use to hang the ornament from your tree!



Step 1. Cut off these instructions along the line below

Step 2. Fold along the lines, so that the paper is in quarters

Step 3. Cut shapes into the edges of the folded paper. Don't cut the corner where the folds meet!

Step 4. Unfold the paper

Step 5. Let it snow!

Merry Christmas from
MESSER
Financial Group

Step 1. Decorate your trees

Step 2. Cut out the trees following the lines below

Step 3. Cut a slit into each tree along the indicated line

Step 4. Connect the trees by sliding them together along the slits. Put all three trees that have a slit on the bottom into the tree with the slit on top.

Step 5. Fan out the layers of the tree to create your 3D tree!

