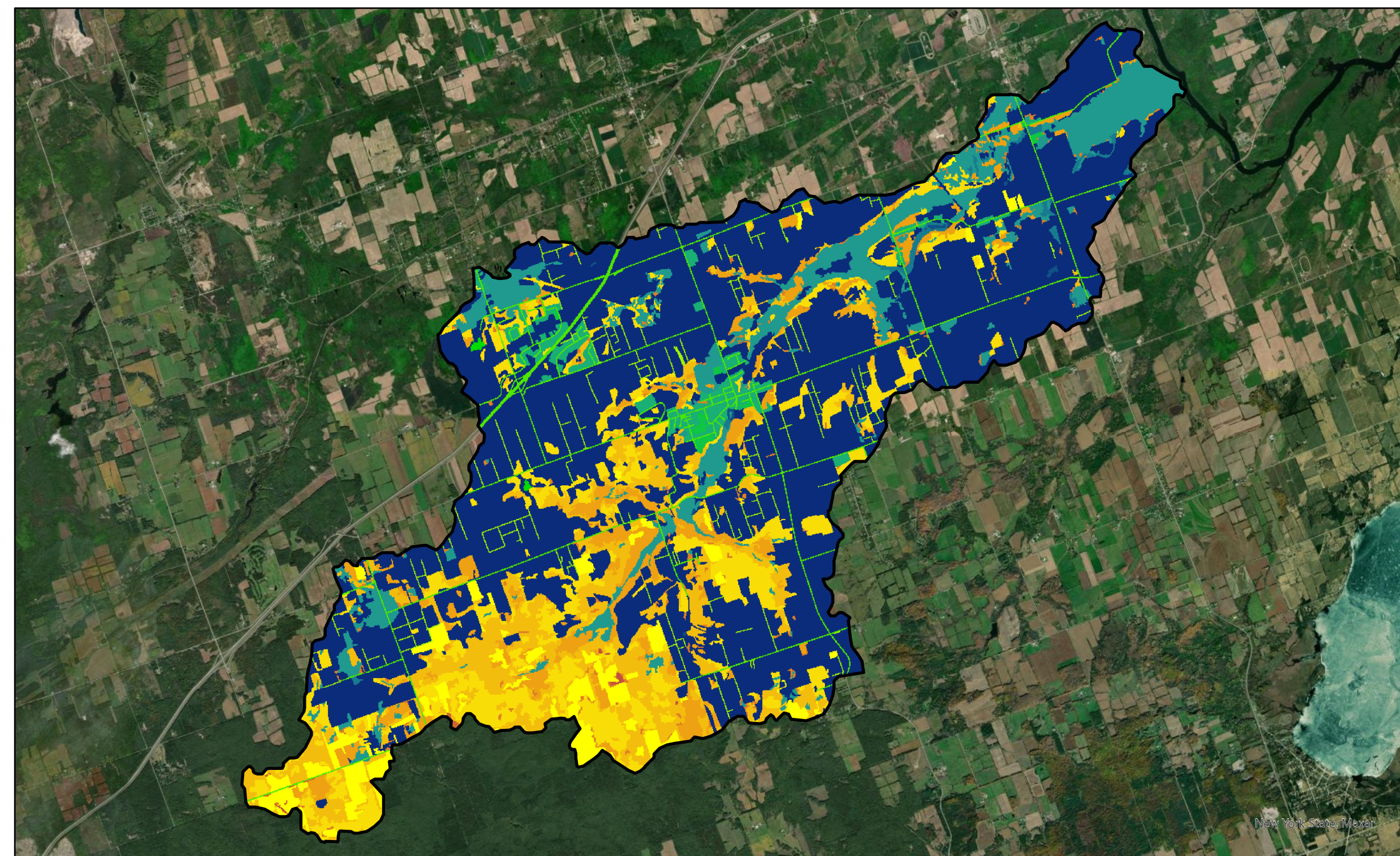




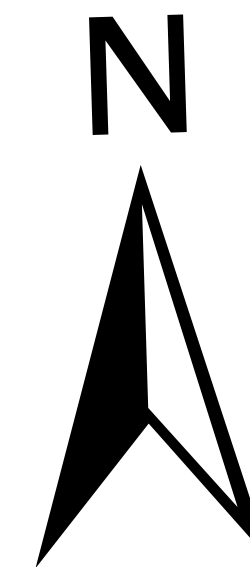
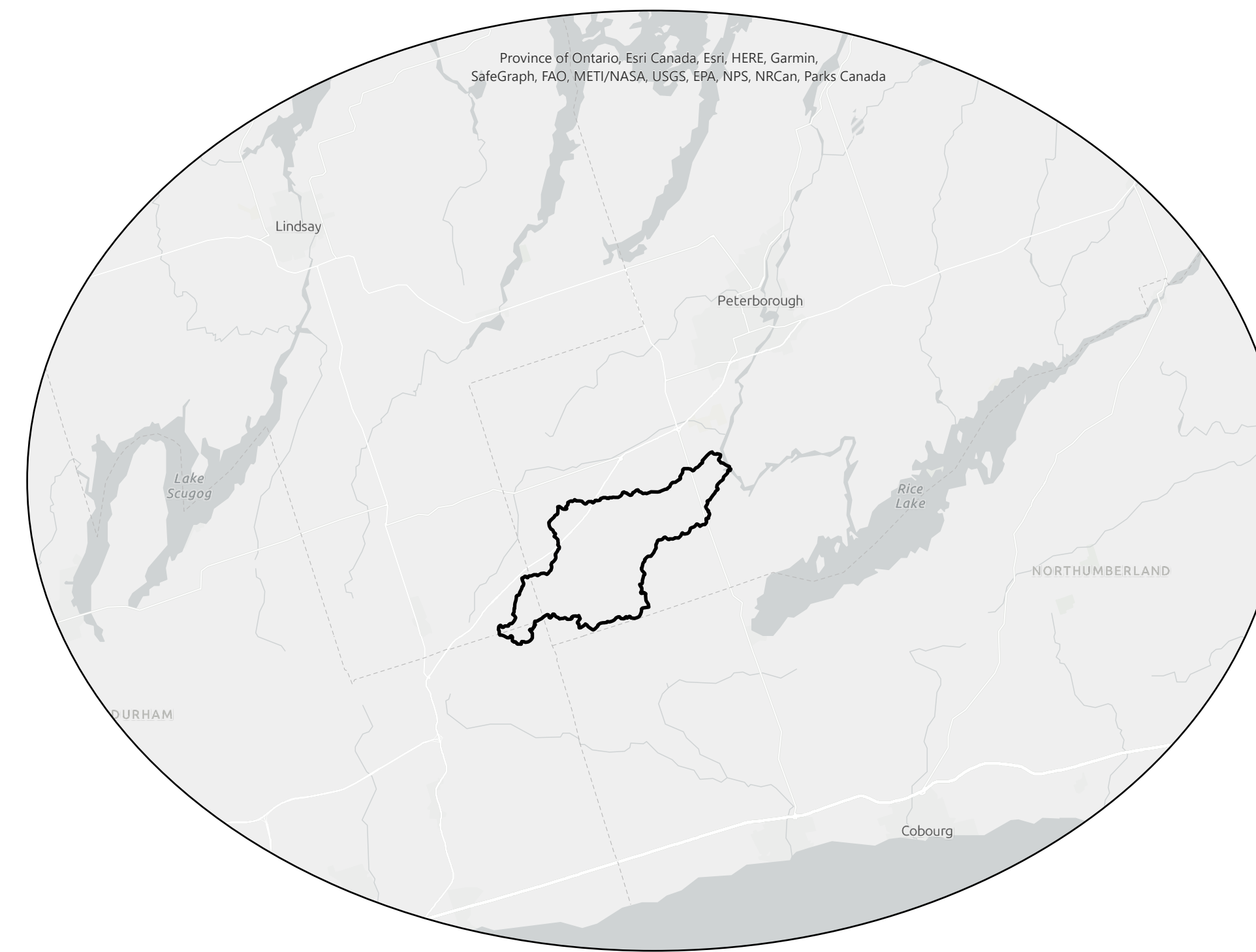
# SOLRIS Comparison - V1.2, V2 & V3

**SOLRIS V1.2 (2000 - 2002)**



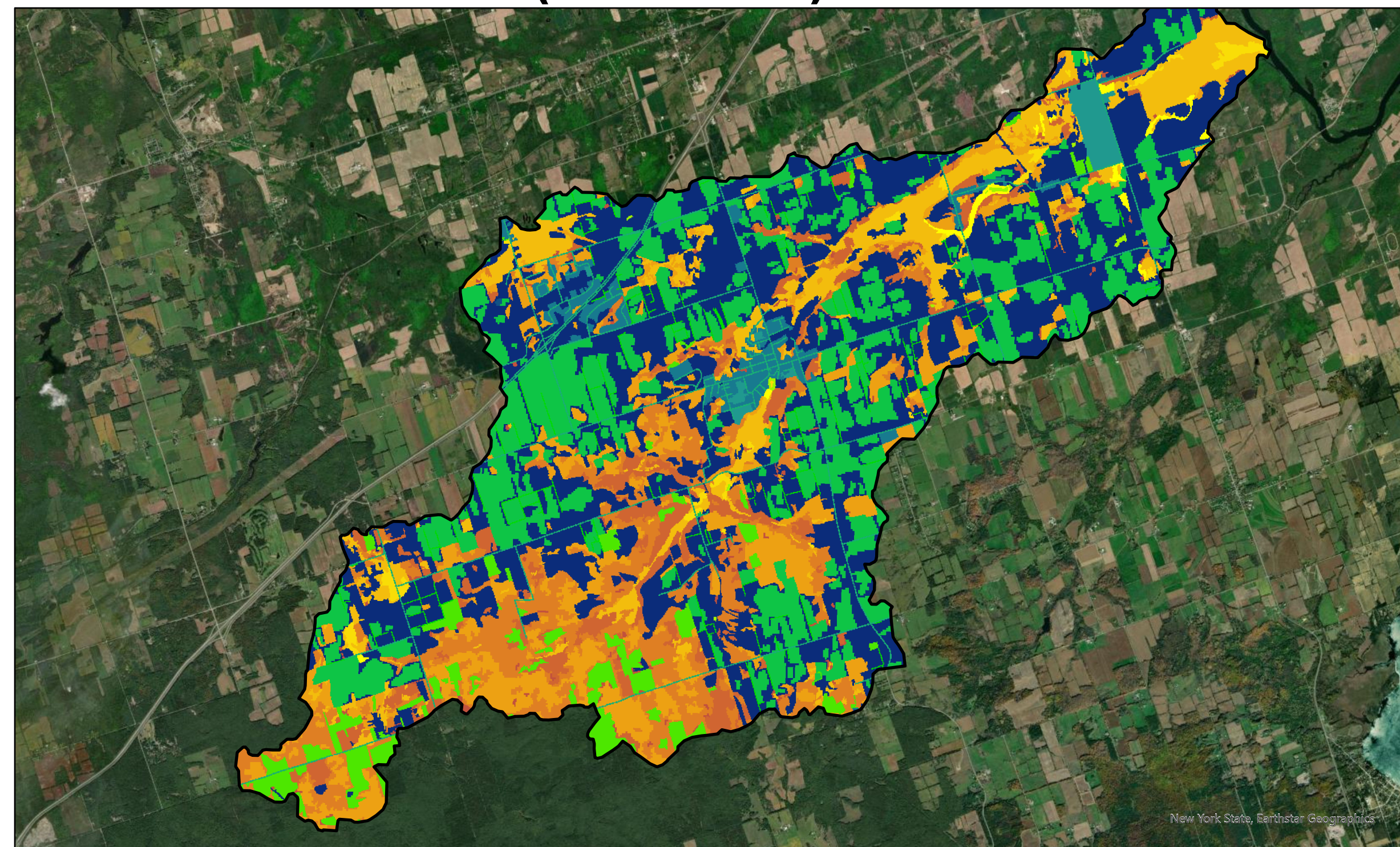
0 0.75 1.5 3 4.5 6 Kilometers

- BaxterCreekBoundaryFinal Layer  
 Value  
 Open Sand Barren and Dune  
 Open Tallgrass Prairie  
 Forest  
 Coniferous Forest  
 Mixed Forest  
 Deciduous Forest  
 Plantation - Tree Cultivated  
 Hedge Rows  
 Transportation  
 Extraction  
 Built up Area  
 Built up Area - Impervious  
 Swamp  
 Marsh  
 Open Water  
 Unidentified



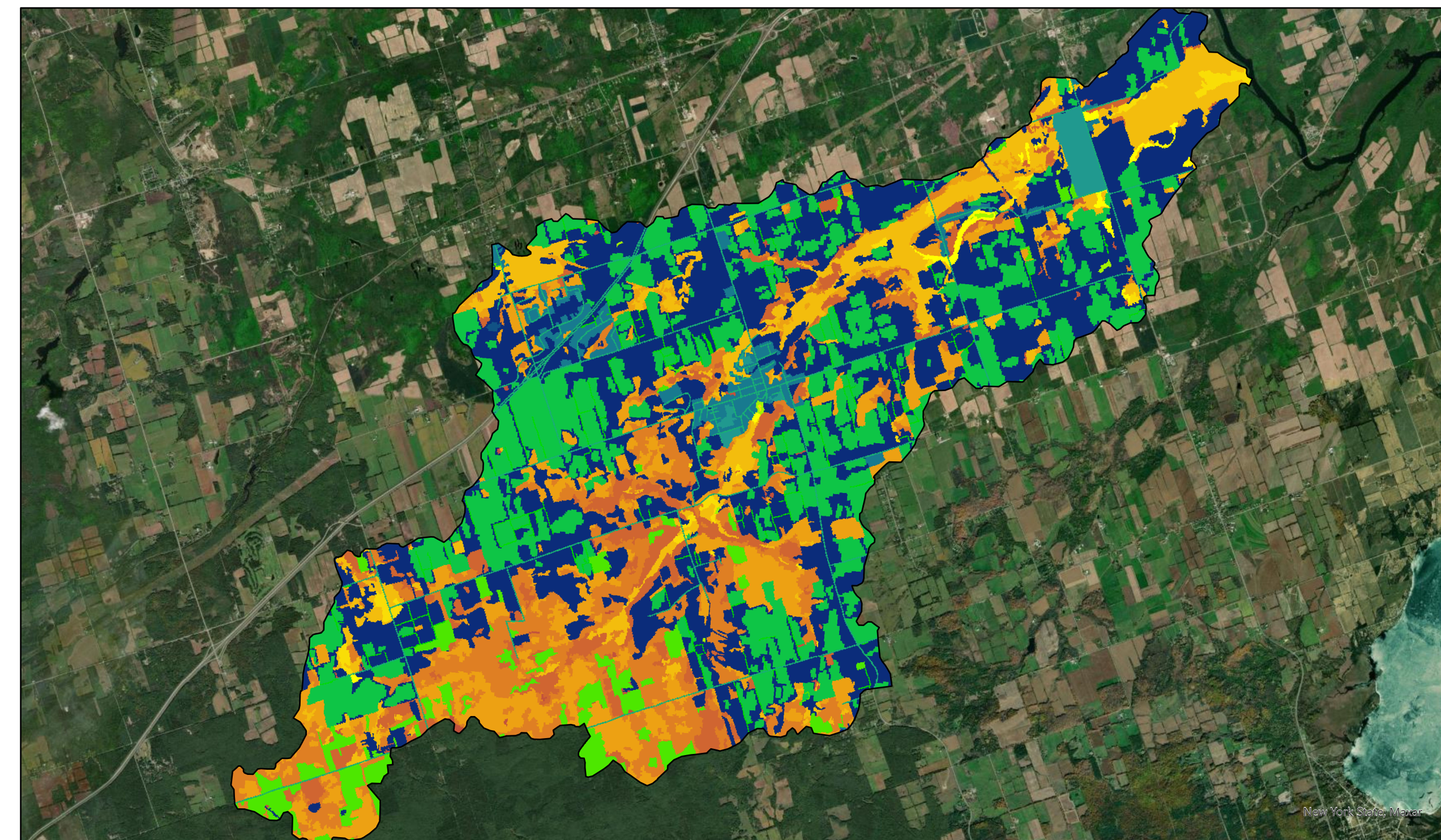
The Southern Ontario Land Resource Information System or SOLRIS is a regional, ecologically based inventory focused on land cover/ land use. It is based on the Ministry of Northern Development, Mines, Natural Resources and Forestry's Ecological Land Classification or ELC for Southern Ontario. Due to its constant updates, SOLRIS provides an extremely detailed geospatial information layer that allows the reporting of changes in natural and anthropogenic features, such as wetlands, forest life conditions etc. The data collection spans from 2000 to 2015 with the current 3 versions of the SOLRIS data.

**SOLRIS V2 (2009 - 2011)**



0 0.75 1.5 3 4.5 6 Kilometers

**SOLRIS V3 (2000 - 2015)**



0 0.75 1.5 3 4.5 6 Kilometers

- BaxterCreekBoundaryFinal Layer  
 Value  
 Forest  
 Coniferous Forest  
 Mixed Forest  
 Deciduous Forest  
 Tired Swamp  
 Thicket Swamp  
 Marsh  
 Open Water  
 Plantation  
 Hedge Row  
 Tilled  
 Transportation  
 Built Up Area - Pervious  
 Built Up Area - Impervious  
 Extraction - Aggregate  
 Undifferentiated