



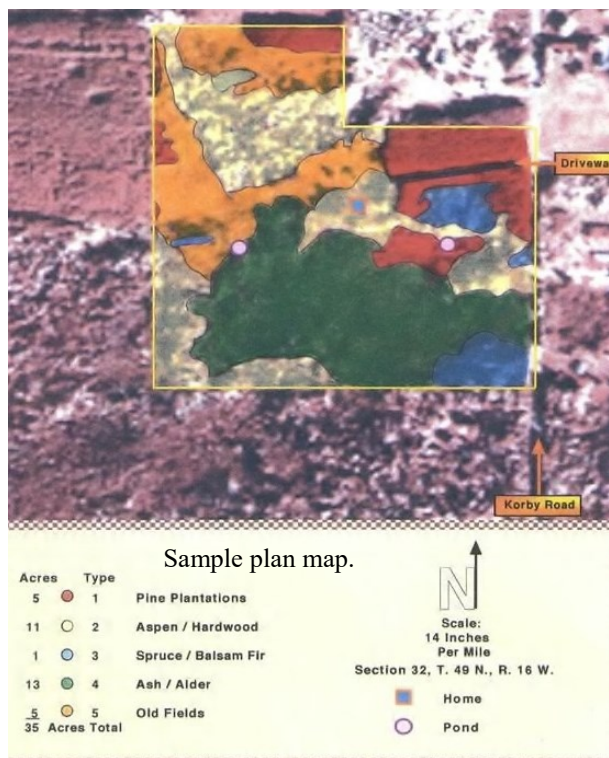
Conservation Practice Fact Sheet

Woodland Stewardship Planning

A **Woodland Stewardship Plan** is a woodland management plan prepared by a natural resource professional. The plan provides technical advice and long-range forest management planning to interested landowners. A qualified natural resource professional will meet with you, conduct a field inventory, assess specific land factors and complete the plan. Plans are designed to meet your goals while maintaining the sustainability of the land.

Why have a plan?

- Plans help you plan for the future condition of your forest.
- A qualified natural resource professional walks your woods with you to discuss your goals and answer your questions.
- A current plan is needed to be eligible for property tax relief assistance.
- Funding may be available for some projects such as wildlife habitat improvement or forest management.



What will my plan look like?

The plan provides a comprehensive overview of your land including an aerial photo, a map of the timber types and plant communities. The plan outlines your goals, the resources on your land and recommends management options such as:

- Planting trees
- Building trails
- Enhancing wildlife habitat
- Thinning and release cutting
- Harvesting timber

These recommendations are built around your goals and the natural capacity of the land.

A sample plan map is shown to the left.



Did You Know?

Landowners with forest stewardship plans are eligible for cost-share and tax reduction programs. Some of the programs can provide funds for wildlife habitat improvement or erosion control. Ask your plan preparer for details.



808 3rd Street
Carlton, MN 55718

Who qualifies and what is the cost?

Landowners with 20 or more acres of forest, brushland, wetland or unused fields qualify for a plan. The plan fee is \$7 per plan acre + a \$200 base fee. Landowners who enroll in SFIA or Managed Forestland tax classification usually make that back in a few years.

I have my plan; now what?

After your plan is completed your plan preparer can help with implementing your plan's goals and recommendations. You can also apply for a property tax reduction or enroll in an annual payment program.

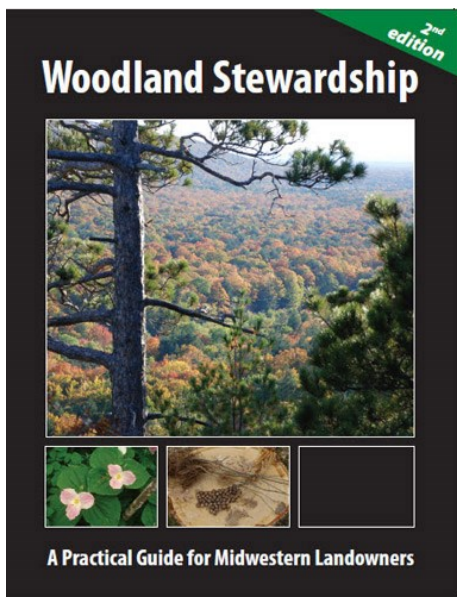
What are my obligations when I have a plan?

None. And you keep control of what's done and who has access. If you enroll in tax reduction, annual payment or pursue further assistance beyond your stewardship plan there may be requirements to meet.



Typical forest stewardship lands: unused fields, brushland, and woods.

A forest stewardship plan is a must for every landowner of 20 or more wooded acres, and it is very affordable.



Updating an Existing Plan

Landowners with plans over 10 years old are encouraged to update their plans with a qualified natural resource professional to continue to be eligible for property tax relief programs. New and updated plans include the book, ***Woodland Stewardship: A Practical Guide for Midwestern Landowners***, with chapters on wildlife habitat, tax tips and timber harvest.

Did you Know?

Turkey and grouse are attracted to high bush cranberry, oak and American hazelnut. There are several programs available to help with implementing plan goals including wildlife habitat and erosion control.

Visit us at www.carltonswcd.org and find us on Facebook

Getting Started Managing your Forest

The first step in getting started is to schedule a free site visit with a Carlton SWCD conservation technician to discuss the goals and objectives for your land. Learn more about the various programs available to individual landowners by **calling 218-384-3891** and get started today!