

THOMAS H. ERB & SONS PREVENTATIVE MAINTENANCE GUARANTEE

The technicians at Erb's can keep your grinder pump working

We stock a variety of grinder pumps & parts in our service vehicles and at our shop in order to provide our customers with quick service and repairs. Call us for all of your grinder pump needs.

What can be worse than sewage backing up into your home?

A grinder pump that is not being maintained is only a short step away from creating a backup in your home. Now is the time to be added to a routine maintenance program provided by Thomas H. Erb & Sons, Inc.

An inspection of your system can pinpoint potential problems that can be caught and prevented.

There are many types of pumps for waste water on the market and the folks at Thomas H. Erb & Sons, Inc. can provide service for them.

Our service includes:

- Control panel repairs and replacement
- Ejector & Grinder pump work
- Effluent pump installations and repairs
- Sump pump installations and repairs
- Pump cleaning and maintenance

WE ARE CELEBRATING 50 YEARS OF SERVING LANCASTER COUNTY!!

CALL US TODAY! Don't Wait Until It's Too Late!

Septic Tank Cleaning & Maintenance Services
Grinder Pump Service & Repair
Septic System Repairs
Sewer Pump Repairs & Installations
TV Camera—Pipe Line Inspections
Onlot Wastewater Treatment System Designs

erbsepticsservice.com



erbs@ptd.net

THOMAS H. ERB & SONS

268 Sego Sago Road, Lititz, PA 17543

717-626-5591

erbsepticsservice.com

erbs@ptd.net

GUIDE TO GRINDER PUMP SYSTEMS



Sewage System Specialists

Offering Complete Professional Services

Septic Tank Cleaning & Maintenance
Grinder Pump Cleaning & Maintenance
Septic System Repairs
Sewer Pump Repairs & Installations
TV Camera—Pipe Line Inspections
Onlot Wastewater Treatment System

268 Sego Sago Road, Lititz, PA 17543

717-626-5591 | erbsepticsservice.com

HICPA# PA012665

UNDERSTANDING YOUR SYSTEM

What is a Grinder Pump?

A grinder pump works like a household garbage disposal, but on a larger scale. It grinds up wastewater produced in your home (i.e. toilet use, shower, washing machine, etc.) and pumps it into the public sewer system or to a higher elevation.

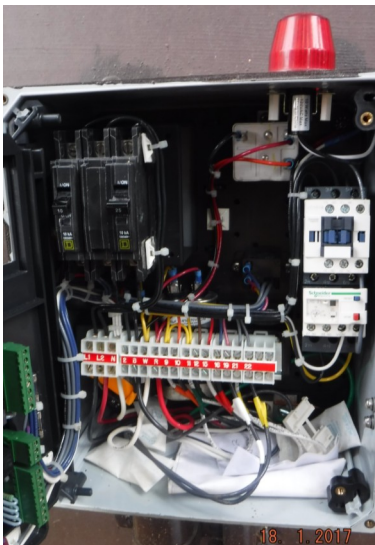
How does the Grinder Pump work?

A grinder pump is placed in a tank (or basin) that is buried in a convenient outdoor location on a homeowner's property. The tank provides wastewater holding storage capacity. When water is used in the house, wastewater flows into the tank. When the wastewater in the tank reaches a pre-set level, the grinder pump automatically turns on, grinds the waste, and pumps it out of the tank via the homeowner's on-site sewer service line and into the public sewer system. A grinder pump will normally run for one or two minutes and automatically turn off when the tank is emptied. The pump is powered by electricity and is connected to a control panel.

Why do I need a Grinder Pump?

Wastewater normally flows downhill by gravity through the sewer system.

However, if your residence is at a lower elevation than the sewer main, you will require the use of a pump to force the wastewater up to sewer main.



GRINDER PUMP MAINTENANCE

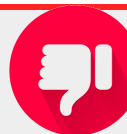
DO'S & DON'TS



-Have your Grinder Pump unit cleaned and inspected at least once a year, unless using a garbage disposal, then every 6 months.

(Garbage Disposals are Not Recommended)

- Keep records of cleaning and maintenance.
- Use as many bio-degradable products as possible.
- Repair leaking faucets or other plumbing fixtures immediately. Routinely check your toilet flush valve (flapper) to be sure water isn't running continuously.



- Do not wait for signs of malfunction.
- Do not plant shrubs or trees near the grinder pump unit.
- Never connect a sump pump to sewer lines. Doing so is a violation of most Plumbing Codes & Environmental Codes and will decrease the sewer main's flow capacity.
- Do not pour the following items down drains or flush down toilets: Grease, explosive or flammable material, kitty litter, aquarium gravel, strong chemicals or toxic, caustic or poisonous substances, bath bombs, wipes or diapers, feminine products, paint, oil, plastic objects, etc.
- Do not push the overload (or override) button in the control panel more than once in a 15 minute period. By doing this it can burn up the pump.
- Do not allow heavy equipment or vehicles to park or drive over top of the grinder pump unit.

PREVENTIVE MAINTENANCE

What can I do to protect my grinder pump?

A properly maintained grinder pump should be able to handle wastewater from the kitchen, bathroom, laundry, etc. However, some chemicals and substances can adversely impact a grinder pump and may cause safety hazards. Please check the labels on all chemicals before using/disposing.

What are the costs associated with the maintenance of a grinder pump?

Your grinder pump system should be inspected at least once a year. The service typically costs between \$175 to \$250. Maintenance costs are much more affordable compared to the expense of repairing or replacing a grinder pump system, which can cost thousands to tens of thousands of dollars.

CORRECTIVE MAINTENANCE

What else can I do to help maintain my system?

There are a few signs of a grinder pump system malfunction. If you discover any of these warning signs, call our office immediately.

One call could save you thousands of dollars!

- Wastewater backing up or gurgling into household drains.
- Strange clicking noises from control panel.
- Alarm going off or alarm blinking.
- A strong odor around the Grinder Pump Tank.
- Bright green, spongy grass appearing on the soil surface around the Grinder Pump Tank.

With proper care and maintenance, your Grinder Pump system will serve your home for years to come.