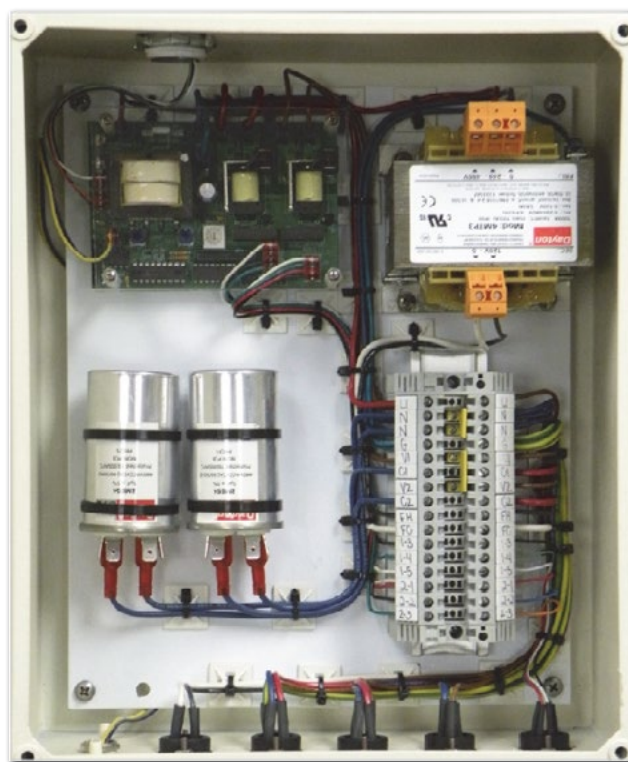


The DS-4C LCU is used to control the Ice Quake System on antennas 2.1 and larger. The Ice Quake System will be automatically activated using a moisture/temperature sensing unit. This unit closes a 30amp 1 pole relay in the event that there is moisture present and the temperature is 42 degrees or below. A second 30 amp 1 pole relay closes in the event there is moisture only present to control Ice Quake System (Rain Quake) for Ka-Band Antennas.

The DS-4C Rain/Snow Sensor Controller

- Automatic activation means lower de-icing costs
- Reliable rain and snow detection
- Full 30A @ 240VAC control
- Field strap for 100-120/200-240VAC operation
- Replaceable precipitation sensor
- Easy installation, full access to electronics
- 8 different functions, 1 part number
- Adjustable temperature trigger point
- Adjustable moisture sensing sensitivity
- Adjustable delay off cycle
- Selectable low temperature cutoff
- Smart "Manual On" operates for one delay off cycle
- Housed in a NEMA 4x plastic enclosure



UL and CE Certified

