



Phoenix Artists Guild

Volume 147

January, 2024

January

PRESIDENT'S MESSAGE – January 2024

Happy New Year to all!

The onset of each New Year is a moment for reflection on the past year and the formulation of plans for the future. It carries a special magic, promising new opportunities and the potential for positive change in our lives.

I wish you 12 months of success, 52 weeks of laughter, 365 days of fun, 8760 hours of joy, 525,600 minutes of good health and 31, 536,000 seconds of happiness.

There will be many opportunities to volunteer for officer positions and committee chairmen positions starting in the fall. Please consider helping out PAG to continue to be a great organization. Please tell a current board member if you are interested.

Hope to see you all at the meeting.

Cindy Chambers
PAG President



Members Activities:



January – Combining patterns and ideas.

Your Challenge: Get creative as you combine the following elements in 1 piece of art:

1. Geometric patterns
2. Plants
3. Bird or Birds



February – Try adding collage to your art this month. Your Challenge: Paint as you normally do but add a bit of collage to it. Or do a collage from the beginning using tissue paper, magazines, newspapers, or other items.



Creative Corner

What Does Your Palette Tell About You?

By Elaine Waters

I have NO Idea why I haven't written about this before. It is so important and says so much about us as artists. I have had MANY students.... And each palette tells a story about their artist.

When you are laying out your colors on your palette, always use the basic same plan. My personal plan is: I start at the top left with yellows, to reds at the top. On the top right side working down, purples, blues. On the left side yellows on down through the earth colors and then on the front edge near me, I put dirty neutrals, then any greens. I reserve the center of the palette for white. When you have a plan, you won't always be looking for a color and because the transparent dark colors often all look alike on a palette you will locate it quickly while you are painting. I am not saying you should use "my" palette just that you should be consistent with how you set up your own palette. If you are a new artist you should put out a warm AND a cool version of at least the primaries.

1) A large palette.... With BIG squirts of paint from the tubes.... Not in any particular order... The artist wants desperately to use all of that paint in a painting... but has never taken the time to find out what those wonderful colors will do when they are mixed with white, complementary colors or other colors. The Artist has not taken the time to investigate color theory such as: complimentary, analogous, split complimentary, etc. So. the artist, just keeps piling more paint on their canvas.... Hoping it will help them to create something wonderful.

2) A decent size palette: with all the basic colors (in little bitty dabs) placed in an orderly fashion...Perhaps even with the names of the paint colors written on the palette or on the sides of the palette. Another case of the artist never taking the time to get to know the qualities and capabilities of their tube colors. This artist is usually afraid of messing up their palette, and usually won't know the difference between Alizerine Crimson, Cad Red Light, Permanent Rose, Rose Madder and Terra Rosa , **SIMPLY BECAUSE THEY HAVE BEEN TOO LAZY TO INVESTIGATE THE QUALITIES AND CHARACTERISTICS OF PARTICULAR TUBE COLORS!** They write down color information in a "handy" little notebook.... But expect one little formula for mixing a paint color to always work.... Or expect an instructor or a "HOW TO PAINT" book to give the exact formula for a given color.... That is like expecting a Cookbook to tell you how Salt tastes!

3) An adequate palette.... But showing only small dabs of a very few colors on it. The artist does not want to waste paint, so they only put a few colors out, because they think they need **ONLY** those colors today in their painting session. You, the artist, and your painting, are suffering and will **NEVER** reach your full potential because you are afraid to use the paint. Your palette is your tool of trade... use it well. Keep paint fresh, know your colors, know **AT LEAST SOME OF THE BASIC QUALITIES OF EACH COLOR**, Take time to **PLAY** with your paints so that you will have an idea of what the color will do and what it looks like. Understand "warmer than" and "cooler than". Know about transparent colors and opaque colors... Make value charts of your favorite colors, learn to use your reds side by side, but **NOT** mixed together, Same with the other primaries and in particular, the greens. You are the artist... it is up to you to develop your skills.

January Demonstrator – Ashwini Bharathula



Ashwini Bharathula (b.1984) is a representational fine artist working mainly with oils and she currently resides in Chandler, AZ. She was born and raised in South India. “Growing up, I loved to draw and sketch in my spare time. It was mostly Disney characters and figures from Indian mythology.” She received her formal education in the field of Materials Science and Engineering. After completing her Bachelor's degree at the Indian Institute of Technology Madras, she moved to the US in 2005 to pursue her Master's and PhD at The Ohio State University. There she happened to audit a painting class one summer for fun and has been hooked ever since. After getting her PhD, she worked in the semiconductor industry for a few years. “Even while working in the corporate world, I had this constant itch to paint.” She finally took the plunge and quit her industry job to explore something at the intersection of art and science. She first started a YouTube channel where she created and shared science video lessons. She then collaborated with TED-Ed (www.ed.ted.com) and helped create a few short movies that have garnered millions of views. “I also started painting more seriously around this time and eventually decided to pursue art full-time. The act of creating something realistic and beautiful from scratch brought a lot of joy to me.”

Ashwini's art education has been primarily through workshops at the Scottsdale Artists' School and books like Richard Schmid's 'ALLA PRIMA'. She has studied with Susan Lyon, Daniel Keys, Suchitra Bhosle, Louis Carr, Todd Casey, Ned Mueller and Gustavo Ramos. While she loves to paint a variety of subject matter from portraits to landscapes, her current focus is painting flowers and floral still-life arrangements. “The fact that there are endless possibilities of colors, textures and compositions that I can explore with this theme is exhilarating!”

Meeting Agenda

Monday, January 22, 2024
6 – 6:45pm – Critique by Julie Frye
6:45 – 7:15pm – Business Meeting
7:15 – 7:30pm – Social Time
7:30 – 8:30pm – Demonstration Featuring Ashwini Bharathula



Artist of the Month:

1st Place – Cindy Chambers

2nd Place – Nancy Donovan

Remember to only enter 1 piece of artwork each month. Also, once you have won, you can't enter another monthly competition during the current year. You are eligible for Artist of the Year, held at the May general meeting.

Aug. – Dean Grisson, Sept. – Pat Washburn, Oct. – Lois Miller, November – Cindy Chambers



January Birthdays



Carol France

Tonnie McBroom



ARIZONA ART ALLIANCE CALL FOR ART -- INTERPRETATIONS IX - PAG members are now able to apply for the upcoming AAA art show at WHAM.

The application dates are January 15 – February 12, 2024. The Exhibition dates are March 2 through March 31. Delivery date is March 1. Complete information is available at www.arizonaartalliance.com. Click on "Calls for Art" and then click on "Interpretations."

ARIZONA ART ALLIANCE REPORT – Grant Washburn PAG Rep.

Artist Information

ASCENSION LUTHERAN = Jan. 18-Feb. 5, 2024. Set up Jan 18, 10-11:30 a.m.; take down Feb. 5, 2024, 11:30 am - 12:30 pm... \$10.00 per first 2 entries, \$5.00 if you want to entry a 3rd and there is room to hang them. *No judging or reception.*

HOLLAND CENTER = April 8-May 20, 2024. Set up April 8, 9-10 a.m. (Hang 10-12). Take down, May 20, 9-10 a.m. May include ONE RIBBON (optional); *Reception = Sat (tba).*

Julie Frye currently has 3 art pieces showing at the Herberger.



Congratulations **NICE GOING!**
GREAT! Way to Go!
Yea! **FELICITATIONS**
CHEERS Take A **BEST**
BOW! WISHES!

Congrats to those who entered the Glendale Arts Council show.

Juried in: Joann Almich, Sheila Bellinger, Soonthorn Cheevasit, Julie Frye, Tonnie McBroom, Alika Kumar, Clarice McIlvain, Lois Miller, Elaine Waters and Robert Wood.

Those selling art works: Jo Allebach (2), Sheila Bellinger, Soonthorn Cheevasit (2), Nancy Donovan, Alika Kumar, Victoria Lansing, Clarice McIlvain, John Mansour, Sylvia Roberts and Elaine Waters (2).



Membership forms will be at each of the General meetings and on our website. Annual fees are \$50.00.



Please **remember** to submit your artwork for Back Page art.
Send to Cindy Chambers at: tees2others@gmail.com

Remember also to submit your artwork for Members Monthly Activity and Artist of the Month.



Outreach will be collecting non-perishable foods and supplies for Valley View Food Bank. Old glasses will also be collected.



Blankets for the Homeless

Please consider donating 1 or more blankets or throws to help the homeless stay warm. We will collecting them at the January and February general meeting

OFFICERS FOR 2023-2024

President	Cindy Chambers
1st Vice President (Program)	Julie Frye
2nd Vice President (Exhibits)	John Mansour
Treasurer	Paula Sandera
Recording Secretary	Jo Allebach

Corresponding Secretary

Sheila Bellinger



Open Positions for the 2024 -2025.

Officers: 1st Vice President, 2nd Vice President, Treasurer

Committee Chairmen: Social, Computer Articles for Newsletter



For just \$25.00 a year!!!

This includes one additional mid-year image exchange! Then you can change-out again. **Include it in your annual membership dues** – how easy is THAT?!

We are increasing traffic flow and visitors to our site and piquing their interests **WHEN THEY GET THERE!**

Julie Frye is now your webmaster, (Chuck and Alika Kumar assisting) so get **YOUR LINK** on the PAG website and get these advantages **WORKING** for YOU!

Just send the following info. to Julie Frye, juliefrye381@gmail.com), A JPG (**as least 300dpi**) of one of your pieces

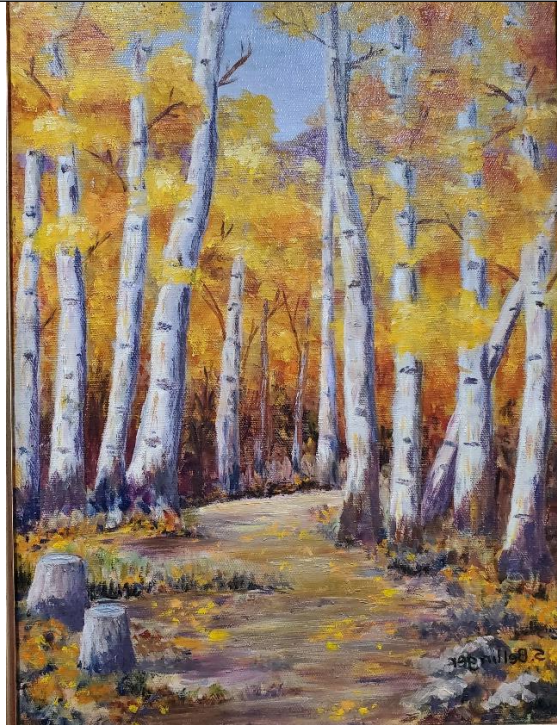
- The title of the piece
- unframed sizes, media
- Your name, email address, website link, (remember-link it back to PAG site, to increase traffic)

Organizations to which you belong.

BACK

PAGE

ART



“Autumn Walk “ Oil By Sheila Bellinger



Arizona Art Supply
The largest Fine Art Supply Retailer in the Southwest
Serving Arizona Artists for over 65 years.

**Is a proud supporter of Phoenix Artists Guild.
PAG Members Receive 20% Off All Non-Sale Items!**

www.arizonaartsupply.com
Phoenix—Tempe—Scottsdale—Sun City—Tucson

Meetings:

4th Monday of Month
AAG Building
18411 N. 7th Avenue, Phoenix

Contacts:

Cindy Chambers - President
Pat Washburn – Membership

Membership \$50.00 per year/May-April