



Baseline Photograph

11/7/89



Baseline Photograph

11/7/89



Starch-Iodine Sweat & Paredrine Pupillary Testing

11/20/89

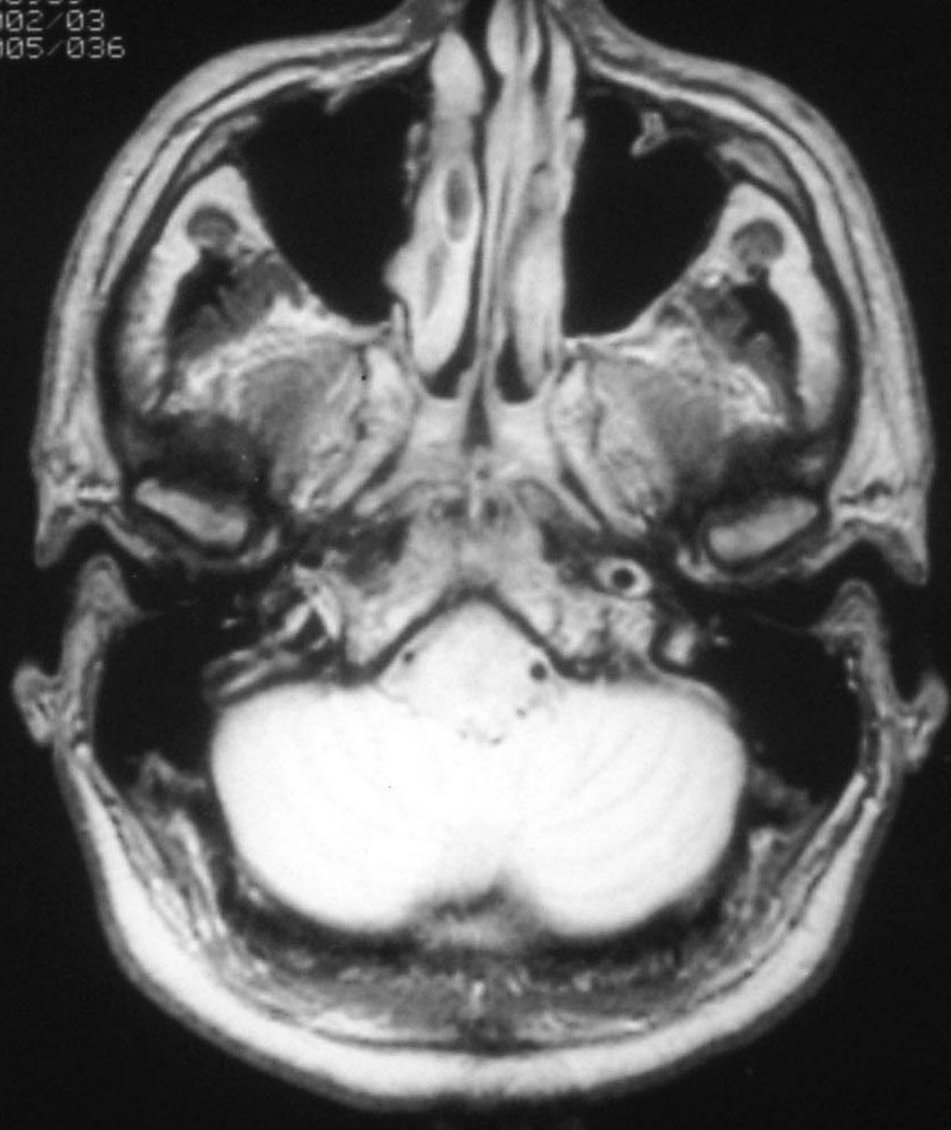
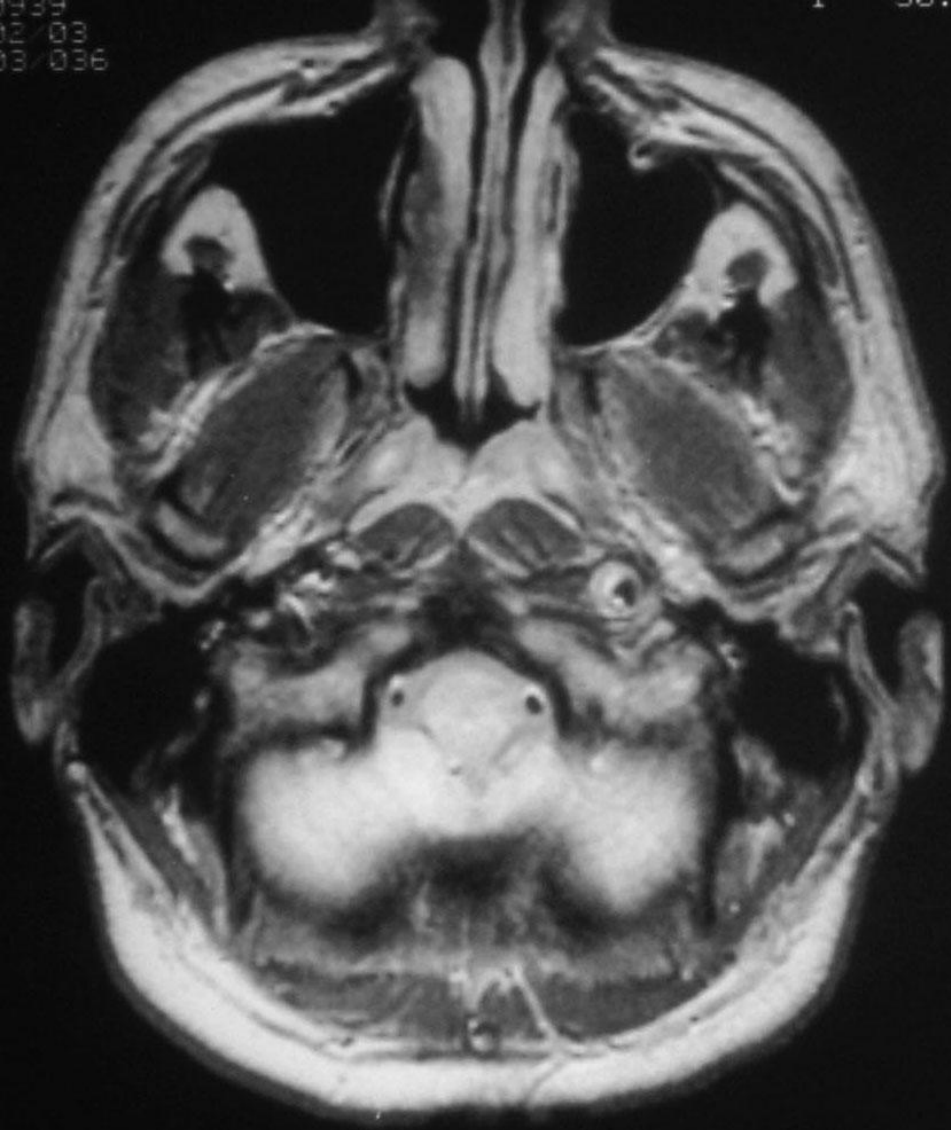


Starch-Iodine Sweat & Paredrine Pupillary Testing

11/20/89

102/03
105/036

102/03
105/036

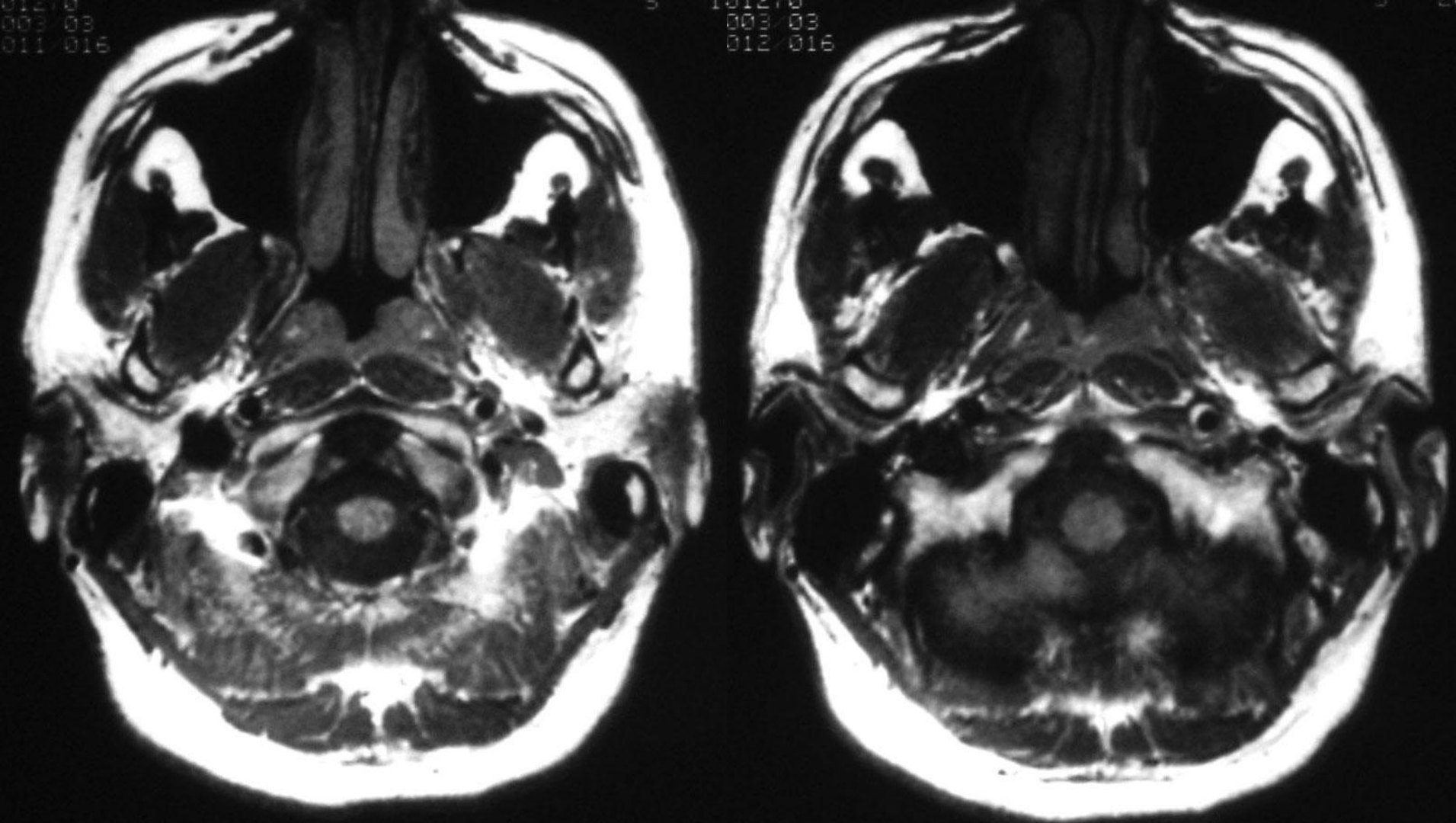


Horizontal T1W MRI with Gd

11/12/89

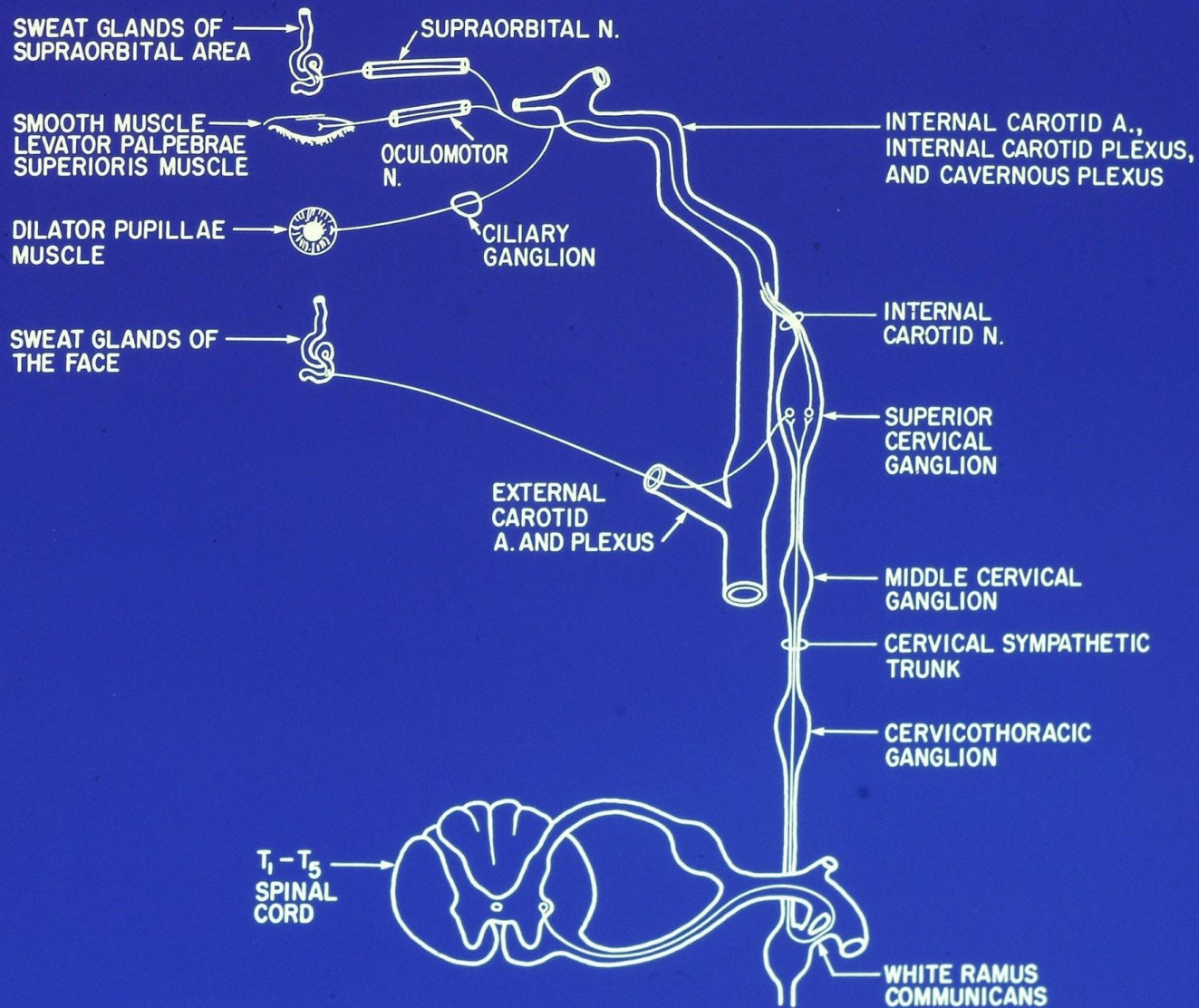
003/03
011/016

1012/0
003/03
012/016



Horizontal T1W MRI with Gd

11/12/89



SYMPATHETIC PATHWAYS INVOLVED IN THE PERICAROTID SYNDROME