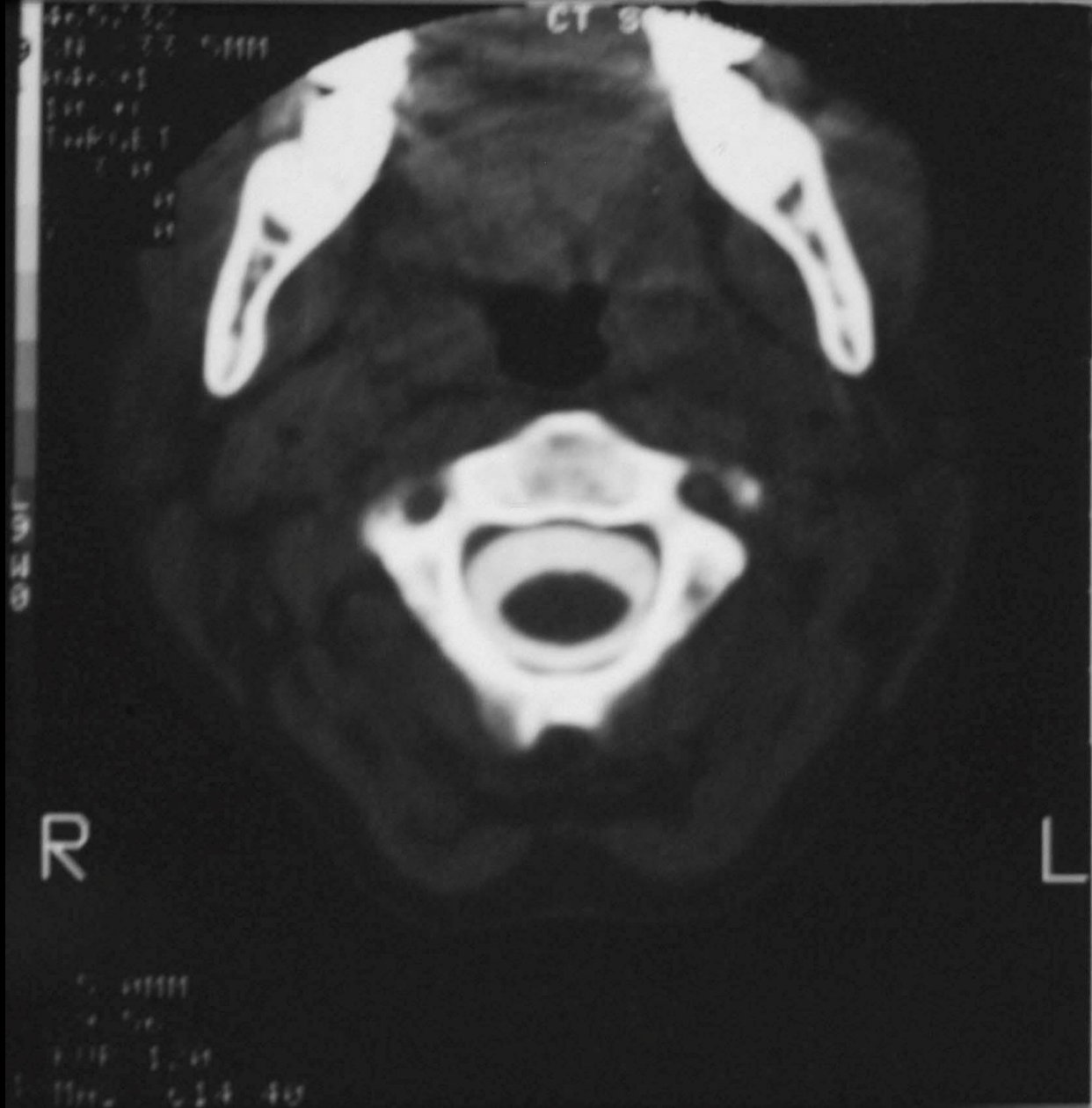


CT Scan: C1-2
(Just After Metrizamide Myelogram)



CT Scan: C3
(Just After Metrizamide Myelogram)



CT Scan: C3
(22 Hours After Metrizamide Myelogram)

Ser: 002/02
Ima: 005/009



Sagittal T1W MRI Scan

Stu: 02728
Ser: 003/03
Ima: 003/014

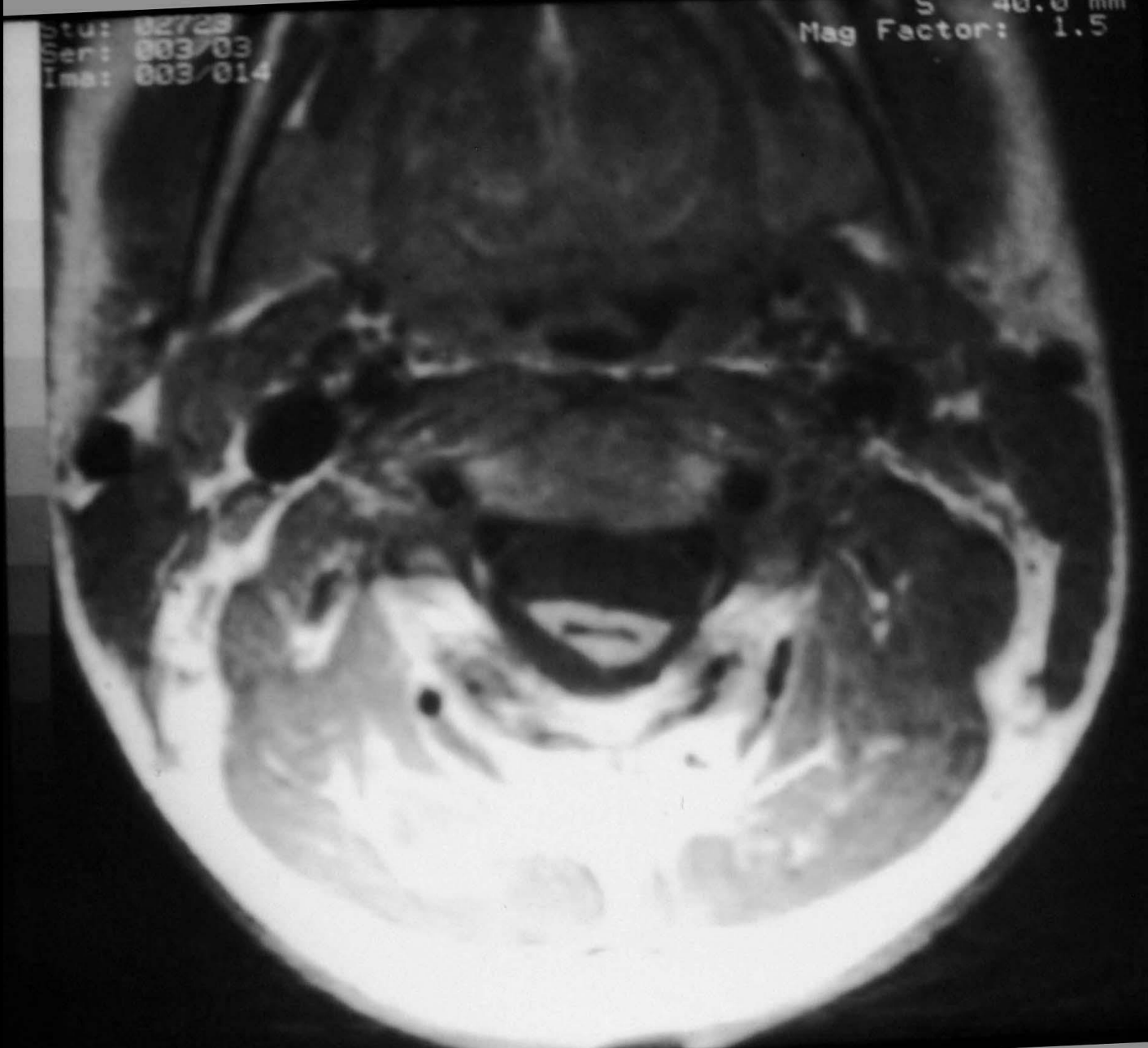
S 40.0 mm
Mag Factor: 1.5



Horizontal T1W MRI Scan: C5

Study: 02723
Series: 003/03
Image: 003/014

5 40.0 mm
Mag Factor: 1.5



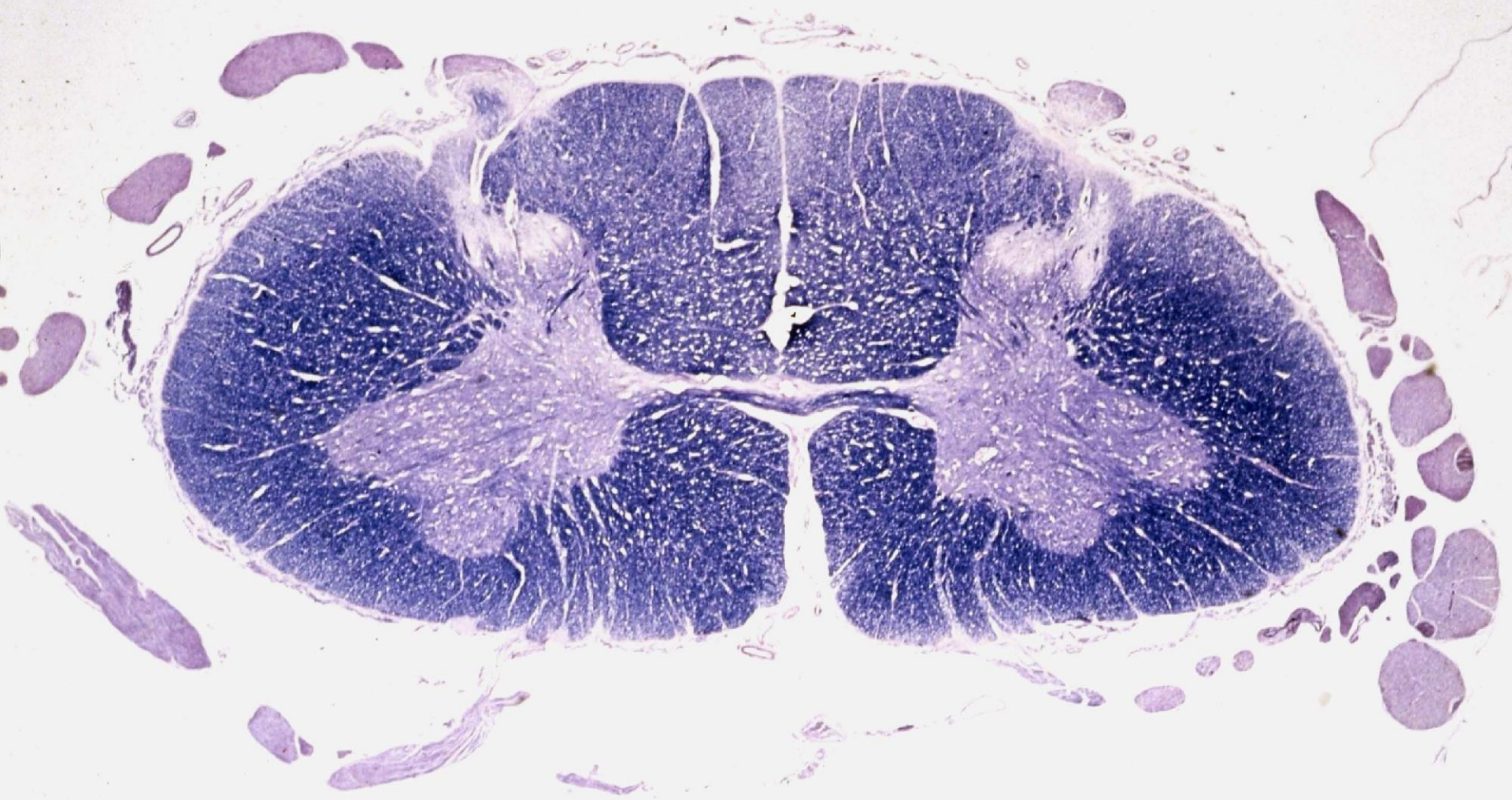
Horizontal T1W MRI Scan: C5

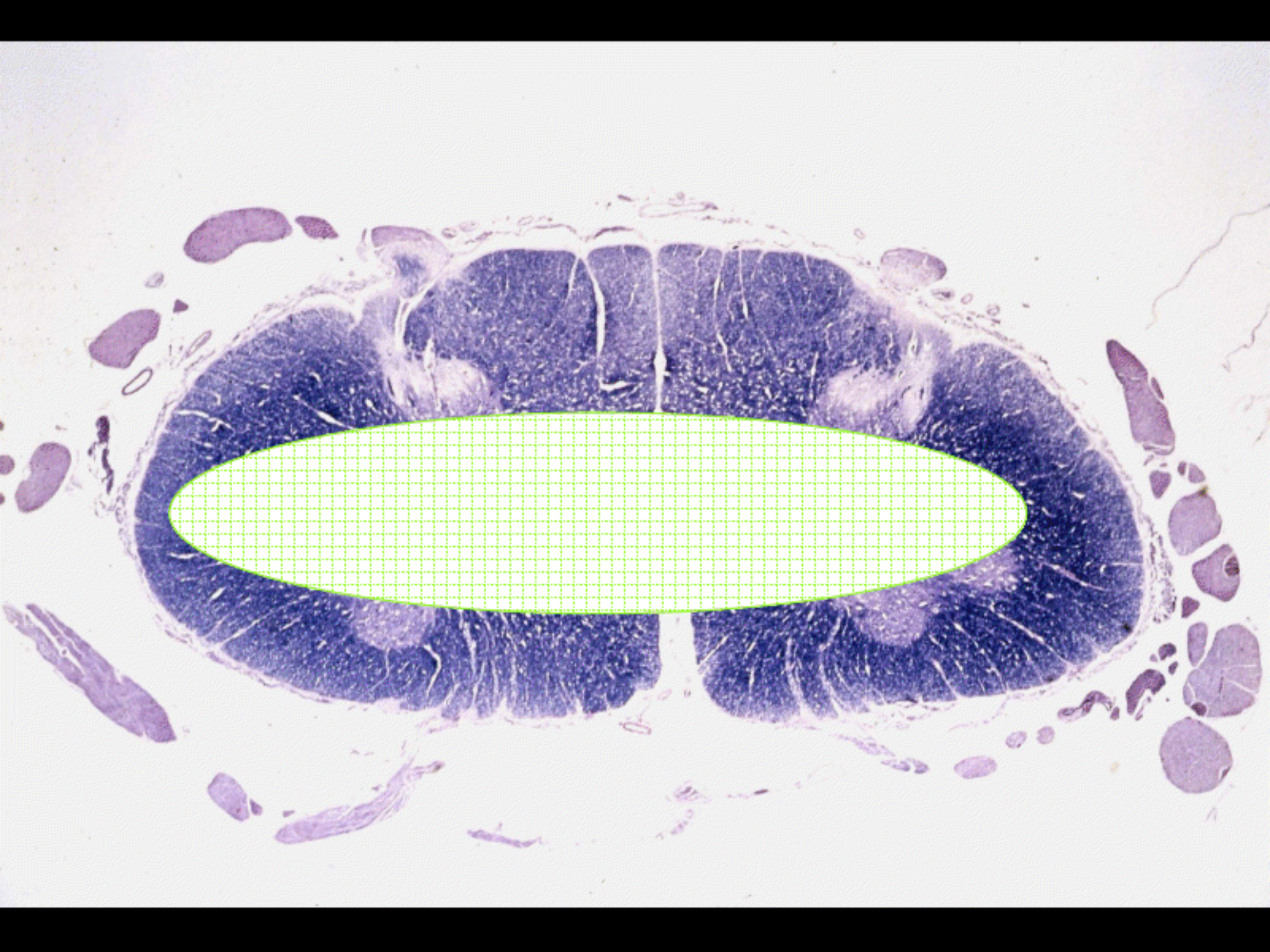
Study: 02123
Ser: 003/03
Ima: 004/014

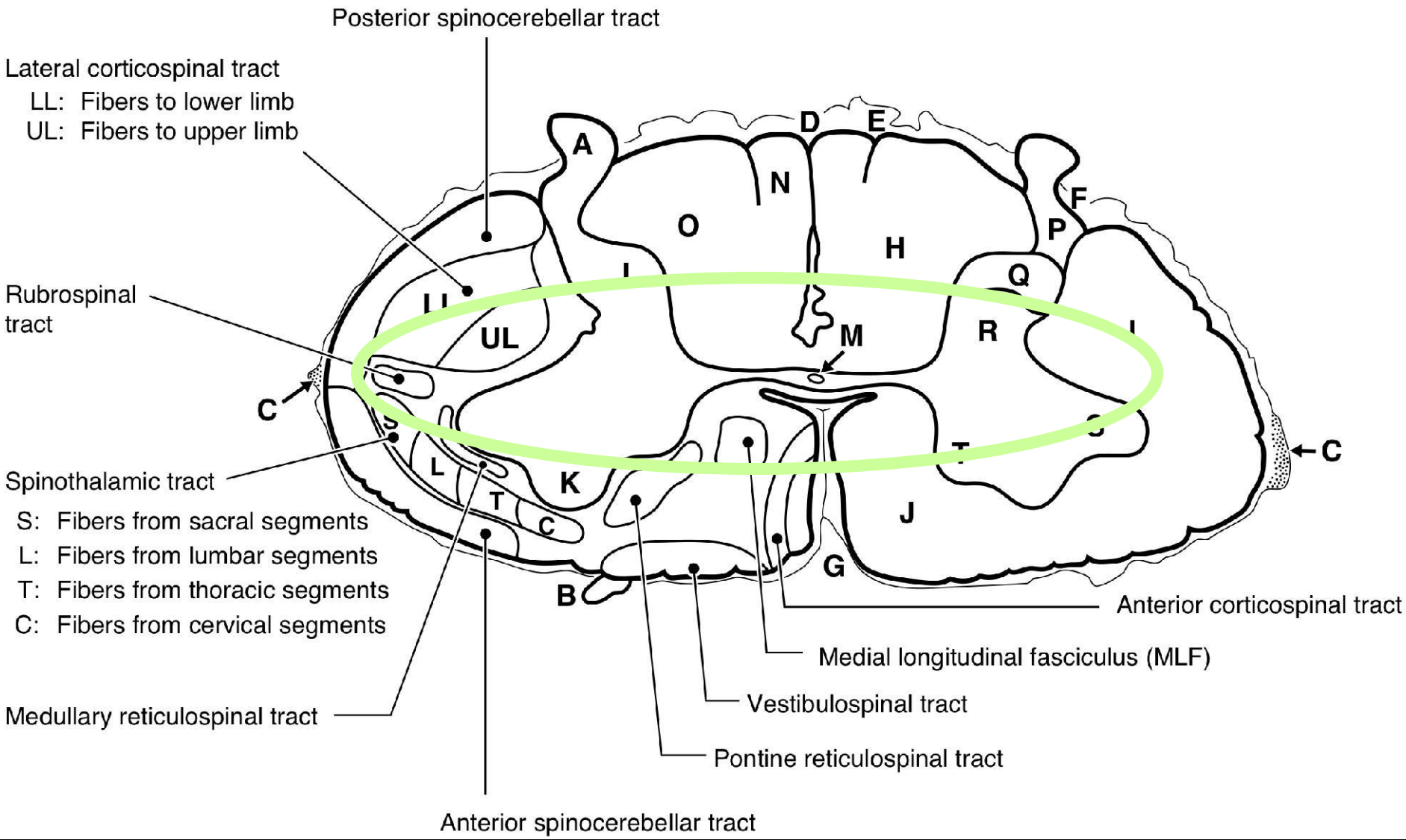
Mag Factor: 1.5

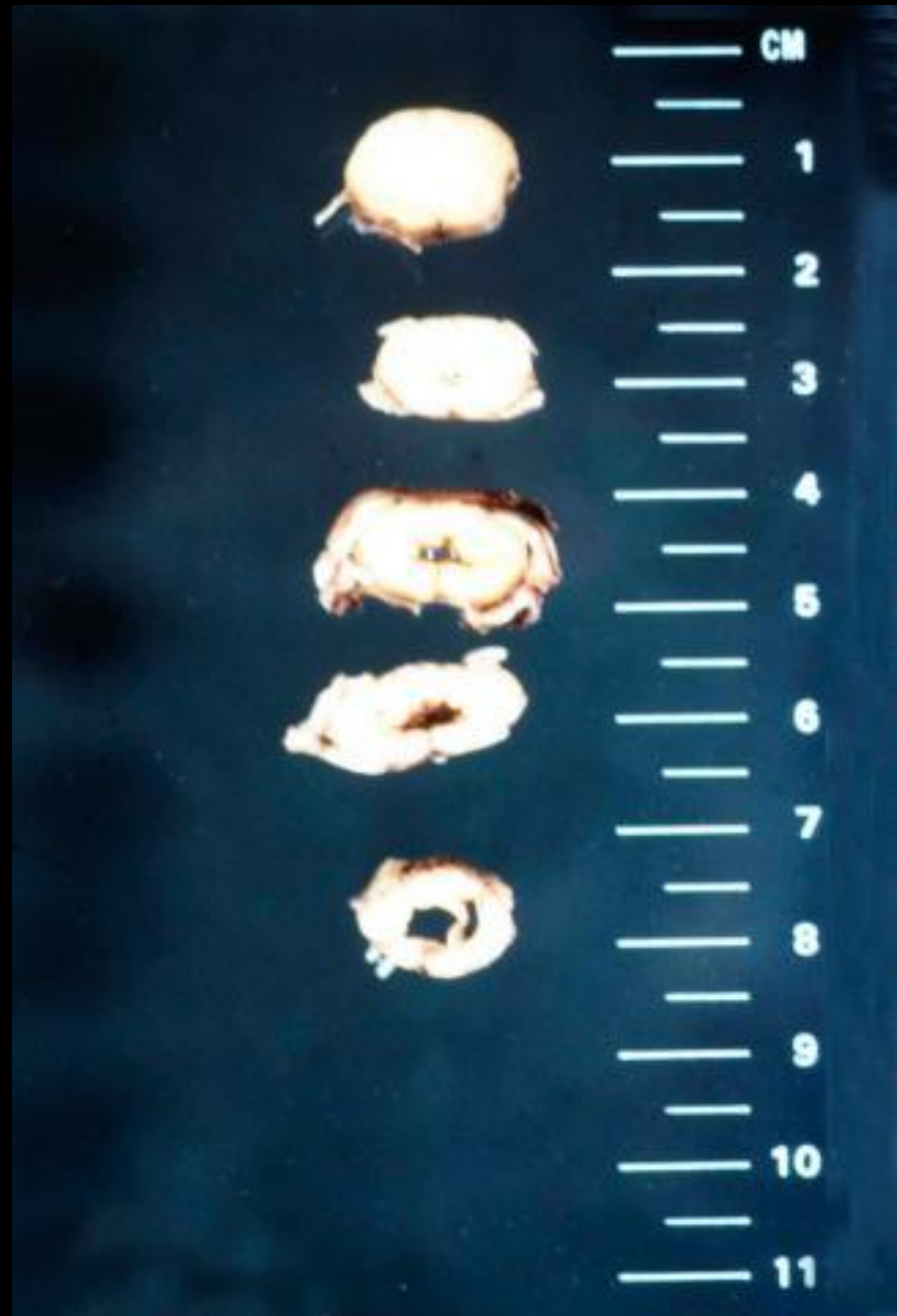


Horizontal T1W MRI Scan: C6









Syringomyelia



Syringomyelia