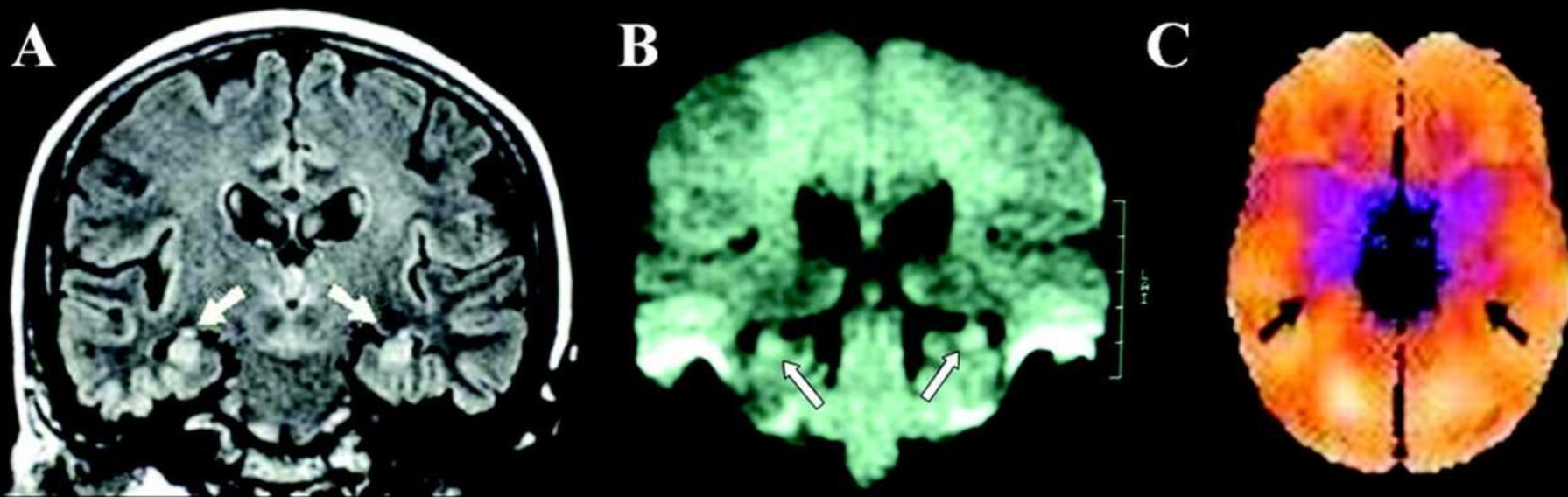


Brain imaging from a similar patient



Coronal FLAIR (A) and diffusion-weighted (DWI) (B) MR images obtained 48 hours after the onset of the amnesic syndrome, showing increased signal and diffusion restriction in the hippocampus bilaterally (arrows) (Note: DWI images in B do not show well). (C) SPECT images, performed in the same time window, revealing hypoperfusion in the medial temporal lobes bilaterally. (These images are taken from: Di Filippo M, Calabresi P. *Neurology* 2007;69:493.) (All of the references listed show images of patients within the first 72 hours of an episode of TGA.)