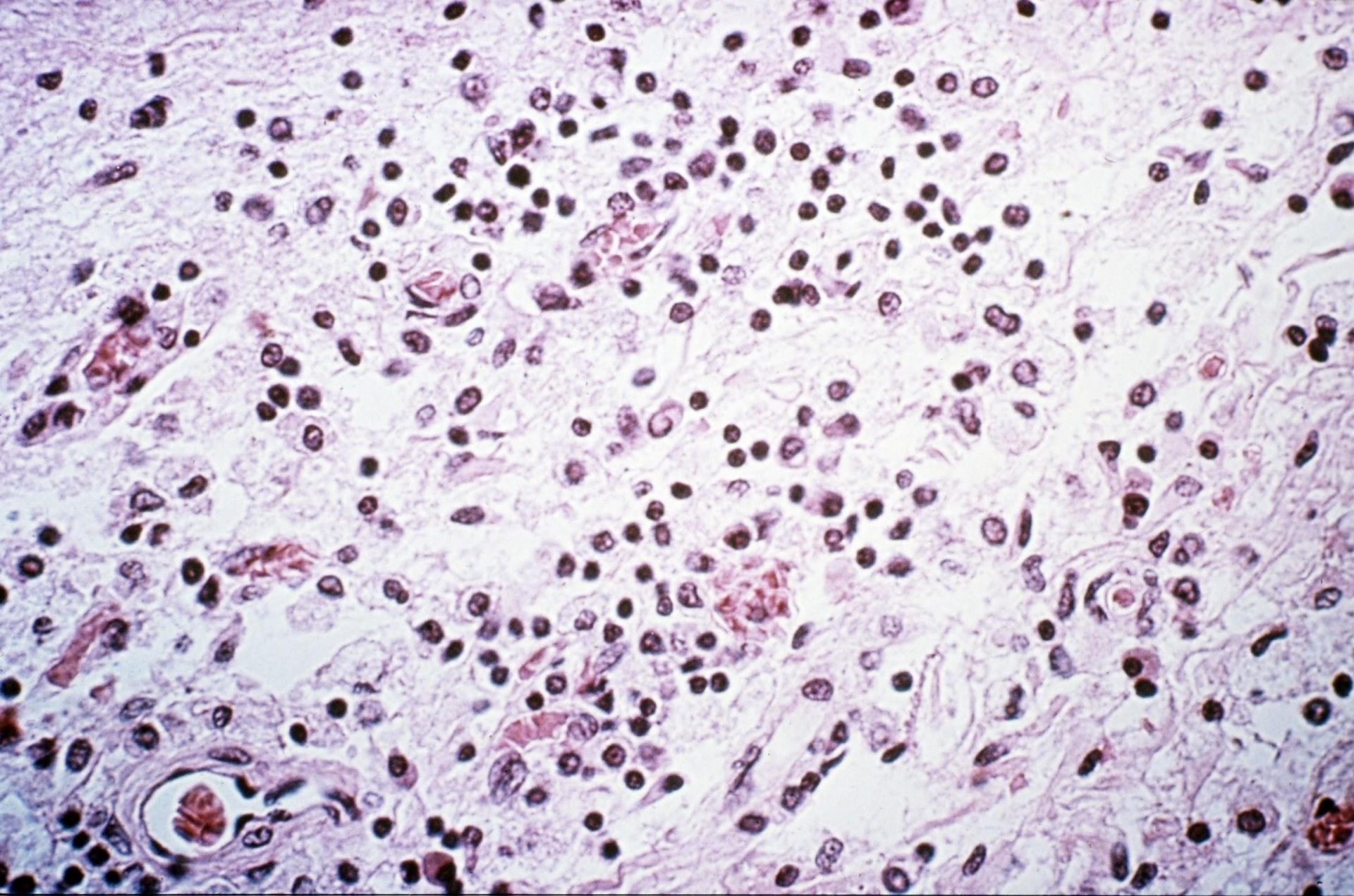


Evaluation on Initial Admission to the Hospital

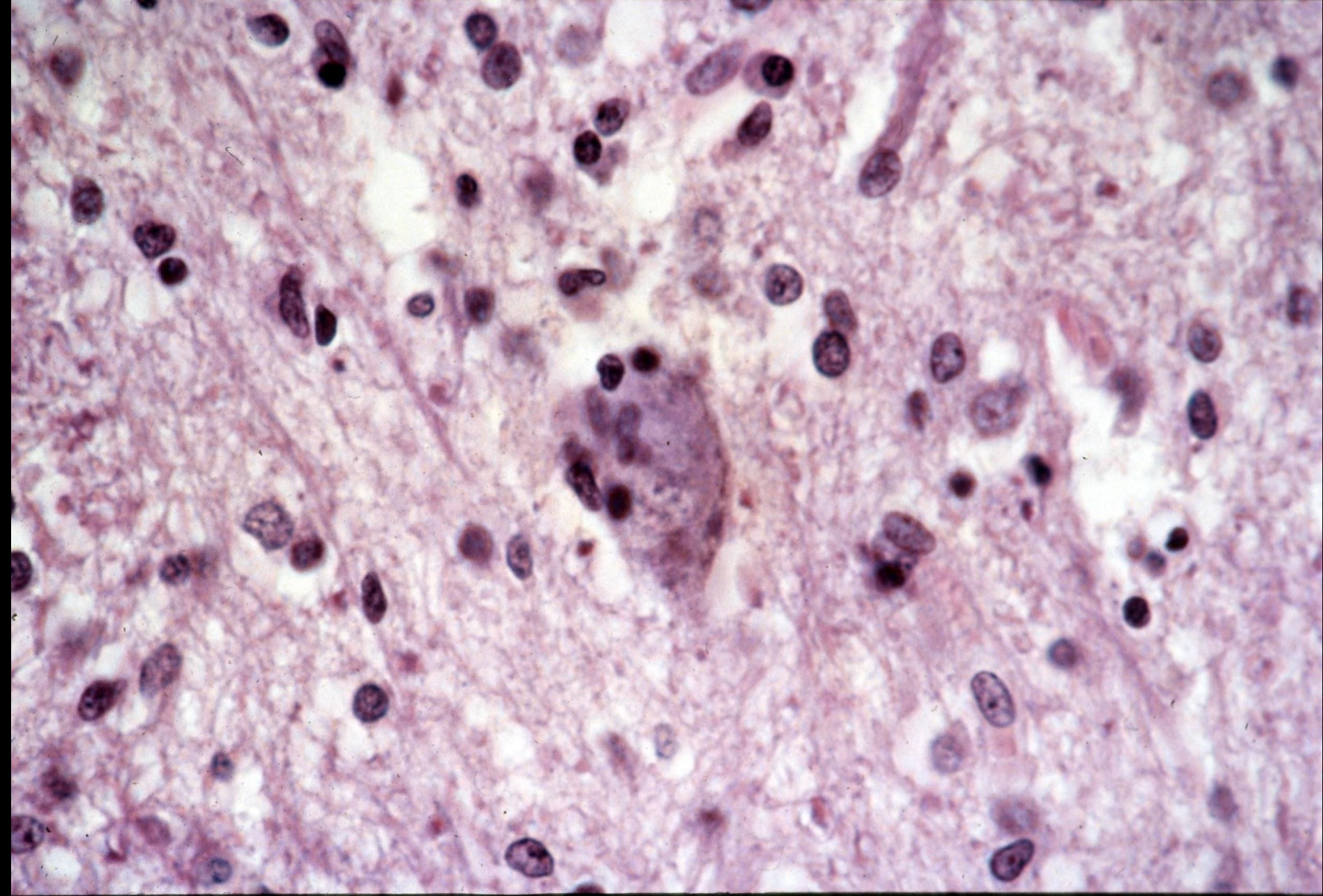
- Poliovirus was isolated from a stool specimen.
- EMG of the right upper limb showed signs of a LMN lesion (fibrillations, positive sharp waves, and fasciculations).



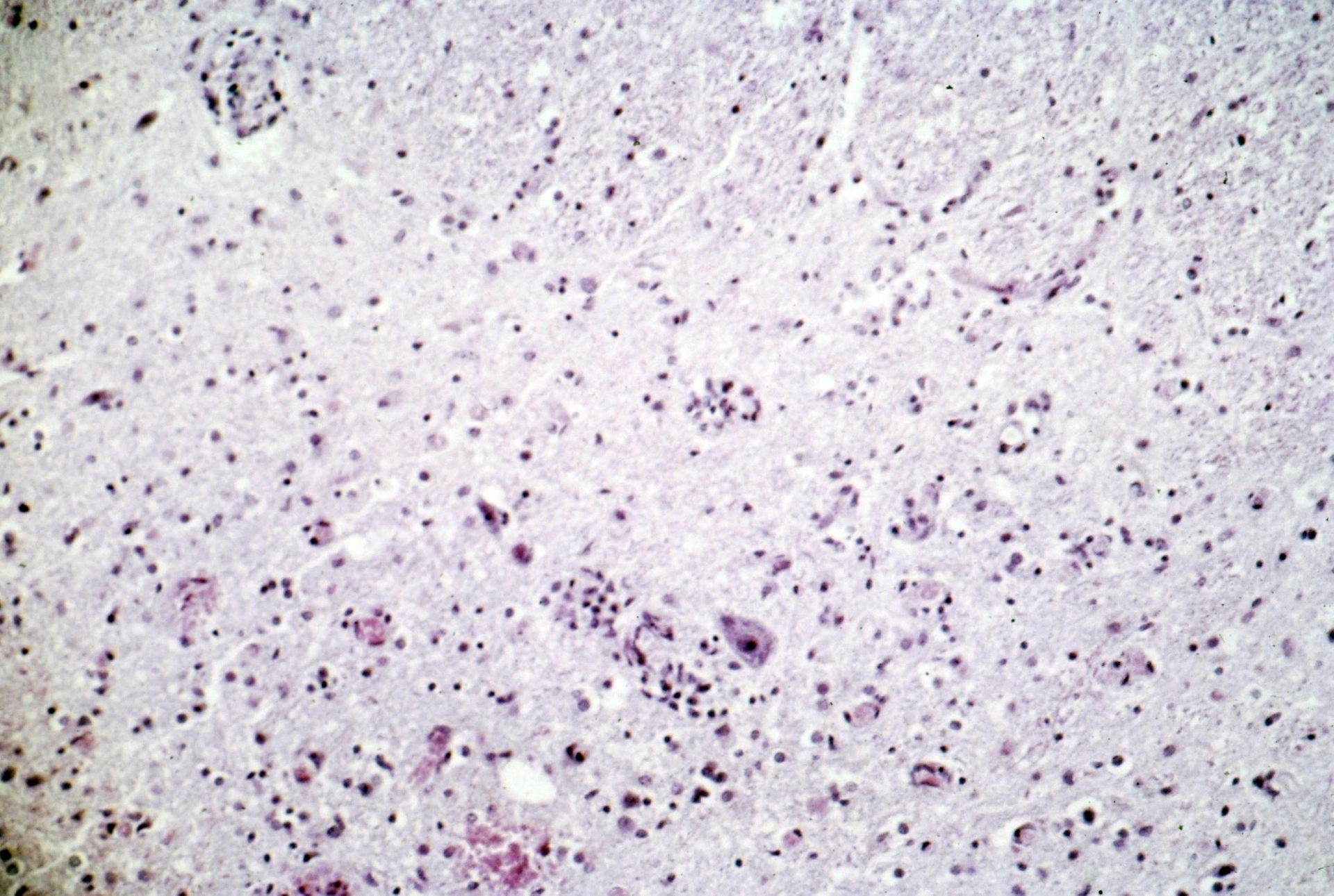
Poliomyelitis:
Anterior Horn and Spinal Cord Swelling



Poliomyelitis:
Acute Necrosis of the Anterior Horn



Poliomyelitis:
Neuronophagia of an Anterior Horn Cell



Poliomyelitis:
Microglial Reaction in the Anterior Horn

H & E