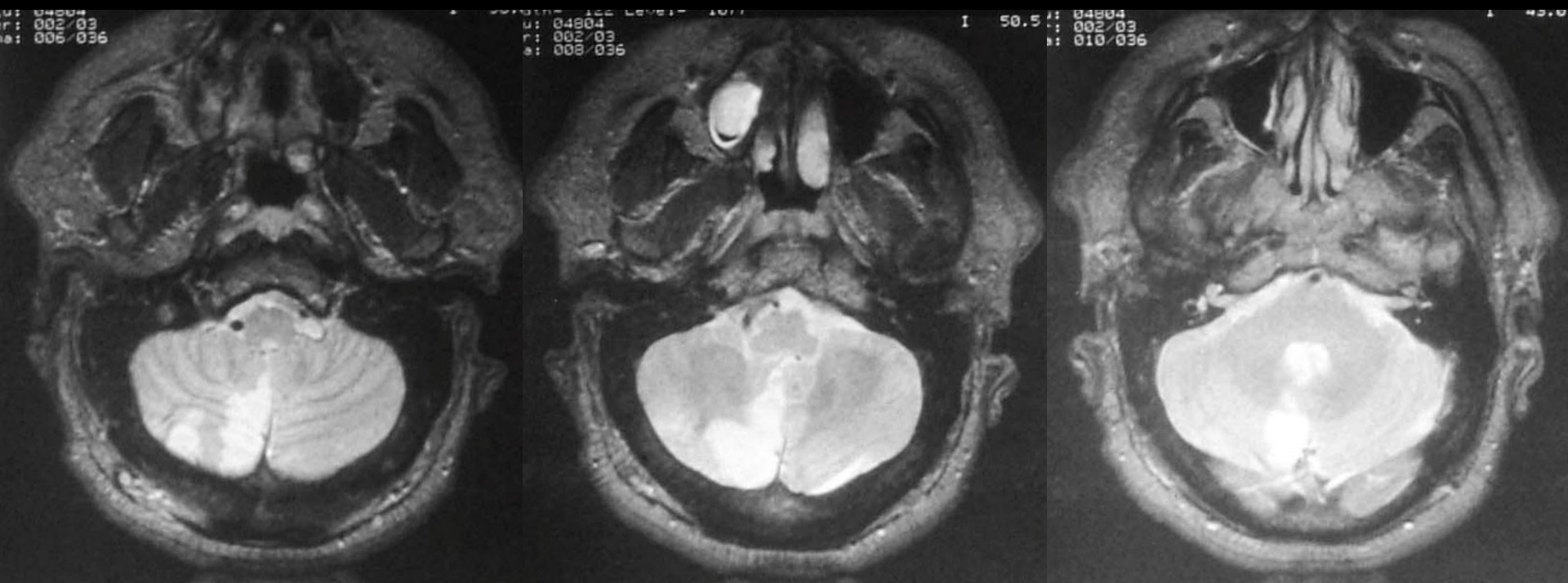


Horizontal CT Scan without Contrast



Horizontal T2W MRI Scan

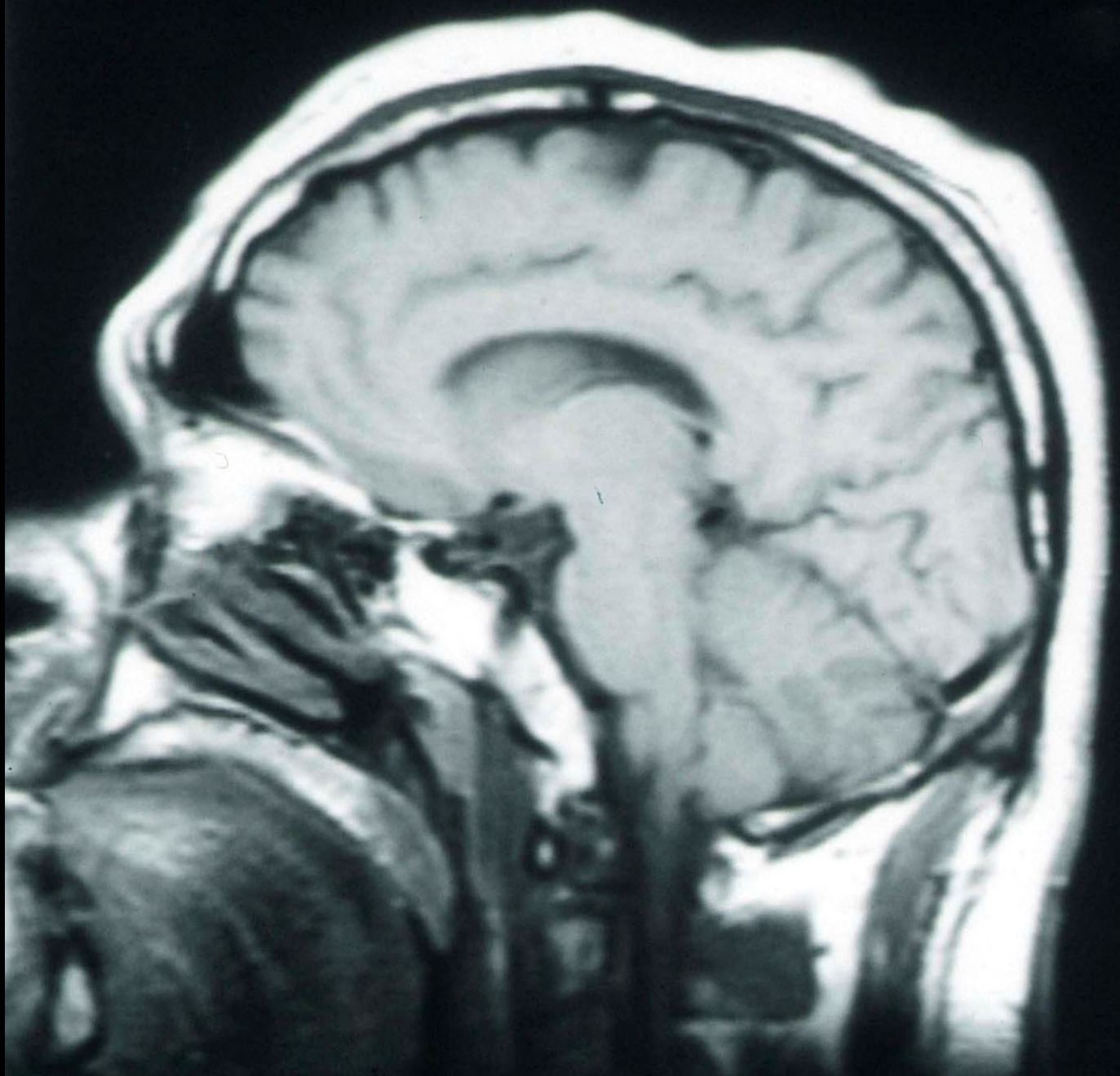
u: 04804
r: 002/03
a: 008/036

I 50.5



Horizontal T2W MRI Scan

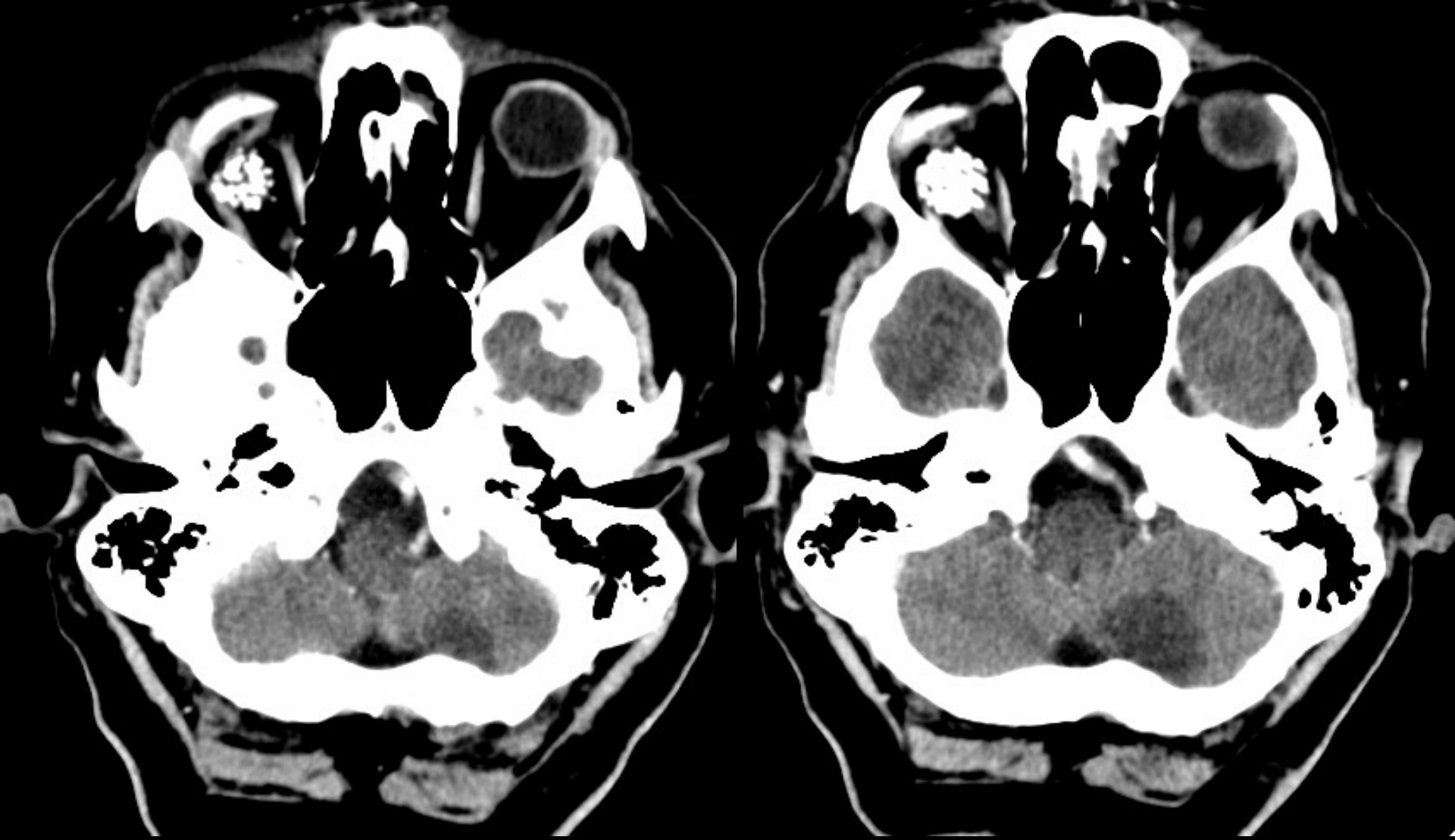
8/16/88



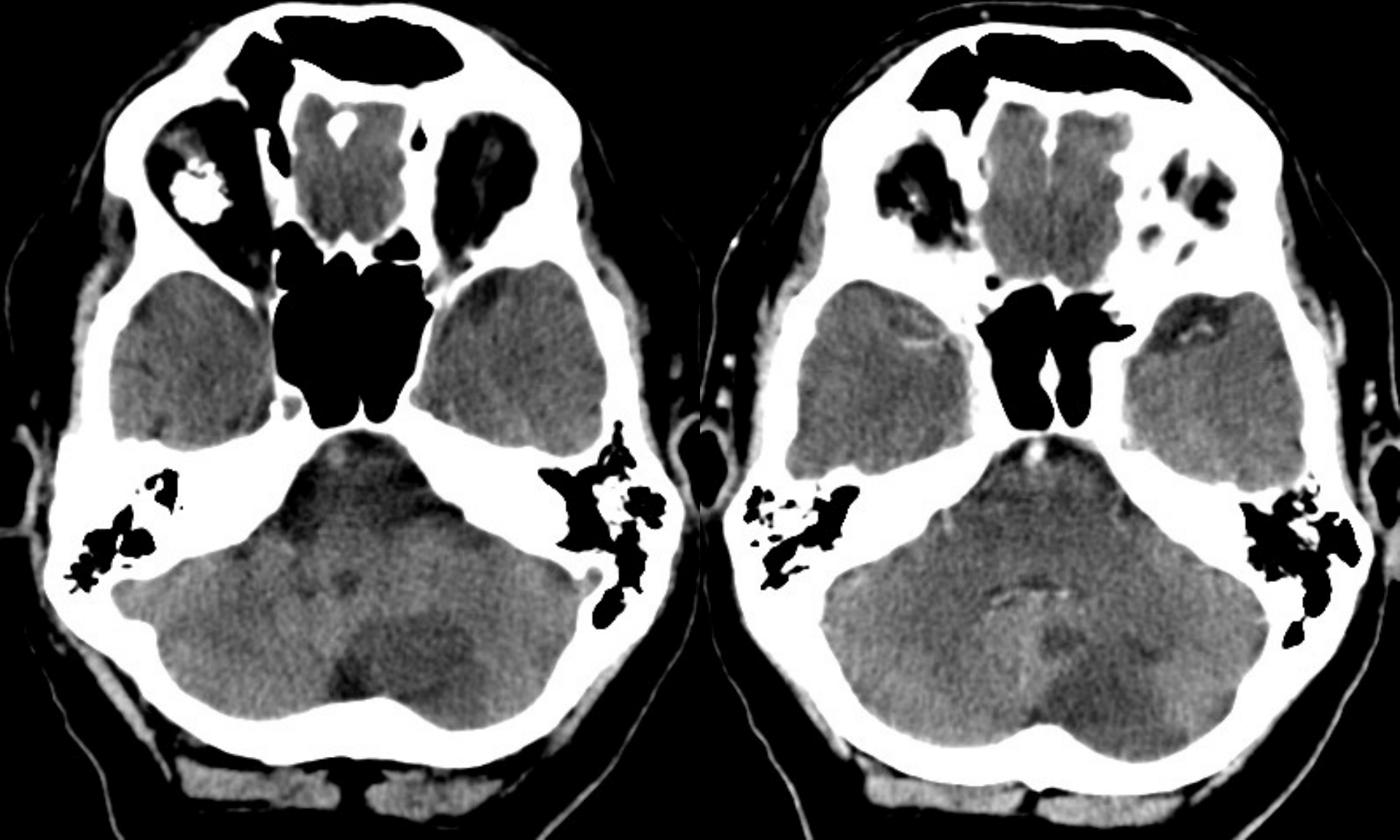
Sagittal T1W MRI Scan

8/16/88

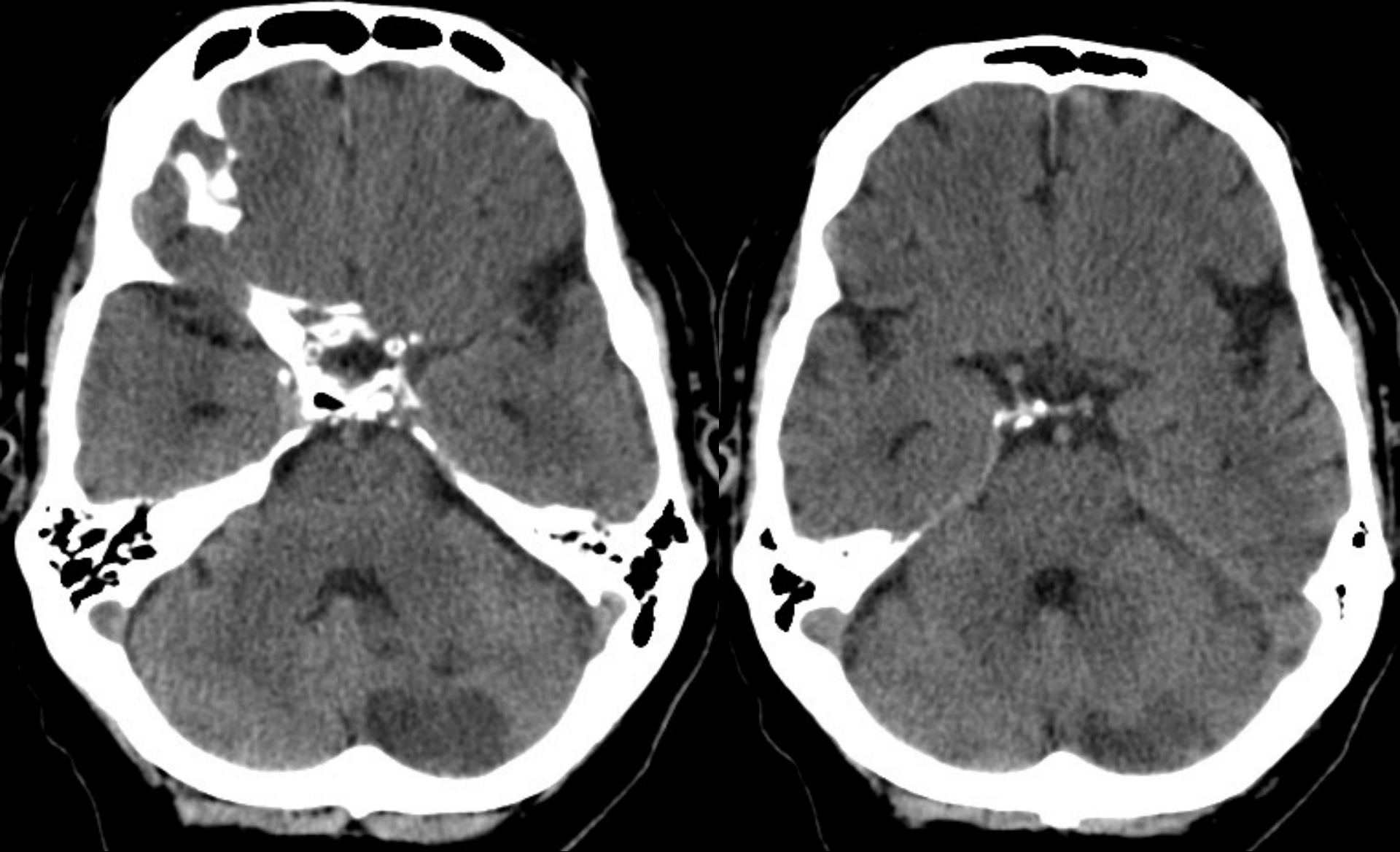
**Another Example of a PICA
Infarct of the Cerebellum:
This Infarct is on the Left Side**



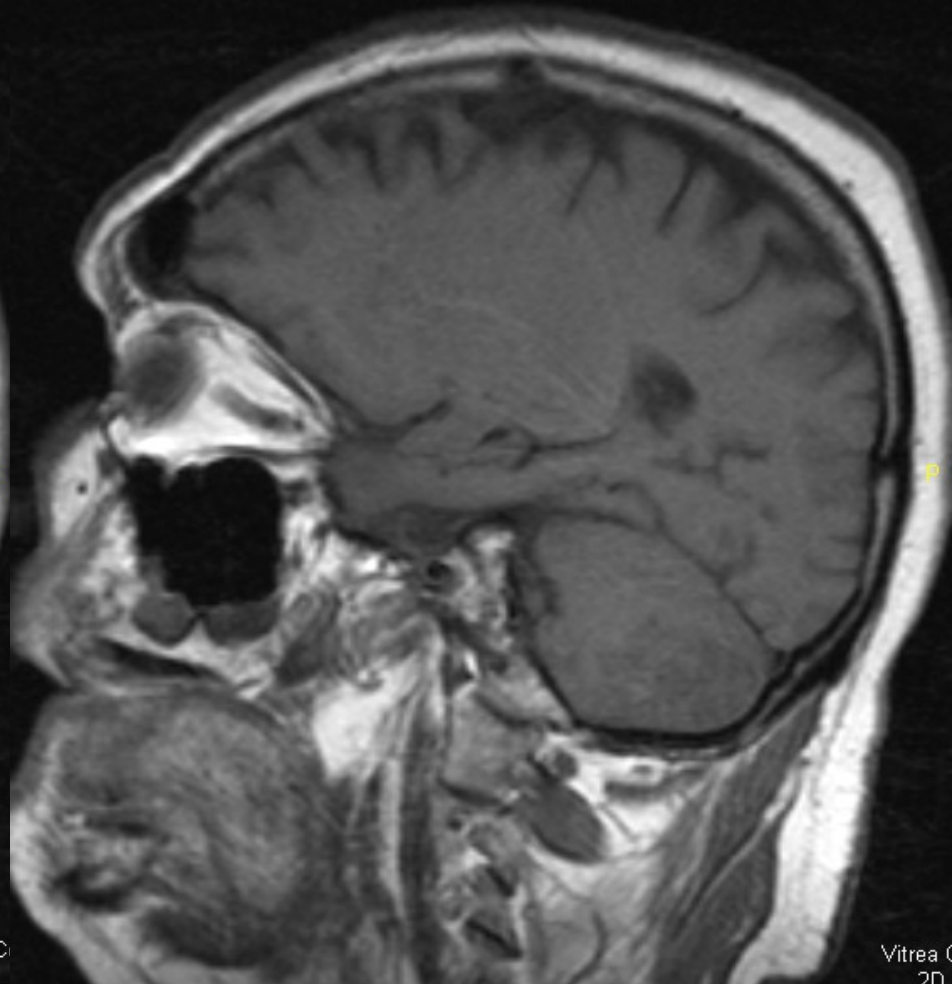
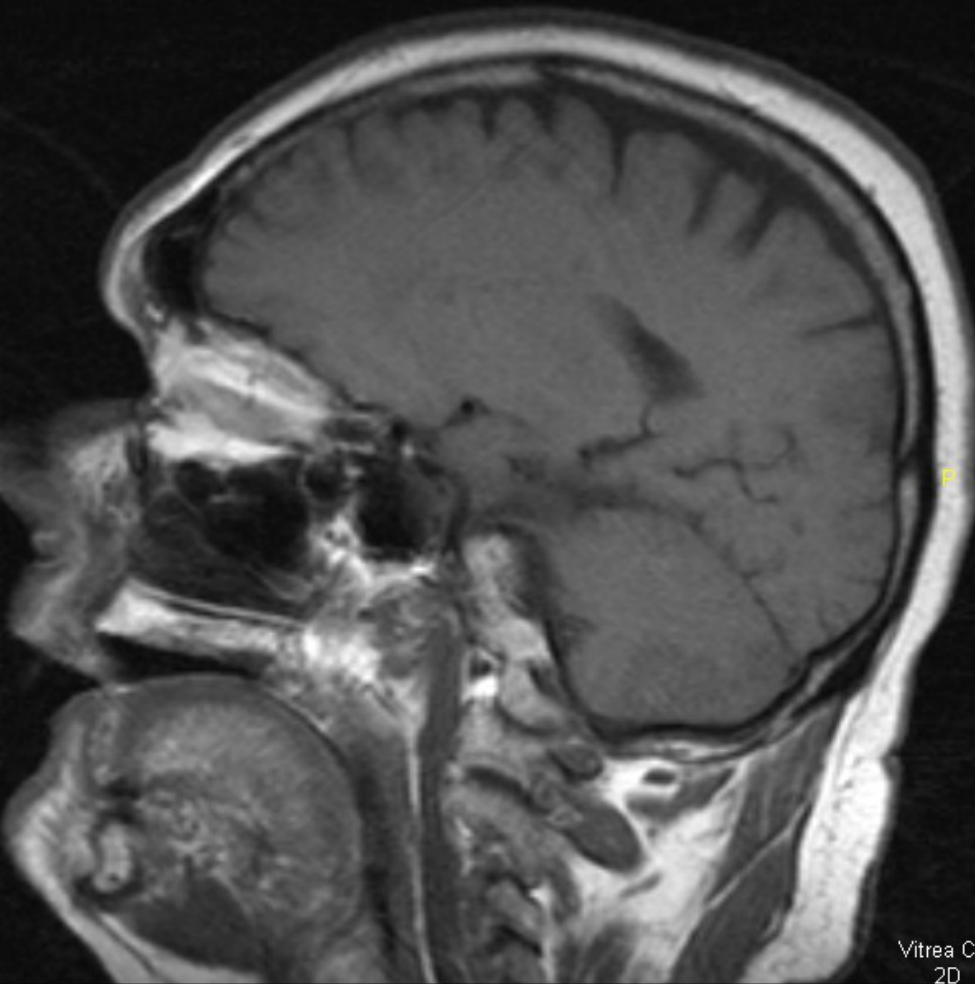
Horizontal CT Scan



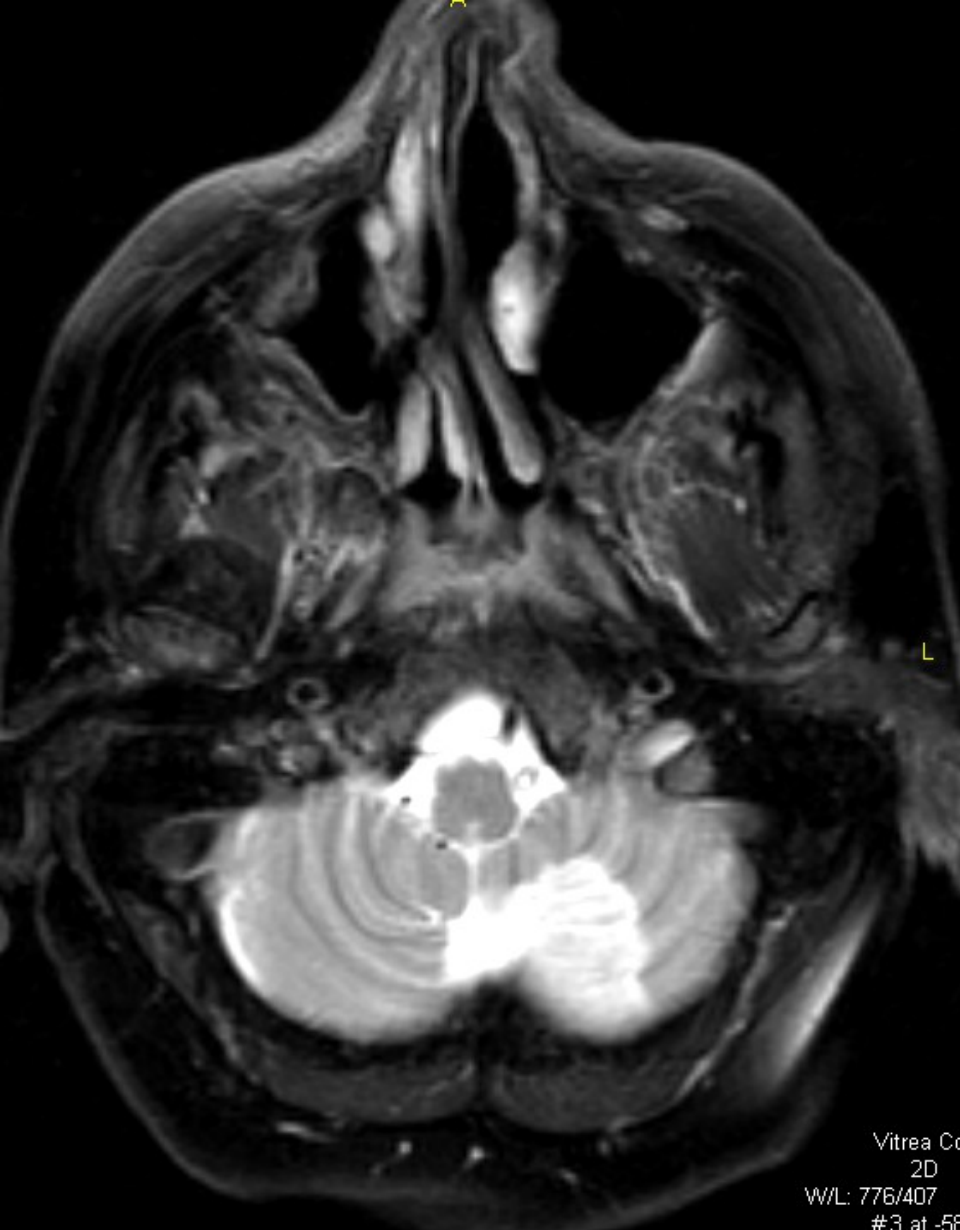
Horizontal CT Scan



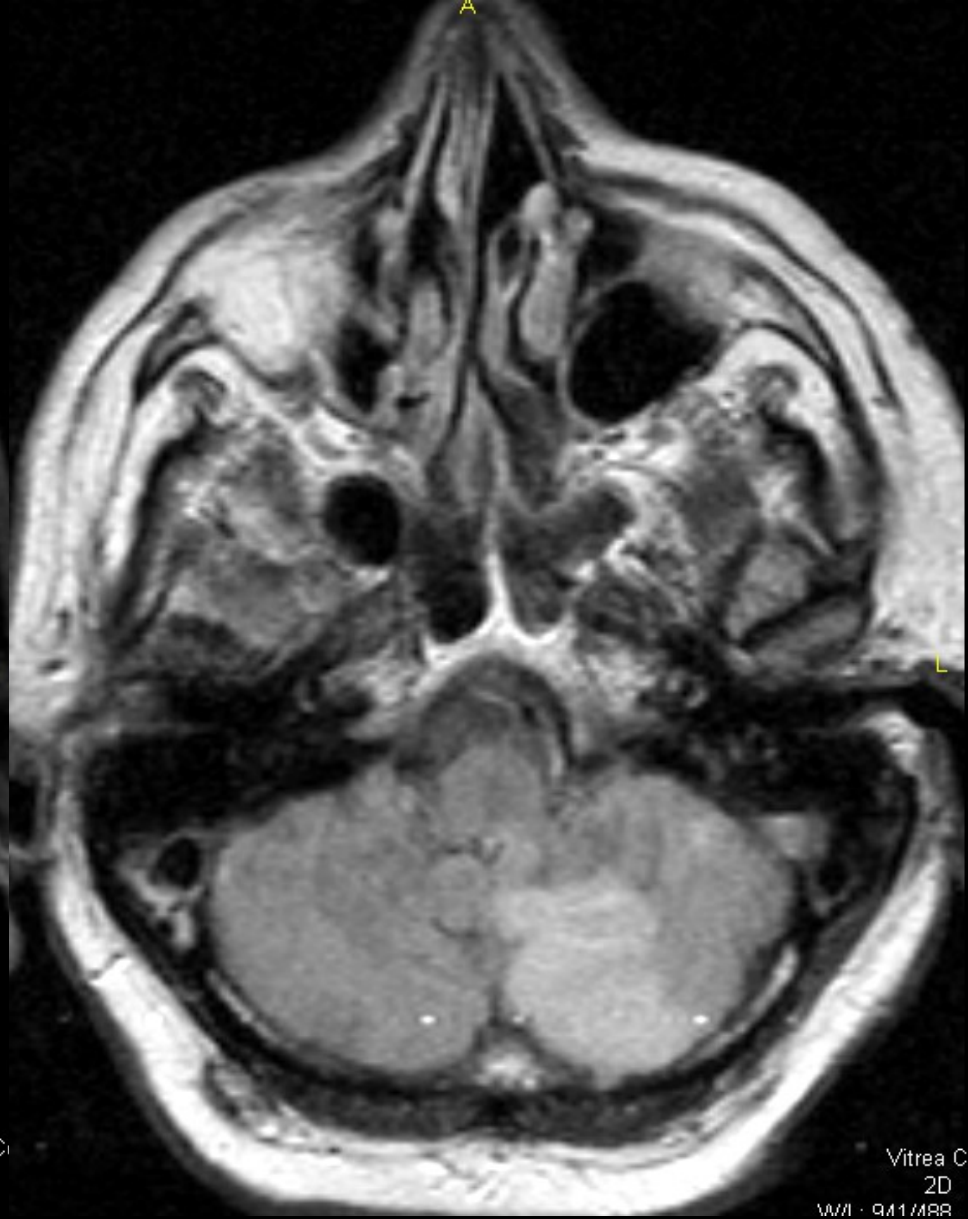
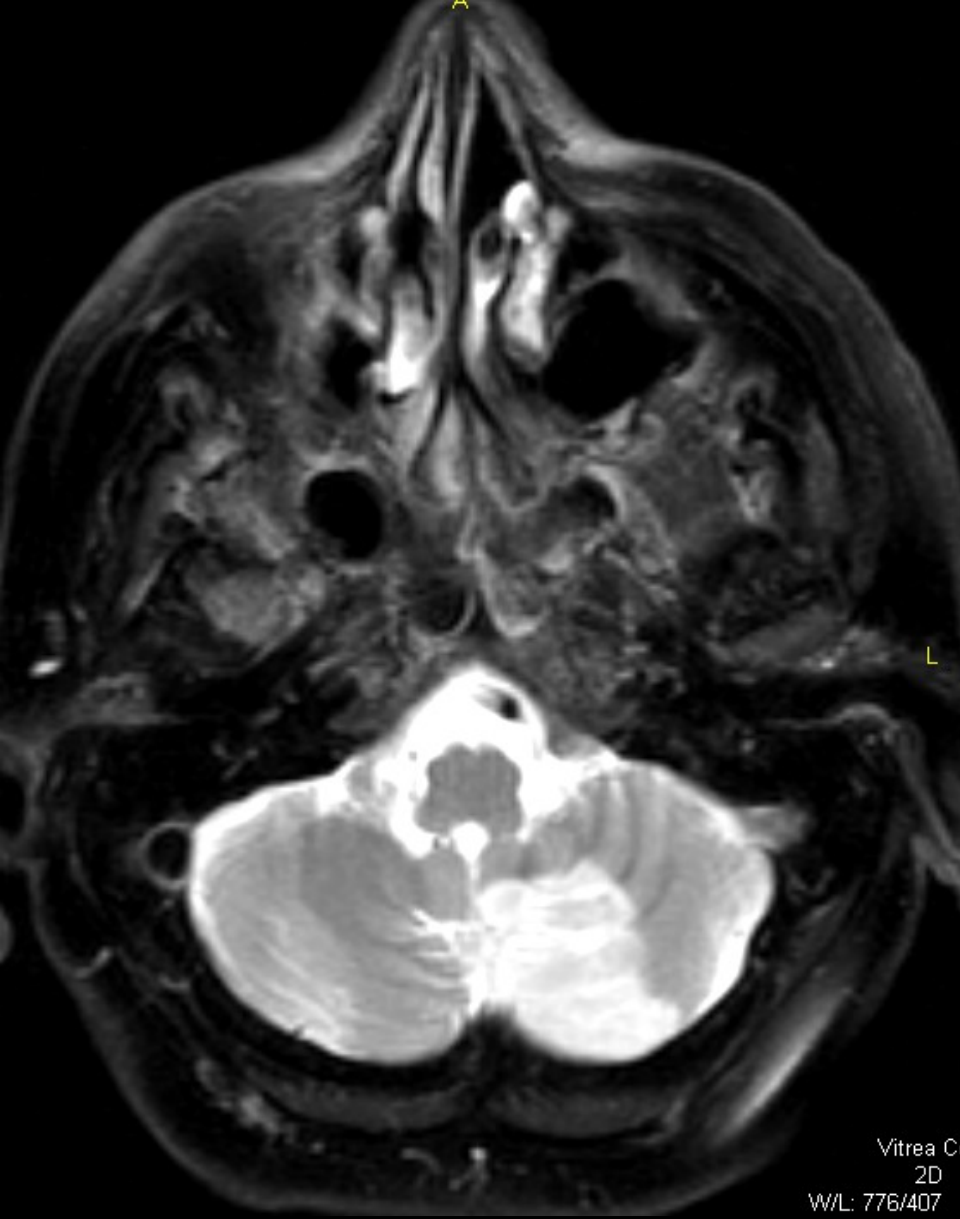
Horizontal CT Scan



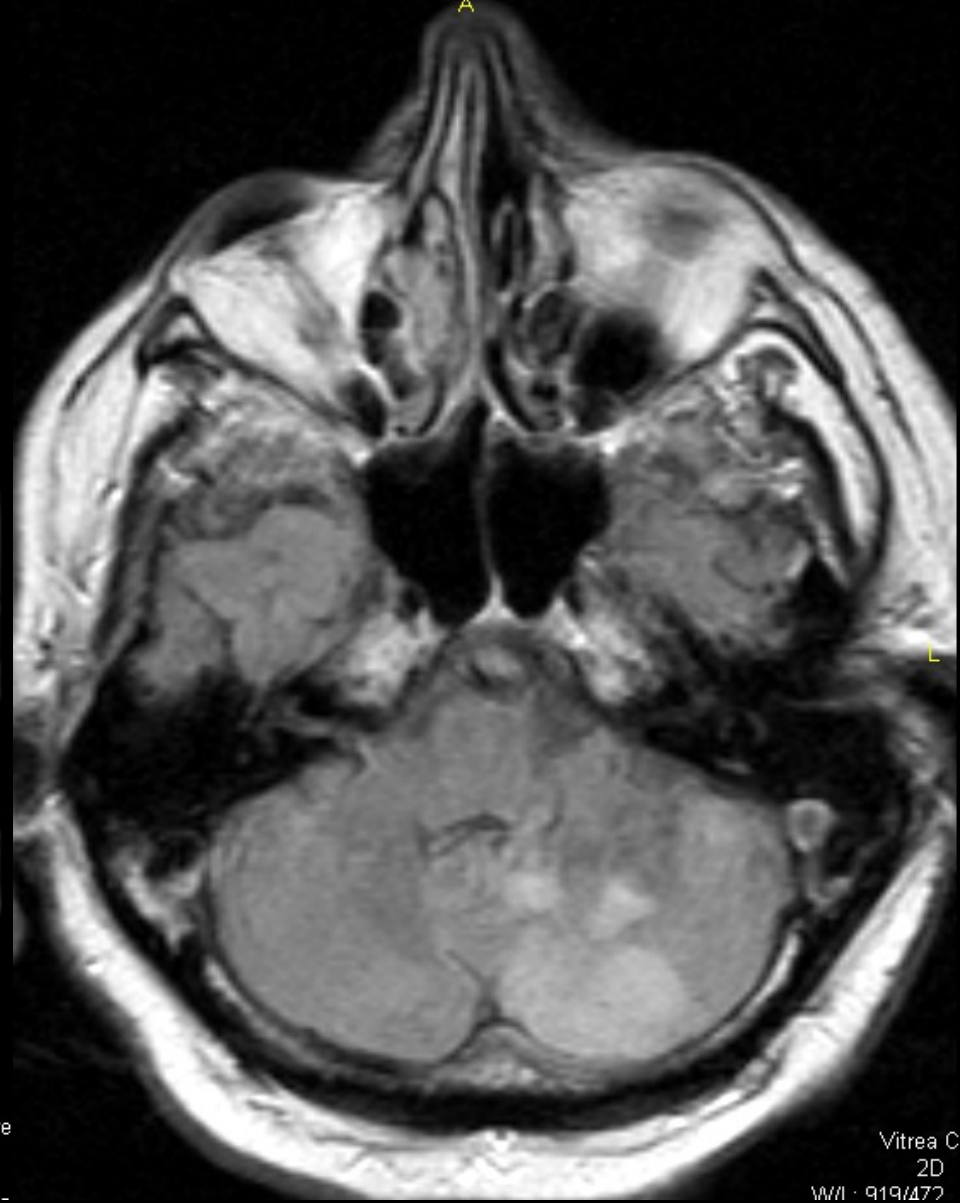
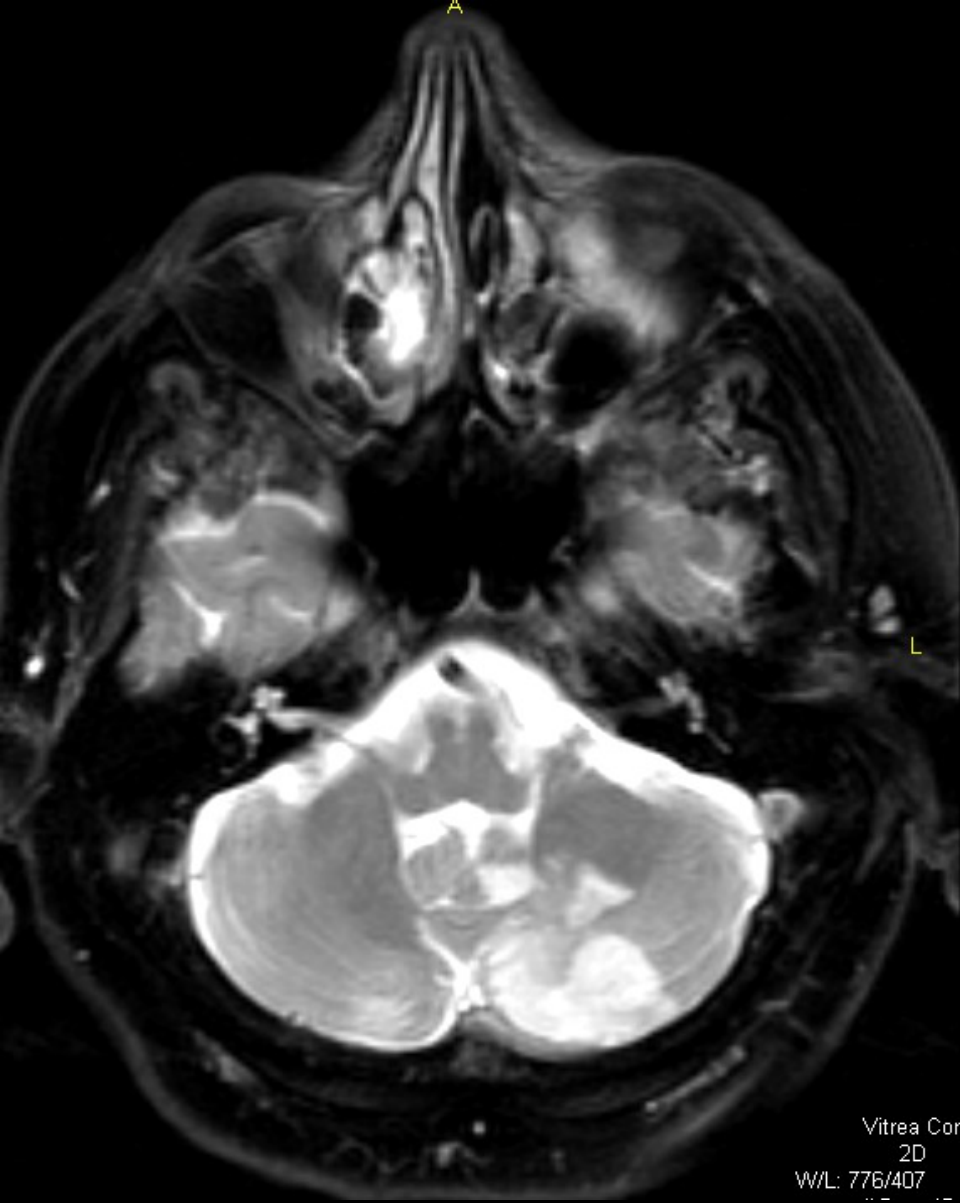
Sagittal T1W MRI Scan without Gd



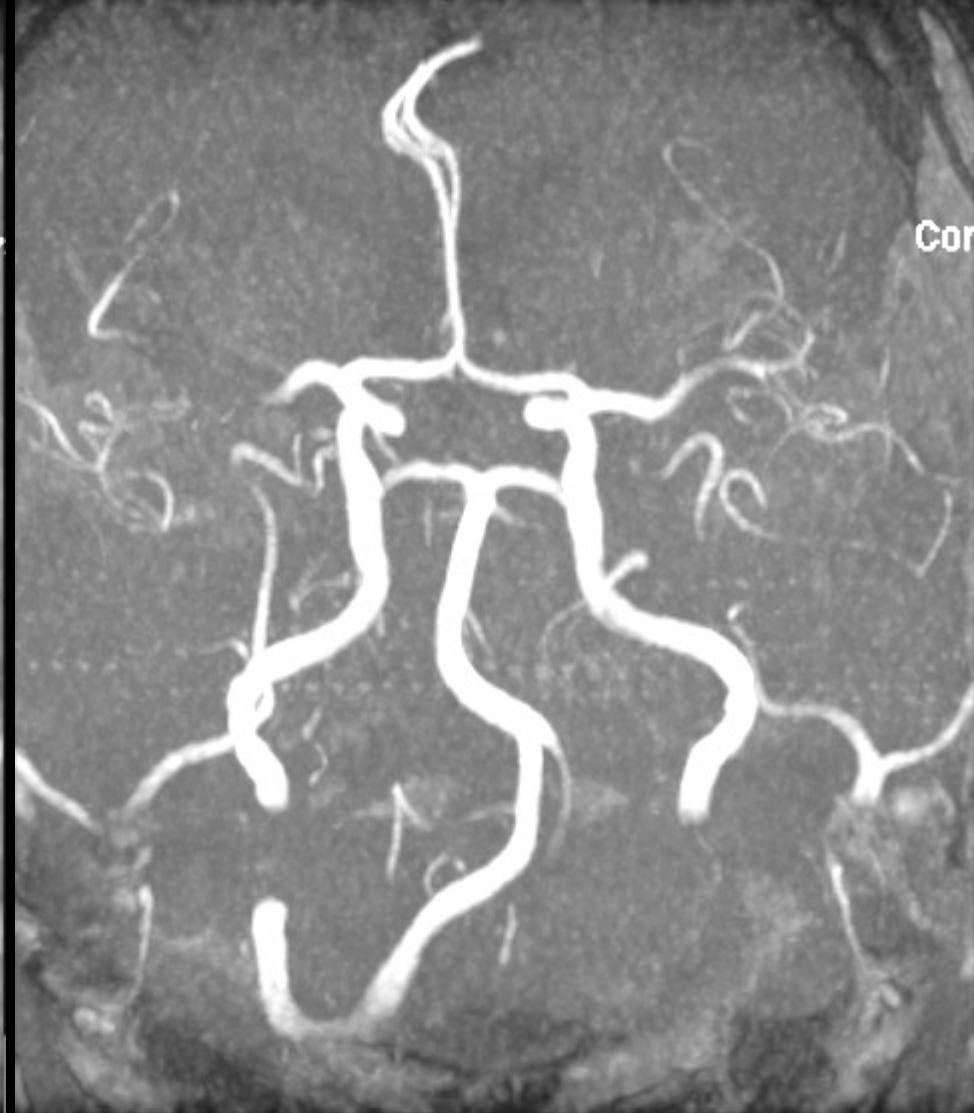
Horizontal T2W (left) and FLAIR (right) MRI Scan



Horizontal T2W (left) and FLAIR (right) MRI Scan



Horizontal T2W (left) and FLAIR (right) MRI Scan



MR Angiogram
(Posterior-Anterior View)