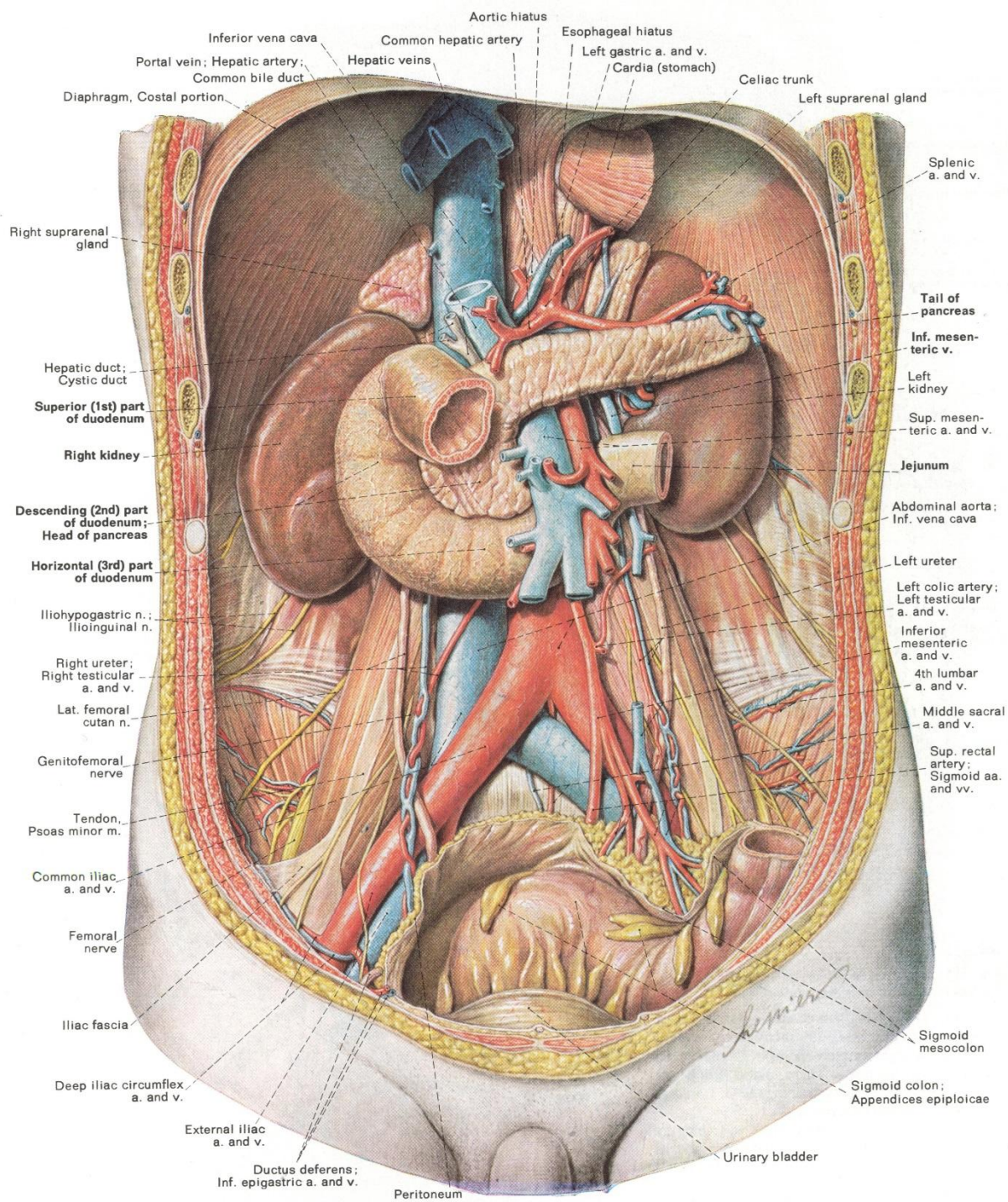


Horizontal Abdominal CT Scan



Horizontal Pelvic CT Scan



Inferior vena cava
 Common hepatic artery
 Esophageal hiatus
 Portal vein; Hepatic artery;
 Common bile duct
 Hepatic veins
 Left gastric a. and v.
 Cardia (stomach)
 Celiac trunk
 Left suprarenal gland

Diaphragm, Costal portion.
 Right suprarenal gland

Splenic a. and v.

Hepatic duct;
 Cystic duct

Tail of pancreas

Superior (1st) part of duodenum

Inf. mesenteric v.

Right kidney

Left kidney

Sup. mesenteric a. and v.

Descending (2nd) part of duodenum;
 Head of pancreas

Jejunum

Horizontal (3rd) part of duodenum

Abdominal aorta;
 Inf. vena cava

Iliohypogastric n.;
 Ilioinguinal n.

Left ureter

Right ureter;
 Right testicular a. and v.

Left colic artery;
 Left testicular a. and v.

Lat. femoral cutan. n.

Inferior mesenteric a. and v.

Genitofemoral nerve

4th lumbar a. and v.

Tendon, Psoas minor m.

Middle sacral a. and v.

Common iliac a. and v.

Sup. rectal artery;
 Sigmoid aa. and vv.

Femoral nerve

Iliac fascia

Sigmoid mesocolon

Deep iliac circumflex a. and v.

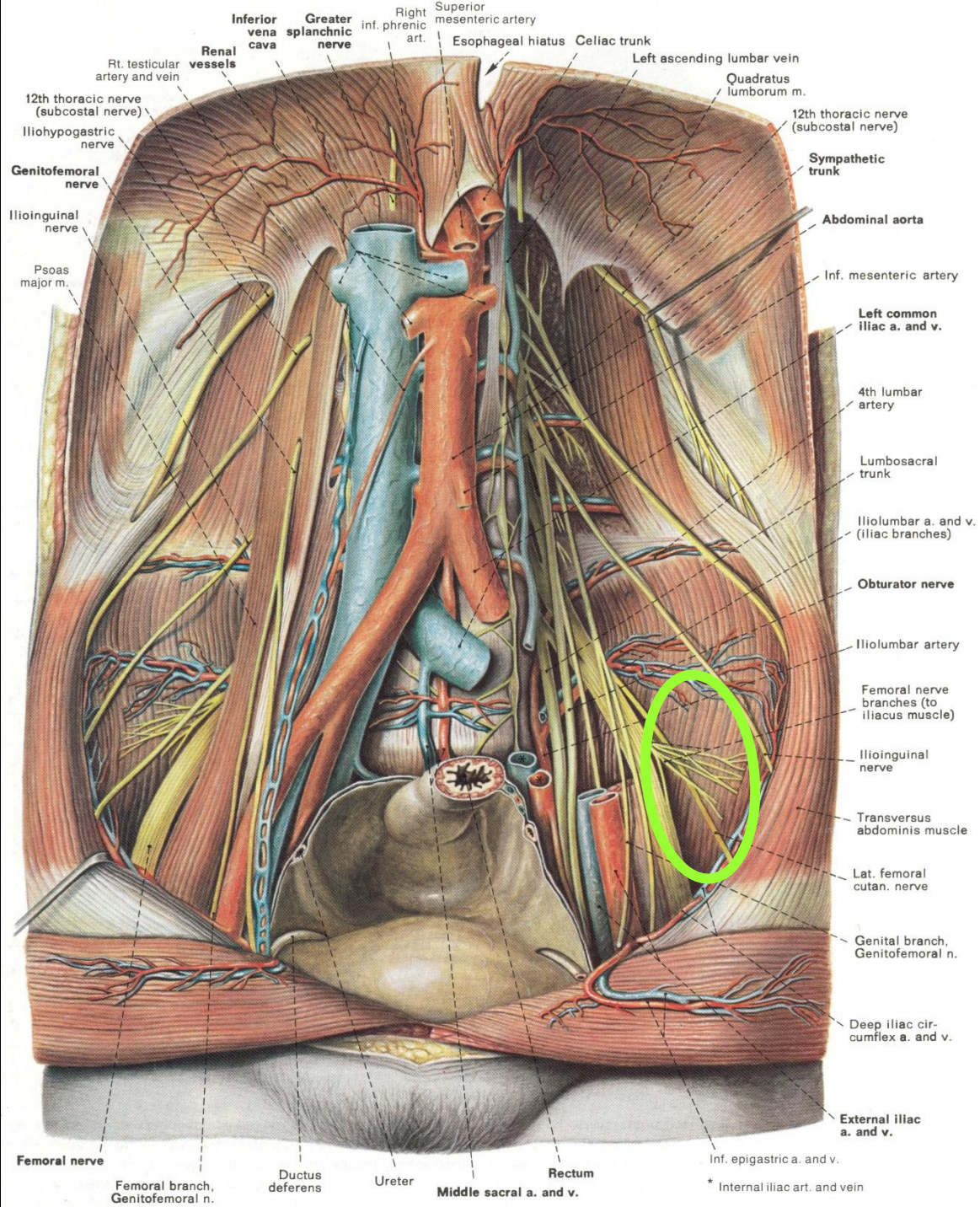
Sigmoid colon;
 Appendices epiploicae

External iliac a. and v.

Urinary bladder

Ductus deferens;
 Inf. epigastric a. and v.

Peritoneum



- Rt. testicular artery and vein
- 12th thoracic nerve (subcostal nerve)
- Iliohypogastric nerve
- Genitofemoral nerve
- Ilioinguinal nerve
- Psoas major m.
- Renal vessels
- Inferior vena cava
- Greater splanchnic nerve
- Right inf. phrenic art.
- Superior mesenteric artery
- Esophageal hiatus
- Celliac trunk
- Left ascending lumbar vein
- Quadratus lumborum m.
- 12th thoracic nerve (subcostal nerve)
- Sympathetic trunk
- Abdominal aorta
- Inf. mesenteric artery
- Left common iliac a. and v.
- 4th lumbar artery
- Lumbosacral trunk
- Iliolumbar a. and v. (iliac branches)
- Obturator nerve
- Iliolumbar artery
- Femoral nerve branches (to iliacus muscle)
- Ilioinguinal nerve
- Transversus abdominis muscle
- Lat. femoral cutan. nerve
- Genital branch, Genitofemoral n.
- Deep iliac circumflex a. and v.
- External iliac a. and v.
- Inf. epigastric a. and v.
- * Internal iliac art. and vein
- Middle sacral a. and v.
- Rectum
- Ureter
- Ductus deferens
- Femoral nerve
- Femoral branch, Genitofemoral n.

