



# MOVEMENT DATA

SWIPE

*How Drowning Prevention  
Auckland is implementing  
effective interventions to save  
lives.*

Rock-based fishing continues to be one of New Zealand's most dangerous pastimes.

---

## **5 fishers lost their lives**

off Auckland's West Coast in 2005, initiating the implementation of the West Coast Rock-based Fishing Project.

Additionally, rivers continue to be one of the riskiest environments for drowning in New Zealand.

---

From 2016-2020

**more than 25%**

of all preventable drowning occurred in rivers (WSNZ, 2021).

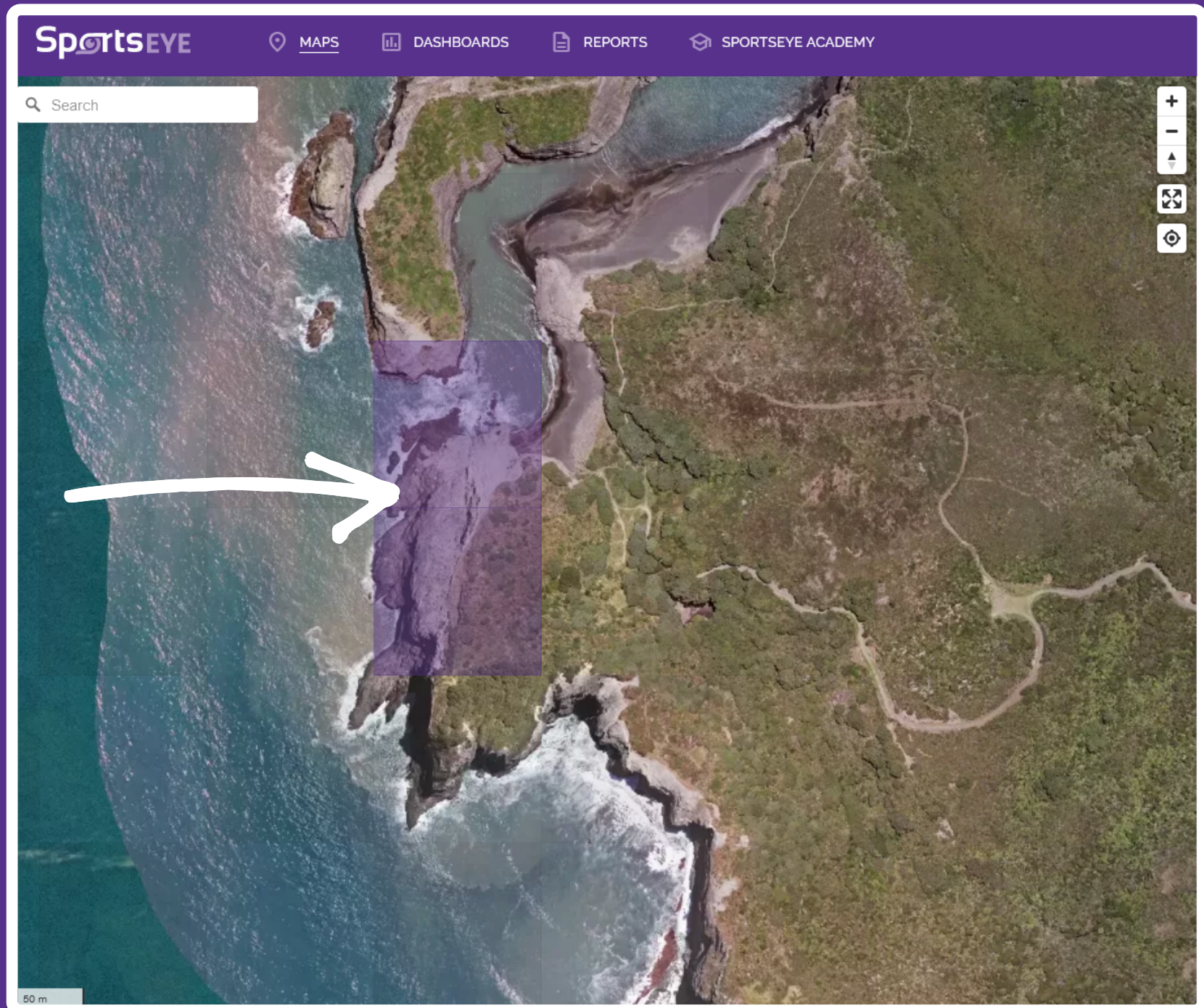
Drowning Prevention Auckland is using our Movement Data Module to ensure they can continue to provide **targeted education** across a number of months & time periods for the most dangerous fishing spots, and most popular swimming locations.

---

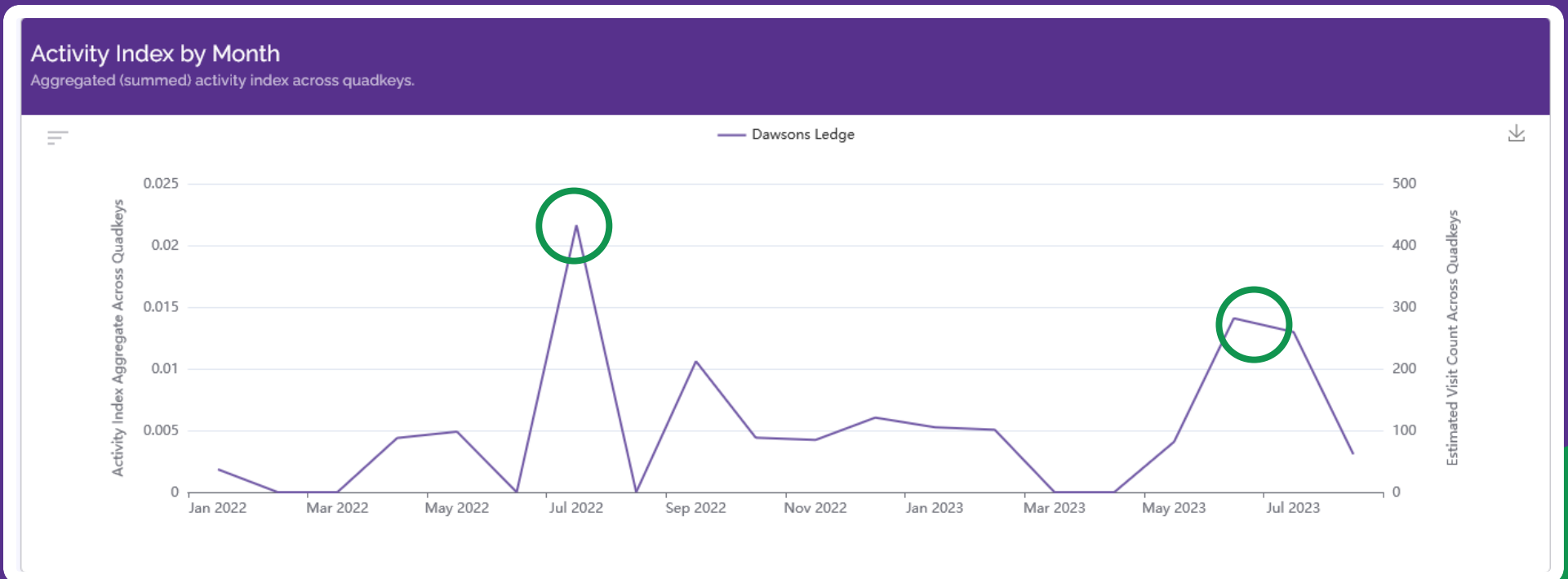
# What has Drowning Prevention Auckland learned using the Movement Data Module?

# Dawson's Ledge

Rock-based fishing



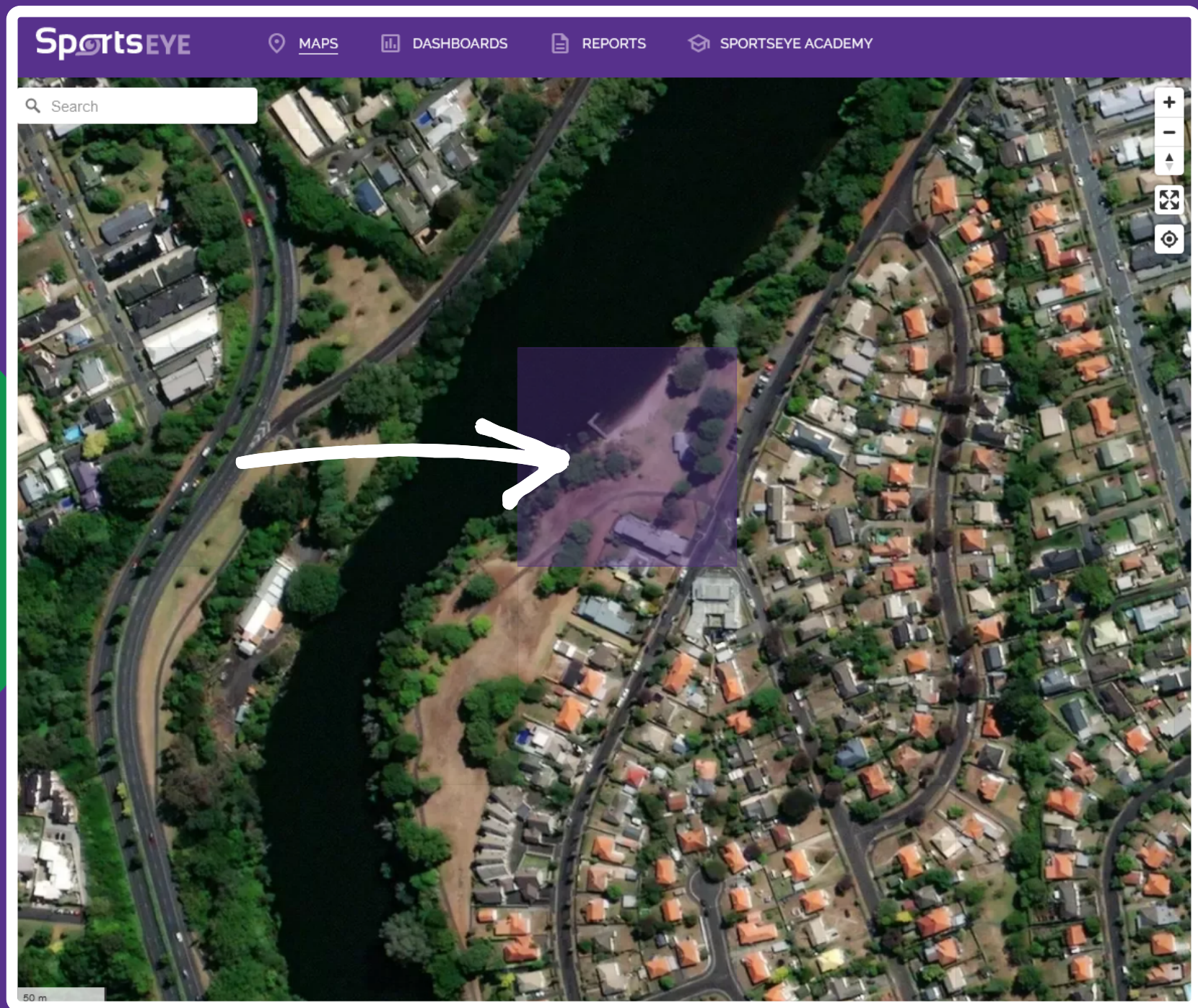
## Monthly peaks in July & August



## Hourly peaks at 10am, 1pm and 5pm



# Wellington Street Beach

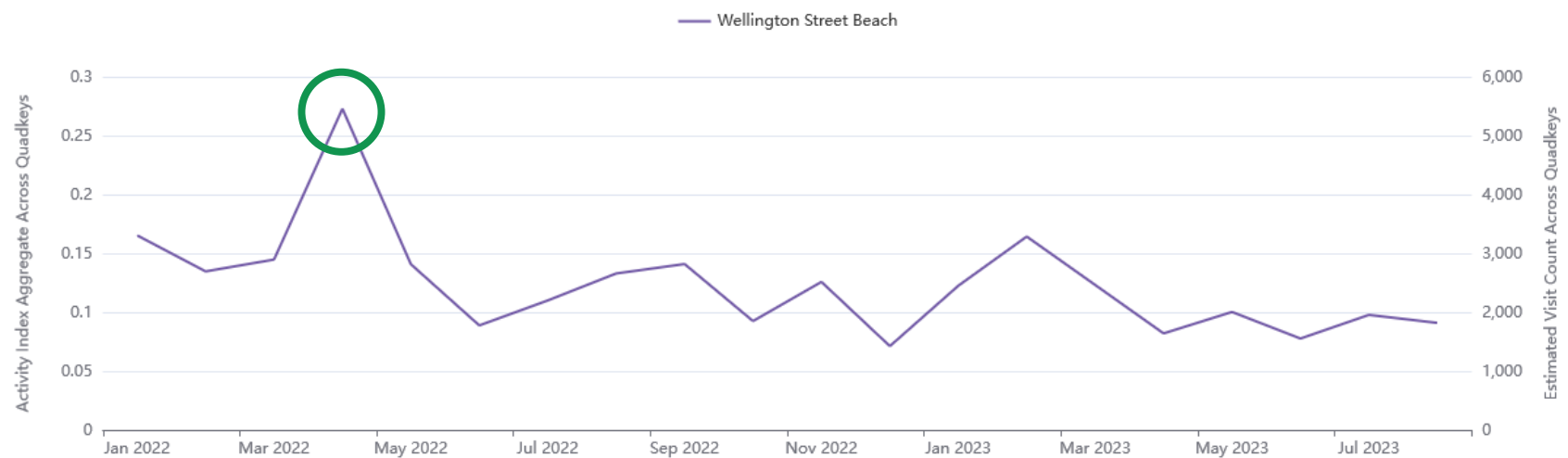




This data was used to cross reference Drowning Prevention Auckland's observational and behavioural study numbers and was used to identify the need for a public rescue equipment trial.

### Activity Index by Month

Aggregated (summed) activity index across quadkeys.

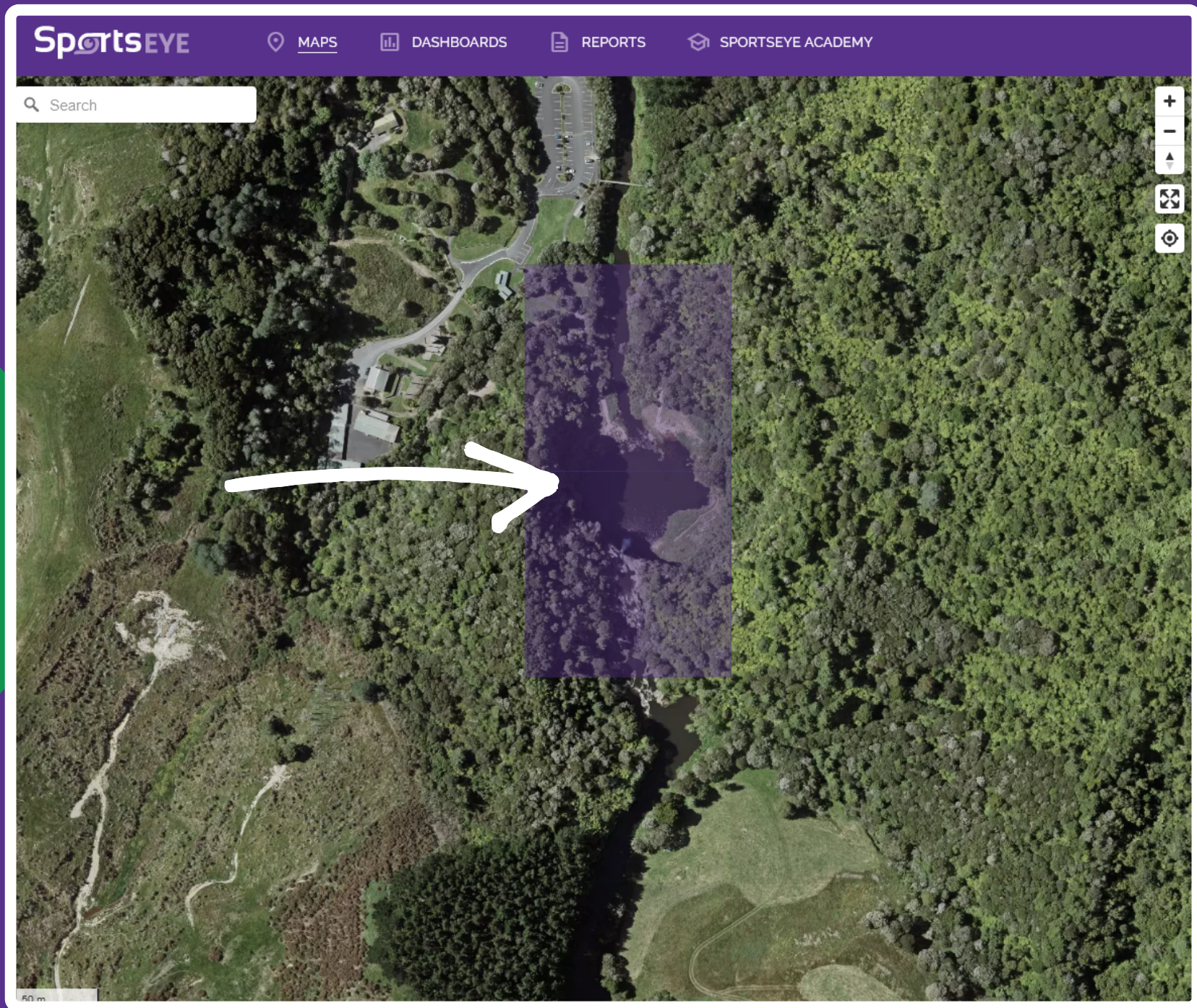


### Activity Index by Hour of Day

Aggregated (summed) activity index across quadkeys by time of day.



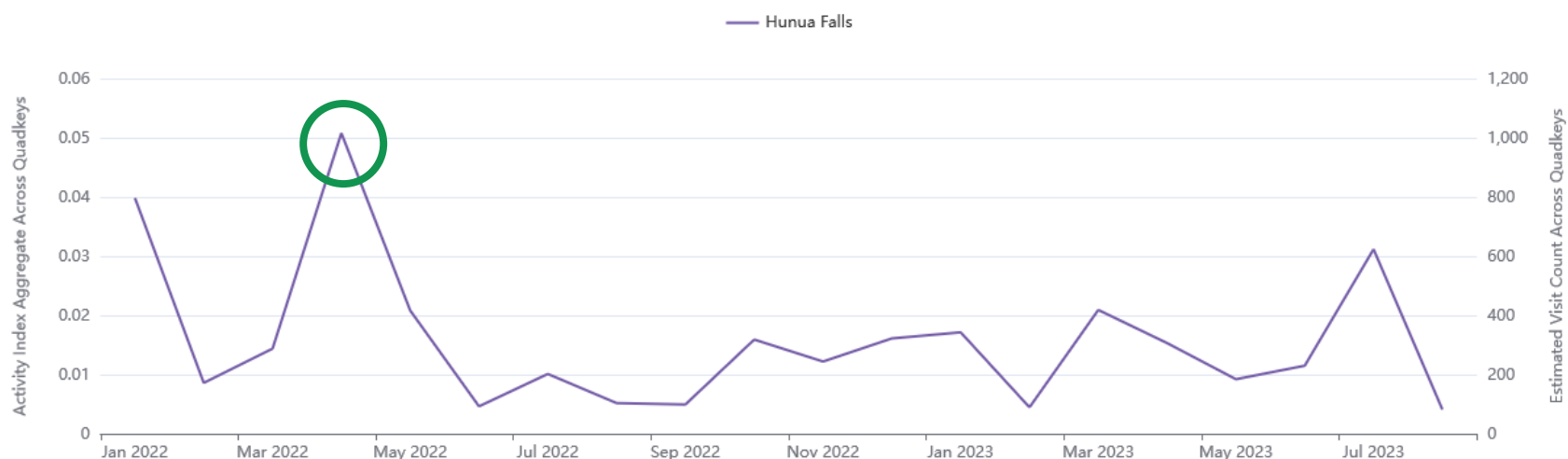
# Hunua Falls



This data was used to validate user numbers and times for visitation. It can be used to identify what times we need to **provide targeted information, education and advocacy** for visitors to the site

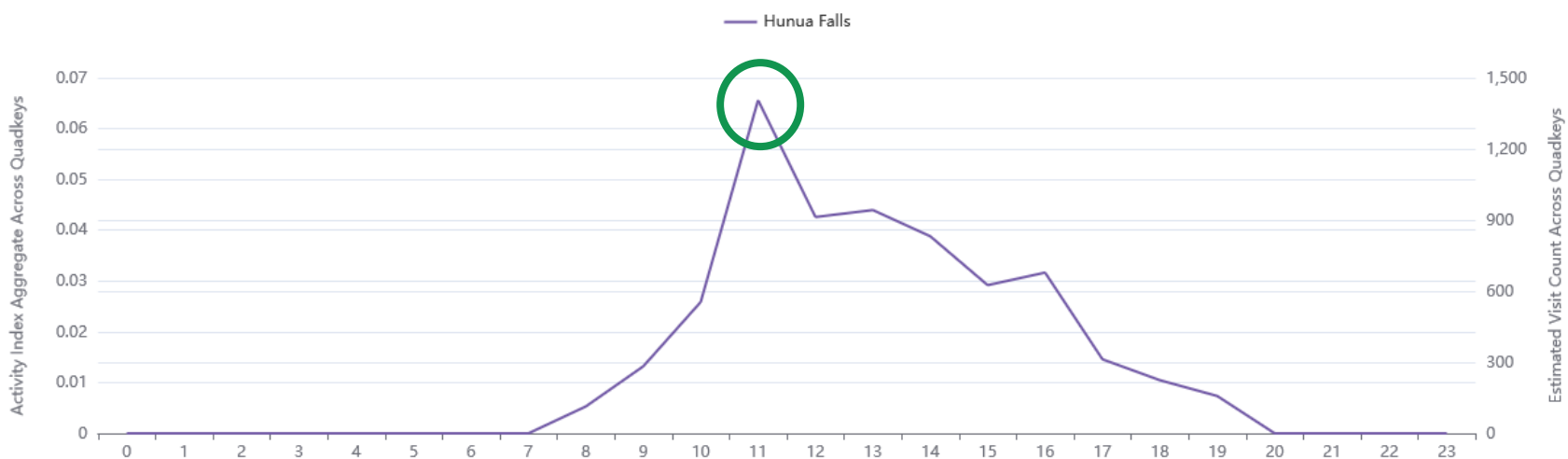
### Activity Index by Month

Aggregated (summed) activity index across quadkeys.



### Activity Index by Hour of Day

Aggregated (summed) activity index across quadkeys by time of day.



“

*This data validates our recommendations in terms of public rescue equipment, signage and infrastructure recommendations.*

*We can use this data to implement effective interventions of education and advocacy over targeted times of high visitation at the site as opposed to guessing.*

---

**JOSH CARMINE**

Aquatic Research Educator



# GET IN TOUCH

[intelligence@activexchange.org](mailto:intelligence@activexchange.org)

[www.activexchange.org](http://www.activexchange.org)