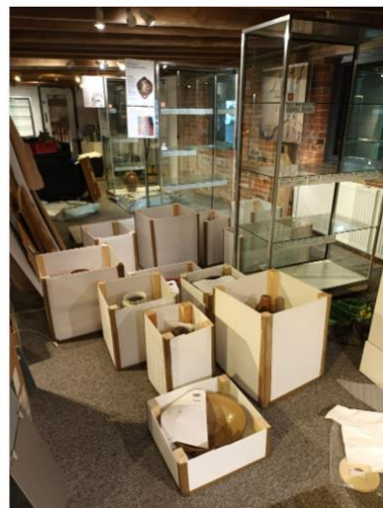


Welcome to your June e-newsletter. Apologies for being a little quieter than usual over the last few weeks as I have been involved with the extensive decanting work taking place at Poole Museum.

Felicity (Chair) would like to let you know that PMF's fundraising applications have exceeded expectations and we will share this news with you soon and that we are arranging a programme of events/talks for the months ahead and this will be communicated to all our members shortly.

In the meantime, we send you all, best summer wishes -
Jenny (Membership Officer)

Emptying the Museum



Since Poole Museum has been closed to the public since end of March, a team of staff, volunteers and specialist removal company have been working valiantly to empty the main museum floors ahead of the redevelopment project.

All collection items have been carefully packed, crated, listed and moved to our secure offsite location. The precious Swash Wreck rudder, log-boat and fire engine amongst others have been meticulously moved to their new home for now and the curator team will continue to monitor, clean and protect the museum artefacts.

Poole History Centre library books have been pest checked, listed and boxed to be moved but still be available for public research enquiries that will continue to take place during the building works.

Did you know?

- Museum volunteers have given over 1300 hours of their time in helping decant & pack up the museum
- Over 8000 tissue paper puffs and sausages have been made to pack away around 1200 individual collection objects
- It has taken over 350 large re-usable plastic boxes to empty all the books from the Wool Hall

We are sure you would join PMF Chair & Trustees in thanking everyone that has been involved with this hard work and particularly those members that have become packing volunteers. If you are interested in any volunteer positions, please do contact our Museum Volunteer Manager, Lorenda Elliott.

Augustus John Exhibition Review



Michael Spender hosted a most interesting talk and presentation on 'Another look at Augustus John: Poole's leading Artist' in March at AUB, Bournemouth.

We learnt that John created artworks in many mediums during his time including painting on wood panels as well as canvas, pen ink or chalk sketching, sculpture making and was also an official war artist within the Canadian Army in 1917. Although John travelled across Europe, he also had roots in Poole, living or staying in Alderney and could be spotted in the pubs along Poole Quay later in life!

Thank you Michael for taking the time to give such an fascinating perspective of John's contribution to the art world. **Thank you** to Prof. Paul Gough & AUB for hosting us and to all those that came along to enjoy the event.

Museum on the Move

Thanks to funding from Poole Museum Foundation, an enthusiastic team of staff and volunteers will be taking a vibrant programme of creative, cultural activity out to local community and visitors throughout the season. Pop-up workshops will explore Poole through the ages with unique artefacts to discover and themed crafting for all ages and more can be found out about the three new exciting galleries Harbour Life, Shipwreck! and Setting Sail.

Museum on the Move has already been featured at local libraries and schools with some children's workshops, a stand at the Mini Steam on the Quay in May and featured at the GATHER space in The Dolphin Centre. Future venues include Hamworthy Park Summer Fete on 1st July and at Lighthouse Poole throughout July. Please do call by and say Hello!

We will keep you posted about this activity or you can follow www.poolemuseum.org.uk / @poolemuseum (Facebook and Instagram) / #MuseumOnTheMove #PooleMuseum



Come along to our next member's coffee-break!

All members are welcome to join us for meet-up over a coffee/tea on **Tuesday 20th June 11:00am**, meeting outside the museum to head to The Custom House to hear about the latest project news and help plan some future member events.

If you would like to attend, please do email me: info@poolemuseumfoundation.org.uk or drop me a quick message on 01202 126208 or if you have any suggestions for future e-newsletter articles or events for members. It is always lovely to hear from you!