



Croatia Norval S.C.

LTPD Participation & Player Pathway

<u>Policy Type</u>	<u>Author</u>	<u>Approved By</u>	<u>Approval Date</u>
HR/Admin.	A. Radosevic	CNSC B.O.D	Dec 1, 2022



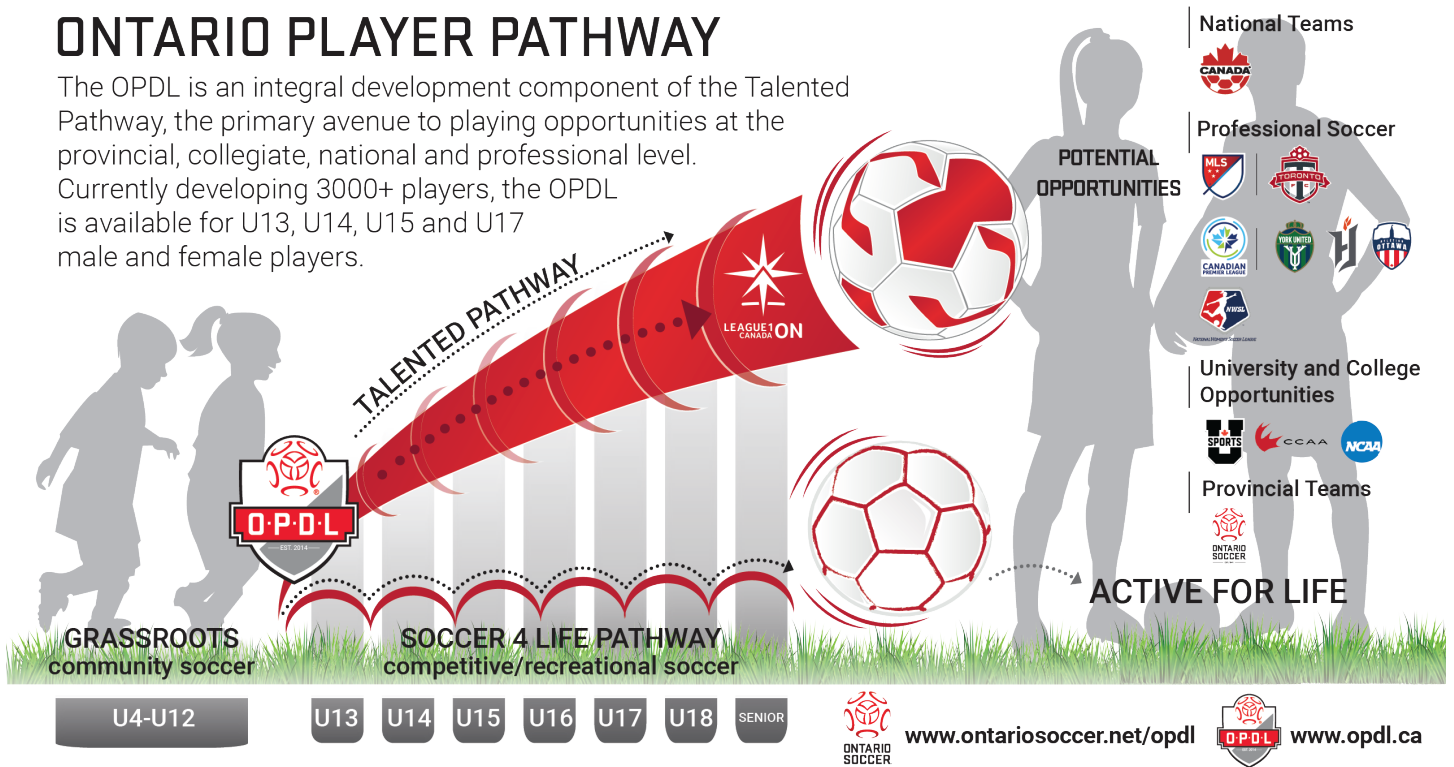
Croatia Norval S.C. LTPD Participation & Player Pathway



Croatia Norval Soccer Club (CNSC) strives to follow the LTPD model as set out by Canada/Ontario Soccer. CNSC realizes that for the betterment of the player's development, CNSC endorses players to follow the Regional & OPDL pathway they so choose. CNSC has a good working relationship with several OPDL, League 1 Reserve and League 1 License holders within the Peel Halton & Golden Horseshoe regions. When appropriate CNSC recommends players seek opportunities with these local organizations to fulfill their potential player development.

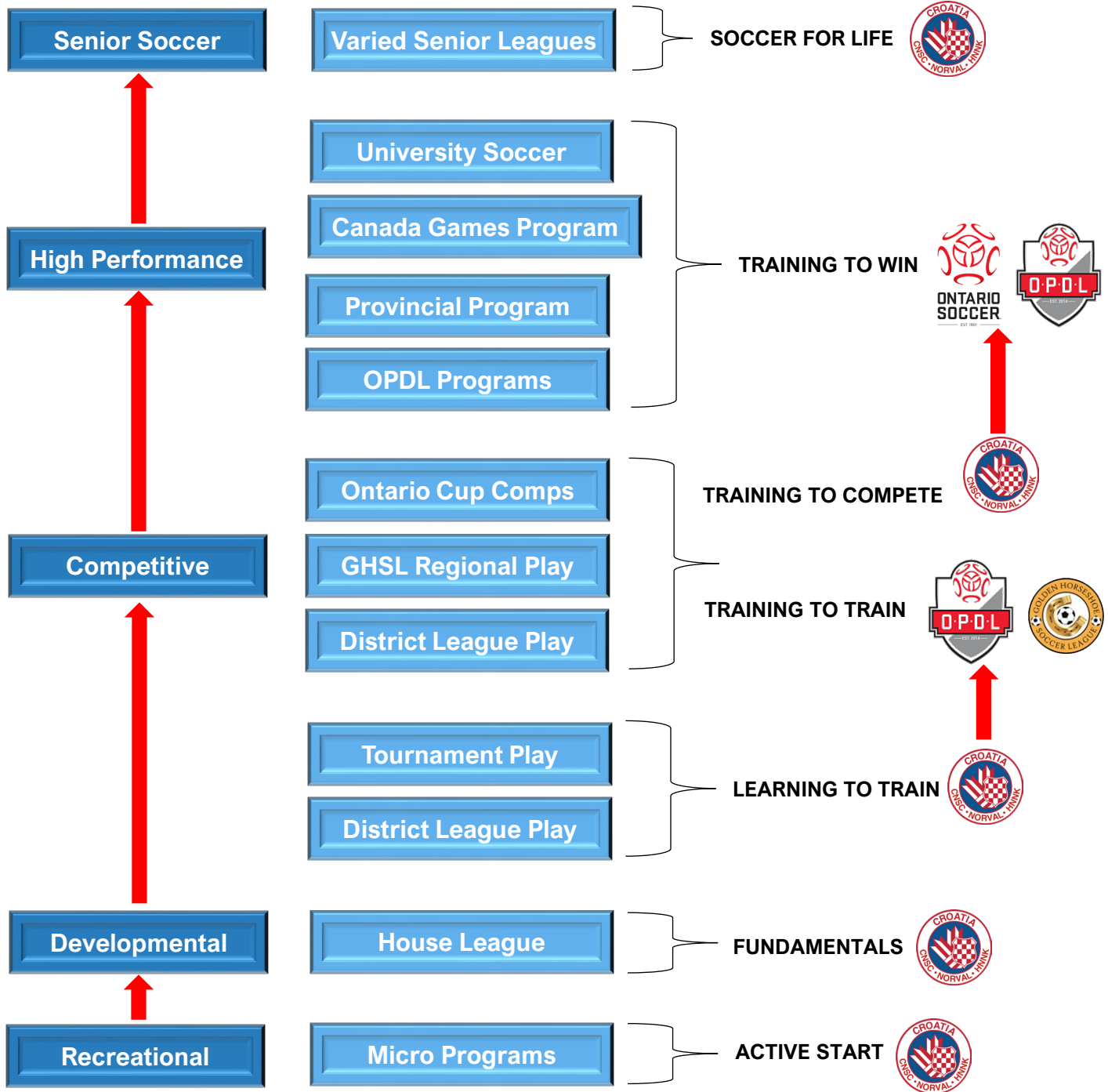
ONTARIO PLAYER PATHWAY

The OPDL is an integral development component of the Talented Pathway, the primary avenue to playing opportunities at the provincial, collegiate, national and professional level. Currently developing 3000+ players, the OPDL is available for U13, U14, U15 and U17 male and female players.





Croatia Norval S.C. LTPD Participation & Player Pathway



Rev. #	Date	Revisor	Comments
.001	Dec 1, 2022	A. Radosevic	New Document