



CLAY PUZZLING

Lesson Plans & Product Guide



- TECHNIQUES
- METHODS
- MOLDS
- LEAF FORMS
- TOOLS
- GLAZES
- & MORE!



Choose a Paragon kiln that is the perfect size just for you

Imagine what you could
make with your own
Paragon kiln



TnF-27-3
Digital Automatic
18-sided Firing Chamber
29" wide x 28 1/4" deep

Out of Paragon's huge selection, find a kiln for your exact needs. Here is a small sample of our digital automatic kilns:

TnF-27-3 (top left)

The TnF-27-3 is easier to load than the standard, 29" deep studio kilns. It is only 22 3/4" deep, yet larger inside than the 29" deep 10-sided kilns. For easy maintenance, it features sectional construction and a top row of 2" blank firebricks.

Home Artist (top right)

The portable Home Artist traveling kiln sets up in minutes. It plugs into a standard household outlet and features a collapsible luggage carrier for easy moving. Take it with you on vacation or to seminars.

The space-age ceramic fiber insulation is noted for energy efficiency. For raku firing, purchase the optional lid safety switch.

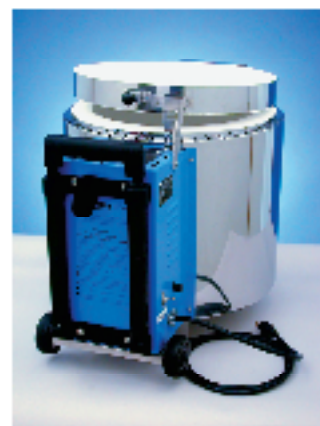
Janus-1613 (bottom left)

The Paragon Janus-1613 can fire both pottery and glass. Heating elements are mounted in the top and side-walls.

Select between glass and pottery with the flip of a switch. In glass mode, fuse and sag large glass projects placed on a single shelf. In pottery mode, fire up to cone 10, or fire several shelves of fused or cast glass.

Caldera-XL (bottom right)

The digital Caldera XL is ideal for glaze testing and firing small figurines or ceramic jewelry. It has a hinged lid, attached bottom, and steel base. The Home Artist and Caldera-XL use the same 3-key Sentry Xpress with Cone-Fire and 8 Segment Ramp-Hold. The Caldera XL, which has thick 3" insulating firebricks, fires to cone 10.



Home Artist
Digital Automatic
Firing Chamber
13" wide x 13" deep



Janus-1613
Digital Automatic
18-sided Firing Chamber
16 3/4" wide x 16 1/4" deep



Caldera-XL
Digital Automatic
Firing Chamber
7 1/2" x 7 1/2" opening
x 8" deep


Paragon Industries, L. P.

2011 South Town East Blvd,
Mesquite, Texas 75149-1122
800-876-4328 / 972-288-7557
Toll Free Fax 888-222-6450
www.paragonweb.com
info@paragonweb.com





CLAY PUZZLING Basics

Welcome to Clay Puzzling!



About 10 years ago I started playing around with moist clay. Since I had owned a traditional ceramic studio for 15 years prior, I wanted to incorporate molds because that's what I was used to working with. It made it easier to achieve successful shapes without the frustration of trying to get clay centered on a wheel or form objects using traditional hand-building methods. The term clay puzzling came about because the first shapes were all constructed with small chunks of clay, and from the outside, they looked like puzzle pieces locked together.

Clay puzzling has certainly caught on, and it has evolved from shapes to coiled wonders of raku. Now we're taking vases, turning them on their sides, and transforming them into fish and other creatures. We can easily combine multiple shapes to make mushrooms for the garden and stack up garden globes to make snowmen. Add unique textures and designs with natural materials and tools. The possibilities are endless, and the techniques and methods will continue to evolve for the next 10 years and beyond. Our website has also grown, adding how-to videos and everything needed for clay puzzling.

The fired-arts industry has offerings no other art form can deliver. The magic that happens in the kiln cannot be matched! As clay bodies by companies like Continental Clay are perfected, colors by my friends at Mayco and other manufacturers are expanded, and kilns by the experts at kiln companies like Paragon offer more creative options, we can continue to move forward and expand our abilities.

Share the magic of fired arts with friends and family, Discover all the exciting things you can create with clay and other forms of fired arts. Enjoy all the lessons and develop some of your own!

Michael Harbridge
Owner, ClayPuzzling.com
info@claypuzzling.com
(715) 281-6450



Solid Puzzling Method

Solid puzzling is the basic foundation behind the clay puzzling technique. Follow these basic steps when you want a solid design. You can also leave spaces between chunks of clay for a more open design or combine solid clay with coils or chunky looks explained on the next page. (Free how-to video at ClayPuzzling.com)

Step 1) Flatten chunks of moist clay between your fingers. Generally, about a quarter of an inch in thickness is sufficient. However, thicker clay may be needed on larger items, shapes which will have textures added, or items where parts are adhered.

Step 2) Place the pieces of clay inside one half of the mold, making certain to slightly overlap adjacent chunks. Compress clay with your fingers or a towel periodically. The clay should not pull apart if compressed properly. The harder you press, the less texture will be noticeable on the outside. Go right up to the edge of the mold.

Step 3) Complete Steps 1 and 2 to fill the second half of the mold.

Step 4) Once both halves have been filled with clay, run your fingers over the surface to make certain all of the clay parts are attached well. Make a long coil about a half inch thick and attach it around one half of the mold, just below the edge, not above. This coil will be used to join the two halves. Remove any clay above the edge of the mold.

Step 5) Pick up the other half of the mold and wrap your fingers around the edge to prevent the clay from falling out as you turn it over and place both mold halves together.

Step 6) Band the mold with a Velcro strap and use a PPT2 Press Tool with Light to press the coil from one side of the mold so it attaches to the other. Once the clay is dry enough to stand on its own, carefully remove it from the mold.

Step 7) Once it's removed from the mold, clean up seam lines by using the metal rib and wooden tools from the Royal RSetPot I Pottery Set. Add clay to fill in any gaps or openings along the seam line. Do not use water to smooth at this point; getting too much water on the item will cause it to collapse. Use water after completely dry.





Chunky Puzzling Method

Create a fun, textured clay surface by embedding dry chunks into moist clay with the chunky puzzling method. The vase shown at left was constructed using mold BP314 with Continental CCLFR Low-Fire Red Clay and dry chunks of CCLFW Low-Fire White Clay. After firing to cone 04, one coat of Mayco EL119 Burnished Steel was applied to the outside and wiped back prior to an 06 firing. But this method can be used with nearly any compatible clay bodies.

Step 1) Flatten pieces of moist clay the same way as done in solid puzzling shown on prior page.

Step 2) Break up chunks of dry clay and place them on canvas or craft foam.

Step 3) Lay the moist clay over the top of the dry chunks and press to embed.

Step 4) Lift the clay with embedded chunks and place it face down inside the mold (embedded chunks against the mold).

Step 5) Continue steps 1 through 4 to puzzle both mold halves. Create coil and attach in the same manner as the solid method shown on previous page.

Step 6) Once the piece is removed from the mold, clean up seam lines by using the metal rib and wooden tools from the Royal RSetPot1 Pottery Set. Add clay to fill in any gaps or openings along the seam line. Do not use water because it will cause the two clays used to dirty one another.

Step 7) Reach a hand or press tool inside the shape and work it along the seam line for support while pressing small chunks of dry clay into the moist exterior to disguise the seam area. This area usually does not have enough chunks and needs a few added.

Step 8) Follow firing and finishing instructions for the clay body selected.



Free how-to video at
[ClayPuzzling.com!](http://ClayPuzzling.com)



Extruder Puzzling Method

Design your ware with open areas for use with lights, candles or just a cool look with extruder puzzling. The sphere to the left was constructed using mold BP316 with Continental CCLFR Low-Fire Red Clay. After firing to cone 04, single coats of various colors of Mayco Stroke & Coat colors were applied to the outside and wiped back prior to an 06 firing. This method can be used with nearly any clay bodies.

Step 1) Extrude strands of clay onto canvas or craft foam. Don't extrude more than you will use in a short period. Depending on conditions, thin coils can dry quickly.

Step 2) Place the coils of clay randomly inside one half of the mold, making certain to overlap and cross them over one another. Make sure the start and end of the coil is attached to another coil to avoid sharp points on the final shape. Compress coils with fingers or towel periodically. The coils should not pull apart if compressed properly. Don't press so hard that the coils are completely flattened. Coils should not go above the top edge of the mold, and openings between clay loops should not allow your thumb to fit inside. Openings that are too big can create fragile, weak areas. Watch for long narrow openings as well. Make certain coils cross over those areas.

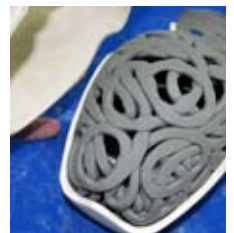
Step 3) Complete Steps 1 and 2 to finish the second half of the mold.

Step 4) Using one long coil and one half of the puzzled mold, create loops about one inch high all the way the top edge. Do not make loops around the opening of the mold. These loops will connect the two halves. Do not go higher than an inch or the coils will break off in the next step.

Step 5) Bend the loops inward so that, when the mold halves are placed together, they won't get crushed. Pick up the other half of the mold and wrap your fingers around the edge to prevent the clay from falling out as you turn it and place the mold halves together.

Step 6) Band the mold with a Velcro strap and use a PPT2 Press Tool with Light to press the loops from one side of the mold so it attaches to the other. Once the clay is dry enough to stand on its own, carefully remove from mold.

Free how-to video at
[ClayPuzzling.com!](http://ClayPuzzling.com)





CLAY PUZZLING Lesson

Puzzled Mushrooms Lesson Plan

Step 1) Open the two-part mold and remove any dust.

Step 2) Follow the steps for solid clay puzzling to puzzle each half of the egg mold. Do not put the mold halves together. In this technique, the mushroom caps are created using only half of the mold.

Step 3) Follow the steps for solid clay puzzling to puzzle the pedestal molds to create the mushroom stems.

Step 4) Once the mushroom caps are out of the mold, pinch the edges to flare them out slightly. Place them on a board covered with paper to dry.

Step 5) If the mushroom cap covers too much of the pedestal, you may need to form a clay plate inside the mushroom. Determine this by placing the mushroom cap on the chosen stem. If the cap covers too much of the stem, roll out or press a flat round shape that will fit inside the mushroom cap and prevent the stem from going up inside all the way. Do not attach the round shape in this clay stage.

Step 6) Allow sufficient drying time before firing all the parts to the appropriate cone for the clay body selected. CCLFW Low-Fire White from Continental Clay was used with these samples, and they were fired to cone 04.

Step 7) Apply two coats of Mayco Magic Metallic MM106 Steel to the mushroom caps using a Royal SG825 Stiff Fan brush. While the second coat is still damp, spray, drip, or drizzle MM305 Rapid Rust randomly over the Steel. Allow to dry 24 hours.

Step 8) Apply two coats of Mayco Magic Metallic MM102 Copper to the mushroom stems using a Royal SG825 Stiff Fan brush. While the second coat is still damp, spray, drip or drizzle a combination of MM201, MM202, and MM204 Patina tints randomly over the Copper. Allow to dry 24 hours.

Step 9) Optional sealers for Magic Metallics are available, but not required.

Garden globes made from the round sphere series of puzzler molds also look great done in Magic Metallics!



Molds: BP348, 349, 354, 520, 352 & 362

Colors: Mayco

Brushes: Royal & Langnickel

Clay: Continental Clay

Recorded webinar video available at ifiredarts.com



NEW! FREE! How-To Videos

Learn how to use and care for brushes with our NEW videos! They are all free and show you how to properly load, use and care for brushes. New videos added weekly.



Save up to 60% every day at www.ArtistPaintBrush.com! (301) 249-0846

www.ArtistPaintBrush.com

CLAY PUZZLING Lesson



Puzzled Egg Lesson Plan

- Step 1)** Open the two-part mold and remove any dust.
- Step 2)** Form a circle of clay for the center of the flower and press it into the end of the mold.
- Step 3)** Form clay flower petals and attach them inside the mold by slightly overlapping the flower center. Press together firmly.
- Step 4)** Use the hand extruder with the medium round die to create coils of clay. Press the coils inside the mold, slightly overlapping the flower petals and up to the edge of the mold. Make sure the coils cross over one another. Press firmly.
- Step 5)** Complete steps 1 through 4 for the other half of the mold.
- Step 6)** Add loops of clay to one half and follow the steps for the basics of extruder puzzling to attach halves.
- Step 7)** Remove clay shape from mold when firm enough to stand on its own. Use Royal wooden pottery tools to add texture to the flower centers and petals. Allow sufficient drying time before firing to appropriate cone for clay body selected. CCLFW Low-Fire White from Continental Clay was used with this sample.
- Step 8)** Apply one coat each of various Mayco Stroke & Coat colors over the coil portion of the egg using the Royal SG825 Stiff Fan brush. Overlap the colors and get down into all of the coils. Once dry, wipe back with a damp sponge. This also helps blend the colors.
- Step 9)** Use chosen colors of Mayco Stroke & Coat to paint two to three coats on the flower petals using a round Royal Aqualon brush. Allow to dry.
- Step 10)** Use a Royal sea wool sponge to dab one coat of Mayco Crystal Clear brushing randomly over the egg before firing to cone 06.

Molds: BP348, 349 & 354
Colors: Mayco
Brushes: Royal & Langnickel
Clay: Continental Clay
[Recorded webinar video available at ifiredarts.com](#)



Puzzled Presents Lesson Plan

- Step 1)** Open the two-part mold and remove any dust.
- Step 2)** Follow the basic steps for extruder puzzling to make the main box shape.
- Step 3)** Remove the box shape from the mold and place on a board covered with paper.
- Step 4)** Use the extruder (with the appropriate ribbon die for the size package you are completing) to make long ribbon strands. Do this on a surface where the clay will not stick, such as canvas or craft foam. Make any desired impression on the ribbons.
- Step 5)** Apply slip mixture to the back side of the ribbon and attach it to the package, starting at the bottom on one side and making your way over the top, and down the other side. Repeat for ribbon going the other way, crossing over the first ribbon on the top.
- Step 6)** Extrude additional strands of clay to create the bow. Cut strips to the desired length, fold into a loop, and pinch the two ends together. Make additional loops. Press all the loops together on a separate board covered with paper towel. Make a small loop for the center of the bow, score and attach with slip. It's best not to attach the bow to the top of the package because the weight of the bow can cause the top to sink, plus, it's easier to paint if fired separately.

Molds: B366, 367 & 368
Colors: Mayco
Brushes: Royal & Langnickel
Clay: Continental Clay
[Recorded webinar video available at ifiredarts.com](#)



- Step 7)** Allow sufficient drying time before firing to appropriate cone for clay body selected. CCLFW Low-Fire White from Continental Clay was used with these samples.
- Step 8)** Apply one coat each of various Mayco Stroke & Coat colors over the coil portion of each package using the Royal SG825 Stiff Fan brush, making certain to get down into all of the coils. Once dry, wipe back with a damp sponge to bring out the highlights.
- Step 9)** Use chosen colors of Mayco Stroke & Coat to paint the ribbons and bows using Royal Aqualon Round brushes. Add details, dots, and patterns with Mayco Stroke & Coat Accents.
- Step 10)** Allow to dry and use a Royal sea wool sponge to dab one coat of Mayco Crystal Clear randomly over the packages and bows. Place the bows on top and fire to cone 06.



CLAY PUZZLING Lesson

Puzzled Santa Jar Lesson Plan

Step 1) Open the two-part mold and remove any dust.

Step 2) Follow the steps for solid clay puzzling to create the basic vase shape. It's best to puzzle the item a little thicker because pressure will be applied in future steps to add the nose, hair and other parts. Once the vase is out of the mold, place it on a board covered with paper and set it on the AM5 or the BW-25H banding wheel so it will be easier to turn.

Step 3) Use your fingers and tools to form the nose and mouth from clay. Score (scratch lines) on the back of the nose, mouth and the areas where they will attach to the face. Attach parts using slip.

Step 4) Load the ME1 Mini Extruder with clay and attach one of the multiple coil attachments. Press the plunger to extrude stands of clay about two inches long. Use a Royal SG-995M Sable Mop to apply slip to the area between the nose and mouth and attach extruded hair. Bunch the clay up in areas to give it some texture and wave. Continue to apply slip to a small area at a time and apply hair to all areas shown and back of head.

Step 5) Add an extra coil of clay around the top for the rim of the hat. Use a wooden pottery tool to add texture. Form a clay cone shape for the hat. Pinch the bottom in so it goes down inside the vase. Curl the top around, apply slip, and attach a ball of clay to the end. then add texture. Allow sufficient drying time before firing all the parts to the appropriate cone for the clay body selected. CCLFW Low-Fire White from Continental Clay was used with this sample and fired to cone 04.

Step 6) Use various Royal Aqualon brushes to apply one thinned coat of Mayco Stroke & Coat SC-35 Gray Hare to all hair, one thinned coat of SC-31 The Blues to the hat trim and wipe back with a damp sponge. Apply two coats of SC-20 Birthday Suit to the flesh and use a sponge to dab SC-74 Hot Tamale on the nose and cheeks. Apply three coats of Hot Tamale to the hat and mouth. Apply a thinned coat of SC-15 Tuxedo to the mouth and paint in the eyes. Allow all colors to dry before applying two coats of Mayco Crystal Clear Brushing and firing to cone 06.

Molds: BP317, 318 or 319

Colors: Mayco

Brushes: Royal & Langnickel

Clay: Continental Clay

Recorded webinar video

available at ifiredarts.com



Texture Stamp Puzzling Lesson Plan

Step 1) Open the two-part mold and remove any dust.

Step 2) Follow the steps for solid clay puzzling to create the basic shapes of choice. Once the shapes are out of the molds, place them on a board covered with paper. When completing textures and stamping, set them on the AM5 or the BW-25H banding wheel so they will be easier to turn.

Step 3) Select from Mayco CD780, 1075 or 1078 Clay Design Tools to add stamp designs. Place your hand or PPT2 Press Tool inside the shape as you begin pressing the selected tool repeatedly. Use Royal RSet-Pot6 Wooden Sculpting Tools to add additional textures. Use Royal Rset-Pot4 Ribbon Cutting Tools to remove desired clay areas.

Step 4) Allow sufficient drying time before firing all the parts to the appropriate cone for the clay body selected. CCLFR Low-Fire Red from Continental Clay was used with these samples and fired to cone 04.

Step 5) Use the Royal SG825-6 Fan brush to apply one coat of Mayco EL120 Black Ice over the entire exterior of the shapes. Once dry, wipe back with a damp sponge, leaving color only in the details and deep crevices. Roll one thinned coat to the interior of each shape.

Molds: BP348, 349 & 354

Colors: Mayco

Brushes: Royal & Langnickel

Clay: Continental Clay



Step 6) Allow sufficient drying time and fire to cone 06.

This colorful vase was raku fired. See steps on page 9.



CLAY PUZZLING Lesson



Puzzled Fish Lesson Plan

Step 1) Open the two-part mold and remove any dust.

Step 2) Follow the steps for solid clay puzzling to create the basic shape. Puzzle the vase slightly thicker than usual because it will have parts and textures added. Once the shape is out of the mold, place it on a board covered with paper. Placing it on the AM5 or the BW-25H banding wheel will make it much easier to turn.

Step 3) Turn the vase on its side and gently press to flatten the side so it won't roll. Pinch out the clay on the top of the vase to form the lips. Add more clay if needed. Roll balls of clay for the eyes and flatten clay pieces for the side, top, and tail fins as well as the eyelids. Form a tongue and teeth if desired.

Step 4) Score (scratch lines) on the backs of the side fins, teeth, eyes and the areas where they will attach. Add slip and adhere. Cut slits in the top and tail where fins will be added. Add slip and press fins into the openings. Add small coils around the fins for extra support. Use a wooden tool to attach the tongue in the mouth. Allow sufficient drying time before firing all the parts to the appropriate cone for the clay body selected. CCLFR Low-Fire Red from Continental Clay was used with these samples and fired to cone 015 for a soft firing.

Step 5) Airbrush the fish with various Mayco One Stroke colors. The sample shown was airbrushed all over with OS-59 Sunflower. OS-46 Bright Red was airbrushed on the mouth, tongue, tips of fins and above the eyes. OS-1 Mirror Black was airbrushed on the tips of fins and eyelids. It was also used to paint in the eyeballs using a Royal Aqualon brush. OS-2 Snow White was used for highlights.

Step 6) Allow sufficient drying time and fire to cone 04. Apply two coats of Mayco Crystal Clear and fire to cone 06.

Molds: BP337
Colors: Mayco
Brushes: Royal & Langnickel
Clay: Continental Clay
Recorded webinar video available at ifiredarts.com



CERAMICS, POTTERY AND ART SUPPLIES

Wholesale and Retail



EVERYTHING YOU NEED UNDER ONE ROOF! COMPETITIVE PRICING ~ EXCELLENT CUSTOMER SERVICE

ART SUPPLIES 	BISQUE 	BOOKS 	BRUSHES 	CHEMICALS 	CLAY
CLAY PUZZLING 	EXTRUDERS 	FURNITURE 	GLAZES 	KILNS 	MOLDS
POTTERY WHEELS 	PUG MILLS 	SLAB ROLLERS 	SLIP MIXERS 	SPRAY BOOTHS 	WARE CARTS

7495 SW 38th St. Ocala, FL 34474

352-861-7007

www.CandRCeramics.com



CLAY PUZZLING Lesson

Raku Puzzling Lesson Plan

Step 1) Open the two-part mold and remove any dust.

Step 2) Working with Continental Clay CCRAKU low-fire clay, follow the steps for solid clay puzzling to create the basic shape. Add any desired textures. Extruder and chunky-puzzled items also work well with raku clay.

Step 2) Allow sufficient drying time and fire to cone 04.

Step 3) Apply raku glazes of choice following the instructions on the label. Do not apply glaze to the bottom of the ware.

Step 4) Place the items unstilted in the Paragon Home Artist Kiln and program as follows: Heat at full speed to 1,730 degrees Fahrenheit. Hold for 10 minutes. Allow to cool to 1,680 degrees and program a hold for several hours. At any point after the kiln reaches 1,680 degrees, the items can be removed with tongs.

Step 5) Place each glowing hot item into an airtight metal trash can lined with five to seven layers of newspaper. Allow the paper to ignite and tip and turn the raku shape within the flames.

Once most of the paper is engulfed in flames, set the shape down in the paper and place the lid on the can.

Step 6) Leave the items in the cans with the lids sealed for a minimum of 30 minutes before removing with the use of raku gloves and wiping away ash.



Molds: Any Shapes

Colors: Mayco & Clay Puzzling

Brushes: Royal & Langnickel

Clay: Continental Clay

Recorded webinar video available at ifiredarts.com

Impression Puzzling Lesson Plan

Step 1) Open the two-part mold and remove any dust. Place rubber leaf forms or other materials inside the mold with the textured side face up.

Step 2) Working with Continental Clay CCBS Buff Stoneware, follow the steps for solid clay puzzling to create the basic shape. Try to cover the leaf forms with solid pieces of clay to avoid having the puzzled lines running through the design. Make sure the clay thickness is sufficient for the depth of the leaves or materials.

Step 2) After removing from the mold, use tools to clean up the seam lines before removing the impression materials from the clay. Once smoothed, gently remove the leaves or other materials from the clay. Allow sufficient drying time and fire to cone 04.

Step 3) Apply Mayco Stoneware Glazes of choice following the instructions on the label. Do not apply glaze to the bottom of the ware.

Step 4) Place the items unstilted in a Paragon high-fire kiln and fire to cone 08.

Stoneware vase and bowl at left and below: Glazed with Mayco Stoneware glazes. Vase completed with SW-303 Manganese Wash on the leaf (wiped back) and SW103 Sisal on the main part of the vase. The bowl was completed with SW-301 Iron wash on the leaves (wiped back) and the main part of the bowl has SW-108 Green Tea.

Blue vase at left: Extruder items can be done with stoneware clay and glazed with SW-100 Blue Surf and SW-106 Alabaster or any desired colors.

Pumpkins and vase at right: Completed with low-fire clay and FREE techniques available at www.claypuzzling.com.



Molds: Any Molds

Colors: Mayco

Brushes: Royal & Langnickel

Clay: Continental Clay

Recorded webinar video available at ifiredarts.com

CLAY PUZZLING Molds



Bisque Puzzler Molds

Bisque Puzzler Molds are generally two-part molds made of ceramic bisque and designed specifically for clay-puzzling techniques. They are not designed for slip-casting methods. Each multiple-part mold comes with a Velcro strap. Textures, patterns and designs are not in the molds unless noted. Most surfaces are smooth. The tree molds are one part and have the clay work done on the outside of the molds. Free basic videos on the use of molds are available at www.claypuzzling.com. The website also contains discounted pricing for multiples of each item and studio assortments not listed here. All prices are subject to change; see the website for most current pricing.



BP300 Tall Slender Vase Puzzler Mold
\$45
14" H x 7" W



BP314 Lg. Slender Vase Puzzler Mold
\$75
17" H x 10" W



BP405 Set of 2 Wide Vase Puzzler Molds
\$95 set
SAVE \$15!
BP301 Short Wide Vase Puzzler Mold
\$45
8" H x 8" W



BP505 Large Wide Vase Puzzler Mold
\$65
10" H x 11" W



BP310 Jumbo. Rounded Vase Puzzler Mold
\$150
17" H x 13" W



BP315 Large Vase Puzzler Mold
\$150
18" H x 13" W

Special pricing online at www.claypuzzling.com when you purchase multiples of the same mold.



BP350 Traditional Vase Puzzler Mold
\$35
12.5" H x 7" W



BP400 Lg. Taper Top Vase Puzzler Mold
\$75
11.5" H x 10" W



BP375 Teardrop Vase Puzzler Mold
\$30
7.5" H x 4" W

NEW!



BP378 Tall Ribbed Vase Puzzler Mold
\$35
10.25" H x 6" W
(Ribbed texture in mold)

NEW!



BP337 Droplet Vase Puzzler Mold
\$45
8" H x 7" W



BP387 Oval Tall Vase Puzzler Mold
\$40
11" H x 7" W

NEW!



BP382 Tulip Vase Puzzler Mold
\$20
8.5" H x 4" W

NEW!



BP342 Sm. Round Vase Mold
\$25
6" H x 5" W



BP381 Tall Flower Vase Puzzler Mold
\$40
11.75" H x 6.5" W

NEW!



BP334 Narrow Top Vase Puzzler Mold
\$40
12.5" H x 7" Wide



BP522 Hour Glass Vase Puzzler Mold
\$20
7.5" H x 4" W



BP360 Round Vase Puzzler Mold
\$30
6" H x 7" W



CLAY PUZZLING Molds



NEW!

BP388 Large Round Vase Puzzler Mold
\$60
14" H x 8.5" W



NEW!

BP389 Med. Round Vase Puzzler Mold
\$40
11.5" H x 6.75" W



NEW!

BP390 Sm. Round Vase Puzzler Mold
\$30
8.5" H x 6.5" W



BP523 Sm. Traditional Vase Puzzler Mold
\$20
6.25" H x 5" W



NEW!

BP363 Fancy Vase Puzzler Mold
\$30
9.25" H x 4.75" W



NEW!

BP370 Small Plain Vase Puzzler Mold
\$25
6.5" H x 4" W

BP404 Set of 3 Round Vase Puzzler Molds
\$100 set SAVE \$30!

Special pricing online at www.claypuzzling.com when you purchase multiples of the same mold.



NEW!

BP402 Round Bottom Vase Puzzler Mold
\$35
9" H x 7" W



BP338 Octagon Vase Puzzler Mold
\$45
13" H x 8" W



NEW!

BP365 Square Vase Puzzler Mold
\$25
9.25" H x 4.25" W



BP313 Fluted Top Vase Puzzler Mold
\$25
7" H x 6" W



NEW!

BP376 Octagon Cylinder Vase Puzzler Mold
\$25
8.75" H x 3" W



NEW!

BP369 Squat Bowl Vase Puzzler Mold
\$25
5" H x 6" W



BP319 Lg. Trio Vase Puzzler Mold
\$40
13" H x 6" W



BP318 Med Trio Vase Puzzler Mold
\$30
11" H x 5" W



BP317 Sm. Trio Vase Puzzler Mold
\$20
8.5" H x 3.5" W

BP320 Set of 3 Trio Vase Puzzler Molds
\$75 set SAVE \$15!



NEW!

BP374 Short Flower Vase Puzzler Mold
\$30
6.25" H x 7.5" W



NEW!

BP371 Flat Top Vase Puzzler Mold
\$30
7.75" H x 6" W



NEW!

BP372 Short Flat Top Vase Puzzler Mold
\$25
5.75" H x 4.75" W



BP324 Small Pot Puzzler Mold
\$25
6" H x 7" W



NEW!

BP383 Large Round Pot Puzzler Mold
\$40
7" H x 9" W



NEW!

BP384 Medium Round Pot Puzzler Mold
\$25
5" H x 6.5" W

BP403 Set of 3 Round Pot Puzzler Molds
\$65 set SAVE \$15!



NEW!

BP385 Small Round Pot Puzzler Mold
\$15
4" H x 4" W



NEW!

BP386 Tall Round Pot Puzzler Mold
\$25
5" H x 6" W



NEW!

BP377 Small Trophy Vase Puzzler Mold
\$30
9.5" H x 5.5" W

CLAY PUZZLING Molds



BP346 XL. Ginger Vase Puzzler Mold
\$45
13" H x 9" W



BP327 Lg. Ginger Vase Puzzler Mold
\$35
12" H x 8" W



BP326 Med. Ginger Vase Puzzler Mold
\$25
9" H x 6" W



BP325 Sm. Ginger Vase Puzzler Mold
\$20
7" H x 5" W



BP373 Flared Pot Puzzler Mold
\$20
6" H x 6" W



BP362 Taper Cylinder Puzzler Mold
\$30
9" H x 6" W
Great mushroom bottom!

BP331 Set of 4 Ginger Vase Puzzler Molds
\$95
SAVE \$40!

Special pricing online at www.claypuzzling.com when you purchase multiples of the same mold.



BP311 XL. Cylinder Puzzler Mold
\$75
18" H x 8" W



BP520 Lg. Cylinder Puzzler Mold
\$65
16" H x 5.5" W



BP352 Tall Slender Cylinder Puzzler Mold
\$20
10.5" H x 3" W



BP550 Sm. Cylinder Puzzler Mold
\$25
9" H x 4.5" W



BP351 Sm. Slender Cylinder Vase Mold
\$15
7.5" H x 3" W



BP359 Short Wide Cylinder Vase Mold
\$25
5.75" H x 4" W



BP364 XL. Clay Pot Puzzler Mold
\$35
7" H x 9" W



BP345 Lg. Clay Pot Puzzler Mold
\$25
5" H x 6" W



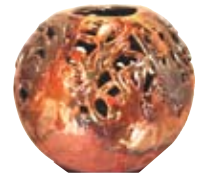
BP333 Med. Clay Pot Puzzler Mold
\$15
4" H x 4" W



BP332 Sm. Clay Pot Puzzler Mold
\$10
3.75" H x 3.5" W



BP302 Lg. & Small Wall Vase Puzzler Molds
\$40
7" H x 6" W
5" H x 4" W



BP343 Sm. Ball Vase Puzzler Mold
\$25
5" H x 5" W

BP406 Set of 4 Clay Pot Puzzler Molds
\$60
SAVE \$25!



BP340 Lg. Deep Bowl Puzzler Mold
\$60
11" H x 12" W



BP339 Deep Medium Bowl Puzzler Mold
\$35
7" H x 8" W



BP341 Squat Pot Bowl Puzzler Mold
\$25
4.5" H x 7.5" W



BP304 Large Short Bowl Puzzler Mold
\$40
4" H x 10" W



BP330 Med. Short Bowl Puzzler Mold
\$15
4" H x 6" W



BP329 Small Short Bowl Puzzler Mold
\$10
3.5" H x 4" W

BP407 Set of 3 Short Bowl Puzzler Molds
\$50
SAVE \$15!









CLAY PUZZLING Molds

Special pricing online at www.claypuzzling.com when you purchase multiples of the same mold.

					
NEW!	NEW!	NEW!	NEW!	NEW!	NEW!
BP348 Jumbo Egg Puzzler Mold \$75 9" H x 15" W	BP349 XL Egg Puzzler Mold \$55 7" H x 12" W	BP3354 Large Egg Puzzler Mold \$35 6" H x 8" W	BP355 Med. Egg Puzzler Mold \$20 4.25" H x 3.75" W	BP356 Small Egg Puzzler Mold \$15 3.75" H x 2.75" W	BP401 Set of 6 Egg Puzzler Molds \$175 SAVE \$35!

			
BP305A Lg. Tall Pumpkin Mold \$75 17" H x 7" W	BP305B Med. Tall Pumpkin Mold \$55 13" H x 6" W	BP321 Lg. Gourd Mold \$30 8.5" H x 7" W (Shown center)	BP353A Lg. Round Pumpkin Mold \$75 12" H x 9" W (Shown on left)
BP305 Set of 3 Tall Pumpkin Puzzler Molds \$150 SAVE \$20!	BP305C Sm. Tall Pumpkin Mold \$35 8" H x 5" W	BP322 Med. Gourd Mold \$25 6" H x 7" W (Shown on right)	BP353B Medium Round Pumpkin Mold \$55 8" H x 8" W (Shown on right)
BP328 Gourd Trio Set of 3 Puzzler Mold \$75 SAVE \$10!	BP323 Sm. Gourd Mold \$20 6" High x 5" Wide (Shown on left)	BP353 Set of 3 Pumpkin Puzzler Molds \$150 SAVE \$20!	BP353C Small Round Pumpkin Mold \$55 8" H x 8" W (Shown center)

					
NEW!	NEW!	NEW!			
BP409 Set of 3 Box Puzzler Molds \$65 SAVE \$10!	BP366 Large Box Puzzler Mold \$30 6" H x 5" W	BP367 Medium Box Puzzler Mold \$25 4" H x 4" W	BP368 Small Box Puzzler Mold \$20 4" H x 3" W	BP-TREE21 Lg. Tree Puzzler Cone \$40 21" H x 5.5" W	BP-TREE12 Sm. Tree Puzzler Mold \$25 12" H x 4" W
					BP500 Heart Vases Set Puzzler Mold \$30 Small 5" H x 3.5" W Large 8" H x 3.5" W

			
NEW SIZES		NEW!	NEW!
BP408 Set of 7 Globe Puzzler Molds \$195 SAVE \$45!	BP308 Med. Globe Puzzler Mold \$30 5" H x 5" W	BP379 Small Lamp Puzzler Mold \$35 9.5" H x 6.5" W	BP380 Large Lamp Puzzler Mold \$75 15.5" H x 10" W
BP316 Jumbo Globe Puzzler Mold \$75 10.5" H x 10.5" W	BP309 Small Globe Puzzler Mold \$20 3.75" H x 3.75" W		
BP306 XL Globe Puzzler Mold \$50 9" H x 9" W	BP361 XSmall Globe Puzzler Mold \$15 3.25" H x 3.25" W		
BP307 Large Globe Puzzler Mold \$40 7" H x 7" W	BP410 Mini Globe Puzzler Mold \$10 2.75" H x 2.75" W		

CLAY PUZZLING Supplies



KI200 Industrial Hand Extruder w/4 dies
\$59
8" H x 20" W



EXTRUDE2 Short Hand Extruder with 6 Dies
\$49
8" H x 13" W



DIR2 Ribbon Die Set
\$10 (Set of 2)
Additional dies available online.



HMK100 Paragon Home Artist Kiln
See website for price options.



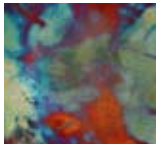
PY100 Digital Pyrometer
\$80



AM5 Economy Banding Wheel
\$29
4.5" H x 7" W



BW-25H Deluxe Banding Wheel
\$89
7.5" H x 9.75" W



RG600 Copper Matte Raku Glaze
Pint **\$13**
Gallon **\$95**



RG650 Jade Gloss Raku Glaze
Pint **\$13**
Gallon **\$95**



RG750 Kaleidoscope Matte Raku Glaze
Pint **\$13**
Gallon **\$95**



RG850 Duck Feathers Raku Glaze
Pint **\$13**
Gallon **\$95**



RGKIT Raku Glaze Pint Assortment
\$45
1 each 4 colors



MMET Mayco Magic Metallic Kit
\$30
Colors and Spritzer



Individual Mayco Magic Metallic products available online.



LG1 Raku Gloves
\$15
One Size



PS02 Mini Extruder Set With Dies
\$15



RT1 Raku Tongs (41") No Teeth
\$43



PPT1 Press Tool w/o Light
\$10



RSET-POT1 Clay Tools 8 Pc. Set
\$15



RSET-POT7 Texture Tools 6 Pc. Set
\$10



RSET-POT4 Ribbon Tools 6 Pc. Set
\$10



RSET-POT13 Hole Cutters 4 Pc. Set
\$10



RSET-POT20 Pointed Cutters 4 Pc. Set
\$10



EC100 Eye Kit
\$15 each
EK12 Set of 12 Kits **\$99**

Reusable rubber leaf forms can be used to make impressions, dimensional leaves on shapes, or clay leaf bowls and designs.



LA300 Sm. Assortment
\$45 Set 17
1" to 5" Sizes



LA200 Lg. Assortment
\$49 Set 5
8" to 14" Sizes



LP103 Holly
\$10 Set 4
2" to 3.5"



LP102 Oak
\$10 Set 3
4" to 5.5"



LP123 Grape
\$10 Set 3
2" to 4"



LP104 Mum
\$10 Set 4
1.5" to 4.5"



LP122 Maple
\$10 Set 4
2" to 4"



LP105 Dahlia
\$10 Set 4
2.5" to 4"



LP125 Strawberry
\$10 Set 4
2" to 4"



LP106 Butterfly
\$10 Set 3
2" to 4.5"



LP101 Pumpkin
\$10 Set 3
2" to 5"



LP130 Lilac
\$10 Set 4
1.75" to 3.75"



LP131 Lily Valley
\$10 Set 4
3" to 5"



LP124 Traditional
\$10 Set 4
2" to 4"



LP109 Lily Pads
\$10 Set 2
5" by 5" Each



LP107 Lg. Oak
\$10
5" by 8"



LP127 Cineraria
\$10
6" by 7"



LP119 Sm. Cabbage
\$10
6.5" by 7"



LP110 Lg. Grape
\$10
5" by 7"



LP108 Hydrangia
\$10 Set 2
6.5" to 7.5"



LP117 Cincerca
\$12
9" by 10"



LP116 Water Lily
\$12
8" by 10"



LP113 Hollyhock
\$12
9" by 11"



LP115 Lg. Lily Pad
\$12
11" by 12"



LP111 Catalpa
\$12
9.5" by 14.5"



LP126 Sycamore
\$12
8" by 8"



LP120 Arrowhead
\$12
8.5" by 12"



LP121 Canna
\$12
6.5" by 14.5"



LP112 Lg. Cabbage
\$12
10" by 11"



CLAY PUZZLING Education

Workshops, Webinars & Retreats

Would you like to learn more about clay puzzling and raku techniques with Michael Harbridge? He teaches workshops around the country at shows, educational events and in studios. He also hosts retreats each year at his studio in central Wisconsin. If you can't attend a live workshop, how about a live online webinar? It's a great way to learn from the comfort of your home, right on your computer. Full details on educational events and short how-to videos are available at www.claypuzzling.com. Hour-long recorded webinars are available at www.ifiredarts.com.



Workshops

Workshops are hosted in a studio, at a show, or an educational event. They can be as short as one hour or last as long as a day. Contact us if you're interested in hosting a workshop at your studio or event.

Webinars

Webinar Wednesday has become a very popular way to learn techniques right from your home. Registering before the live broadcast allows you access to the show where you can ask questions. You'll also get a link to the recording so you can watch it as often as you'd like, pause, forward, or rewind. Studio owners use the recordings for training or for hosting workshops. Full written techniques are also supplied.

Retreats

Retreats are the ultimate experience. Michael opens his home and studio in Iowa, Wis., so you can make many large items in a multiple-day event. Join others from around the world at the spring or fall sessions for an occasion you won't forget!

FREE Lesson Plans & Videos

We have dozens of free technique sheets and short how-to videos available at www.claypuzzling.com.

Orders & Contact Us

Order online at www.claypuzzling.com or by calling (715) 281-6450. The mailing address is P.O. Box 108, Iowa, WI 54945. E-mail inquiries to info@claypuzzling.com.

Clay, glaze, kilns, wheels, slab rollers, extruders, plus hundreds of helpful tools for puzzling projects.



Precision Applicators

- Fine detailing
- Slip trailing
- Outlining
- 2 sizes with 4 tips

Art Rollers

- Patterned roller
- Texture or surface decoration
- More than 25 designs

Art Bag

- Large and small compartments for brushes, tools, accessories
- 16" x 9" x 12"

Project Boards

- Portable work surface
- Lightweight
- No flex
- Optional canvas mats for all sizes

12x16x1/2"
10x12x1/2"
8x8x1/2"



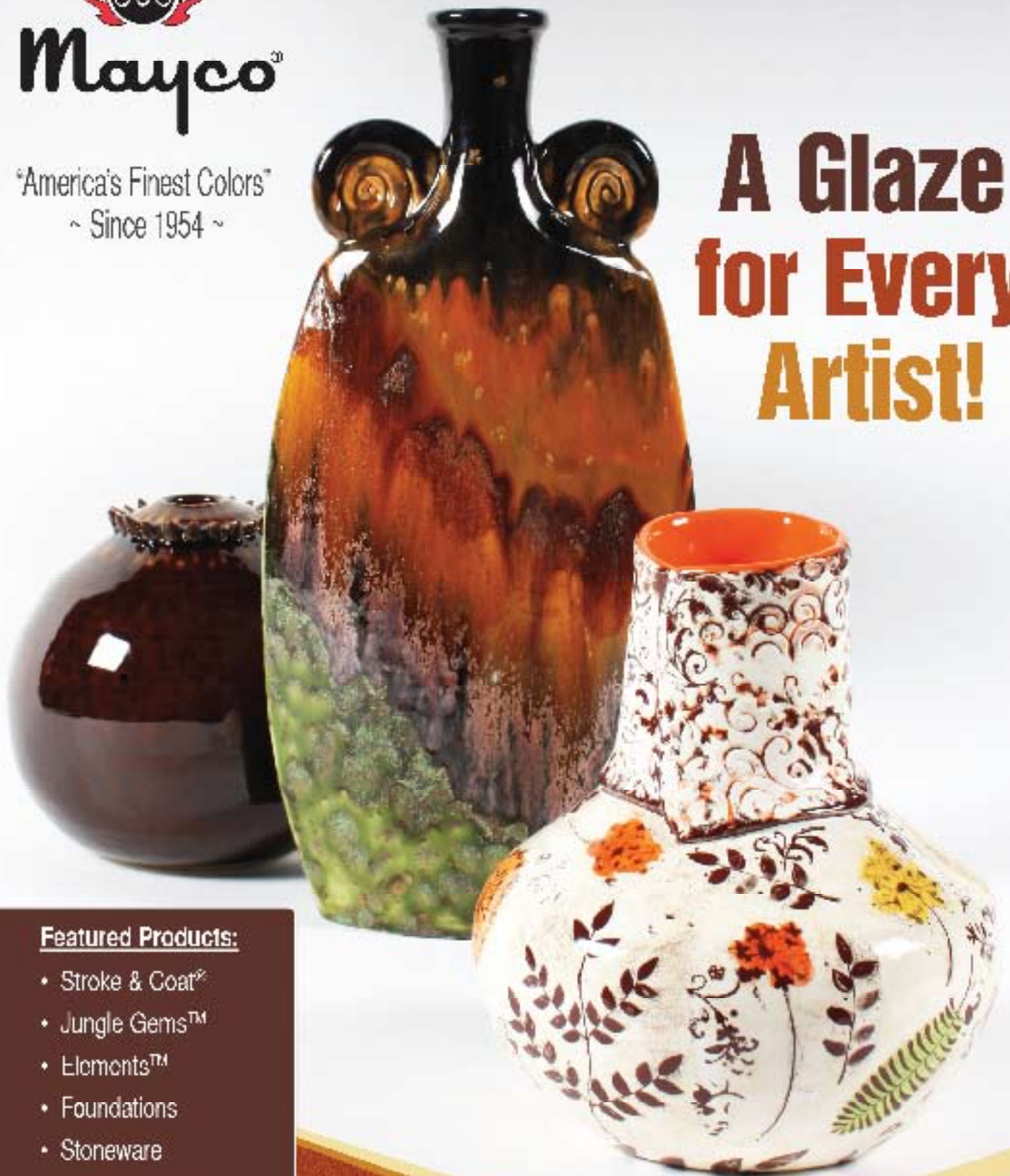
1-800-432-CLAY
CONTINENTALCLAY.COM



MaycoTM

"America's Finest Colors"
~ Since 1954 ~

A Glaze for Every Artist!



Featured Products:

- Stroke & Coat[®]
- Jungle Gems[™]
- Elements[™]
- Foundations
- Stoneware

See them all at
www.maycocolors.com