

Stamping to The Next Level (Color!)

By Artist Michael Harbridge

See this technique in action! Video recording of the live webinar available at www.ceramicarts.com.

Materials List

For Stamping:

Bisque: Various shapes of choice

Colors:

Duncan E-Z Strokes

Mayco Designer Liner

Stamps: By ClayPuzzling.com

ST1 through ST45 stamps were used on the samples shown here. Sets are also available.

Brushes & Tools:

Dagger brush

Stiff Fan

R2845-6 Glaze Fan Brush,

RD411 Sponge Rollers

Misc.

Banding Wheel

Glazed Tile

Cotton Swabs

Sea Sponge

Glass glue or Elmer's Glue

Glass of COE Choice

Compatible base

Clear cap glass

Small clear frit

Contact the artist:

Michael Harbridge

P.O. Box 108

Iola, WI 54945

info@claypuzzling.com

www.claypuzzling.com

715-281-6450



Create colorful patterns with this simple stamping technique.

Step 1) Choose your stamps. Colors other than black can be used on the stamps, but darker colors do show up best. Duncan EZ Strokes are highly pigmented colors and work best. Designer liner will also work as well. Colors like Stroke & Coat, Concepts and Fun Strokes also work, but they are not as highly pigmented and may not show up as well, especially with lighter colors.

Step 2) Add chosen color to a glazed ceramic tile and roll the sponge roller over the color repeatedly to load the entire roller. Roll many times to get the color evenly distributed to the sponge. You don't want the roller to be dripping with color, but you want the sponge saturated.

Step 3) Gently roll the loaded sponge roller over the stamp to apply color. Don't press hard, or it will cause the color to puddle in the lower areas of the stamp. If that does happen, use a cotton swab to remove color from the area, and roll again with color. Check outer edges of stamp for color. Use cotton



swab on edges to remove color. Work quickly so the color does not dry on the stamp before going to next step.

Step 4) Lift the stamp by the edges, turn over, and press into place and press over entire stamp. Use fingers from one hand to hold the stamp in place, and the other to press. If working on a rounded edge, press the main area of the stamp on the flat area, and then continue to work the stamp around the curve. Slowly lift the stamp, making certain it's made contact on all areas. If not, press back down to fill any missed spots.

Step 5) Continue to add more stamp designs and allow them to go off the edges of shapes. Always reapply color to the stamp with the roller each time you stamp.

Step 6) Use various colors of Designer liner to dot in colors within your design. You don't have to color in every section and space. Look for an even distribution of color. Sometimes it may only be adding a dot of color at a point. Be sure to always shake the Designer Line well before using, and always turn upside down and give gentle shake, and little squeeze on a paper towel to get air out before going to piece.

Step 7) Another option is to blend colors, wet into wet within your stamp design. Do small sections at a time, and drag the tip into a wet color to create the blend. Be careful not to drag the tip through dry color, as it can plug the tip. If that happens, use the pin to clear the tip.

Step 8) Use a banding wheel and dagger brush to band black lines (or colors of choice). You can also use a sea sponge to dab color along the edge. E-Z Stroke or Designer Liner will work best for either method.

Step 9) Use a stiff fan brush to splatter black (or colors of choice) over the surface. This helps disguise any little specs of color that may have appeared on blank areas and adds to the overall design.

Step 10) Allow all colors to dry and dip or apply clear glaze of choice and fire to appropriate cone for clay body and glaze selected.

Create pre-stamped ware in your studio or for workshops!

Make money! By stamping designs in black and firing to the appropriate temperature for the ware, it makes the stamp pattern permanent and ready for customers to work on. If they make a mistake, they can wipe the color away without fear of smearing the stamped design.

Glass Application

This same method can be used on glass! And the really cool part, it will work on any COE. But, these colors have to be capped with clear glass when fired. So select your base glass, create your design, add color, cap and fire to a full fuse program like you would any glass.

Here are some tips for glass application

- Always leave a space around the edges where the glass can fuse to glass. Approximately a minimum of a quarter inch. De-





signer liner is clay and glass will pull back if the color goes all the way to the edge.

- If you need to remove a small amount of color, it may be easier when the color is dry, or close to dry and use a toothpick to scrape away.

- When you slump or drape these shapes, thin lines made with E-Z Stroke will stretch if the glass starts pulling. Heavy applications of Designer Liner can pull apart as the glass stretches.

Join the Webinar Club and get access to all these great recorded webinars! Full details are at www.ceramicarts.com, and click on the education tab.

Check out all the great products at www.claypuzzling.com! Don't forget to use any discount codes offered for a limited time when you participate in webinars or the Webinar Club.

- ~ Clay Puzzling Molds
- ~ Stamps
- ~ Stencils
- ~ Tools
- ~ Leaf forms
- ~ and so much more!

Did you miss the webinar showing how these same stamps can be used with clay? Join the Webinar Club and you'll get that recorded webinar, along with hundreds of others for free!



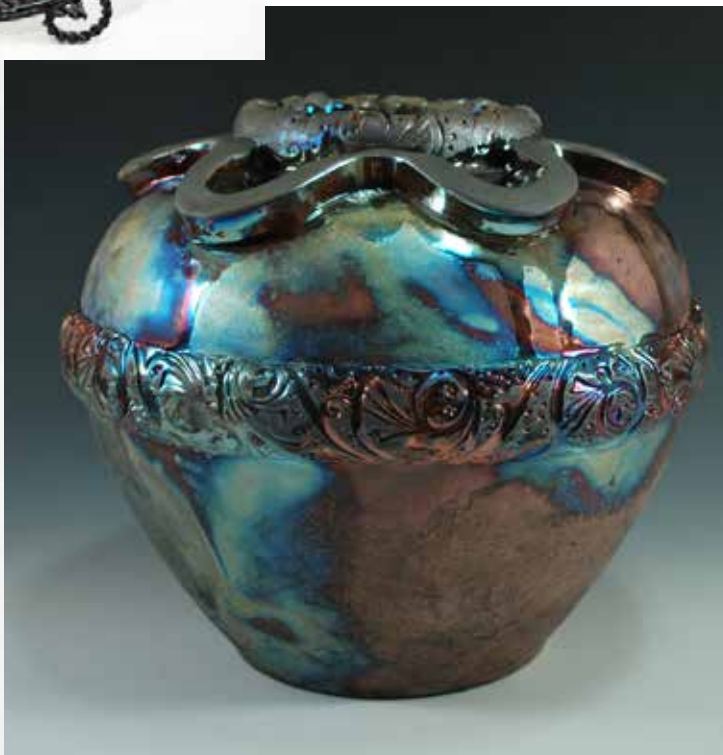
Would you like to learn more techniques from Michael Harbridge?



Michael Teachers workshops around the country in a variety of methods. Host a workshop in your studio. Contact Michael at info@claypuzzling.com.



Watch for updates on his facebook page. www.facebook.com/michael.harbridge or join his mailing list at www.ClayPuzzling.com.



Take the ultimate workshops with Michael Harbridge!

Join him in his central Wisconsin studio that has been completely renovated to accommodate up to 24 students making a variety of projects including clay building, glass, traditional and not so traditional methods. Construction is near completion for new added space and an indoor/outdoor raku kiln room with electric and gas kilns.

Get all the details at www.claypuzzling.com or join the mailing list to get notifications.



New addition opened
May 2019 for the annual
spring retreat.

