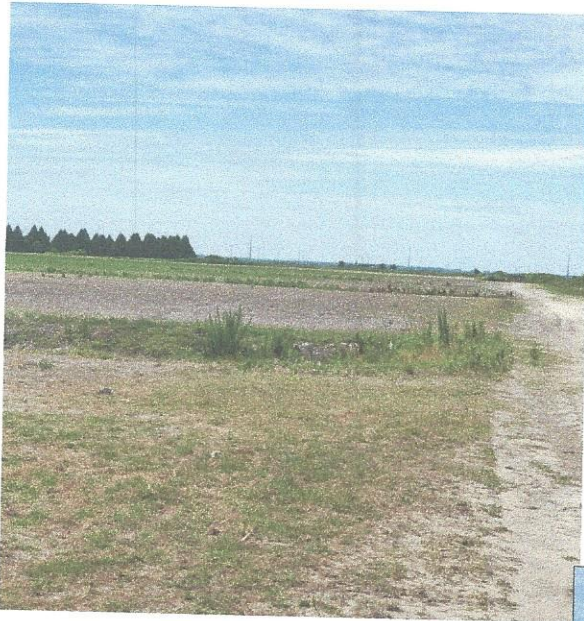


For Sale

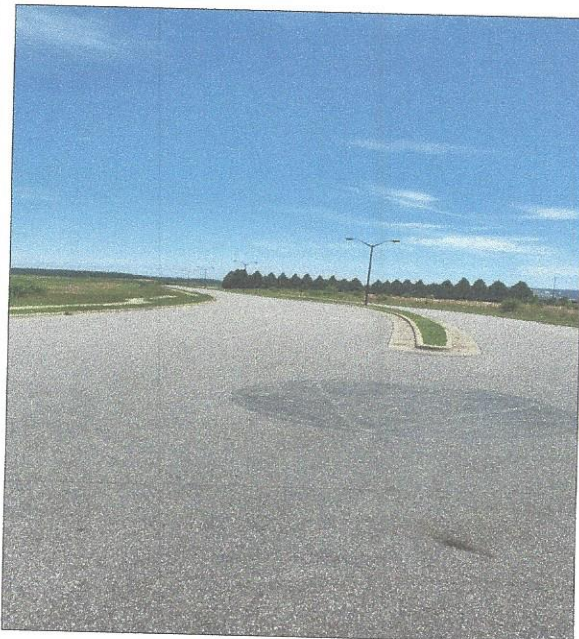
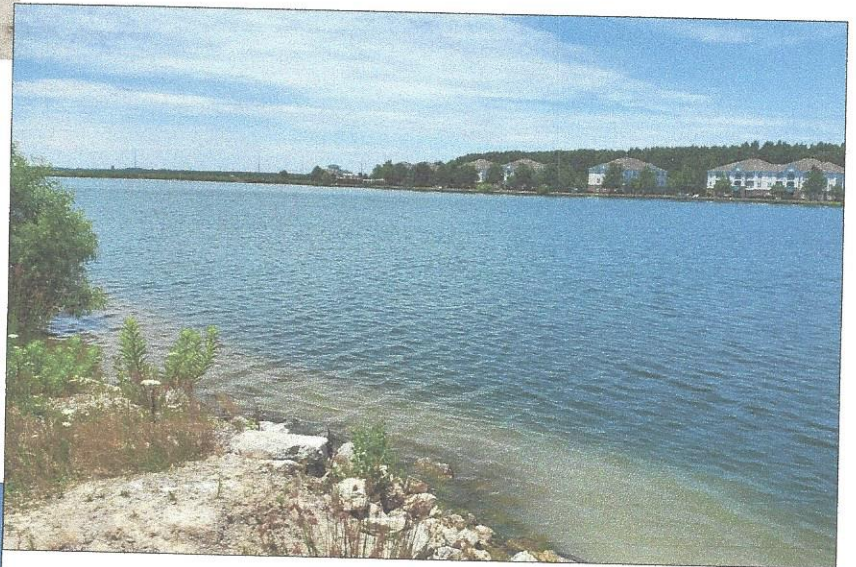


Property Details

89.91 acres total by survey

This includes the pond and approx. 33.4 acres high ground available to put 12 units to the acre.

The pond is generally crystal clear with depths up to 40 feet deep. Excellent recreational opportunities for small boats and fishing. This man made pond is 50 acres plus. A beach area could easily be added to create an area to be enjoyed by possible residents.



Partial Infrastructure is already in place on the west side with 2 storm water ponds, paved roads with street lights, and underground utilities. Sewer and water is available to this site.

**ALBEMARLE LAND
AND TIMBER SERVICES, INC**