

Guiceland Cemetery Newsletter

April 2014

This is the second Annual Newsletter for the Guiceland Cemetery Association. It is the result of the work of Jo (Morehead) Oster that we have this treasure. Many of last year's recipients of the first Newsletter were very complimentary of the Newsletter and information. Our thanks go out to Jo for making this possible this year.

If you have information or suggestions for next year's Newsletter, please contact Jo at 903-764-5906. If you know of friends or family members that would benefit from receiving the Newsletter, please furnish names and addresses to Jo or one of your Board Members. Your input and suggestions will help by giving the Board of Directors what you, the members of Guiceland Cemetery, think are important.

Looking forward to seeing you at the clean-up day May 3 and Guiceland Cemetery Memorial Day, May 25. The Annual meeting is held each year at 10 AM prior to the service at 11 on the last Sunday of May.

Veterans Buried at Guiceland

Guiceland is honored to be the final resting place for 127 veterans. 9 veterans of CSA, 12 veterans of WWI (1 KIA), 75 veterans of WWII (3 KIA), 14 veterans of Korea (2 KIA), and 10 veterans of Viet Nam (2 KIA).

Guiceland History Notes

Some of our graves are not marked in manners that are preferable to maintaining information like we would wish. An example is a red sand stone marker that simply says "Berry Gibson."

Mr. Gibson, a little research shows, was born "Erasberry (or Erasbury) Gibson" August 20th, 1843 in Newton County, Mississippi. According to his death certificate, he died April 9th, 1935 at the ripe old age of 91 years, 7 months, and 19 days! A local legend, Dr. Sam Kennedy of Grapeland, signed his death certificate and the undertaker is listed as "Kennedy Brothers" of Grapeland. Mr. Gibson's father was Frank Gibson and his mother was Polly Walker, both born in Mississippi.

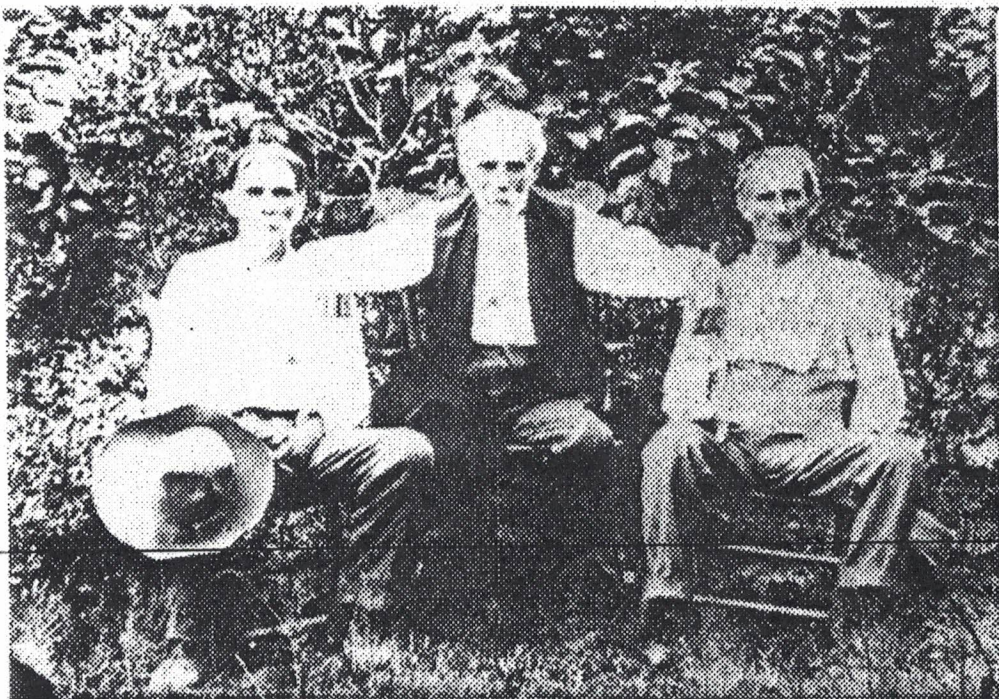
In the book, Trinity County Beginnings, Berry Gibson is listed as having 10 children and living in the Slocum area.

As did many of the men buried in Guiceland, Berry Gibson was a Confederate soldier. Records indicate he saw service in two Mississippi units, the 26th Mississippi Infantry and the 32nd Mississippi Infantry. In the 32nd, he was in Company I, the Johnston Avengers, raised in Tishomingo County, and in the 26th he was in Company B. These units saw action from Corinth, Mississippi to Missionary Ridge, Tennessee, to Chickamauga-Chattanooga. He was fortunate to have survived such violent conflicts.

A memorial page of the 26th (www.26thmississippi.com) list Franklin, George, and A. A. Gibson as having served alongside Berry. Many of the Confederate units were organized in one town and the companies were often comprised of relatives, friends, and neighbors.

So, from a little red sand stone marker, Berry Gibson's memory still survives. Perhaps some family member will one day provide Mr. Berry with a more suitable reminder of a life valiantly lived.

David Franklin



L-R: Amos Gibson, Erasberry (Berry) Gibson, Isaiah (Zay) Gibson



**Out East Elkhart Way
By Uncle John Miller
(From The Elkhart Record, June 5, 1941)**

I wish to tell you of our trip to Guiceland last Sunday. It was the day to decorate the graves of the dead with flowers. They call it Memorial Day, or Decoration Day, or you may call it Homecoming Day to visit the graves of friends and loved ones, relatives, and dear old mothers and father, brothers and sisters and dear children who have passed out of earthly lives many long years ago and pray for those who gave us life. All kinds of people, and the best of all is the hearty welcome you will receive from those old time plain folks asking you to eat with them. While there are many of them, poor people, they have the old time hospitality born in them, the best people on earth. There are also God fearing people that you will find in all walks of life. In placing flowers on the graves of the dead, don't for forget to scatter many to friends and loved ones while they live and they will always love you for it.

Guiceland Cemetery Runs on Your Donations

The money it takes to operate and maintain the cemetery grounds comes from your donations. The Guiceland Cemetery Association accepts tax deductible donations at the annual Memorial Day Service, the last Sunday in May and by mail. Our mailing address is: P. O. Box 571, Grapeland, TX 75844.

Stake Your Claim and Claim Your Stake

Burial plots at Guiceland Cemetery are never sold. As a member of the Guiceland Community, you and your family are entitled to reserve burial plots at no cost, but donations are appreciated. The donations are used to cover ongoing expenses such as utilities, insurance, mowing, and building, ground and road maintenance. The records of all reserved plots are maintained on the "Official Plat" which is kept by the cemetery designated Caretaker, Bryan Willis. If you have plot(s), please check with Bryan Willis to confirm that they are correctly noted on the Official Plat. Plot reservations are only valid if your name is on the Official Plat.

Contact Information

Edward Willis 936-546-0609

Tracy Salmon 936-687-4076

Jim Gaines 936-687-4827

D. Franklin 903-478-2308

Randy Teets 903-478-2702

Pat Wallace 903-478-3933

Donna Garrison McEwen 903-721-2826

Joe Chaffin 903-478-3292

Joe Garrison 903-561-3752
