

9to5[®] seating

3211 Jack Northrop Ave.
Hawthorne, CA 90250

PHONE
888.925.SEAT

FAX
866.925.SEAT

EMAIL
sales@9to5seating.com

9to5seating.com
Follow us: @9to5seating



©2018 9to5 Seating



D3 Family of Brands



9to5[®] seating

HAWTHORNE, CALIFORNIA

Corporate Headquarters, Assembly Plant



about 9to5[®]
s e a t i n g

a perpetually forward-thinking company

9to5 Seating is a vertically-integrated, privately owned company, founded in 1986, which specializes in the design and production of ergonomic office seating to accommodate the rigorous demands of today's office environments.

9to5 Seating presents an extensive collection of executive, task, guest, conference, stool and lounge seating. Customization is an everyday demand that 9to5 Seating welcomes; seats, controls, arms, chair adjustments, finishes, and upholstery options are plentiful.

9to5 Seating combines its state-of-the-art, in-house manufacturing systems with a commitment to continuous improvements in all phases of the operation. With over 500,000 sq. ft. of manufacturing resources, we are confidently empowered to deliver products offered at unparalleled pricing, with quality built into every phase of manufacturing.

New in 2018

In 2018, 9to5 Seating introduced new innovative seating options for use in executive, conference, task, lounge & waiting areas. Seating solutions for your dynamic workstyle.

SOL



Model 3680
Page 12

LUNA



Model 3460
Page 8

NEO



Model 3160
Page 10

MIMI



Model 1050
Page 58

LILLY



Model 9111
Page 78

MILA



Model 3760
Page 44

BELL



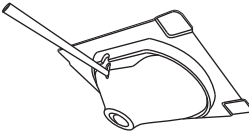
Model 7010
Page 60

CORE
STOOLS



Model 2266/2268
Page 60

R2
CONTROL

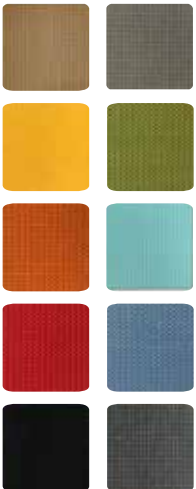


NEW
PLASTIC COLORS



Page 90

NEW
M4 MESH



Page 93

NEW
VIVID FABRICS



Page 88

chairs and fabrics

task

Luna.....	8	NEW
Neo.....	10	NEW
Sol.....	12	NEW
Core.....	14	
Cosmo.....	16	
Cosmo Mesh.....	18	
Cydia.....	20	
Cydia Mesh.....	22	
Vesta.....	24	
Aria.....	26	
Theory.....	28	
Strata.....	30	
Strata Lite.....	32	
Vault.....	34	

Brio.....	36
Agent.....	38
Logic.....	40
Logic Plus.....	42

executive and conference

Mila.....	44	NEW
Acclaim.....	46	
Diddy.....	48	NEW
Cortina.....	50	
Bristol.....	52	
Axis.....	54	
Cayman.....	56	

guest, stacking, nesting

Mimi.....	58	NEW
Bell.....	60	NEW
Zoom.....	62	
Link.....	64	
Bella.....	66	
Bella Mesh.....	68	
Shuttle.....	70	
Shuttle Mesh.....	72	
Kelley.....	74	
Indy.....	76	

lounge

Lilly.....	78	NEW
Sophie.....	80	
Sophie Tables.....	82	



@nce.....	84
-----------	----

Textiles & Fabrics

Avant.....	86
Bingo.....	86
Crepe.....	87
Echo.....	87
Matrix.....	88
Mosaic.....	88
Pauly.....	89
Tango.....	89
NEW Vivid Fabrics.....	90
Leather.....	91
NEW Plastics.....	92
Mesh.....	93
NEW M4 Mesh.....	94

NEW luna TASK MEETS ERGONOMIC COMFORT



Gray and black plastic frame colors with 18 mesh back colors

4-way adjustable arms and fixed loop arms

Seat slider standard

Nylon base standard; polished aluminum base optional



Height adjustable lumbar (optional)

Ergonomic contoured seat

Choose from four synchro controls including two passive weight balanced mechanisms

Shown: 3460-W1-A45B-PBK-C6

3460



3460



3466



features

- Sleek contemporary design with the choice of black or gray frame
- Multiple synchro controls available including 2 passive weight balanced options
- Three arm options including 4-way adjustable arms and 2 fixed conference arms
- Seat slider standard
- Height adjustable lumbar (optional)
- Warranted to 300 lbs.

QUICK SHIP: ExpressShip fabrics, M2 and M4 mesh ship as fast as 5 business days.

GSA SIN# 711-18



Choose between white and gray frame and mesh colors

6-way adjustable arms or fixed loop arms

Seat slider standard

Nylon base standard; polished aluminum base optional

Height adjustable lumbar standard

Multiple synchro controls including a passive weight balanced option



Shown: 3160-W1-A23G-PGG-C6

3160



3160



3166



features

- Styling, comfort and value with choice of gray or white frame color
- 6-way adjustable arms or conference arms
- Multiple synchro controls including a passive weight balanced option
- Height adjustable lumbar and seat slider standard
- Warranted to 300 lbs.

QUICK SHIP: ExpressShip fabrics ship as fast as 5 business days.



Flexible back promotes movement

6-way adjustable arms

Black plastic frame color

Advanced weight balanced synchro with 4 position tilt limiter



Aluminum accents with polished or silver powder coat finishes

Integrated seat slider and height adjustable lumbar standard

Aluminum base standard

Shown: 3680-W2-A48-PDG-PF-A-BA36P-C6

3680



3680



features

- Modern elegant design with aluminum accents
- Flexible back promotes movement
- Ergonomic features including weight balanced synchro, adjustable arms, adjustable lumbar and seat slider
- Back design allows full range of movement of shoulder and arms
- Warranted to 300 lbs.

QUICK SHIP: ExpressShip fabrics ship as fast as 5 business days.

core

CONTEMPORARY LINES FOR YOUR WORKSPACE



Plastic outer back provides durability against hard surfaces

Molded foam over mesh suspension for ultimate comfort

Weight balanced syncho, knee tilt or synchro with back angle adjustment

Hubless casters available



Ratchet back height adjustment standard

6 way adjustable arms and fixed arms available

Seat slider optional

Nylon base standard; polished aluminum base standard

Shown: 2260-W1-A22G-PGA-BA11G-C22G

features

- Stylish durable poly outer back in gray or black
- 6-way adjustable arms and fixed conference arms
- Knee tilt or Multiple synchro controls including passive weight balanced option available
- Ratchet back height adjustable lumbar standard
- Standard with Y5 synchro control
- Warranted to 300 lbs.

2260



2260 GT



2268



cosmo

THIN AND SLEEK DEFINES THIS BOLD STYLE



Slim profile with detailed stitching and craftsmanship

2-way adjustable arms or fixed conference arms

Dynamic synchro with 11 locking positions and forward seat angle adjustment

Polished aluminum base with chrome accented casters standard



Molded seat foam with waterfall edge

Seat slider standard

Shown: 3220-X2-A38-UB-C6

features

- Slim profile with refined European styling
- Height adjustable or conference arms available
- Subtle but effective lumbar support
- Polished aluminum base standard
- Seat slider standard
- Warranted to 300 lbs.

3220



3220 GT



3230



QUICK SHIP: Express Ship fabrics and L3 leather ship as fast as 5 business days.

GSA SIN# 711-18

cosmo mesh

CONTEMPORARY STYLE,
ELEGANCE AND COMFORT



Multiple mesh colors available
(MS, M1, M2, M3, M4)

Seat slider standard

Dynamic synchro with 11
locking positions and forward
seat angle adjustment

Polished aluminum base with
chrome accented casters
standard



2-way adjustable arms
or fixed conference arms

Molded seat foam with
waterfall edge

Shown: 3250-X2-A38-MB-BA10P-C7

features

- Slim profile with refined European styling
- Multiple mesh colors available (MS, M1, M2, M3, M4)
- Height adjustable or conference arms available
- Polished aluminum base standard
- Seat slider standard
- Warranted to 300 lbs.

3250



3250 GT



3260



QUICK SHIP: ExpressShip fabrics and M1 mesh ship as fast as 5 business days.

GSA SIN# 711-18

cydia

ORGANIC DESIGN MEETS ERGONOMIC EXCELLENCE



Upholstered model includes woven mesh beneath fabric. Choose among thousands of textiles with 14 mesh colors

Height adjustable lumbar (optional)

Three plastic frame colors in white, gray and black

Nylon base standard with caster or stationary glides



Loop arms or 6-way adjustable arms

Aluminum base available in polished, silver and black powder coat finishes

Shown: 3300-K3-A34-PGG-UP-BA9G-C6

features

- Collaborative, Conference, Stool & Task
- Multi-adjustable or Conference arms available
- High design and comfort for a budget conscious price
- Swivel-tilt and knee-tilt controls promote ergonomic comfort
- Upholstered option includes woven mesh beneath fabric
- Warranted to 300 lbs.

3300



3310



3300 GT



3306



QUICK SHIP: Express fabrics and M1 mesh to ship as fast as 5 business days.

GSA SIN# 711-18

cydia mesh

ORGANIC DESIGN MEETS
ERGONOMIC EXCELLENCE



14 mesh colors for seat and back

Height adjustable lumbar (optional)

Three plastic frame colors in white, gray and black

Nylon base standard with casters or stationary glides



Loop arms or 6-way adjustable arms

Aluminum base available in polished, silver and black powder coat finishes

Shown: 3300-S3-A34-PGG-BA9G-C6

features

- Collaborative, Conference, Stool & Task
- High design and comfort for a budget conscious price
- Choice of three frame colors and 14 mesh colors
- Multi-adjustable or Conference arms available
- Swivel-tilt and knee-tilt controls promote ergonomic comfort
- Warranted to 300 lbs.

3300



3310



3300 GT



3315/3316



3306



QUICK SHIP: ExpressShip fabrics and M1 mesh ship as fast as 5 business days.

GSA SIN# 711-18



All mesh or mesh back with upholstered seat models

Choice of 2-way or 6-way adjustable ergonomic arms with fingertip controls

Black, Silver or Polished Aluminum accents

Synchro control with fingertip adjustments

Choose between three frame colors and six mesh colors

Integral frame lumbar

Aluminum base standard in polished, silver or black powder coat finishes



Shown: 3065-X1-A30-PF-M11

features

- All mesh or mesh back with upholstered seat models
- Synchro control with fingertip adjustments
- Choice of 3 frame colors and 6 mesh colors
- Black, Silver or Polished Aluminum accents
- Warranted to 300 lbs.

3060



3080



3085



3066



3061





Pull handle for easy mobility

18 mesh colors available

Multiple synchro controls

Nylon base standard;
polished aluminum base
optional

Height adjustable lumbar
(optional)

Multiple adjustable arm
options; fixed arms
available

Molded foam over mesh
suspension seat

Seat slider with Y4 control



Shown: 1880-Y4-A40-BA9B-C6

features

- Suspension seat incorporates high-density foam overlay with mesh interior for ultimate comfort
- Choice of 18 mesh back colors
- Multiple synchro control options
- Six arm options
- Seat slider standard on Y4 control
- Height adjustable lumbar (optional)
- Warranted to 300 lbs.

1860



1880



1860 GT



1866



theory

THE FACTS SUPPORT THEORY AS THE SMART CHOICE



All mesh or mesh back with upholstered seat models

Choose between 14 mesh colors

Ratchet back with independent height adjustable lumbar

Multiple adjustable arm options and fixed loop arms

Multiple synchro controls

Aluminum base optional in polished, silver or black powder coat finishes



Shown: 2160-Y3-A36-M11-BA9B

features

- All mesh and mesh back with upholstered seat models
- Adjustable and fixed arm options
- Multiple synchro controls
- 14 mesh colors
- Ratchet back with independent height adjustable lumbar
- Warranted to 300 lbs.

2170



2180



2190



2166



2176



QUICK SHIP: ExpressShip fabrics and M1 mesh ship as fast as 5 business days.

GSA SIN# 711-18

strata

LET STRATA FLOAT INTO YOUR OFFICE



All mesh or mesh back with upholstered seat models

Choice of fixed or 6 adjustable arm styles

Heavy duty synchro control (Heavy Duty multi-shift 24/7 350 lb. option available)



Height and depth adjustable lumbar standard

Aluminum base standard

Shown: 1560-Y2-A8S-SF-BA2S-C4

features

- All mesh or mesh back with upholstered seat models
- Heavy Duty Synchro control
- Height and depth adjustable lumbar standard
- Seat slider (optional)
- Aluminum base standard
- Warranted to 300 lbs.

1570



1580



1590



1566



1576



QUICK SHIP: ExpressShip fabrics and T01 mesh ship as fast as 5 business days.

GSA SIN# 711-18

strata lite

LET STRATA FLOAT INTO YOUR OFFICE



All mesh or mesh back with upholstered seat models

Choice of 7 arm styles or armless

Simple synchro control



Height and depth adjustable lumbar standard

Nylon base standard; polished aluminum base optional

Shown: 1545-Y1-A8B

features

- All mesh or mesh back with upholstered seat models
- Simple synchro controls
- Height and depth adjustable lumbar standard
- Seat slider (optional)
- Nylon base standard, Aluminum base optional
- Warranted to 300 lbs.

1535



1555



1537



1546



1536



QUICK SHIP: ExpressShip fabrics and T01 mesh ship as fast as 5 business days.

GSA SIN# 711-18

vault

GOES BEYOND THE EXPECTED



18 mesh colors available

7 adjustable arm options and fixed loop arms

Multiple synchro controls

Ratchet back height adjustment for lumbar support standard

Seat slider standard

Nylon base standard; polished aluminum base optional



Shown: 1460-Y1-A40-BA9B

features

- Knee tilt and Multiple synchro controls
- Ratchet back height adjustable lumbar standard
- Seat slider standard
- Adjustable and fixed arm options
- 18 mesh colors
- Warranted to 300 lbs.

1460



1460



1480



1466



brio

MESH BACK CHAIRS TAILORED TO YOU



Breathable mesh back provides comfort and support

6 arm options

Reverse seat slider standard

Multiple control options



Molded seat foam with waterfall edge

Nylon base standard

Shown: 2060-Y1-A2-BA9-C6

2060



2060



2066



features

- Advanced styling and sensible value
- Choice of synchro tilt or multi-function control
- Reverse seat slider standard
- Adjustable lumbar available
- Heavy duty multi-shift option for M1 and Y2 controls
- Warranted to 300 lbs.

QUICK SHIP: ExpressShip fabrics and T01 ship as fast as 5 business days.

GSA SIN# 711-18

agent

LENDING COMFORT, DURABILITY
AND VALUE TO EVERY PROJECT



Plastic protective outer back

Eight arm options

Ratchet back height
adjustment standard with
M1, R1, Y2 and PI controls



Molded seat foam with
waterfall edge

Nylon base standard

Shown: 1660-S2-A4-BA1B-C1

features

- Agent offers cost effective features and highly adjustable ergonomic functions
- Choose from 6 control and 8 arm options
- High resilient molded foam on seat and back
- Plastic protective cover on outer backs
- Optional seat slider available
- Warranted to 300 lbs.

1425



1660



1426



1666



QUICK SHIP: ExpressShip fabrics ship as fast as 5 business days.

GSA SIN# 711-18



ERGONOMICS, TRADITIONAL TASK
STYLING AN - UNBEATABLE VALUE



Ratchet back height
adjustment standard with M1,
R1, Y2 and P1 controls

High resilient molded foam
on seat and back

Multiple adjustable arm
options and fixed loop arms

Seat slider optional

Heavy Duty multi-shift
350 lb. option available

Multiple control options
depending on application

Shown: 1760-S2-A4

features

- Task, Conference & Stool
- Low, Medium & High back models available
- Molded foam seat with waterfall seat edge
- Optional seat slider
- Heavy duty multi-shift option for M1 and Y2 controls
- Warranted to 300 lbs.

1725



1760



1780



1726



1766



QUICK SHIP: ExpressShip fabrics ship as fast as 5 business days.

GSA SIN# 711-18

logic plus

PLUS SIZE ERGONOMICS, TRADITIONAL TASK STYLING - AN UNBEATABLE VALUE



Ratchet back height adjustment for lumbar support standard

High resilient molded foam back is 23.5" wide

Choose from armless, 4-way and 10-way adjustable arms or breakaway arms

High resilient molded foam seat is 25" wide

Heavy duty multifunction control with seat slider standard

Warranted to 500 lbs

Shown: 1790-M2-A5



features

- Ratchet back height adjustable lumbar standard
- 10 year single shift warranty on structural and mechanical components
- Heavy duty base, gas lift and control
- Seat slider standard
- Additional options include ballistic nylon option for protection from utility belts and height adjustable breakaway arms
- Warranted to 500 lbs.

1790



1790



1790



QUICK SHIP: ExpressShip fabrics ship as fast as 5 business days.

GSA SIN# 711-18

NEW mila

ELEGANT, INTUITIVE AND VERSATILE



Choose between mesh or upholstered backs

Beautifully sculpted aluminum accents

Multiple synchro controls including a passive weight balanced option

Aluminum base standard

Elegant and classic design

Smooth recline with fingertip controls



3760



3760



Shown: 3760-Z1-A47-PGG-MB-BA12S-C6

features

- Sleek contemporary and elegant design
- Choice of mesh or upholstered backs
- Beautifully sculpted aluminum arms and accents
- Smooth recline with fingertip control
- Aluminum base standard
- Warranted to 300 lbs.

QUICK SHIP: ExpressShip fabrics, M2 and M4 mesh ship as fast as 5 business days.

GSA SIN# 711-18 PENDING

acclaim

CONTEMPORARY EUROPEAN STYLING
WITH SUBTLE DETAILING



Detailed stitching and
craftsmanship

Aluminum arms with
upholstered caps

Seat slider optional

Multiple synchro controls

Chrome accented casters
standard with polished
aluminum base



Adjustable and fixed arm
options

Molded foam with
waterfall edge

Nylon base standard;
polished aluminum base
optional

Shown: 2780-W1-A27-BA12P-C7

2780



2780



2780



features

- Sleek rectilinear design with fine stitching details
- Dual density molded foam provides firm profile with plush comfortable interior
- Multiple synchro controls available including a passive weight balanced option
- Five distinctive arm options
- Aluminum arm with upholstered pad available
- Seat slider standard with Y5 synchro control
- Warranted to 300 lbs.

QUICK SHIP: ExpressShip fabrics and L3 leather ship 5 business days.

GSA SIN# 711-18

diddy

DAZZLE YOUR CONFERENCE SPACE



Detailed stitching and craftsmanship

Aluminum wraparound arms

Swivel tilt control



Shown: 2450-S3-A24-C7

2450



2450



2450 GT



features

- Collaborative, Conference & Guest
- Classic styling to impact conference and collaborative spaces
- Basic Swivel, Swivel Tilt or Rocking Tilt controls
- Chrome wraparound arms
- Polished high-profile base standard
- Warranted to 300 lbs.

QUICK SHIP: ExpressShip fabrics and L3 leather ship as fast as 5 business days.

GSA SIN# 711-18

cortina

SIMPLE, STRAIGHTFORWARD
ERGONOMICS AND FUNCTIONALITY



Choose from six arm options including polished aluminum arms

Detailed stitching and craftsmanship

Molded seat foam with waterfall edge

Polished aluminum base standard

Swivel-tilt, synchro and multifunction controls

Chrome accented casters standard

Shown: 2910-S2-A19-BA19-C7

features

- Waterfall seat promotes circulation and good health
- High resilient molded foam seat and back
- Seat slider available
- Warranted to 300 lbs.

2900



2910



2910



QUICK SHIP: ExpressShip fabrics and L3 leather ship as fast as 5 business days.

GSA SIN# 711-18

bristol

SEAMLESS INTEGRATION INTO
YOUR OFFICE'S ARCHITECTURE



Detailed stitching and
craftsmanship

Ratchet back height
adjustment for lumbar support
standard

Aluminum arms, nylon fixed
arms and multiple adjustable
arm options

Nylon base standard; polished
aluminum base optional



Molded seat foam with
waterfall edge

Chrome accented casters
standard with polished
aluminum base

Shown: 2360-S2-A10-BA9B-C6

features

- Ratchet back height adjustable lumbar standard
- Waterfall seat promotes circulation and good health
- High resilient molded foam seat and back
- Seat slider available
- Warranted to 300 lbs.

2360



2380



2366



QUICK SHIP: ExpressShip fabrics and L3 leather ship as fast as 5 business days.

GSA SIN# 711-18



Padded pillowcase surface

Detailed stitching and craftsmanship

Choose from five arm options including one with matching upholstered arm caps

Nylon base standard; polished aluminum base optional



Molded seat foam with waterfall edge

Swivel-tilt or knee-tilt controls

Shown: 2600-S1-A16-BA1B-C1

features

- Detailed craftsmanship in upholstery
- High resilient foam and one-piece shell offer style and comfort
- Padded pillowcase surface
- Swivel tilt or knee tilt models
- Loop arm with upholstered pad available
- Warranted to 300 lbs.

2600



2610



2600 GT



cayman

CONTEMPORARY, ERGONOMIC,
AND BUILT WITH ATTENTION TO DETAIL



Detailed stitching and
craftsmanship

Aluminum arms with matching
upholstered arm caps

Swivel-tilt or knee-tilt controls



Molded seat foam with
waterfall edge

Aluminum base standard in
polished or black powder
coat finishes

Shown: 2800-S1-A20-BA2B-C1

2800



2810



2800 GT



features

- Molded one-piece shell incorporates subtle but effective lumbar
- Aluminum arms with matching upholstered arm caps
- Aluminum base standard in polished or black powder coat finishes
- Swivel tilt or knee tilt available
- Warranted to 300 lbs.

QUICK SHIP: ExpressShip fabrics and L3 leather ship as fast as 5 business days.

GSA SIN# 711-18

NEW mimi HIGH DENSITY SEATING WITH HIGH DESIGN



12 Plastic Colors

Flex back motion with pelvic support

All plastic 4 leg stacks 6 high on the floor and 12 high on optional dolly

All plastic sled stacks 12 high on the floor and 40 high on optional dolly

4 leg and sled base models

Silver and black frame colors



Shown: 1050-GT-SF-AP

features

- Stacking and multipurpose
- 4-leg and sled models
- Flex back motion with pelvic support
- All plastic sled base models stack up to 40 high with optional dolly: Stack 12 on the floor
- 12 plastic colors and 2 frame colors
- Warranted to 300 lbs.

1030



1040



1051



1055





Durable polypropylene shell

Choose among 12 plastic colors

18" seat height perfect for middle school, high school and higher education

Multiple frame types in silver or black colors



Shown: 7010-GT-SF-AP

features

- Gas assist injection molding process provides smooth plastic back for improved aesthetics and cleanability
- 18" seat height perfect for middle school, high school and higher education
- 12 plastic colors

- Silver and black frame colors
- Warranted to 300 lbs.

7010



7015



7020



7025



7022



zoom

RAPID SETUP FOR A CREW OR A CROWD



Two plastic frame and mesh colors

Nesting, task and stool models

Flex movement can be locked



Nesting model has a full range of flex back motion up to 45 degrees

Plastic or upholstered seat

Nesting feature allows multiple chairs to be stored close together optimizing storage space

Shown: 1115-GT-SF-PGG-US

features

- Nesting, task and stool models
- Flex back movement with back lock feature
- Two plastic frame and mesh colors
- Plastic or upholstered seat
- Warranted to 300 lbs.

1115



1125



1126



1115





Soft touch polyurethane arms available in black or gray

Available with or without arms

Six powder coat frame colors

Wall saver legs on model 1410 prevent back from touching walls

Back available in plastic, mesh or upholstered

Molded seat foam with waterfall edge



Shown: 1410-GT-A15G-GMF-UB

features

- Back styles: all plastic, upholstered and mesh
- 6 frame colors
- Choice of black or gray arms
- Wall saver rear legs prevent back from contact with wall
- Warranted to 300 lbs.

1410



1415



1410



bella

NAME YOUR GAME, BELLA IS READY TO PLAY



Pull handle for easy mobility

Six powder coat frame colors

Wall saver frame

Choose all plastic, upholstered seat or upholstered seat and back

Available armless or choose from two arm options or tablet arm

Six powder coat frame colors



Shown: 1310-GT-A00-SF-AP-P20

features

- All-plastic, plastic back with upholstered seat or upholstered seat and back models
- 6 frame colors and 12 plastic colors
- Wall saver frame with four leg model protects wall surfaces
- Two arm options and folding tablet arm available
- Four leg models stack 10 high on optional dolly and four high on floor
- Warranted to 300 lbs.

1315



1320



1325



1326



QUICK SHIP: ExpressShip fabrics and 12 plastic colors ship as fast as 5 business days.

GSA SIN# 711-19

bella mesh

NAME YOUR GAME, BELLA IS READY TO PLAY



Breathable mesh back provides comfort and support

Six mesh colors available

Wall saver frame

Choose all plastic or upholstered seat

Available armless or choose from two arm options or tablet arm

Six powder coat frame colors



Shown: 1360-GT-A00-SF-AP

features

- Mesh back with plastic seat or mesh back with upholstered seat models
- 6 mesh and 6 frame colors
- Nesting model with flip up seat for easy storage
- Wall saver frame with four leg model protects wall surfaces
- Two arm options and folding tablet arm available
- Warranted to 300 lbs.

1365



1370



1375



1378



QUICK SHIP: ExpressShip fabrics and M1 mesh ship as fast as 5 business days.

GSA SIN# 711-19

shuttle

THE ULTIMATE UTILITY CHAIR



Soft touch polyurethane arms
in black or gray

Choose between all plastic,
upholstered seat and fully
upholstered

Six powder coat frame
colors

12 plastic colors

Wall saver frame on 1210
and 1260 models to protect
surfaces



Shown: 1210-GT-A18G-DGF-UP

features

- All plastic, upholstered seat with plastic back or fully upholstered
- 6 frame colors and 12 plastic colors
- Bariatric, stools and tablet arm models available
- Stacks 4 high on floor and 10 on optional dolly
- Wall saver on model 1210 and 1260
- Warranted to 300 lbs.

1215



1230



1210 ST



1250



shuttle mesh

THE ULTIMATE UTILITY CHAIR



Soft touch polyurethane arms
in black or gray

12 plastic colors

Wall saver frame on 1210
and 1260 models to protect
surfaces



Choose between all mesh
back with plastic seat or
mesh back with
upholstered seat

Six powder coat frame
colors

Shown: 1260-GT-A18G-DGF-US

features

- Mesh back with plastic seat and mesh back with upholstered seat models
- 6 frame colors and 12 plastic colors
- Multiple mesh colors available (M1, M2, M3)
- Stool and tablet arm models available
- Stacks 4 high on floor and 10 on optional dolly
- Wall saver on model 1210 and 1260
- Warranted to 300 lbs.

1265



1280



1260 ST



QUICK SHIP: ExpressShip fabrics and 12 plastic colors ship as fast as 5 business days.

GSA SIN# 711-19

indy

FLEX BACK MOVEMENT YIELDS SUPERIOR COMFORT



Available with or without arms

Flex back provides 15 degrees of movement

Durable wire rod frame available in chrome or black colors



12 plastic colors with matching arm pads

Available in all plastic, upholstered seat or upholstered seat and back

Stacks all plastic chairs up to 33 high or upholstered chairs up to 20 high with optional dolly

Shown: 1010-GT-CF-AP-P18

1010



1020



1020



features

- High Density, Multi-Purpose Stacker
- Flex back provides 15 degrees of movement
- Available in all plastic, with upholstered seat or with upholstered seat and back
- 12 plastic shell colors with matching arm pads
- Durable sled style frame in black or chrome colors
- Stacks up to 33 all plastic chairs high with optional dolly
- Warranted to 300 lbs.

QUICK SHIP: ExpressShip fabrics and 12 plastic colors ship as fast as 5 business days.

GSA SIN# 711-19



Pull handle for easy mobility

12 plastic colors with matching arm pads

Available with and without arms

Available in all plastic and upholstered seat options

Chrome finish

Non-marring clear glides optional



Shown: 1060-GT-CF-AP-P11

features

- High Density, Multi-Purpose Stacker
- Available in all plastic or with upholstered seat
- Counter stools available
- Durable sled style chrome frame with optional non-marring floor glides
- 12 plastic shell colors with matching arm pads
- Stacks up to 33 all plastic chairs high with optional dolly
- Warranted to 300 lbs.

1060



1070



1066



1076



NEW **lilly**

CLASSIC, SOPHISTICATED AND SUPREMELY COMFORTABLE



Ideal for collaborative, lounge and touchdown spaces

Roomy back for ultimate comfort

Multi-upholstery option available

Four base styles including 4-leg, W-leg, wood legs and swivel base



Shown: 9131 LG-BA20P

features

- Classic, sophisticated design
- Comfortable with roomy back
- Versatile with four leg options including 4-leg, W-leg, wood legs and swivel
- Metal 4-leg and W-leg with silver or black color
- Wood leg offering walnut and maple with clear finish
- Aluminum swivel base with silver powder coat or polished finish
- Warranted to 300 lbs.

9111



9101



9121



9131



QUICK SHIP: Standard lead times apply.

sophie

COMPLETE LOUNGE SEATING COLLECTION



Field replaceable parts

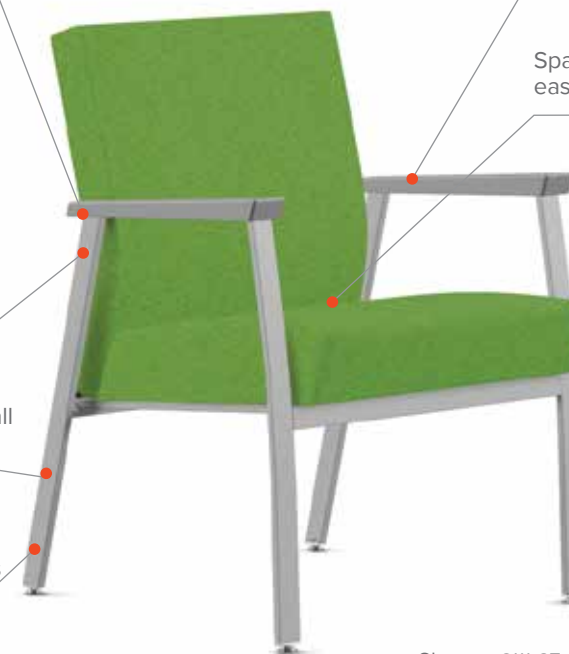
Steel frame construction offers durability and ease of cleaning

Wall saver frame protects wall surfaces

Six powder coat frame colors

Soft touch polyurethane arms in black and gray colors

Spacious clean-out area for easy cleanup



Shown: 8111-GT-A80G-SF

features

- Guest, multiple seating, bariatric, hip chair, benches and table models
- Spacious clean-out and wall saver frame
- Field replaceable parts

- 6 frame colors
- Warranted to 350 lbs for single seat, 525 lbs for double seat and 750 lbs for triple seat

8112



8123



8119



8118



8102



SHIPPING: Standard lead times apply.

GSA SIN# 711-16

sophie tables

ANCILLARY TABLE SELECTIONS TO
KEEP YOUR PLAN CONNECTED
AND GUEST FRIENDLY



Field replaceable parts

Stand alone and linking models

Six powder coat frame colors

Five laminate top and edge colors including white, black, slate gray, wallaby and platinum

Steel frame construction offers durability and ease of cleaning

Shown: 8170-TB-SF-BKL

features

- Two stand alone tables and six connecting tables available
- 5 laminate top and edge colors
- 6 powder coat leg colors
- Field replaceable parts

8190



8191



8192



8193



8195



SHIPPING: Standard lead times apply.

GSA SIN# 711-11



SIT IN STYLE, WORK IN COMFORT, GET THE VALUE



Six models available that ship in 24 hours

Exceptional value with every model



All mesh, mesh back and fully upholstered task chairs available

All models warranted to 300 lbs.

217



216



203



176



103B/S



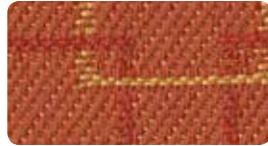
features

- Rapid ship! Ships in 24 hours
- Six models available
- No more waiting for items built-to-order with immediate in-stock items that are ready to ship
- Exceeding expectations with our most popular products without sacrificing style or reliability

- Five-year warranty on all structural and mechanical components. Mesh, fabric and foam are warranted against wear through and deterioration for five years
- All models warranted to 300 lbs.

QUICK SHIP: @nce ships in 24 hours!

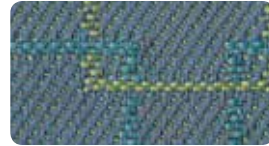
Avant



Grade A Avant Chai



Grade A Avant Denim



Grade A Avant Reef



Grade A Avant Spruce



Grade A Avant Steel



Grade A Avant Waffle

Bingo



Grade A Bingo Black



Grade A Bingo Champagne



Grade A Bingo Cherry



Grade A Bingo Gray



Grade A Bingo Green



Grade A Bingo Navy

Echo



Grade A Echo Flint



Grade A Echo Hemloch



Grade A Echo Lynx



Grade A Echo Reflection



Grade A Echo Rose



Grade A Echo Stone

9to5 Seating's ExpressShip Program

Need it fast? We have you covered with a wide variety of options in 5 days!

ExpressShip Program offers expedited delivery on our seating products, now with many options. Product will be completed and ready to ship within 5 business days.

ExpressShip Purchase Orders placed separately ship in 5 business days. If combined with other fabrics the lead time of the fabric with the longest lead time will be used.

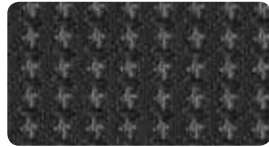


EXPRESSSHIP
FABRICS

Matrix



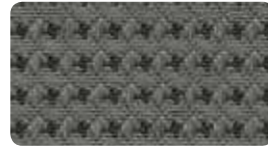
Grade A Champagne



Grade A Matrix Coal



Grade A Matrix Fern



Grade A Matrix Lead



Grade A Matrix Peacock



Grade A Matrix Plum

Mosaic



Grade A Mosaic Carmel



Grade A Mosaic Flame



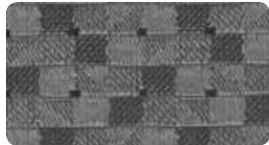
Grade A Mosaic Latte



Grade A Mosaic Nightfall



Grade A Mosaic Ocean



Grade A Mosaic Slate

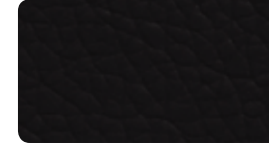
Pauly



Grade A Pauly Ash



Grade A Pauly Baltic



Grade A Pauly Black



Grade A Pauly Cafe



Grade A Pauly Caramel



Grade A Pauly Mahogany



Grade A Pauly Mist



Grade A Pauly Mushroom



Grade A Pauly Saddle



Grade A Pauly Taupe



Grade A Pauly White

Tango



Grade A Tango Bark



Grade A Tango Charcoal



Grade A Tango Honey



Grade A Tango Lake



Grade A Tango Ruby



Grade A Tango Wasabi

NEW

Vivid Fabrics



Grade A Latte



Grade A Cloud



Grade A Lemon



Grade A Apple



Grade A Tangerine



Grade A Aqua



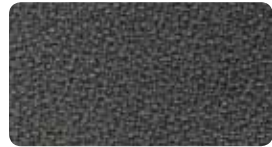
Grade A Crimson



Grade A Electric Blue



Grade A Onyx



Grade A Dove

L4 Leather



L4 Sierra Ash



L4 Sierra Baltic



L4 Sierra Cafe



L4 Sierra Carmel



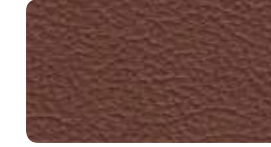
L4 Sierra Mahogany



L4 Sierra Mist



L4 Sierra Mushroom



L4 Sierra Saddle



L4 Sierra Taupe



L4 Sierra White

L4 Sierra Leather Match also available to ship in standard lead time. Full Grain Italian leathers matched with Polyurethane colors above.

L3 Leather



L3 Highlands Black

REDUCED ENVIRONMENTAL IMPACT

Pauly utilizes the latest technology for environmentally friendly, coated fabrics. It is a water-based polyurethane that is free of solvents, antimonies or other hazardous chemicals: PVC free, solvent/DMF free, formaldehyde free, phthalate free, heavy metal free and low VOC.

Use actual material samples for color matching and ordering. Colors of printed samples may vary from actual samples.

NEW Plastics



Grade P P01 Black Swan



Grade P P05 Whisper



Grade P P11 Federal



Grade P P12 Crimson



Grade P P13 Lemon



Grade P P14 Dove



Grade P P15 Cloud



Grade P P16 Lagoon



Grade P P17 Apple



Grade P P18 Tangerine

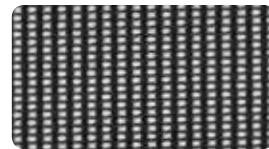


Grade P P19 Latte

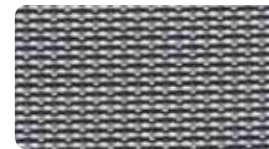


Grade P P20 Azure

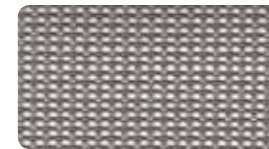
M1 Mesh



Grade M1 M11 Black



Grade M1 M12 Gray



Grade M1 M13 Silver



Grade M1 M14 Clover

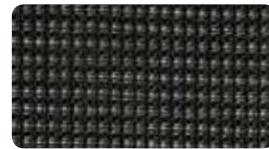


Grade M1 M15 Poppy

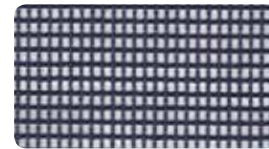


Grade M1 M16 Sky

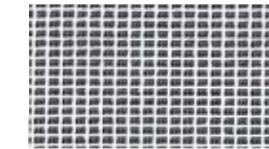
M2 Mesh



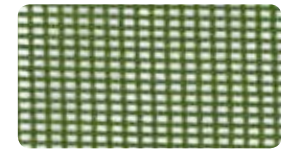
Grade M2 M21 Black



Grade M2 M22 Gray



Grade M2 M23 White



Grade M2 M24 Green



Grade M2 M25 Red



Grade M2 M26 Blue

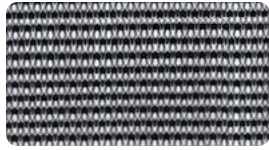


Grade M2 M27 Orange



Grade M2 M28 Aqua

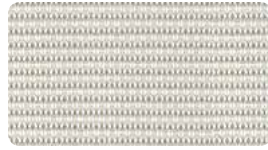
M3 Mesh



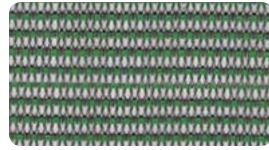
Grade M3 M31 Graphite



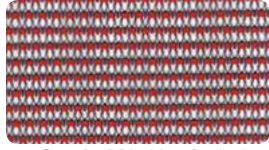
Grade M3 M32 Slate



Grade M3 M33 Snow



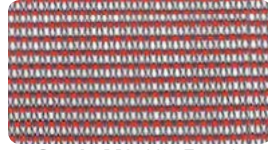
Grade M3 M34 Sage



Grade M3 M35 Cardinal



Grade M3 M36 Royal



Grade M3 M37 Tangerine



Grade M3 M38 Plum

Cosmo Striped Mesh



Cosmo MS2 Gray



Cosmo MS4 Green



Cosmo MS5 Red



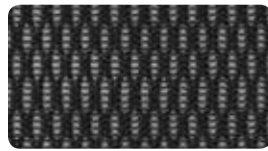
Cosmo MS6 Blue

Air Grid Mesh



Grade T01 AG Black

Mesh MO



Grade MO Black

NEW M4 Mesh



Grade M4 M40 Latte



Grade M4 M41 Cloud



Grade M4 M42 Lemon



Grade M4 M43 Apple



Grade M4 M44 Tangerine



Grade M4 M45 Aqua



Grade M4 M46 Crimson



Grade M4 M47 Electric Blue



Grade M4 M48 Onyx



Grade M4 M49 Dove

major reshoring effort

Made in America

In a major reshoring effort to bring manufacturing jobs back to the United States, 9to5 Seating recently opened its third manufacturing facility in Union City, Tennessee. The facility is known as Made in America Seating, sister company to 9to5 Seating.

The experience and the hard work ethic of the American workforce, that make up Made in America Seating facility, bring the products closer to their point-of-use in the United States and surpass competitors' products from overseas.

Companies today demand the most for their money and 9to5 Seating is prepared to deliver the highest quality product without sacrificing selection or speed of delivery.

D3 Family of Brands



UNION CITY, TENNESSEE

Manufacturing, Exporting,
Building and Assembling Plant





thinking and acting green

9to5 Seating is committed to sustainable and environmentally responsible business practices. This global perspective is endorsed and executed throughout every aspect of our corporate culture, and within our warehousing, manufacturing and office facilities.

9to5 Seating is fully aware of the dire consequences of irresponsible manufacturing processes and mistreatment of the earth's resources. 9to5 Seating is a member of the U.S. Environmental Protection Agency's WasteWise Program established to eliminate costly municipal solid waste and select industrial wastes, benefiting the environment.

We are proud to demonstrate our commitment by offering GREENGUARD GOLD Certified products, participating in the U.S. Environmental Protection Agency's Waste Wise Program, achieving LEED® NC Gold Certification for our corporate headquarters facility and achieving level®, BIFMA's sustainability certification program for furniture.

9to5 Seating products:

- Contribute to healthier interior environments
- Level 1 certified
- Add points for LEED Certification
- Manufactured using plastic, nylon, steel, aluminum and polypropylene components that are 100% recyclable
- Use supplies that share an earth-friendly philosophy
- Certified below chemical emissions limits for TVOC, Formaldehyde, Total Aldehydes, Individual VOCs, 4-phenylcyclohexene

Environmental Data Sheets for all 9to5 Seating products can be found at our website www.9to5seating.com.



vertically integrated

CAD DESIGN

CNC MOLD & DIE FABRICATION

PLASTIC INJECTION MOLDING

FOAM INJECTION MOLDING

METAL BENDING AND WELDING

ADVANCED ROBOTIC MANUFACTURING

ALUMINUM DIE CASTING & POLISHING

POWDER COAT FINISHING

TESTING LABORATORY





looking forward

While 9to5 Seating has many years of experience in the manufacturing of office seating, we truly differentiate ourselves from our competitors through our vertical integration, with wholly owned manufacturing facilities in both the United States and Asia.

It is through this combination of vertical integration, with both domestic and foreign manufacturing, that we can offer the customer the product options and wide selection of upholstery at prices that rival foreign manufactured products.

Most of our competitors buy various parts from suppliers overseas. Since they do not own the factories supplying these components, they can neither control the consistency of the raw materials going into the product nor can they control the environment in which the part is manufactured.

At our factories, we ensure the quality of our materials by purchasing premium raw materials from world renowned suppliers such as BASF. Additionally, our factory operates at the highest environmental standards to ensure both the well-being of our employees and the planet.

Companies today and in the future, demand the most for their money without sacrificing quality, selection, and speed of delivery. 9to5 Seating is prepared to deliver.

lifetime warranty

9to5 Seating products are manufactured with meticulous attention to detail to achieve a level of quality that is free from defects in material and workmanship. In an effort to stand behind this philosophy, 9to5 Seating warrants to the original user of the product and from the original date of purchase, the following:

With the exception of products noted below Lifetime Warranty to the original end user, the company will repair or replace, at its option, without charge to the original purchaser only, factory defective structural and mechanical parts. This warranty is for single shift, standard commercial usage, defined as a standard 8 hour work day, five days a week. Weight limitations vary by product.

Upholstery fabric and foam is warranted against wear through and deterioration during normal usage for a period of five (5) years. However, the company does not warrant leather against routine scratching and scuffing, as all leather is subject to minor blemishes during use. COM and COL are not warranted. Due to natural variations in material, furniture containing leather is sold subject to normal variations and/or irregularities of color, texture, and grain. For Aria High Back HD, Logic HD, Logic Plus, Enduro, Theory HD and Strata HD chairs, please contact customer service.

Should parts fail for any model during normal use within the applicable warranty period, please provide 9to5 Seating with a description of the failure and proof of purchase (Sales Order number located on the bottom of the chair) and if necessary you may need to return the defective part, freight prepaid to 9to5 Seating for inspection, repair and/or replacement, together with a copy of original sales receipt. Labor and installation service is not covered under warranty. Please do not send parts without prior authorization.

Send parts to: 9to5 Seating - Warranty Department, 3211 Jack Northrop Avenue, Hawthorne, CA 90250

9to5 Seating will inspect the part in question, repair or replace at its option any defective part at no charge and return to the original purchaser.

This warranty does not apply to product or parts of product that have been subjected to misuse or abuse, accident, alteration, unauthorized repair or which have been damaged in transit. You agree to indemnify and hold harmless 9to5 Seating, its officers, directors, shareholders, employees, and agents from any actions, claims, demands, damages, liabilities, costs, and strict liability in tort or contract, or any other legal theory arising out of the misuse or abuse, alteration, or damage in transit of the product.

LIMITATION OF LIABILITY

Under no circumstance, including but not limited to breach of contract, breach of warranty or negligence, shall 9to5 Seating be liable for lost profits, loss of goodwill, stored data, general, special, consequential or exemplary damages, even if 9to5 Seating had notice of these damages or they were foreseeable. 9to5 Seating shall not be responsible for verifying dealer's or customer's description of needs, data, or the fitness for a particular purpose of goods. 9to5 Seating's Liability in all cases shall be limited to repair or replacement of the defective parts, or the purchase price of the product. Damages resulting from misuse, abuse, alteration, negligence, or accidents are not covered under this warranty.

9to5 Seating makes no warranty that any of its products are suitable for any particular purpose and makes no other warranties, express or implied, other than those set out here. As codes and standards vary from one jurisdiction to another, references to compliance are solely for convenience and without any representation as to accuracy or suitability. Users must verify the suitability of such information or product for their specific application. In no event shall 9to5 Seating be liable in either tort or contract for any loss or direct, special, incidental, consequential, or exemplary, damages.

ANSI/BIFMA

The Business and Institutional Furniture Manufacturer's Association (BIFMA) has developed tests which have been approved by the American National Standards Institute (ANSI) for determining the strength and durability of seating in its everyday use. This statement does not serve as a warranty or guarantee, however 9to5 Seating products found within this price list generally meet or exceed applicable BIFMA and ANSI standards.

For complete text of warranty, please call 9to5 Seating at: 310.220.2500 EXCEPT AS OTHERWISE PROVIDED, 9to5 Seating MAKES NO OTHER WARRANTIES, EXPRESS OR IMPLIED, INCLUDING BUT NOT LIMITED TO THE WARRANTIES OF MERCHANTABILITY AND FITNESS FOR A PARTICULAR PURPOSE.