



# Gideon Steel Panel Company, LLC

24 gauge PVDF

*When Quality and Performance Matter!*

## Environmentally Smart Colors - Designed Energy Efficient



TERRA COTTA



AGED COPPER



SOLAR WHITE



SANDSTONE



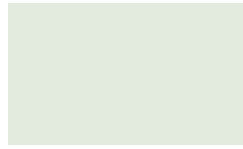
SURREY BEIGE



COLONIAL RED



PATINA GREEN



REGAL WHITE



ASH GRAY



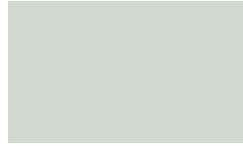
SIERRA TAN



REGAL RED\*



HEMLOCK GREEN\*



STONE WHITE



DOVE GRAY



MEDIUM BRONZE



BURGUNDY\*



HARTFORD GREEN\*



SLATE BLUE



SLATE GRAY



MANSARD BROWN



MATTE BLACK



EVERGREEN



REGAL BLUE\*



CHARCOAL GRAY



DARK BRONZE

## Metallic Colors



SILVER\*



COPPER\*



CHAMPAGNE\*



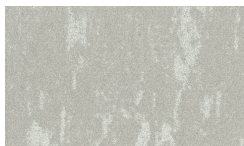
PRE-WEATHERED GALVALUME\*\*



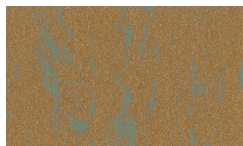
ACRYLIC COATED GALVALUME®

## Non-Painted

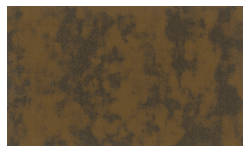
## Weathered Metal Colors



GALV-TEN™ RAW\*



COPPER-TEN™ RAW\*



COR-TEN AZP® RAW\*



VINTAGE

\*Also available in Robust.

\*Available at a slight price premium. Colors shown are matched as accurately as possible, but may vary slightly from finished product. Coating warranty varies for Regal Red, Matte Black, Copper, Silver, Champagne, and Pre-Weathered Galvalume. Metallics are warranted for chip, crack, and peel only. Vintage carries a 20-yr Finish Warranty. Please contact your representative for more information.

COOL Color	Energy Star Compliant	LEED 2013 Compliant	ISR	EMI	3-yr SR	SRI
Aged Copper	YES	YES	0.47	0.85	0.46	53
Ash Gray	YES	YES	0.39	0.84	0.39	41
Burgundy	YES	-	0.25	0.85	0.23	23
Champagne Metallic	YES	-	0.37	0.80	0.35	37
Charcoal Gray	YES	-	0.29	0.84	0.28	28
Colonial Red	YES	-	0.30	0.85	0.29	30
Copper Metallic	YES	YES	0.49	0.86	0.47	56
Dark Bronze	YES	-	0.26	0.84	0.25	24
Dove Gray	YES	YES	0.49	0.86	N/A	56
Evergreen	YES	-	0.27	0.86	0.26	26
Hartford Green	YES	-	0.26	0.85	0.25	24
Hemlock Green	YES	-	0.29	0.86	0.29	29
Mansard Brown	YES	-	0.27	0.86	0.25	26
Matte Black	YES	-	0.29	0.83	0.27	27
Medium Bronze	YES	-	0.30	0.87	0.28	31
Patina Green	YES	-	0.28	0.87	0.28	28
Pre-weathered Galvalume	YES	-	0.30	0.79	0.28	27
Regal Blue	YES	-	0.26	0.85	0.25	24
Regal Red	YES	-	0.42	0.83	0.41	45
Regal White	YES	-	0.67	0.86	0.67	81
Sandstone	YES	YES	0.54	0.86	0.53	63
Sierra Tan	YES	-	0.35	0.86	0.34	37
Silver Metallic	YES	YES	0.59	0.79	0.60	67
Slate Blue	YES	-	0.29	0.85	0.28	28
Slate Gray	YES	-	0.33	0.84	0.33	33
Solar White	YES	YES	0.68	0.85	0.66	82
Stone White	YES	-	0.60	0.86	0.56	71
Surrey Beige	YES	YES	0.42	0.85	0.41	46
Terra Cotta	YES	-	0.35	0.86	0.35	37
Acrylic Coated Galvalume	YES	YES	0.67	0.14	0.55	56
Cor-Ten AZP® Raw	-	-	0.32	0.89	N/A	34
Copper-Ten™ Raw	-	-	0.45	0.88	N/A	51
Galv-Ten™ Raw	-	-	0.49	0.84	N/A	55
Vintage®	-	-	0.49	0.84	N/A	55



(405) 942-7878 • [www.gideonsteel.com](http://www.gideonsteel.com)  
**When Quality and Performance Matter!™**

**Concealed Fastener Panels  
 Standing Seam (SSR)  
 Architectural Metal Roofing**

<b>Snap Lock</b>	<b>Mechanical Seam</b>
1"	1-1/2"
1-1/2"	2"
1-3/4"	

**Flush Wall Panel (FWP)**  
 1"

**Radius - Curved Panels and Trim**  
 1-1/2" Mechanical Seam

**On site manufacturing available.**

**Fluropon is a 70% PVDF Coating System  
 Metal Roofing has never been COOLER !**



- Solar Reflectivity (SR) values are numbered 0.0 to 1.0. A value of zero indicates that the surface absorbs all solar energy and a value of 1.0 indicates total reflectance.
- Solar Reflectance Index (SRI) is used to determine compliance with LEED requirements and is calculated according to ASTM E 1980 using values for reflectance and emissivity.
- Sherwin-Williams® Fluropon® is a two-coat, 70% PVDF coating system with a .20 mil primer and a .70 - .90 mil topcoat. The reverse side has a .20 mil primer and a .30 - .40 mil backer coating.
- For low slope roofing to meet Energy Star requirements the ISR must be ≥ 0.65. After 3 years, the Solar Reflectance must be ≥ 0.50.
- For steep slope roofing to meet Energy Star requirements the ISR must be ≥ 0.25. After 3 years, the Solar Reflectance must be ≥ 0.15.
- To meet LEED 2013 requirements: low slope roofing SRI must be ≥ 78; steep slope roofing SRI for 100% of the roof must be ≥ 29.
- Low slope is defined as ≤ 2:12. Steep slope is defined as > 2:12.
- Galvalume® is a registered trademark of BIEC.
- Fluropon® is a registered trademark of The Sherwin-Williams® Company.
- Cor-Ten AZP®, Weathered Metal Series™, Galv-Ten™, and Copper-Ten™ are registered trademarks of United States Steel Corporation.
- Oil canning is an aesthetic issue and is an inherent part of light gauge cold formed metal products. By designing for thermal movement, following stringent specifications for installation and proper handling, most oil canning can be eliminated. Oil canning is not grounds for coil/panel rejection.