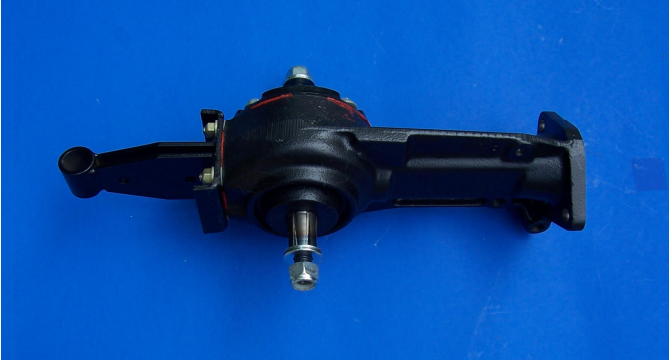


Instructions & Info

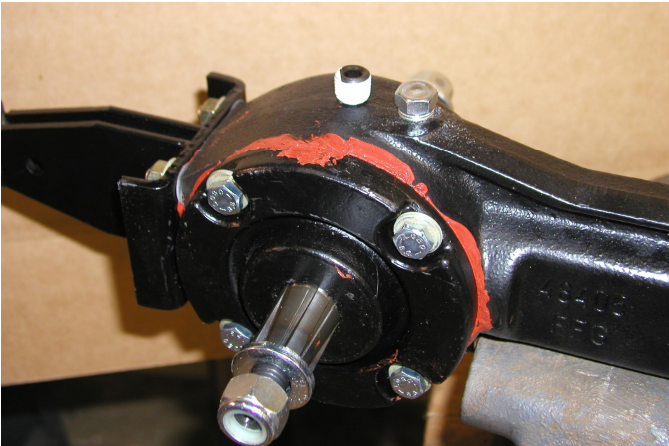
*Stock Tiller Gearbox*



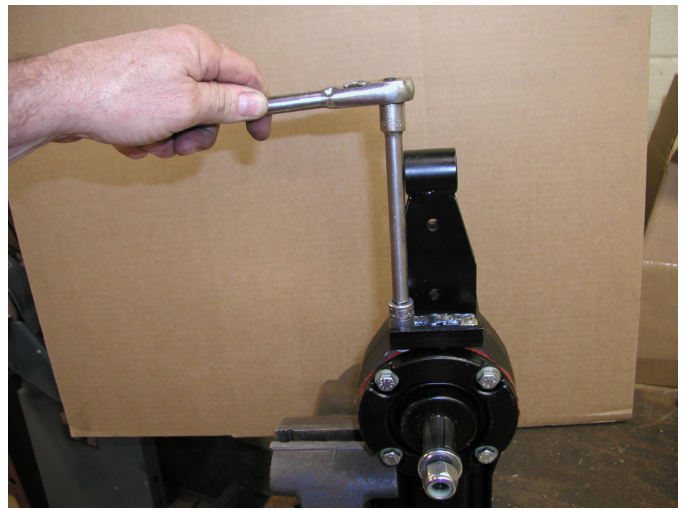
*With Rear Mount & Blade Flange Installed*



*Instructions: Stock to Trencher Conversion*



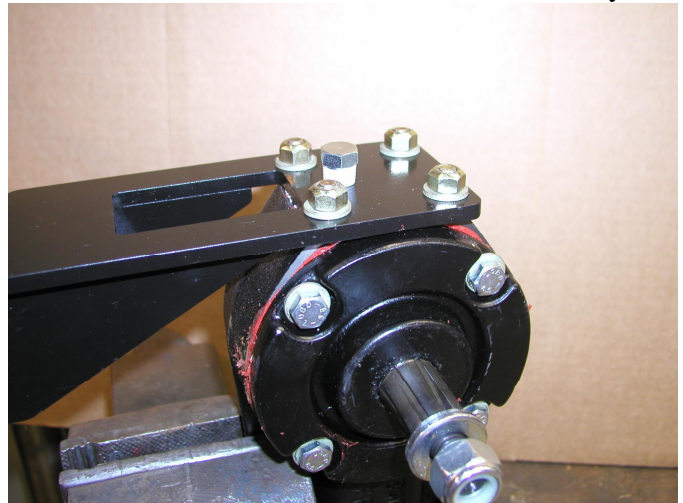
**Tools needed: 14mm wrench and 1/4" Hex Key.**  
**[Note: Gearbox contains SAE 80/90 or SAE 90 EP (extreme pressure) gear oil]. Do not spill or allow contamination.** Secure gearbox in vice with oil drain plug facing up. Using 14mm wrench remove stock oil drain plug and insert threaded pipe plug (use pipe sealant), tighten with 1/4" hex key. Save stock oil plug for rear mount. **Note: Newer gearboxes are sealed so this step can be skipped.**



**Tools needed: 13mm socket or wrench**  
 Stand gearbox up on end, securing in vice with new oil pipe plug facing away from vice. Using 13mm socket or wrench, remove the 4 nuts holding the stock rear cover in place. Remove cover carefully so as not to damage the gasket.



Reuse gasket and use gasket sealer to assure correct seal. Gearboxes are sealed now from the factory.



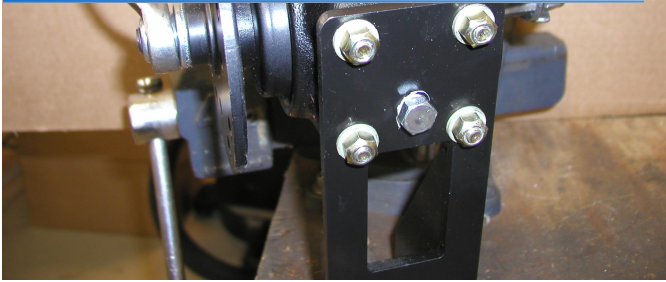
**Tools needed: 13mm & 14mm wrenches.**  
 Attach rear mount as shown, use previously removed 4 nuts and tighten with 13mm wrench. Insert the stock oil drain plug in the middle hole (use pipe sealant); tighten nuts with 14mm wrench.





Your complimentary use period has ended.  
Thank you for using PDF Complete.

[Click Here to upgrade to Unlimited Pages and Expanded Features](#)



**Tools needed: Two 22mm" wrenches.**  
Place in vice as shown (oil plug facing up). Remove locknut and washer from tine shaft mount blade flange as shown and secure with washer and locknut. Use one wrench on opposite side to keep shaft from moving while you tighten blade flange side with other wrench.



Apply automotive bearing grease to PTO coupler on gearbox, also PTO shaft located at back of transmission (blue housing) and flange mating surface.

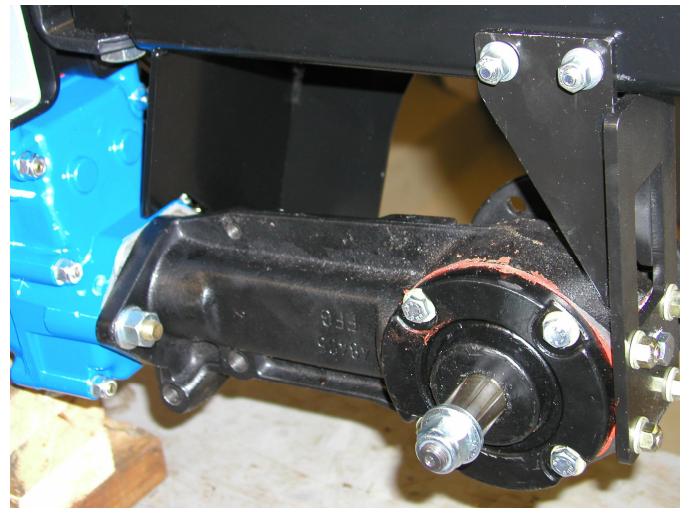
**Note: Gearbox instructions are set up for counter rotation, reverse drive.**

**Wes/Tech Resources, Inc.**

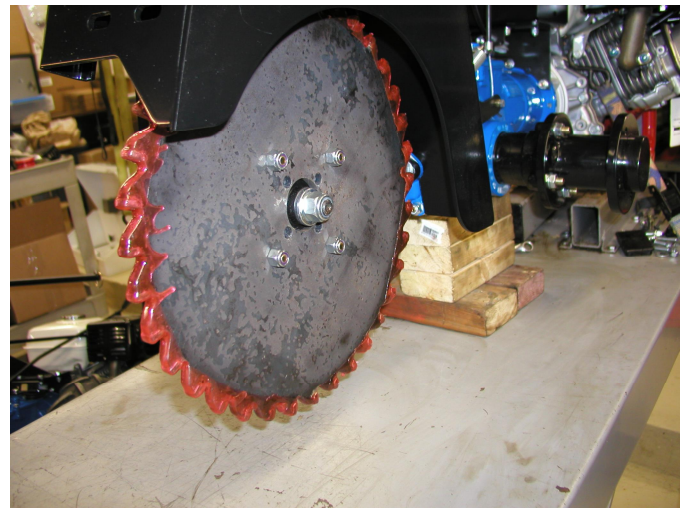
163 County Road 27 / Prattville, AL 36067  
(334) 730-1921 / (866) 970-6649 toll free

[www.westechresources.com](http://www.westechresources.com) [wes\\_tech@charter.net](mailto:wes_tech@charter.net)

**Visit our website to view additional instructions for BCS, Honda® and Wes/Tech parts. Email orders anytime!**



**Tools needed: Two 1/2" and One 19mm wrenches.**  
Align rear mount with holes on left outside edge of blade guard while sliding gearbox onto studs at back of transmission. Secure gearbox to transmission with existing nuts, tighten with 19mm wrench. Secure rear mount to blade guard with existing nuts, bolts and washers tighten using two 1/2" wrenches.



**Tools needed: Two 9/16" wrenches.**  
Mount blade on blade flange using existing nuts and bolts. Note orientation of blade  $\phi$  shown as [set up for counter rotation, reverse drive].

**Part Numbers**

Tiller Gearbox	592.90859
Blade Flange	590.48435
Gasket	580.49859
Pipe Plug	4638K512
Rear Mount	HT530

[Wes/Tech 1<sup>st</sup> Generation Trencher  $\phi$  stationary handlebars (no side to side movement)].

Rear Mount	HT444
------------	-------