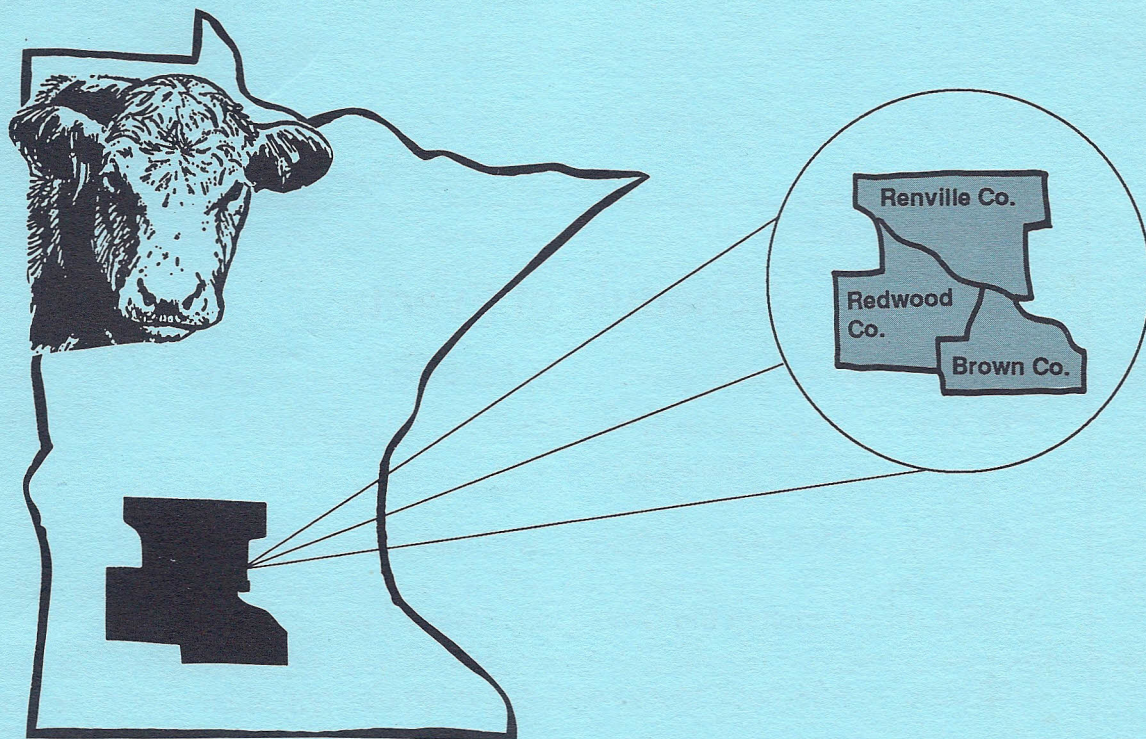


1992
Minnesota
Cattlemen's Tour

Tuesday, July 14, 1992

Sponsored By...
REDWOOD CATTLEMEN'S ASSOCIATION





1992 Minnesota State Beef Queen Val Luhman

Val is the daughter of Nick and Marilyn Luhman from Goodhue. Her home association, The Dairyland Beef Producers, includes the counties of Goodhue, Olmstead and Dodge. Val recently completed her sophomore year at the University of Minnesota-St. Paul, with a major in Agricultural Education, she hopes to pursue a career in teaching and/or Ag business.

Since being crowned last December, Val's reign as 1992 Minnesota Beef Queen has included activities such as the Upper Midwest Restaurant and Hospitality Show, meeting with Minnesota Commissioner of Agriculture Elton Redalen and Lieutenant Governor Drystad. She has and will continue to distribute the good word and facts about beef through her column in the *Minnesota Cattlemen* magazine. Val is looking forward to visiting with many of you here at the summer tour.

1992 Redwood Cattlemen's Beef Queen Jennifer Christensen

Jennifer is the daughter of Paul and Bonnie Christensen of rural Wabasso. She has participated in sports, music and FFA in high school and is currently studying to be a registered nurse at South Dakota State University. She has always lived on a farm and plans to do so again after she graduates from college. She enjoys working with animals and most aspects of farming.

Jennifer has learned quite a bit about the beef industry throughout her reign this year. She hopes to continue to help create a positive image about beef to the public and is looking forward to raising cattle someday herself.



The Youngerberg Family

ANGUS • The Business Breed

The Youngerberg family welcomes you to visit their farming operation. The farm has been in the family for over a century, and consists of a 150 cow/calf operation with 600 acres of tillable land. A high-tensile electric fencing system controls most of the pasture area.

Youngerberg's have been in the purebred Angus business since 1971. Their bulls have consistently topped the MBCIA test stations, not only in performance but have also brought top dollar at the sales. Their purebred females have been top sellers each and every year at state angus sales. The cattle have been shown at county, state and national shows, and have been near or at the top in all levels of competition. AI sires have been used from the top herds of the country, and approximately 80% of the calves are the result of artificial insemination. All the Angus cattle are enrolled in the AHIR program. A small group of approximately 20 select Charolais cows have been added to the operation within the past 3 years.

Thank you - and we hope to see you July 14th. We are located 3 1/2 miles south of Springfield on County Road #5.

PARKER LIVESTOCK SUPPLY

a division of LEXTRON, INC.

The Midwest's Most COMPLETE Animal Health Supplier

**WHEN PRICE AND SERVICE ARE IMPORTANT YOU HAVE FOUND YOUR SUPPLIER.
OUR PRICES BEAT THE FLEET STORES AND THE CATALOGUES.
WE HAVE HARD TO FIND ITEMS**

Jim Stoos • Sales Representative

Res. (612) 898-2096
17965 C Jubilee Way
Lakeville, MN 55044

223 West Main
Manchester, IA 52057
(319) 927-6068

GO WITH ONE OF THE LARGEST ANIMAL HEALTH SUPPLIERS IN THE NATION

Call Toll Free... 1-800-228-1167

I am looking forward to seeing you at the State Cattlemen's Summer Tour



David Milbrath
Account Executive

Springfield & Morgan

507-723-5500
or
800-772-8809

**INVESTMENT
CENTER**
FARMERS & MERCHANTS BANK

WABASSO IMPLEMENT INC.

Wabasso, MN 56293

507-342-5171

WATTS: 1-800-658-2322



**LEADERSHIP
AT WORK®**

Hesston • Alloway • Demco • Bush Hog • Loftness
Ag Chem • Westendorf • DMI • Grasshopper • Meyers
Ariens • Killbros • Cub Cadet



Miller Sellner Implement, Inc.

Hwy. 4 South • P.O. Box 409 • Sleepy Eye, MN 56085
Bus: (507) 794-2131 • Fax: (507) 794-3056

1993

Summer Tour Hosts

**Houston County
Cattlemen**



REVIER FEEDLOTS

Custom Cattle Feeding
Pen Size ... 80-300 Head
5,000 Capacity
Modern Working Facility

GENE REVIER
612-523-1359

JEFF REVIER
612-523-2188

Rural Route 1 ~ Box 92 ~ Olivia, Minnesota

VISITORS WELCOME!



GEIS FARMS

Buffalo ... Calves, Breeding, Meat

From a cover story about buffalo in a Ranger Rick magazine to the rolling hills of Sanborn, Minnesota, the dream became a reality. One mile southwest of Sanborn, David Geis has created prime roaming ground for his herd of 65 buffalo. In addition to the ten buffalo calves born this past month, David expects a total of 25 calves in 1992. Buffalo are hearty, wholesome animals, and remain a majestic symbol of America's heritage. David's herd wanders a fenced-in-area, including: steep hills, a creek, and a plethora of trees. During the summer months, the prairie naturally feeds the herd the grass they love. On the same acres, the buffalo hardily survive the frigid winter months. No longer subjected to the hunts of yesteryear, only 100,000 buffalo still roam the United States.

Although docile in appearance and graceful by nature, buffalo are large, dangerous and not tame. Calves weigh a mere 40 pounds and birthing complications rarely occur. The new born buffalo begin to breed when about two years old. Since buffalo gestation lasts about 9 months, buffalo are able to give birth when three years old. After the age of two, buffalo breed each year of their lives, are fully mature by the age of eight, and live for 30 to 40 years.

Because buffalo are able to run faster than a quarter-horse (the horse bred to run the fastest quarter mile), people should keep a good distance between themselves and the herd. Buffalo are also able to jump great heights and distances both from a standstill and while moving. Since the herd is typically conjugated while at rest, grazing, or in full stampede. David has designed and built a large holding and sorting corral. Without the use of the corral, veterinary evaluations and other procedures would be impossible. When humans approach the buffalo, the entire herd typically flees to another location.

Compared to beef, buffalo have 30% more protein, 50% less cholesterol, and 33% less fat, according to the USDA Composition of Food Handbook. About the same age cattle are taken to be slaughtered, buffalo are nearing their maturity, will remain productive, and continue to breed for about 30 more years. While the costs to maintain buffalo remain minimal, the benefits are plentiful. In an increasingly health conscience society, buffalo raising is becoming a popular and profitable venture.

We Have Millions to Lend.

American Banks has long had a commitment to the success of our local communities and its farmers. We would like to talk to you. Stop in or call Mark Greenway at our Lamberton office at 752-7331 to discuss your financial needs.



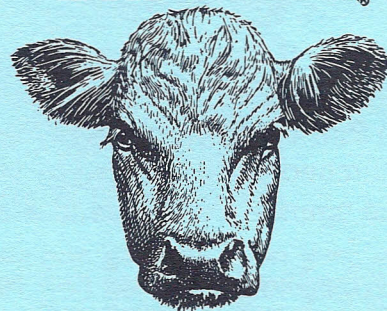
AMERICAN BANKS

120 South Main Street • P.O. Box 128
Lamberton, MN 56152
(507) 752-7331

Member FDIC

Equal Opportunity Lender

LAND O LAKES®



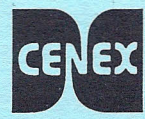
A Steak in the Future

Ask your local Cooperative about our
NEW
Beef Ration Balancer.

See us for your Complete Beef Liquid
or Dry Feed needs.

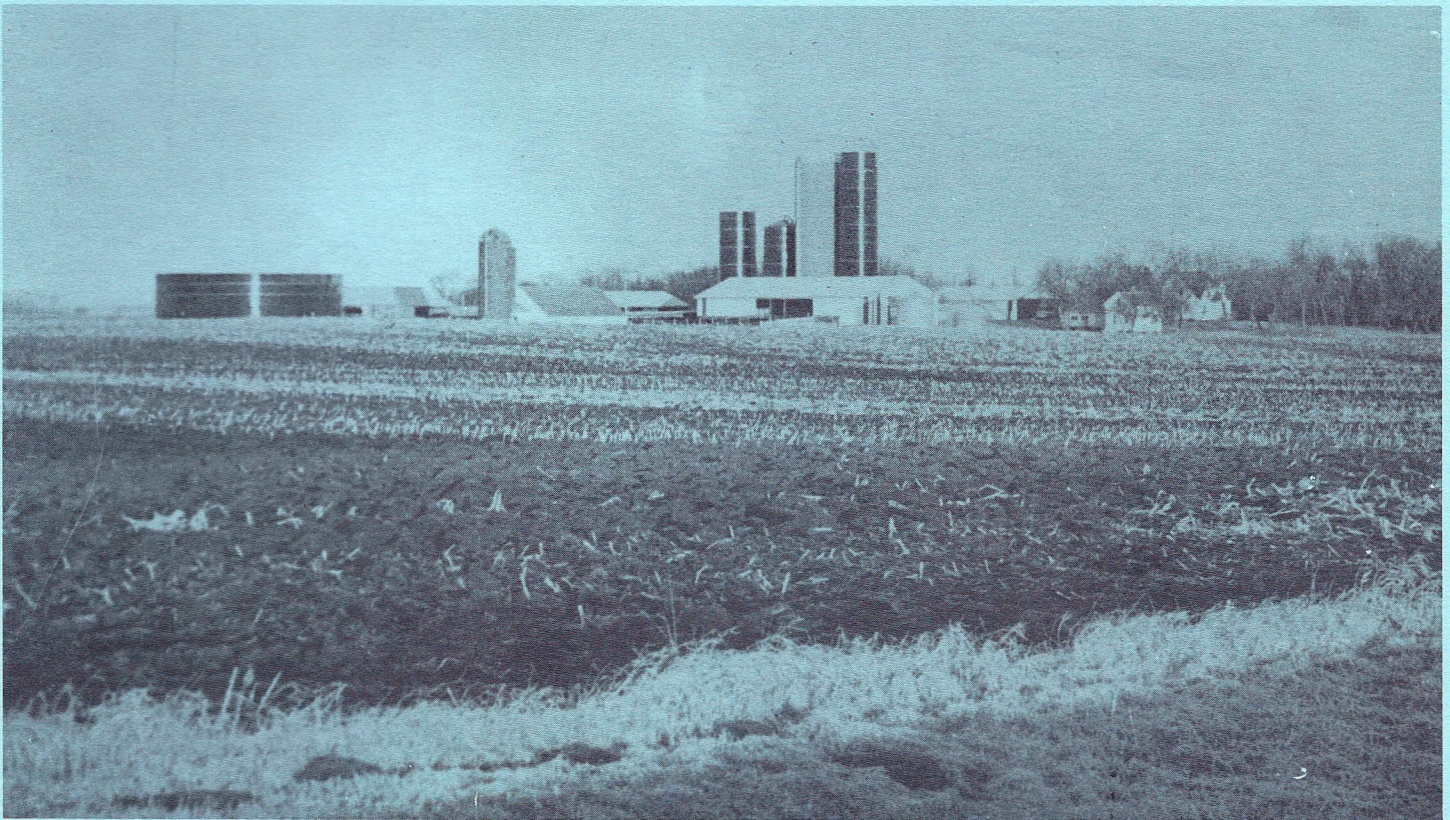


CENEX
LAND O LAKES



JIM LINDEMAN FARM

Springfield, Minnesota



Jim and Carlotta Lindeman farm 6 miles northwest of Springfield. They are the parents of four children; Joy (Mrs. Todd Wells of Lakeville, MN), Paul (killed in a motorcycle accident in 1987), Cory (a senior at Mankato State University) and Peter, a 6th grader. Their farm has been in the family for over 100 years. Julius Kirsten, homesteaded the farm in 1885. Julius lived in a log house on this place and was killed by a bull in a pasture just southeast of the present home while he was walking across the pasture to his grandsons farm, Albert, across the road. A son, Willie, age 13 was also killed by a young horse on this farm. Carl and Ruth Kirsten were married in 1940 and built the present home. Jim Lindeman married the eldest of Carl's five daughters, Carlotta, in 1962 and came farming in 1966 after working several years for Purina in Clement's and Redwood Falls.

Jim feeds out 600+ cattle a year, buying feeder steers and heifers. Jim raises corn and alfalfa which is fed to the cattle and soybeans. He farms 600 acres.

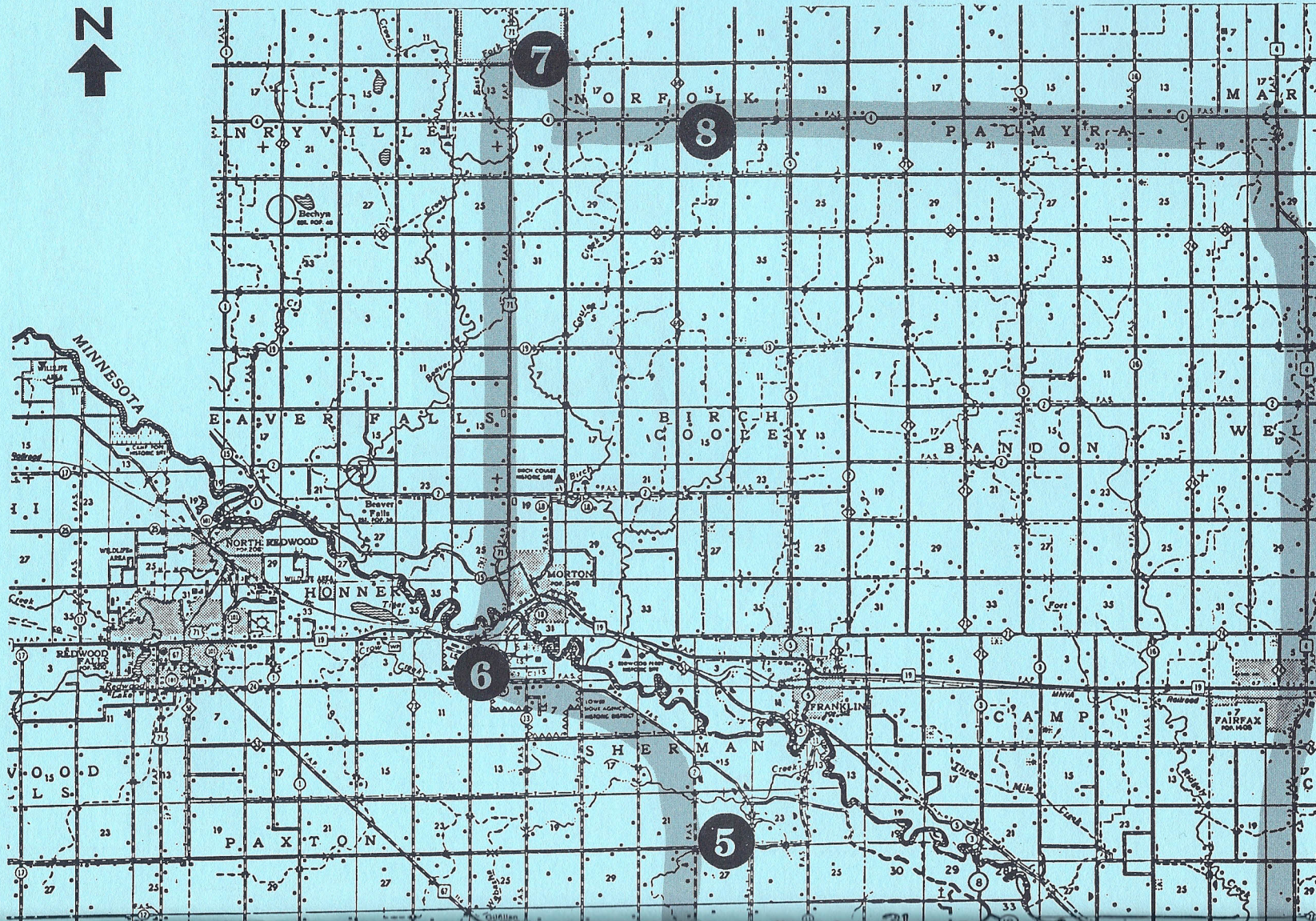
High moisture corn and haylage from Harvestore structures is fed to cattle, plus protein supplement. The feed company trucks the cattle and balances the rations. Manure is collected in a large Slurrystore and hauled out in the fall as fertilizer, building up the ground nutrients.

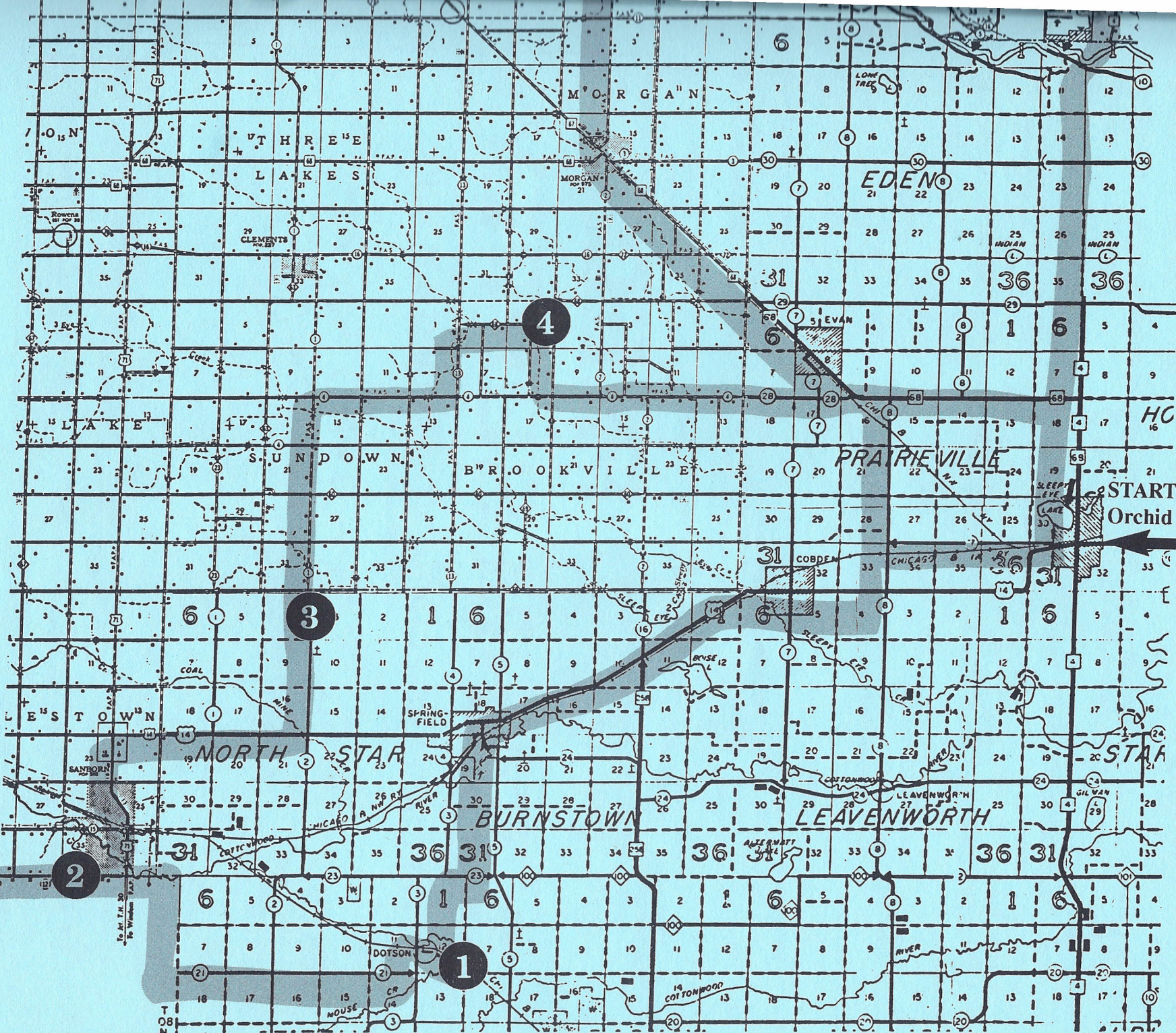
When Jim was younger he showed cattle in 4-H. He came farming on his father-in-laws farm in 1966. Carl Kirsten had set up the feeding set up and Jim added on in 1980 so more could be fed out. Jim enjoys feeding cattle, keeping records and improving production records. These are ups and downs in the cattle business. Times we come home and cattle are out, the whole family gets involved and "grows" (?) through these experiences, creating memories. Its important to work together as a family and then to play together. Lindeman's enjoy camping, boating, worshipping together and traveling together as a family (Grandma too). Jim enjoys photography, biking, sports and dancing.

KLGR held May Beef Month at the Lindeman's May 1991.

- 1...Dennis Youngerberg - Angus (Springfield)
- 2...David Geis - Buffalo Herd (Sanborn)
- 3...Jim Lindeman Farm (Springfield)
- 4...Roger Gilland Feedlot (Morgan)

- 5...Richard and Agnes Wildt - Alpacas (Morgan)
- 6...Jackpot Junction Casino
- 7...Revier Feedlot (Olivia)
- 8...Schiebel Feedlot (Olivia)





START
Orchid Inn of Sleepy Eye

4

3

2

1

GILLAND FEEDLOT

We would like to welcome you to Gilland Feedlot, owned by Roger and Faye Gilland. Our feedlot is located 5 miles southwest of Morgan. Our children, Robert, Daniel, and Maria, are the fourth generation to live on this farm.

Roger is currently president of the Minnesota State Cattlemen's Association. Faye is membership chairperson of the Minnesota Cattlewomen's Association.

The feedlot has a capacity of 1,400 head. We feed a mixture of customer owned and self owned cattle. We use conventional lots, a slatted barn, and a manure scrape barn. Currently, one of our main ration ingredients is wet corn gluten feed, a byproduct of the corn processing industry. We have used computers since 1979 to handle the record keeping that is necessary to aid in management decisions.

R & W FEED & FARM SUPPLY

FEEDS-SEEDS-EQUIPMENT-GRINDING & MIXING

120 South Connell • P.O. Box 7

Springfield, Minnesota 56087

Ph.: (507) 723-5560



RICH-NES ALPACAS



Richard and Agnes Wildt have had Alpacas since 1985. They became interested in Alpacas while visiting with a good friend over a cup of coffee. They purchased 7 Alpacas in a partnership. In 1987 they broke up the partnership, selling most of the Alpacas to Canada. They purchased one pair and have been building their herd ever since. At present they have 39 Alpacas with 10 more Crias due in 1992.

They belong to the Alpaca Owners and Breeders Association (AOBA) which is a national organization. Richard is currently serving on the Board of Directors of AOBA. They belong to the International Llama Association (ILA) also.

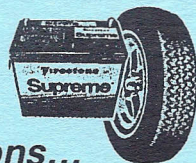
They are presently removing their hog buildings at the home place, to build an Alpaca barn. This will be much more convenient and give them more time to work with the animals. Each Alpaca is halter trained at a young age.

They thoroughly enjoy working with the Alpacas, for each animal has its own personality.

REVIER TIRE CENTERS *Auto • Truck • Farm*

Tires-Batteries-Brakes
Shock Absorbers-C.V. Joints-Mufflers

COMPLETE INVENTORY & SERVICE



Now Three Locations...

Hwy. 212 West
Olivia, MN
Ph: (612) 523-1802

Skylark Mall
Willmar, MN
Ph: (612) 235-7030

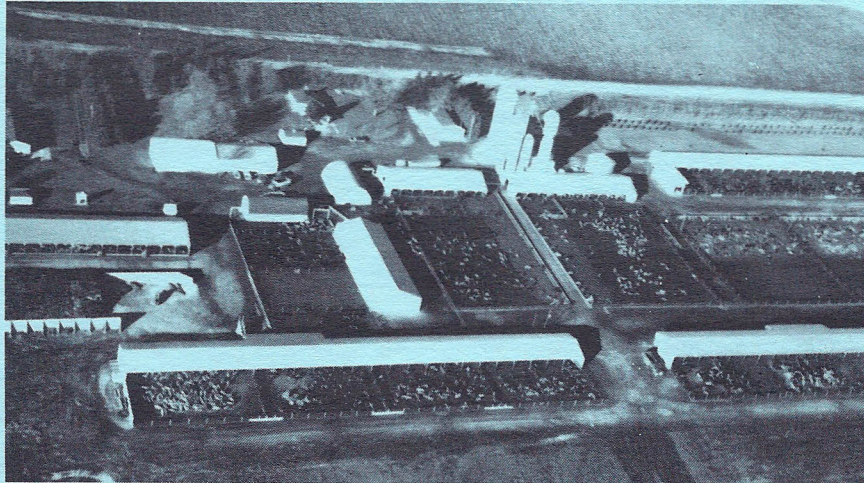
Hwy. 19 & 71 East
Redwood Falls, MN
Ph: (507) 637-3578

ICI Seeds

Growing together.



REVIER FEEDLOTS



Revier Feedlots is a 5,000 head capacity custom feedlot owned and operated by Gene Revier and his son, Jeff. Gene bought the farm in 1954 and has fed cattle ever since, starting in 1976 with custom feeding. Both yearlings and calves are fed. The cattle are weighed both in and out on their scale and worked in the new vaccinating facility. They have a feed nutritionist and a consulting veterinarian available when needed.

Growing Keltgen is growing excitement

- Question #1** What continues to be the fastest growing seed company in Minnesota?
Question #2 Which seed firm introduced 14 new hybrids for 1992?
Question #3 Which seed firm had a 105-day hybrid produce 274.5 bu/A?
Question #4 Which seed firm REALLY wants to be part of your farming program?
Question #5 Which seed firm now provides quality corn (nothing less than 95% germination), plus soybean, sorghum and alfalfa seed?

You're absolutely right ... Keltgen Seed!

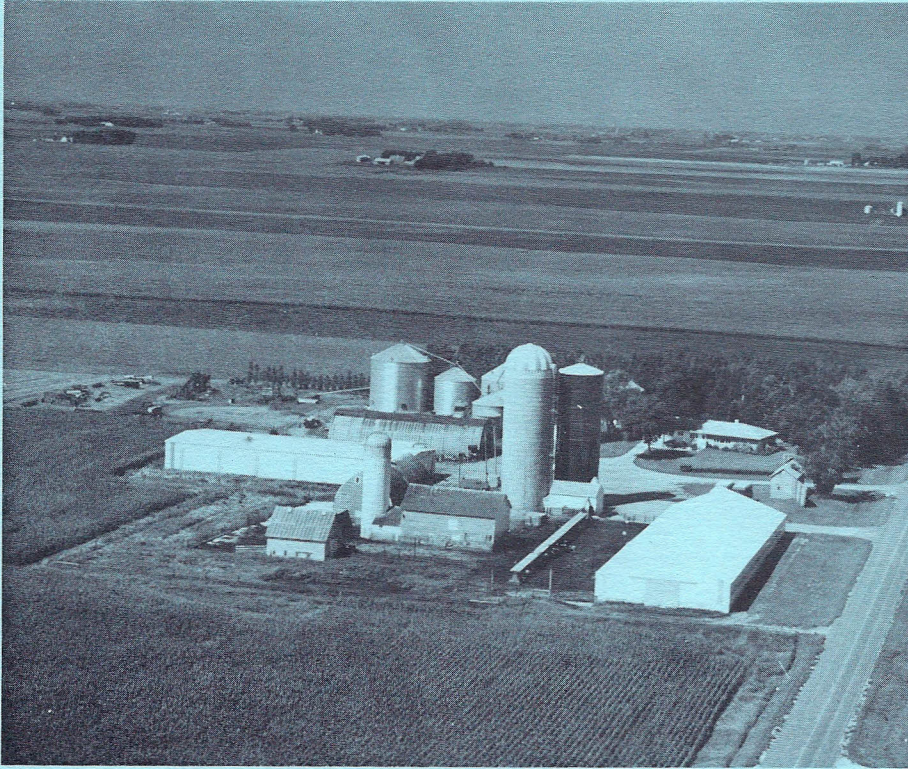
**"Good as Gold" and pleased to be a
sponsor of the 1992 Minnesota
Cattlemen's Summer Tour**



OLIVIA, MN
1-800-325-5759



SCHEIBEL FEEDLOTS

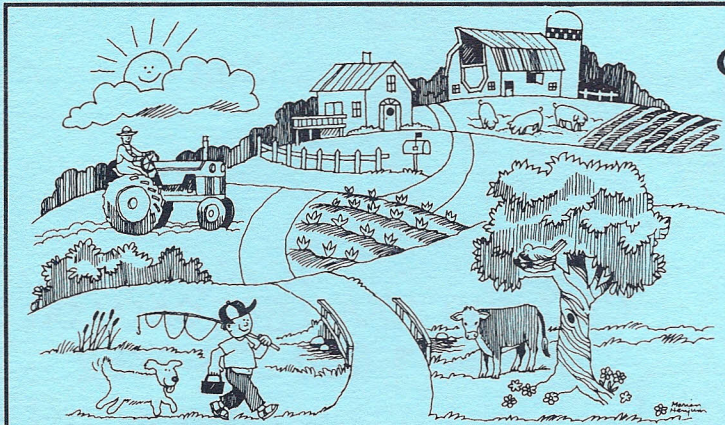


Henry and Donna Scheibel have always operated a feedlot on their family farm south of Bird Island. Henry's link to cattle feeding traces back to 1952 when he began to operate his father's farm. Today the operation includes their two sons Douglas and David who like their father have experienced many variations of cattle feeding.

Dairy cattle have always been a part of the cattle enterprise. In the 1960's the Scheibel's bred and marketed Holstein Heifers, that led to starting small holstein heifer calves and backgrounding them for the springer market. Doug and David bought week old heifer calves as they began their cattle feeding careers. In the early 1980's a switch was made to finishing cattle.

Today the Scheibel's finish 1,500 head a year for the Beef industry. Holstein Dairy Beef amounts to two thirds of their capacity with the balance being traditional beef breeds. Typically, 800 to 1,000 lb. steers are fed a ration that consists of Alfalfa haylage, wet and dry corn plus supplements. Their feed system allows for simultaneous weighing of each ingredient and constant delivery to either a belt feeder or into a feed wagon.

Their north barn has two 250 head lots with feeding on two sides of a belt feeder. These cattle can be put into three pens, this allows for an empty pen for cleaning. A new south barn replaces the two old hay loft barns. This has four pens plus loading and working areas as well as a sick pen. Capacity of the three larger pens is 75 head each plus 50 head in the fourth pen.



"Hometown Banking With Your Neighbors & Friends."

State Bank of Bird Island

Bird Island, Minnesota 55310

(612) 365-4111 / 365-4537



Member FDIC

RECOGNITION PAGE

MEAL SPONSORS

Harvestland Co-op^{***}
Farmers & Merchants State Bank of Springfield & Morgan^{**}
R & W Feed and Farm Supply^{**}
Malecek Trucking^{*}
Hubbard Milling Co.
Sleepy Eye Auction Market
Springfield Stockyards^{*}
Running's of Springfield
Sleepy Eye Farmers Elevator^{**}
1st American Bank Southwest

Meadowland Co-op^{***}
State Bank of Bird Island^{*}
Sleepy Eye Vet Clinic^{*}
Springfield Vet Clinic
Sanborn Farmers Elevator^{*}
Midland Consulting
Gluth Oil of Morgan
Comfrey Shipping Association

POP STOP SPONSORS

Meadowland Co-op^{***}
Harvestland Co-op^{***}

CAPS

Minnesota Beef Council
Redwood Cattlemen

MORNING COFFEE-ROLLS

Farm Credit Services of Brown County^{**}
Farm Credit Services of Redwood County

REGISTRATION SPONSORS

Jackpot Junction^{**}
Keltgen Seeds
Pioneer Hi-Bred
Pitman-Moore
Haas Livestock
Central Livestock

NOON MEAL

Cenex/Land O' Lakes and Affiliated Co-ops^{***}
Minnesota Valley Bank of Redwood Falls^{**}

BUS TOUR SPONSORS

Cargill-Nutrena^{*}
Purina Mills^{*}
Sleepy Eye Vet Clinic^{*}
R & W Feed and Farm Supply^{**}
Springfield Stockyards^{*}
Supersweet Feeds^{*}
Parker Livestock Supply^{**}
Meadowland Co-op^{***}
Harvestland Co-op^{***}
Lamberton Stockyards^{*}
Jackpot Junction^{**}
South St. Paul Livestock Market^{*}
Central Bi-Products^{*}
Cenex/Land O' Lakes^{***}
Minnesota Corn Processors^{*}

EVENING STEAKS

Virgorena Feeds and Vigorena Dealers^{***}

ASTERISKS DENOTE MONETARY CONTRIBUTORS

*** \$1,000+

** \$500+

* \$200+

...1992 BEEF TOUR EXHIBITORS...

Minnesota Cattlewomen

Vigortone Ag Products

Upjohn Co.

Hubbard Milling Co.

Hoffman-Rouche

Syntex Animal Health

Pitman-Moore

Purina Mills

Steve's Feed & Farm Supply

Sioux City Livestock Market

Cenex/Land O' Lakes

Qlf Feeds

Miller-Sellner Implement

Pioneer Hi-Bred

Bruggeman Co.

Golden Sun Feeds

Central States Marketing

Lakeland Vet

Vigorena Feeds

Parker Livestock Supply

Pfizer

Minnesota Beef Council

Foundation for Responsible Animal Care

Wilson Trailer Sales

Broadcast Partners

Sioux Automation

Sioux Nation Vet Supply

Oltman Agri-Sales

Rhone-Poulenc Animal Nutrition

Hoechst-Roussel

American Cynamid

Weltsch Equipment, Inc. - Ford-New Holland

Schoessow, Inc.

Thank You...

It was great having you attend our tour. We hope you found our tour interesting and fun as well as educational.

Thanks to all the local officers, directors and members who provided us with their assistance in preparing for this event. The beef industry plays an important part in all our lives.

*Thanks for your support!
Roger Kettner, President*

