



VICTORIAN OUTBOARD CLUB INC.



Donehue's LEISURE



Welcome to the 2024 Donehue's Leisure Archer Eade Memorial.

The Victorian Outboard Club would like to welcome all APBA registered competitors to the 2024 event at Lake Charm Saturday 2nd March 2024.

A Huge program is again on the cards with the 1.6 lt Hydro, 550CC and 2700CC outboard Australian Championships up for debate. We will have speed bracket racing, Juniors, Hydros, Formula Powerboats, and outboard monos plus the thumping Big Boat categories as well.. A big fast track with wide sweeping corners is the plan on the water and the hard working team of the Victorian Outboard club will do all we can to make it a great event for all competitors.

Food, Coffee and ice cream vendors will be on hand on the beautiful grassy banks of the jewel of Ganawarra shire's lake charm Foreshore Caravan park. Tell your friends and supporters to pack a deck chair, a shade tend and a picnic blanket and relax amongst the palms at our annual event.

Our Auction and social event will be a highlight once racing has concluded... and with the warm Autumn nights expected we look forward to your company on the lake charm powerboat club lawns...

100% of all fundraising will be once again donated to Red Nose and what a great cause it is. We are really proud of the commitment made by all of you each year!!



Event Schedule
Friday 1st March :

On arrival all competitors/teams etc are to visit the office and be allocated access wristbands, pay camping fees etc

2:00pm Pit Area Opens

- Teams can commence setting up tents and pit areas (Refer Pit Diagram)

2:00pm-6:00pm Registrations Open in Control tent.

- Registrations, wrist band allocation, Payments and scrutineering form collection.
 - Note pre-Payments preferred. Payments on the day must be cash.
 - An invoice will be sent on receipt of entry.

2:00pm-6:30pm Scrutineering Open

- Scrutineers will be onsite in the Pit area, once you are ready for scrutineering please bring your boat to the Suzuki Marine Tent for signoff.
- NOTE: No Tech Inspections to be conducted at the event.

Important Notes:

- The Lake is open to all boats on Friday, if you choose to launch you must comply with all state boating laws for inland waterways, speed restrictions etc . There is no closed practice session.
- CRANE: A crane will be onsite for a limited number of users. An additional fee of \$150 will be payable for those authorised to use the crane. All boats utilising the crane must be onsite Friday Evening to allow for set up of the area unless agreed to prior.

TO BOOK YOUR CRANE SLOT EMAIL
vocsecretary@gmail.com





Race Day Saturday 2nd

6:30-8:00 Scrutineering open Pit Area

- All remaining boats to be scrutineered and forms lodged prior to briefing, please ensure you are 100% ready for the scrutineer. Jacket, Helmet, Suit, Paperwork etc. NOTE: There will be no Tech Inspections.

6:30-8:00 am Registration and Breath Testing at Control Tent (refer map)

- All Drivers must complete Breathalyser by 8:00am to be entered on the roll for briefing.
- All registration and scrutineering forms lodged and payment made.

8:30 Drivers Briefing at Control Tent

- Drivers' Roll call at 8:30, all drivers must be in attendance, failure to attend briefing will mean withdrawal of your entry. No Exceptions.

9:00am-5:00pm Racing program

- All classes Outboard and Inboard

12:30-12:45pm Lunchbreak all Boat crews and Officials.

4:00pm Donohue's Leisure Archer Eade Memorial

- Drivers who have qualified in the heat races will face off for the ultimate outboard honours for 2022

4:30PM "The Gauntlet Invitational"

- The two fastest Tunnel Boats, Inboards and Hydroplanes do battle to settle the score

Approx 6:30pm Presentation All Classes at the boat club.

- Join in the celebration as we present 1st, 2nd and 3rd to all classes, plus the Archer Eade Memorial and Gauntlet Trophies.
- Dinner will be served from 7:00pm and we can guarantee the best meal you could want.

o **DINNER PRE BOOKING REQUIRED MORE INFORMATION TO FOLLOW**

8:30pm Its Auction Time for SIDS KIDS.

- Be enthralled by "*The Voice of Racing*" with our MC Dave, The Legend, Bishop.
- Get Involved in the fundraising spectacular and bid on a huge range of items, Mystery Prizes, experiences and raffles.
- Bid for the naming rights to the 2025 Archer Eade and Gauntlet trophies.
- Note: Donations over \$100 are tax deductible. Check out the VOC facebook page for more details!

Event Information:

Location: Lake Charm Powerboat Club is located just off the Murray Valley Highway approximately 20km North of Kerang Victoria . Kerang is the nearest major shopping centre and fuel service stations. Allow 3 ½ hours from Melbourne.

Location Map: Includes Lake Charm foreshore/Caravan park/Powerboat Club



We have worked closely with the Gannawarra Shire and they have advised of some specific conditions that they require to ensure the safety of all participants and spectators is maintained. Below is an overview of these, the VOC expects all competitors and crews to comply with these requirements if you require clarification please contact us to discuss.

Special Event Notes:

- The spectator area and foreshore is a public reserve, as such no vehicles are permitted to park in this area. It is reserved for use by pedestrian traffic only. Shade tents etc are permitted providing they are securely anchored.
- No Fires are permitted in the spectator zone on the foreshore at any time, fire buckets etc may be available for use in the caravan park grounds, please enquire with the park manager.
- The pit area will be marked, and the following conditions apply: No wristband no entry.
 - no open toe footwear
 - no Smoking
 - No drinking of alcoholic beverages during the permit times.
 - Children under the age of 10 must be accompanied by an adult.
 Competitors breaching these rules may be issued with a warning or further action.
- The Crane area will be marked, and all spectators are required to remain outside this marked area, crews and operators only to enter this zone.
- No Pedestrian access to the powerboat club via the Pit area.
- All vehicles when reversing must have a spotter in place to assist.
- **No Trailer riding! Drivers only and they must be in a seated position at the helm**
- Under no circumstances is there to be refuelling on the water or foreshore. Re fuelling is permitted in the pit area away from the launching ramps. The shire will have representative's onsite during the event and are able to issue infringement notices should anyone not comply with these requirements.

Site Map

Yellow Shaded Areas Are Pits:
Closed With Pedestrian Bunting and existing fencing.

Red Square Indicates Launch Area

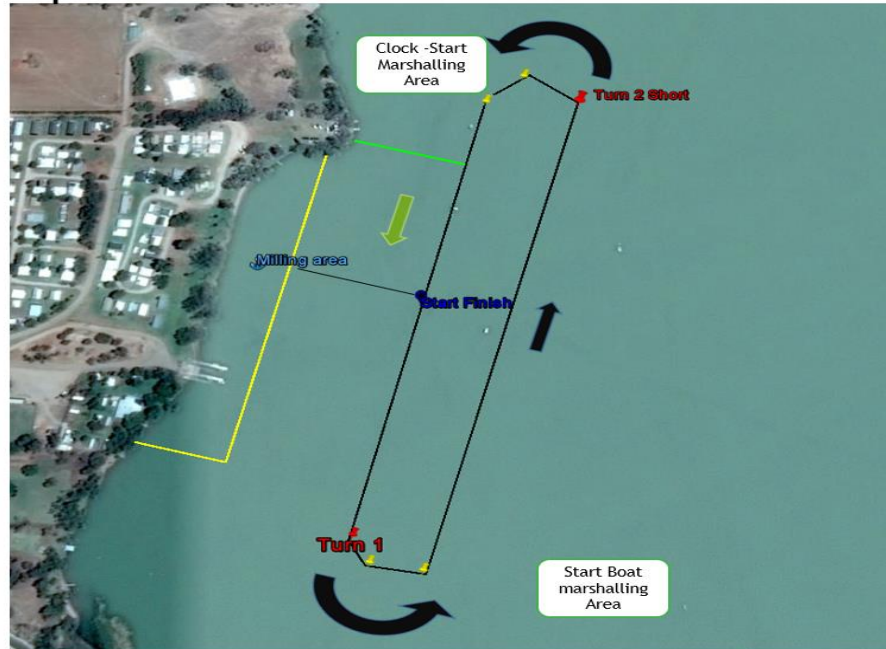
Green Triangle is Race Control / Event Control

Yellow Triangle Crane enclosed as pit area



The Course Saturday All Races :Below is an overview of the intended course, weather conditions may necessitate a change to the course which will be communicated at the Drivers Briefing.

Course Map Short Course



Course Notes:

Milling Area:

- The milling area enables a smooth transition of launching and retrieving to make sure we keep things moving it is located in front of race control so we can visually check off competitors in heats. Please ensure that;
 - Boats should be launched and in the milling area prior to the completion of the previous race.
 - Drivers must wear full safety gear, including helmets in the milling area.
 - No Wash!! As the milling area is adjacent to the course please ensure that any disturbance is kept to a minimum, you will have ample time to bring engines up to temperature on sighting and start laps.

Clock Starts:

The clock will be located directly in front of the control tent adjacent to the flag marshal.

- The course will show a Blue Flag when you are permitted to leave the milling area.
- Race 1 you can then proceed to a full sighting lap and then continue around the course to turn buoy 2.
- There you will wait in the “Clock Start Marshalling Area” for the flag sequence.
- Subsequent races will be the same without the sighting lap, you are to leave the milling area and proceed around the course (at speed) to the “Clock Start Milling Area”
- NOTE: The Start Finish line is a line running directly from the control tent to the start finish buoy, All times will be taken at this point, including early starts in handicap races.



Start Boat Starts:

- The course will show a Blue Flag when you are permitted to leave the milling area.
- Race 1 You commence a full warm up/sighting lap and proceed to the “Start Boat Marshalling area” where the start boat will be waiting. Subsequent races you will leave the bank under the control of the start boat.
- A “Start Boat Turn Buoy” will be in place to ensure consistency in each heat and save confusion. This will be explained at briefing.
- **NOTE:** The starter may elect to start the race at any point along the front straight depending on the line-up and conditions.

Formula Future:

- Formula Future races may run on a reduced course on the start finish straight. This course may vary depending on conditions and will be communicated at briefing and throughout the day.
- All formula future races will be Clock Starts with Handicap.

Launching/Retrieving:

- The ramp area will, as always, be congested. You are to follow the instructions of the ramp marshal at all times to ensure we minimise delays. Penalties may apply to teams not following the direction of an official.

Boat Parking:

- There is ample sandy beach parking along the front of the spectator area, we ask that all competitors who are in a position to leave boats in the water between heats etc please do so. Teams please bring a large peg/stake and a mooring rope for this purpose.
- **NOTE:** Formula Future Competitors may be required to leave boats in the water in front of the Control tent.

Australian Outboard Titles: Specific notes

- 550CC Super sports Australian Championships
- 2700cc 4 Carby Restricted Super Sports Australian Championship.

These notes are intended as a guide to assist you as some may not be aware of the specific rule requirements ; **you must refer to the APBA rule Book to ensure you meet all requirements to compete.** (*Our notes are in italics below the rule*)

Important: Anyone Competing in any championship other than unlimited, must have an APBA sealed engine and the relevant paperwork. Championship entries must be received by the Vic state secretary 14 days prior. (more details below)

General Info:

- 906.01 Australasian and Australian Championships are to be run in two (2) Heats.
- 902.21 Flying Start races can be started by either Clock & Flag or Pole Boat Flying Start (Rule 902.12).
 - **NOTE: We will be using a clock start for all outboard races. A pole boat for all inboard/Speed Bracket Races.**





- 901.11 Unless conducted as a Series, a Championship will be contested over a number of Races within an Event, or, should the number of entries warrant, the Championship may be contested over a number of elimination Heats and a Final. The purpose of the elimination Heats is to eliminate Boats until the predetermined number of fastest Boats is reached, whom shall contest the Final.
 - **Note: We will advise when entries finalised if eliminations will be required.**
- 901.12 Pole positions for Heat 1 (or Elimination Heats as described in Rule 901.11) may be drawn by ballot before or at the Briefing, or at the Race Committee's discretion, by utilising times recorded from Boats completing timed laps, no earlier than one (1) day before the Event.
- 901.121 Pole positions for Heat 2 may be drawn by ballot, before or at the Drivers' Briefing, or at the Race Committee's discretion they can be allocated utilising the finishing places from Heat 1.
 - **NOTE: We will be drawing poles for Heat 1 Friday**

Important:

You are permitted to enter up into MORE THAN ONE OF the championship races, providing you meet the criteria for the class entering.

EG: a 2100 sports mono competitor may also enter into the Sports Mono MOD VP class. (standard gearbox etc) and can potentially enter into the Unlimited Outboard category.

EG 2: an 1800 super sports (Quickfoot) can not enter the sports mono category due to the gearbox requirement. They are eligible to enter unlimited outboard however.

NOTE: The officer of the day has the right to refuse entry if there is a concern around lap-times in the interest of safety.

GENERAL INFORMATION:

Safety Levy Single class :	\$220 all classes
Additional Class Entered;	\$50.00 per Class
Crane Fee:	\$150 per boat
Formula Future:	\$75 per boat

Late entry fee \$100 for all entries received later than 23/2/2023

Entry Fee payable to VOC Bendigo bank: BSB 633000 ACC: 168641512 (use surname as reference)

Entry Form DOWNLOAD AT : <https://www.ausapba.com.au/downloadforms.html>

VIC SERIES /GENERAL ENTRY PLEASE SEND ENTRY FORMS TO VOCSECRETARY@GMAIL.COM

AUSTRALIAN CHAMPIONSHIPS ENTRIES TO SECRETARY@VICAPBA.COM.AU , CC VOCSECRETARY@GMAIL.COM



You will be required to pay a bond to enter Australian Championships as per the APBA rules. (credit card details may be provided with your entry to cover this requirement)

ENTRY BOND – A bond of \$150 per Entry per Class entered must be lodged with each entry to all Australasian and Australian Championships, Speed or Time Trial events. The bond will be returned to the entrant once their Boat has been presented for Scrutineering at the Event, or if the Event is cancelled, or at other times at the discretion of the Club or Council conducting the Event.

ENGINE MEASUREMENT:

203.02 Any Driver or Boat Owner wishing to enter a Championship (other than Offshore Championship), Speed or Time Trial, Special Record Attempt or Special Event must complete an Entry Form. The Entry Form must be accompanied by a current Engine Measurement Certificate confirming that the engine has been measured, sealed and is eligible for the Class entered. Exemption to the provision of the Engine Measurement Certificate may be granted by the host Council.

(NOTE: IF THIS IS A CONCERN PLEASE CONTACT THE APBA SECRETARY AS OUR GOAL IS TO ENABLE ENTRIES WHEREVER POSSIBLE INCLUDING THE USE OF A HOLDING SEAL.)

Checklist:

1. Send entry form to either VOC or VIC secretary as per above.
2. Pay entry Fee .
3. Australian Championships entry : Send to Vic Secretary
 - a. Entry Form for every class entered.
 - b. Copy of Engine Measurers Certificate
 - c. Credit Card details to cover bond.
4. You will receive acknowledgement of payment and entry received.

Fundraising Dinner: TBA

Contacts:

General Enquiries:	Andrew Murphy 0488 613 823 / Dave meades 0407 124 552
VP Racing	Tim Martin : 0417 332 329
Race Secretary	Simon Curwood: 0412 803 274
Crane Booking:	vocsecretary@gmail.com
Scrutineering:	Daniel Cook: 0418 858 536 / Richard Meades 0407 124551
Sponsorship/ Media :	Kim Bull : 0407 794 572
SIDS FUNDRAISING:	Sam Lucas 0428 319 454

Accommodation: Lake Charm foreshore Caravan Park

NOTE: camping Wristbands will be allocated when fees paid, please ensure these are worn throughout your stay.

Emergency Services:

We have suitably qualified medical officers onsite; in the case of an emergency the medical officers assume control of the situation over and above all others. The medical officer will be on the water for all events.

We have two suitably qualified and experienced divers to provide support. Cell boat drivers please ensure you make the effort to introduce yourself and take them through your canopy release etc.

Should an emergency situation arise you are to contact Race control immediately or dial 000.

You will be provided with a contact sheet at Registration for scrutineers, race organisers, committee etc.

See you there.

Archer Eade Memorial

