

Fuel Tanks

To meet all your storage needs



Our Tanks

- Are Heavy duty UL 142 generator fuel tanks
- Are available in Custom sizes
- Have Competitive Pricing and quick turn around times.

500 gallon UL 142 tank



140 gallon UL 142



150 gallon UL 142



Horizontal Cylindrical Tanks



Table of Contents

Fuel Tank Specifications

Pictures of Fuel Tanks	2
Table of Contents	3
Construction	4-5
Venting Requirements	5
Coatings	5
Tank Capacities	6
Standard Features	6
Spare parts	7
Tank Drawing	8

UL - 142 Listed Tank

Engineered Manufacturing Corp. specialize in the fabrication of UL-142 sub base tanks. The tanks are manufactured to the following specifications:

Tanks are of heavy - duty construction utilizing primary 3/16 steel plate. Double wall design tanks with the inner tank being constructed with 3/16" thick mild steel. Tanks are rectangular in shape and have a heavy formed channel for main frame. All welds are full fillet welds at no less 1/8" .

All of the load support for any generator set is to be done by the side channels on the outer tank only so as not to place the inner tank under any stress from load or vibration. If the generator base tank is wider than the generator set to be supported, structural supports are to be used to span the width of the base tank from side channel to side channel. The structural supports can then support the genset. All load support is transferred from the supports to the outer tank side channel.

Every tank is completely inspected and tested. Pressure leak tests are performed at 3 to 5 psi on the primary tank to ensure compliance with UL - 142 and to provide for maximum structural integrity. Our tanks have undergone top load tests, Buoyancy tests and hydrostatic testing.





Normal Vents are sized in accordance with API (American Petroleum Institute) for venting Atmospheric and Low Pressure Storage Tanks. Normal Vent is not less than 1-¼' in diameter.

Emergency Vents are determined in accordance to the wetted area of the tank as per UL-142 table 8.1 . The different sizes used are 3", 4" or 6" . The opening pressure is .5 psig with full opening at 2.5 psig. In Closed top diked tanks, venting is with a unique atmospheric, weatherproof design developed, which is sized to accommodate the total required capacity for venting.

Coatings

Standard color is black but custom colors are available. Interior surfaces of the tank are fogged with a rust preventative to ensure that rust will not form prior to first use.

Tank Capacities

Rated gallon Capacity (Gallons)	Lift lug plate Thickness (inches)	Max load (lbs)
1000	1/2	56,000
650	1/2	56,000
500	1/2	56,000
400	3/8	40,000
300	3/8	36,000
200	3/8	28,000
150	3/8	28,000
100	3/8	20,000
75	3/8	12,000

* Fuel cap included with all fuel tanks. Larger fuel tanks can be quoted upon request.

Standard Tank features include:

Electrical “ Stub up “ areas as needed for customers electrical connections.

Full Pipe Coupling

All pipe connections come with plastic plugs

Fitting include; fuel supply and return utilizing double tapped threaded bushing

Fuel Fill (2”NPT),

Normal vent (1-¼”min)

Emergency vent (as Req'd)

Drain (½ “ NPT)

Optional Leak Detector Switch

Lift lugs with capacity rating of up to 14,000 lbs per lug.

Also any other fittings as required by customer.

Options and Features Gauges, Fill and Venting

Emergency Vents (2" - 6")

Normal T type Vent - 1-¼",

8" riser tube to elevate T type vent

2" NPT Fill Neck with lockable cap and 8" pipe riser.

Fuel Level Gauge - mechanical -Fuel Level Gauge - electrical

Along with our quality UL Listed tanks:

Single wall tanks: Oval, Round and Sub base

Radiator Supports

Engine Cross Members

Generator Cross Members

All mounting brackets for the generator engine.

Air Cleaner Mounting Brackets

Welded and Removable Lifting Eyes - 4 Point

Manual Fill Couplings with Spill Containment

Overfill Prevention Devices

Audible, Visual and Remote Alarm switch

Large variety of agricultural equipment

Advantages with Engineered Manufacturing:

Competitive pricing of products

Quick turn around of quotes

Short lead times

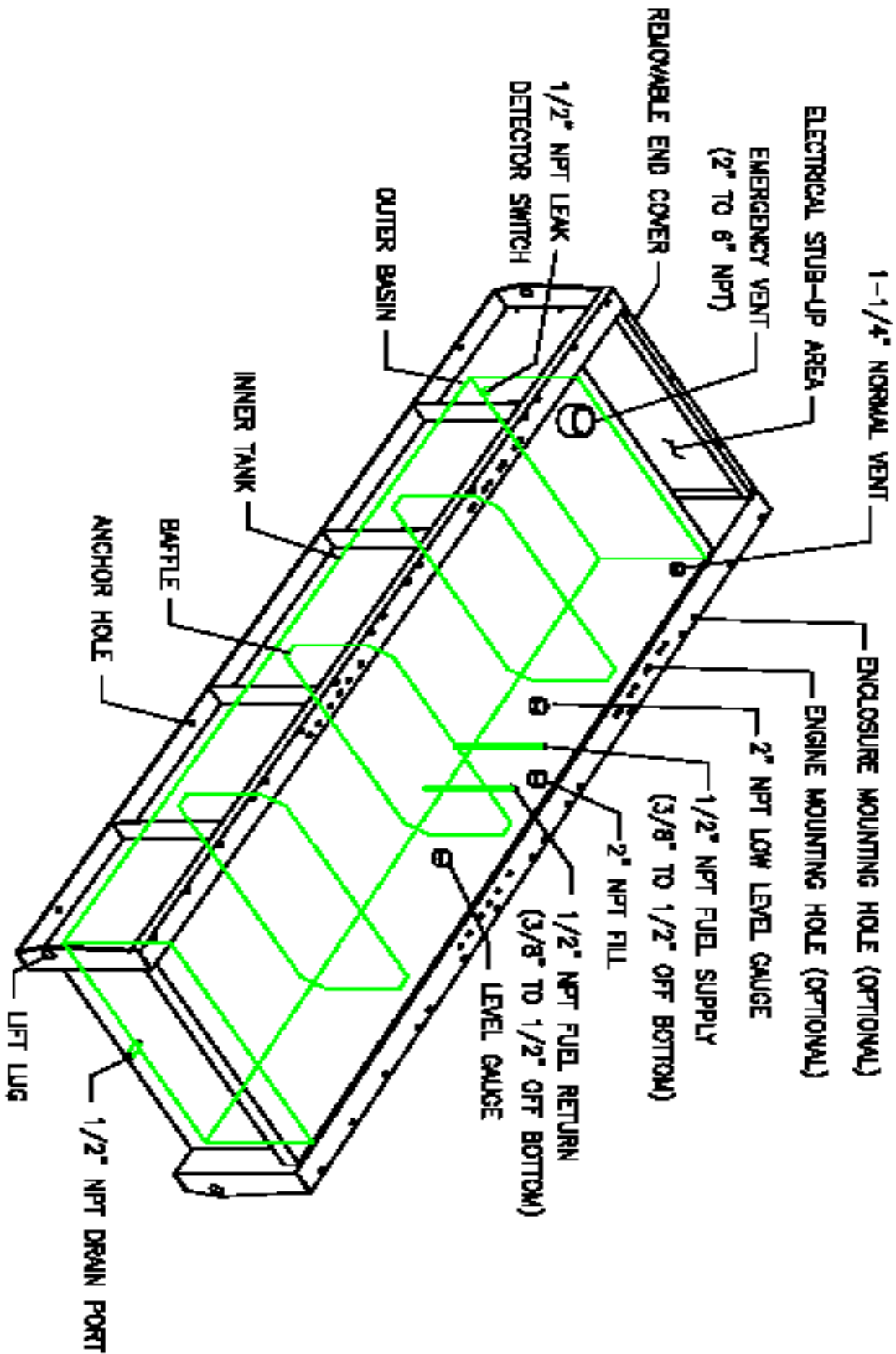
Quality products Low cost designs

Engineering support

Excellent service

We also export

DOUBLE WALL UL-142 CERTIFIED SUB-BASE TANK



Engineered Manufacturing Corp.

Phone: 305-693-0089 305-691-2226
 Fax: 305-691-2210

We accept :



3775 N.W. 81 St.
 Miami, FL 33147