



## Magnetic Liquid-Level Gauge

### Application

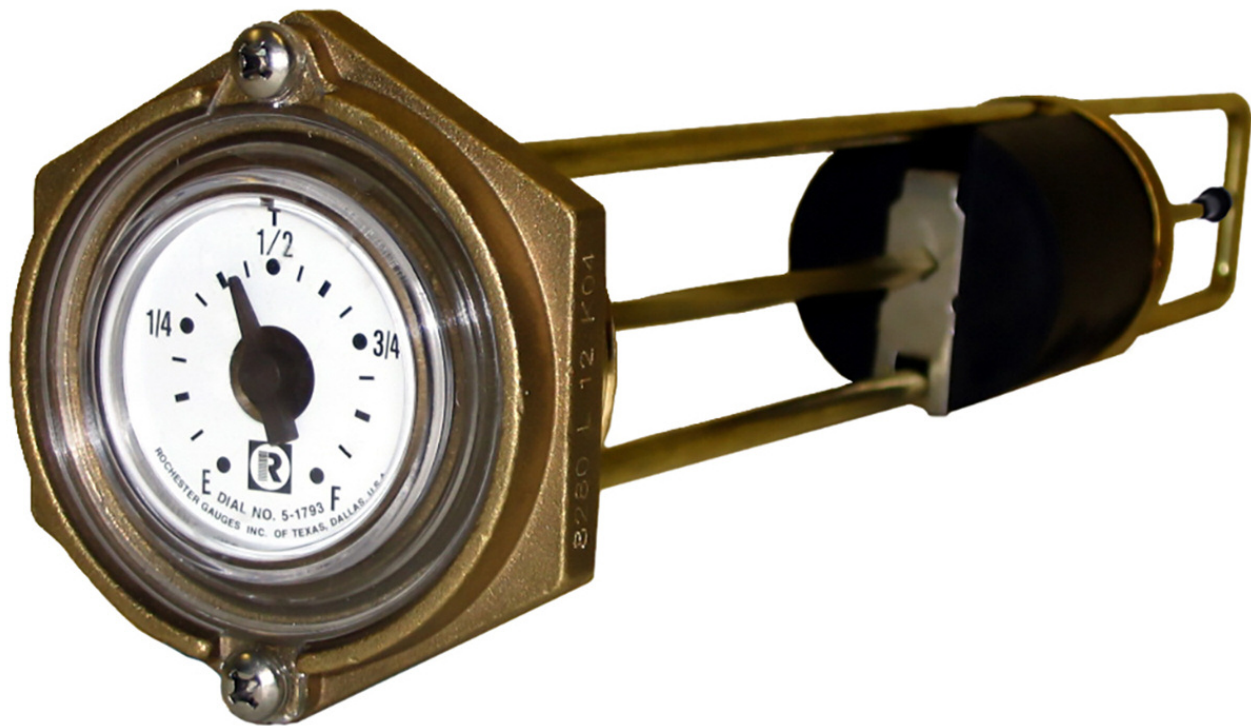
The brass and stainless-steel construction of the 8200 Series spiral gauge makes it suitable for use in marine applications and in measuring levels of water, oil or fuel. They are also used in a variety of construction and maintenance vehicles such as road sweepers and water spray trucks.

### General Information & Features

The Model 8240 spiral gauge incorporates a strong nickel-plated Neo magnet. The magnet is capable of driving a Twinsite™ sender that sends an electrical signal to a remote receiver and provides a direct, fractional reading.

The model 8260 spiral gauge is supplied with an easy-to-read side-view fractional dial. The model 8280 spiral gauge is equipped with a standard top reading fractional dial.

All 8200 Series spiral gauges have a 1½" MNPT tank connection, and are suitable for tank pressures up to 25 PSIG [1,7 Bar] maximum. They are designed for top mounting only in tanks up to 36" [914 mm] deep and some models are UL listed for flammable liquids.

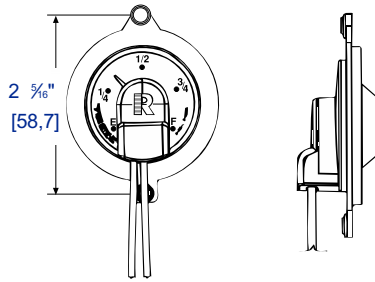
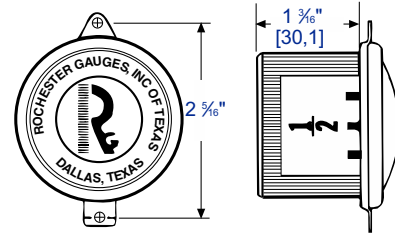
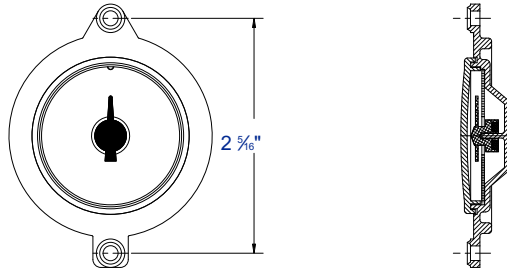
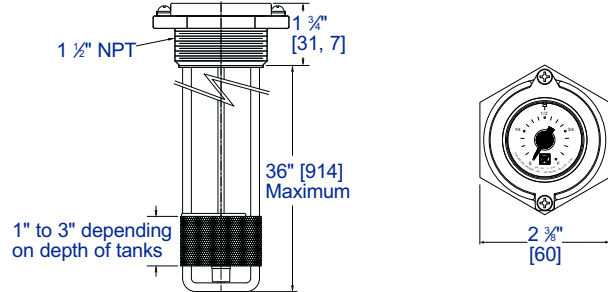


Model #	Sender or Dial Type
8240	Senior, TwinSite™ sender in choice of 0-30, 0-90, 240-30 Ohm ranges. Specify your preference when ordering.
8260	#5097S00570 side-reading Senior fractional dial
8280	#5844S01793 direct-reading Senior fractional dial

\* Materials and specifications are subject to change without notice.  
Pressure ratings subject to change due to temperature and other environmental considerations.

See reverse side for dimensional data, materials of construction, performance, and advice on how to order.

*Always Innovating • Never Imitating*

**Senior Twinsite™ Sender (Specify Ohm range)****Senior Side-View Dial****Senior Dial****Standard Construction****General Specifications\*****Mounting**

Designed for top mounting only.

**Accuracy**

Accuracy depends upon proper gauge sizing. Direct read dials +/-8%, TwinSite dials +/-12%. Accuracy may be less depending upon tank shape. Accuracy may be less near full and empty. Accuracy may be less if tank is not level. This gauge is not to be used for filling. All accuracy estimates are expressed as a percent of full scale.

**Temperature**

Standard operating range is -40°F to 158°F, -40°C to 70°C.

**Humidity**

Exposed portion is fully suitable for marine applications.

**Shock**

Suitable for marine applications.

**Vibration**

Suitable for marine applications.

**Power**

0.5 watts maximum for TwinSite™ versions.

**Tank Pressure**

0 to 25 PSIG [0 to 1,7 Bar].

**Approval**

Direct indicating gauge available UL listed for flammable liquids. Some models UL recognized for marine service.

**Note:** For gauge installation instructions see MS-516 Spiral.

**Materials of Construction\***

**Head, Support Rod, & Centershaft**  
Brass.

**Tie Plate, Guide & Bearing Pin**  
Stainless steel.

**Center Shaft Holder & Magnet Bushing**  
Acetal.

**Float**  
Nitrile rubber.

**Drive Magnet**  
Neo, nickel-plated

**Standard Dial**  
Polycarbonate, hermetically sealed.

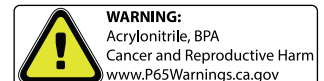
**Side-view Dial**  
Aluminum with polycarbonate crystal, hermetically sealed.

**TwinSite™ Sender**  
Polyamide.

\* Materials and specifications are subject to change without notice.  
Pressure ratings subject to change due to temperature and other environmental considerations.

**When ordering, specify:**

1. Gauge model number.
2. Tank height.
3. Ohm range on TwinSite™ versions.
4. Riser height, if any.
5. Any special requirements.



06/29/2018