

Continued ...



SOARING PERSPECTIVE*

Artist: MAE ORM

"Soaring Perspective" is a bird's view of American Legion Park following Pine Creek. The center piece is a lower flying birds view of the back portion of the park
ACRYLIC PAINT TRANSFERRED TO VINYL WRAP | 2020

13 LOCATED AT THE CORNER OF NORTH MADISON AVENUE AND HOBACK STREET



TWO LEAVES*

Artist: DELSA ALLEN

To commemorate the 50th anniversary of the Federal Wilderness Act, Pinedale's public art collection received its second photo mural install.

PHOTO MURAL | 2016

14 LOCATED ON THE WALL OF ROCKY MOUNTAIN WASH - 957 WEST PINE ST.



3 ROGUES*

Artist: BRONWYN MINTON

Carved from large beetle killed logs, "3 Rogues" has numerous interpretations from a frisky triad of animal ears to allusions of Native American stories & legends.
CARVED WOOD | 2012

15 LOCATED AT WELLS FARGO - 61 EAST PINE STREET



TWO PINE CONES ON A STICK*

Artist: PATRICK PLOURDE

Old shovels were donated by the Sublette County community for this summer long art project helmed by Maine artist Pat Plourde (2nd sculpture at SC Library).
REPURPOSED SHOVELS AND STEEL | 2013

16 LOCATED IN FRONT OF AMERICAN TITLE - 15 SOUTH FREMONT AVENUE



SCHOOL OF FISH*

Artist: DIANA BAUMBACH

Week-long residency with Learning Center children, whose designs are incorporated into the sculpture by introducing them to different printmaking techniques.
CORTEN STEEL/CONCRETE/BASIN WILD RYE GRASS | 2013

17 LOCATED AT THE CHILDREN'S LEARNING CENTER - 191 SOUTH FRANKLIN AVENUE

(*) DENOTES A PINEDALE PUBLIC ART PROJECT
MORE INFO AT WWW.PINEDALEPUBLICART.COM | EMAIL: PINEDALEPUBLICART@GMAIL.COM

Welcome to Town ...



PINEDALE GATEWAY SIGNS* Artist: DON RAMBADT

The Pinedale Gateway project is a joint project that combines art and signage to establish an enticing sense of arrival into the town of Pinedale and continuing the celebration of wildlife imagery.

COR-TEN STEEL | STAINLESS STEEL | STEEL AND CONCRETE | LOCATED ON BOTH ENDS OF PINEDALE (HWY 191)

Cabochons

Locally Designed & Produced

> See inside map for downtown locations

 NOW WE'RE HERE* Artist: CARLY COVILL 2014	 OUR PAST* Artist: DAVID KATONA 2013	 GOLDEN ASPEN SPIRAL* Artist: SHANOA GARDNER 2013
 IN THE WINDS* Artist: KOLTER BOOTH 2013	 COMPASS TRACK: CATTLE COUNTRY* Artist: CHRISTY ANSPACH 2013	 MEDICINE WHEEL* Artist: PAM CURRY 2014
 DAY AND NIGHT PINE* Artist: BETHANY CAMERON 2015	CABOCHON - Titled after the small domed and polished stones (not cut stones) in jewelry settings, this small-scale relief sculpture project is juried from our very own pool of creative and talented Sublette County residents. The chosen design(s) are enlarged and a carved wood pattern is produced, which is then cast in iron. The finished casting is then embedded in the sidewalks of Pinedale, Wyoming.	

For more info visit pinedalepublicart.com

Pinedale, Wyoming

PUBLIC ART WALKING TOUR



SIX OF ONE, HALF DOZEN OF THE OTHER
Artist: JB BOND | FORGED & FABRICATED STEEL

Sponsoring Organization's
THE PINEDALE PUBLIC ART PROGRAM
THE PINEDALE FINE ARTS COUNCIL
THE TOWN OF PINEDALE

Downtown Pinedale

PUBLIC ART PROJECTS

ROCKY MTN. WASH (6 BLOCKS EAST) 14

RIVERA LODGE 11

PINEDALE FINE ARTS

MARILYN ST.

GEARED UP

WIND RIVER BREWING CO.

ELMA AVE.

GREAT OUTDOOR SHOP

12 13 (IN PARKING LOT ACROSS MADISON AVE.)

AMERICAN LEGION PARK

10

PINEDALE POST OFFICE

9

VERIZON

SOUTH LAKE AVE.

TWO RIVERS FISHING

CHILDREN'S LEARNING CENTER (2 BLOCKS SOUTH) 8

17

NORTH LAKE AVE.

NESTED WEST

PINE STREET

SOUTH FRANKLIN AVE.

ART OF THE WINDS LOS CABOS C4

COWBOY BAR 7 C5

MILL ST.

NORTH FRANKLIN AVE.

COWBOY SHOP C3

STOCKMAN'S RESTAURANT C2

SOUTH MAYBELL AVE.

PINEDALE ART AND CRAFTS 6 C6

5

NORTH MAYBELL AVE.

C1 PINE COFFEE SUPPLY PATIO GRILL

3

23 W. PINE / JACKSON HOLE LAND TRUST

SOUTH TYLER AVE.

4 SUBLETTE COUNTY LIBRARY (ACROSS MILL STREET)

16

NORTH TYLER AVE.

C7 2 SUBLETTE COUNTY VISITORS CENTER

1

15 WELLS FARGO

SOUTH FREMONT AVE.

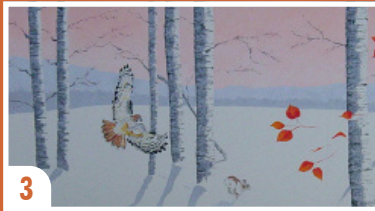
NORTH FREMONT AVE.



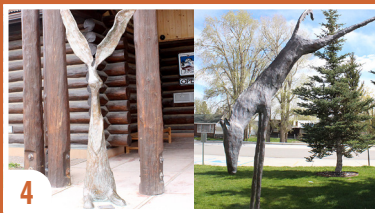
CATTLE DRIVE
Artist: PIP BRANT
After a fire claimed the building next door, Pinedale artist Pip Brant covered this scarred and soot-stained wall with a mural inspired by local cattle drives.
LATEX & ACRYLIC ON PANEL | 1980



WALKING THE LINE
Artist: JERRY MCKELLAR
A staple of downtown Pinedale, the larger-than-life "Mountain Man" sculpture was commissioned as a memorial by the family of Caroline L. Grassell.
BRONZE SCULPTURE | 2009



SHADOWS*
Artist: CHARMIAN MCLELLAN
Exploration of oriental sumi drawings, and how that stylistically translates into the land & animal-scapes of Wyoming and the western United States.
ACRYLIC ON PANEL | 2014



CHAUNCEY / HORSE 1
Artist: JIM BUDISH
In addition to a wealth of interior art, the Sublette County Library is home to the Horse and the popular rabbit that greets patrons as they enter.
BRONZE SCULPTURES | 2008



RIPPLING INTEREST
Artist: MAE ORM
"Rippling Interest" is a mural of a Colorado Cutthroat Trout showing interest in its lunch. Be sure to stop in at Pinedale Art & Crafts while viewing!
LATEX PAINT ON CINDER BLOCK | 2020



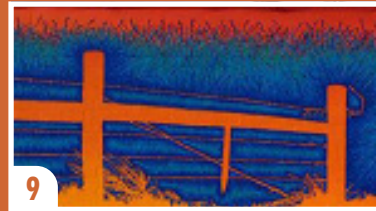
MOOSE
Artist: ROCKY MOUNTAIN SCULPTURE & DESIGN
Produced by local artists Mike & Joe Kautza for the former Moose Creek Trading Post, the Moose has been a favorite with tourists, kids and bar hoppers alike.
LATEX PAINT & SPRAYED CONCRETE | 1993



QUARTZ, MICA, FELDSPAR*
Artist: ISABEL RUCKER
Inspired by the 3 main minerals in granite; the oversized quartz, mica, and feldspar cluster is reminiscent of the granite peaks in the surrounding mountains.
POLYSTYRENE/FIBERGLASS/EPOXY/ENAMEL | 2015



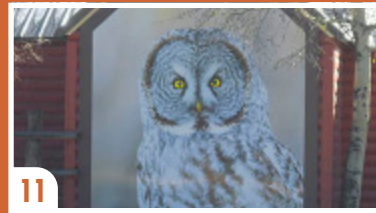
SIX OF ONE, HALF DOZEN OF THE OTHER*
Artist: JB BOND
A staple of Town Hall and inspired by natural grass forms, it also alludes to the common sights of cattail bogs and hand-held post pounders.
FORGED AND FABRICATED STEEL, CEDAR | 2013



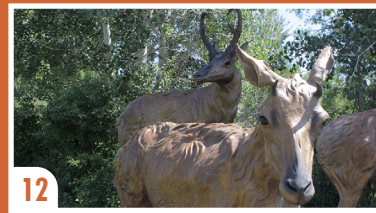
POINT OF COMPROMISE*
Artist: DAVID K. KLARÉN
The first large-scale painting to come from his Silhouette Series of black and white ink and graphite drawings, which he began in 2009.
LATEX AND AEROSOL ON CINDER BLOCK | 2014



FOUR SEASONS OF WONDER*
Artists: KIRSTEN & PALMER KLARÉN
The mural depicts the four seasons of Sublette County and the corresponding activities that young local artists Palmer and Kirsten love.
LATEX PAINT ON CINDER BLOCK | 2011



GREAT GREY*
Artist: ELIZABETH BOEHM
Photo-based mural project installed at the Rivera Lodge. The original image was enlarged 800% to its final 8' x 8' dimensions.
PHOTO PRINT ON PANEL | 2013



PATH OF THE PRONGHORN
Artist: GEORGIA BUNN
Celebrating the 2008 designation of the first federally protected wildlife corridor in the United States. Made possible through local donations.
BRONZE SCULPTURE | 2015