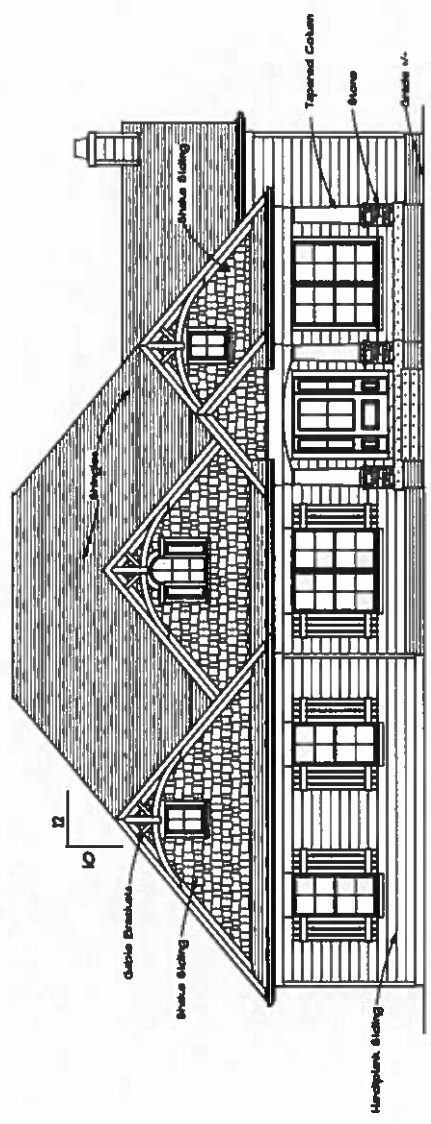
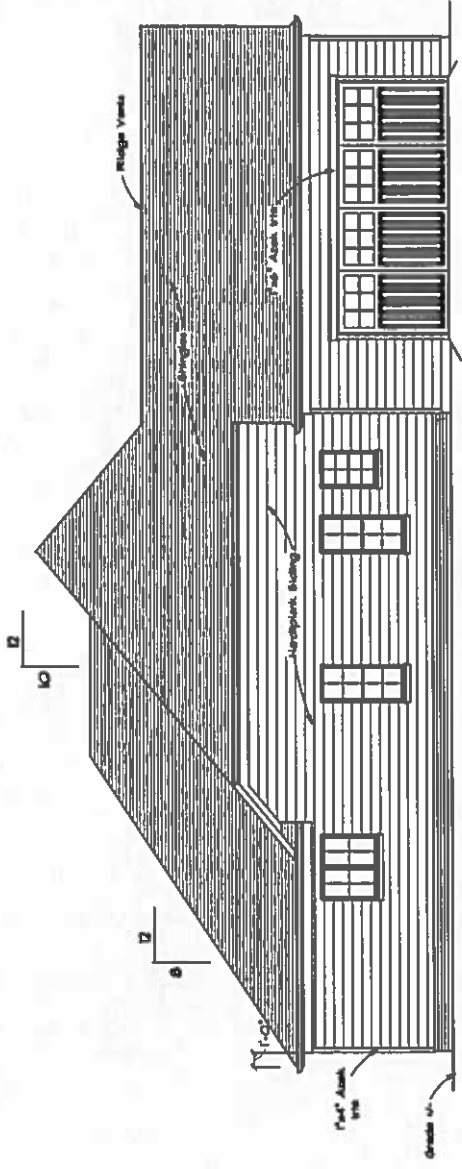


NOTE:
 Builder must verify all dimensions, drawings and code compliance before starting construction.



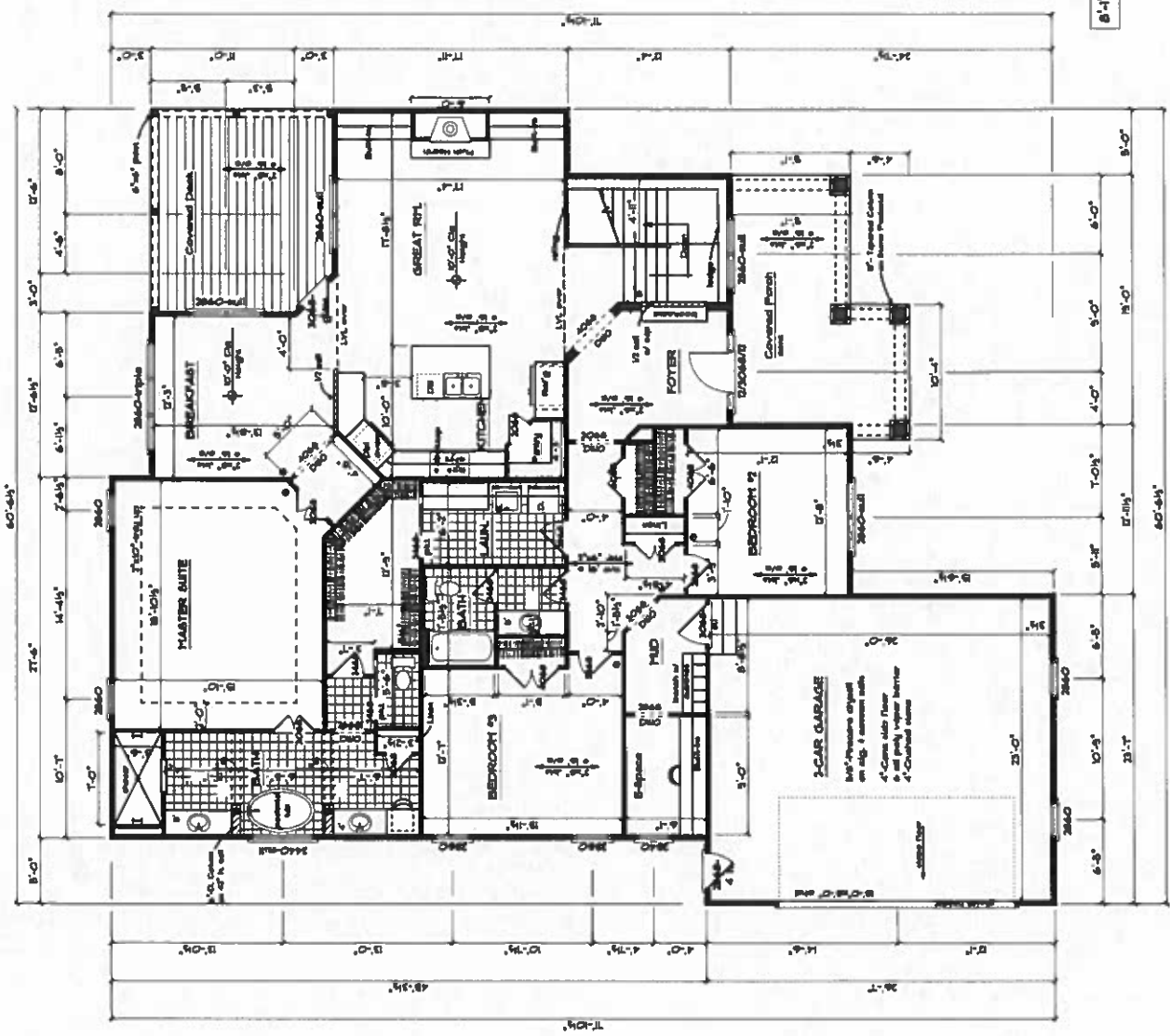
FRONT ELEVATION
 14'4"-0" 2,380 Sq Ft +/-

Drawn by
 802-956-7252

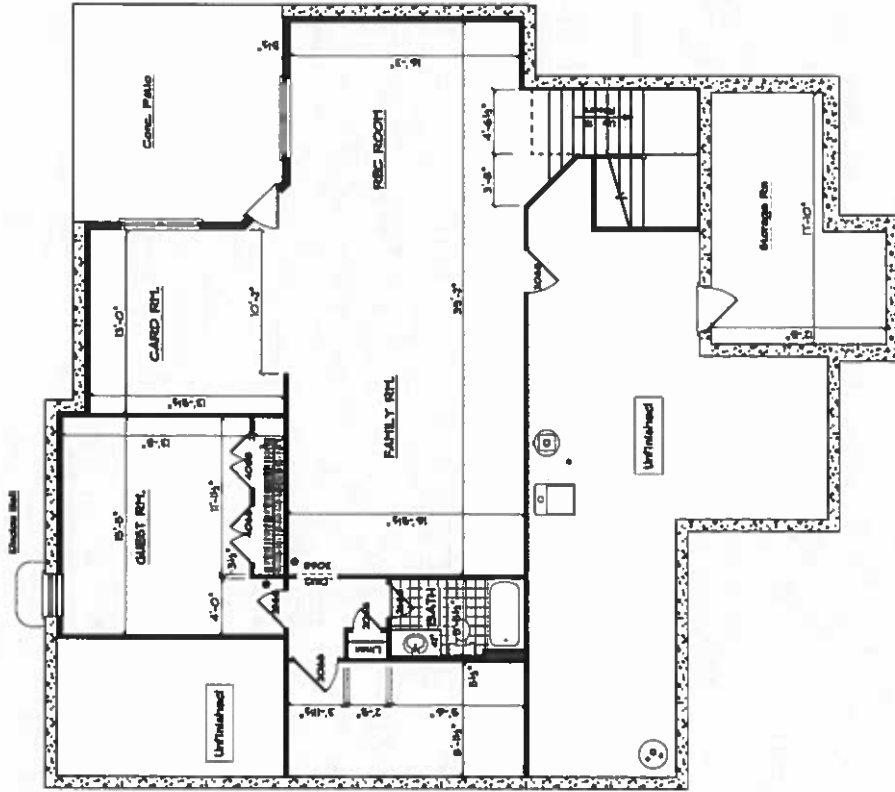


LEFT ELEVATION
 14'4"-0"

6'-1" CIG. HGT.



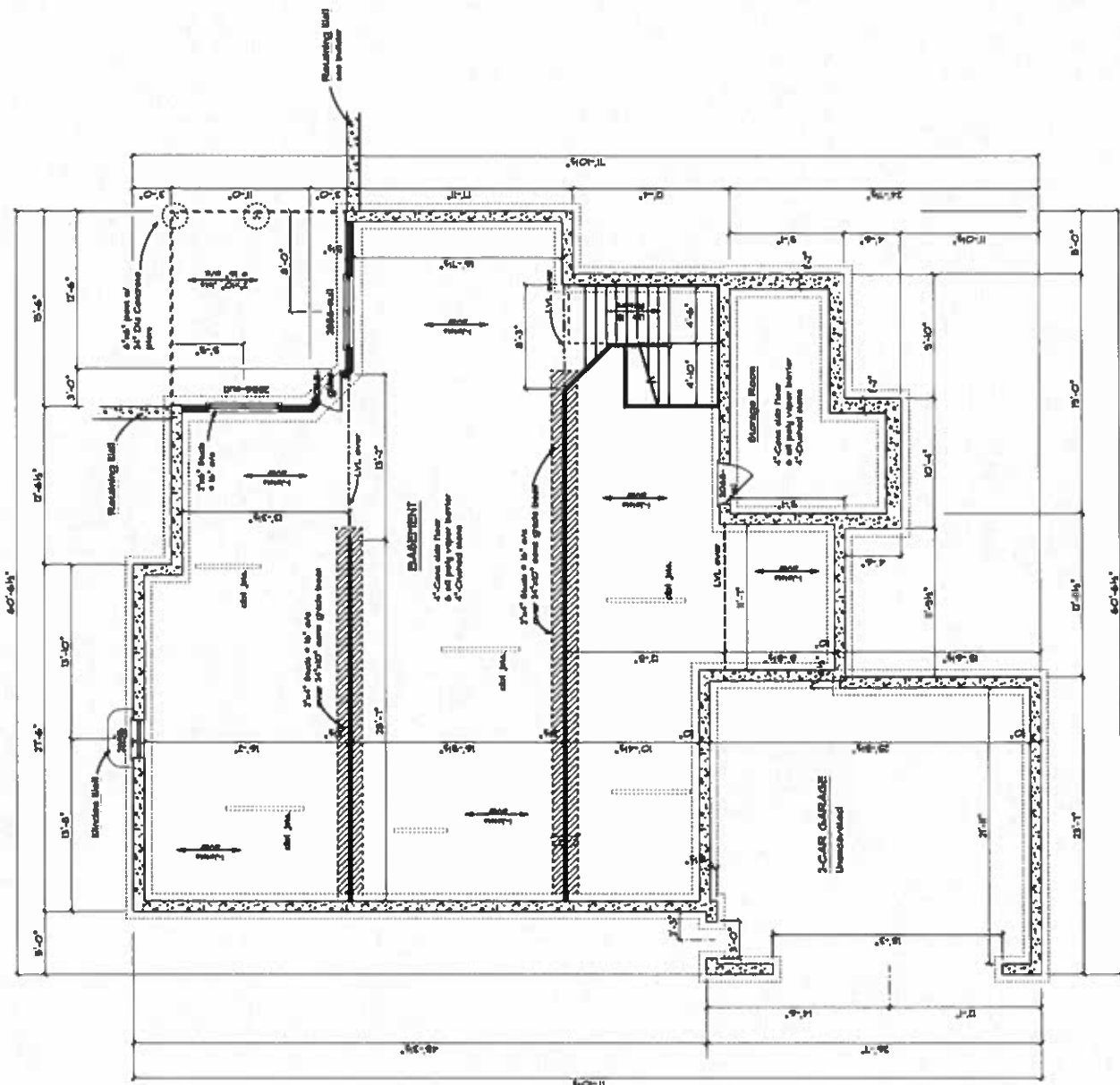
FLOOR PLAN
 1/4" = 1'-0"
 2370 Sq. Ft. +/-



B A S E M E N T P L A N

1350 Finished
649. PL. 4'

8'-4" Cig. Hgt. 4'

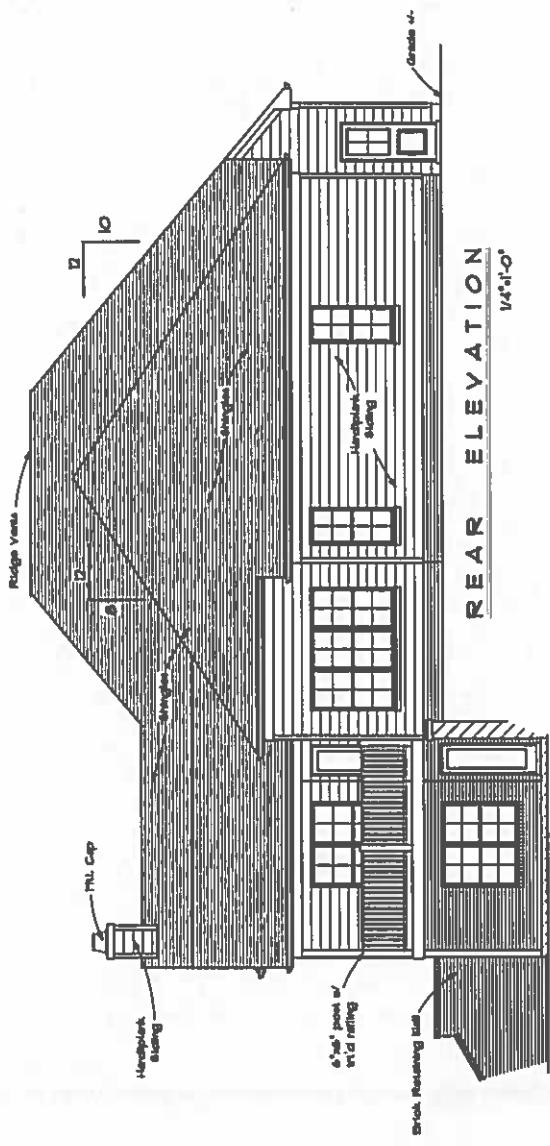


FOUNDATION PLAN

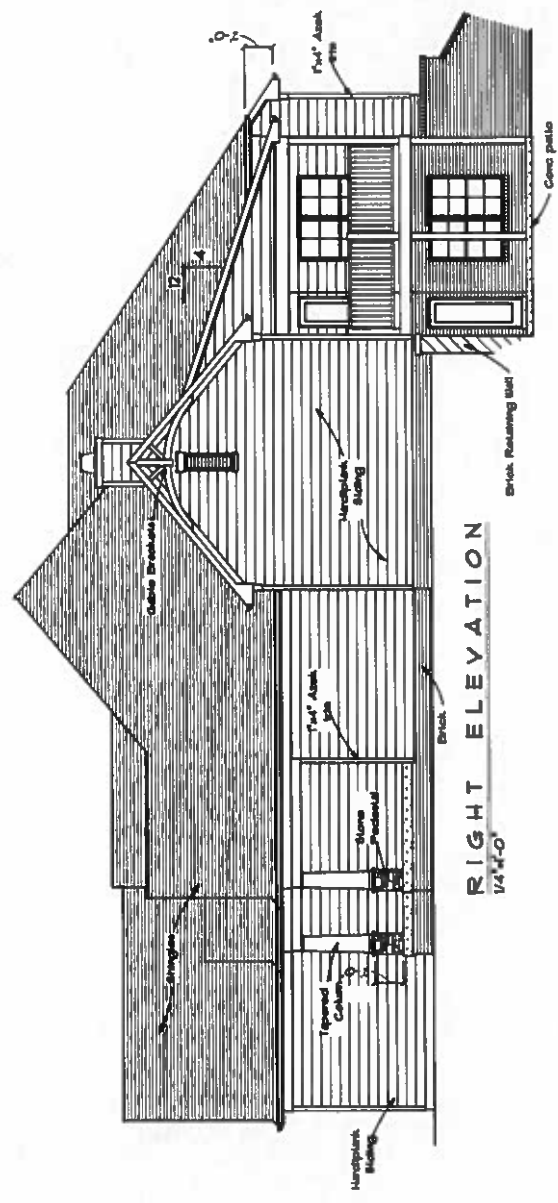
- 1. Double floor joists & all partial walls
- 2. Triple all plans at foundation walls

1/4"=1'-0"

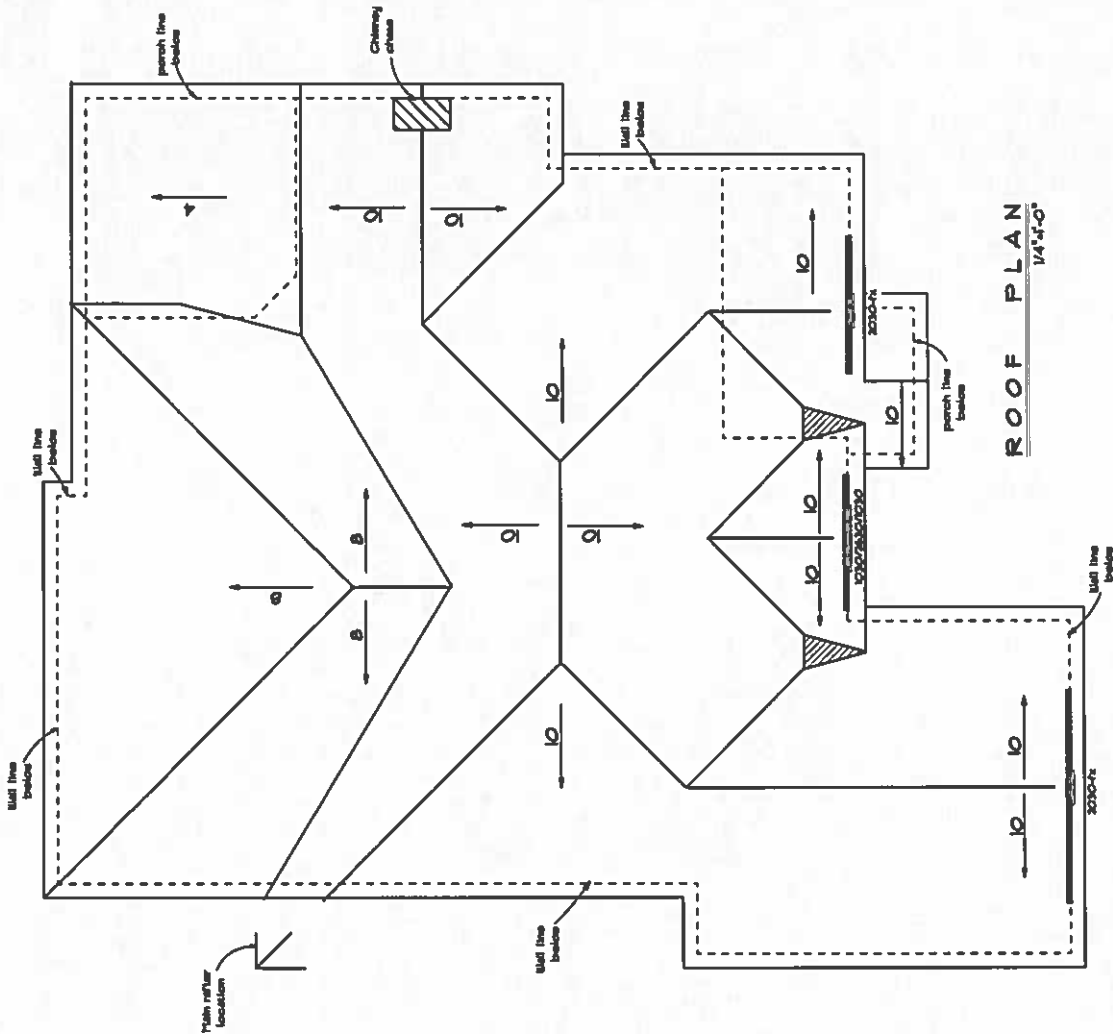
8'-0" CIG. Hgt. +/-



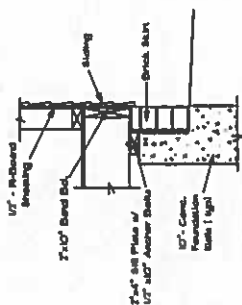
REAR ELEVATION
14'-11"-0"



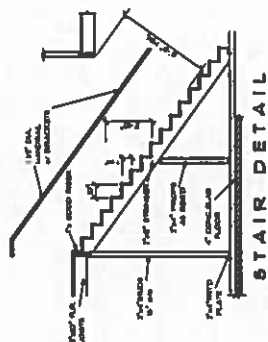
RIGHT ELEVATION
14'-11"-0"



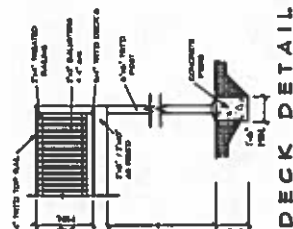
ROOF PLAN
1/4" = 1'-0"



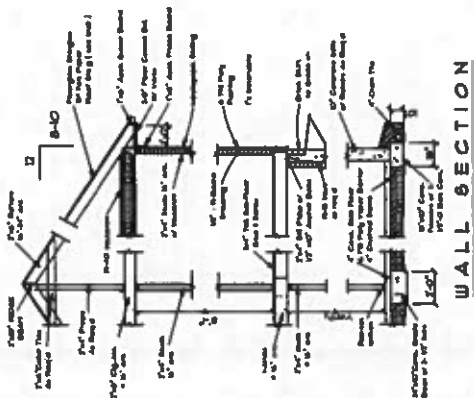
SKIRT SECTION



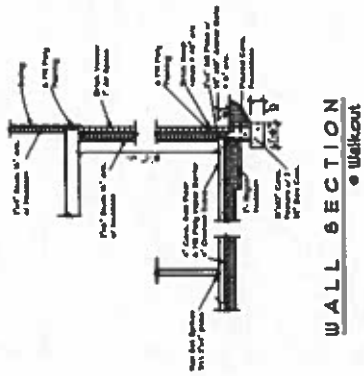
STAIR DETAIL



DECK DETAIL



WALL SECTION



WALL SECTION
- Walkout