



## Physical Distance Solution



### Physical Distance (PD) Tag

- Detects other PD Tags based on Ultrawide Band Technology
- Emits audible alert and vibration when detecting another PD Tag in close proximity
- Rechargeable battery for long-term use
- Safety range setting up to 16 ft.



Tag Helmet Holder



### Physical Distance Light (PDL) Terminal

- Detects PD Tags in the area using Ultrawide Band Technology
- Emits audible alert and flashing LED when detecting a PD Tag in close proximity
- Safety range setting up to 98 ft.
- Multiple audio alert options



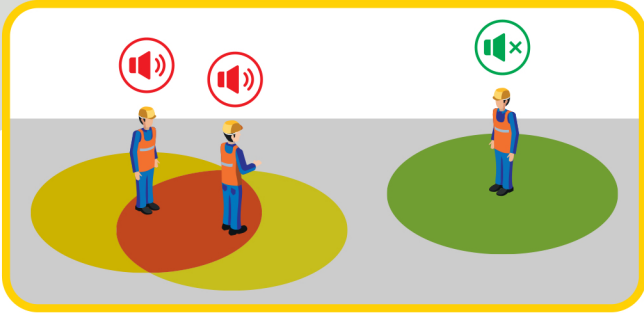
Tag Armband Holder



### External Output Device

- Used with PDL Terminal for additional controller attachments
- Additional controllers can be attached (up to three)
- Output detection signal to controllers





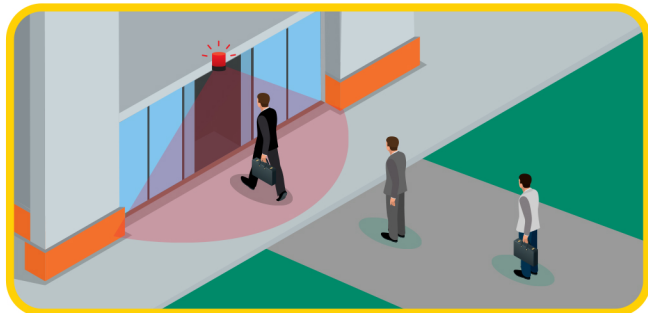
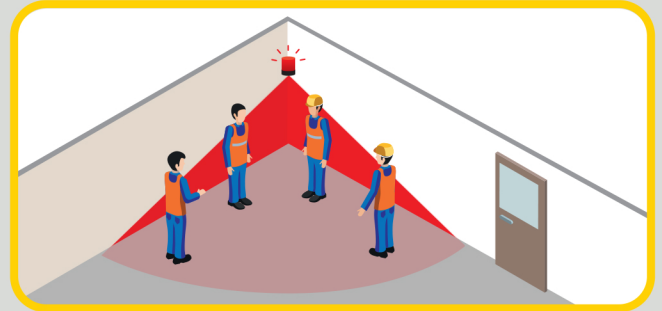
## Physical Distance (PD) Tags

The Physical Distance Tag emits an audible alert and vibrates when in close proximity with another PD Tag. This encourages workers to keep a safe distance from each other. The safety setting range can be set up to 16 ft. The battery lasts an estimated ~8 -10 hours on a full charge.

## Physical Distance Light (PDL) Terminal




The Physical Distance Light (PDL) Terminal detects Physical Distance Tags that enters its range. It emits an audible alert along with a visual LED flash when the number of PD Tags exceeds the programmed acceptable number (can be set up to five Tags).

The safety range can go up to 98 ft.



## Access Control

PDL Terminals connected with the External Output Device will allow access control by detecting PD Tags. Gates will open only when a single PD Tag is located near the entry point. This discourages groups of people from gathering and compromising personal space.

Model	PD Tag	PD Light Terminal	EOD Access Control
Image			
Power	Battery Powered (Li-Polymer 950mA)	110/220VAC	12/24VDC
Interface	--	CAN Bus 2.0	CAN Bus 2.0
Dimension	1.57 x 2.83 x .76 inches	4.83 x 5.53 x 4.38 inches	5.15 x 3.76 x 1.49 inches
Operation Temp.	-4 to 131 degrees F	-22 to 185 degrees F	-22 to 185 degrees F
Operation Hours	~8-10 hours	Continuous	Continuous